

Wildwood Plaza Medical

485 Wildwood Parkway

Chesterfield, MO 63017

PROFESSIONAL OFFICE / MEDICAL AVAILABLE FOR LEASE



- **485-2 Wildwood Pkwy**
- 882 square feet available
- Multiple private offices available

- **485-4 Wildwood Parkway**
- 882 square feet available
- Multiple private offices with kitchenette

- Located just east of the signalized intersection of Clayton Road and Baxter Road
- Great access via Clayton Road and Wildwood Pkwy
- Ample, convenient parking available 6.3/1,000
- Affluent, densely-populated high income area
- **LEASE RATE: \$1,000.00 PER MONTH, GROSS**

HUTKIN DEVELOPMENT COMPANY

10829 Olive Boulevard
Suite 200
St. Louis, MO 63141

Telephone 314.872.9140
FAX 314.872.9001

Visit our website:
www.hutkin.com

CONTACT

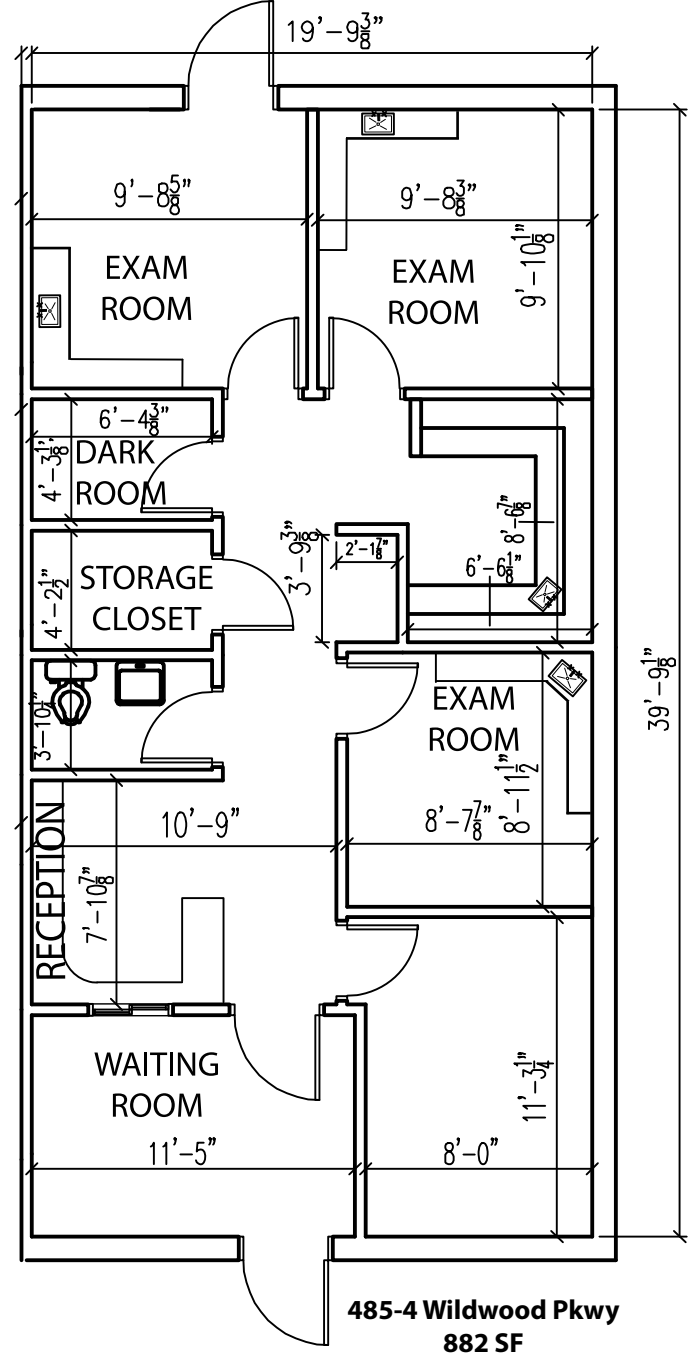
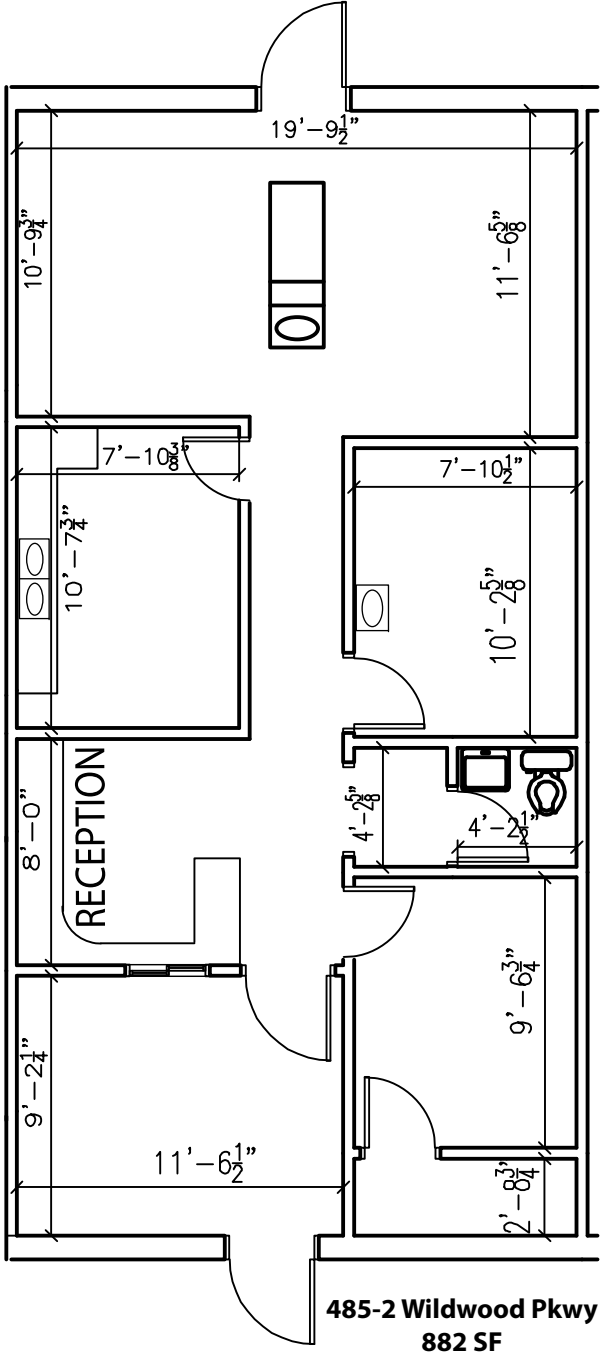
Tony Giarratano
tony@hutkin.com
Cell 314.276.2352

Bo Keefer
bkeefe@hutkin.com
Cell 314.973.1242

Wildwood Plaza Medical

485 Wildwood Parkway
Chesterfield, MO 63017

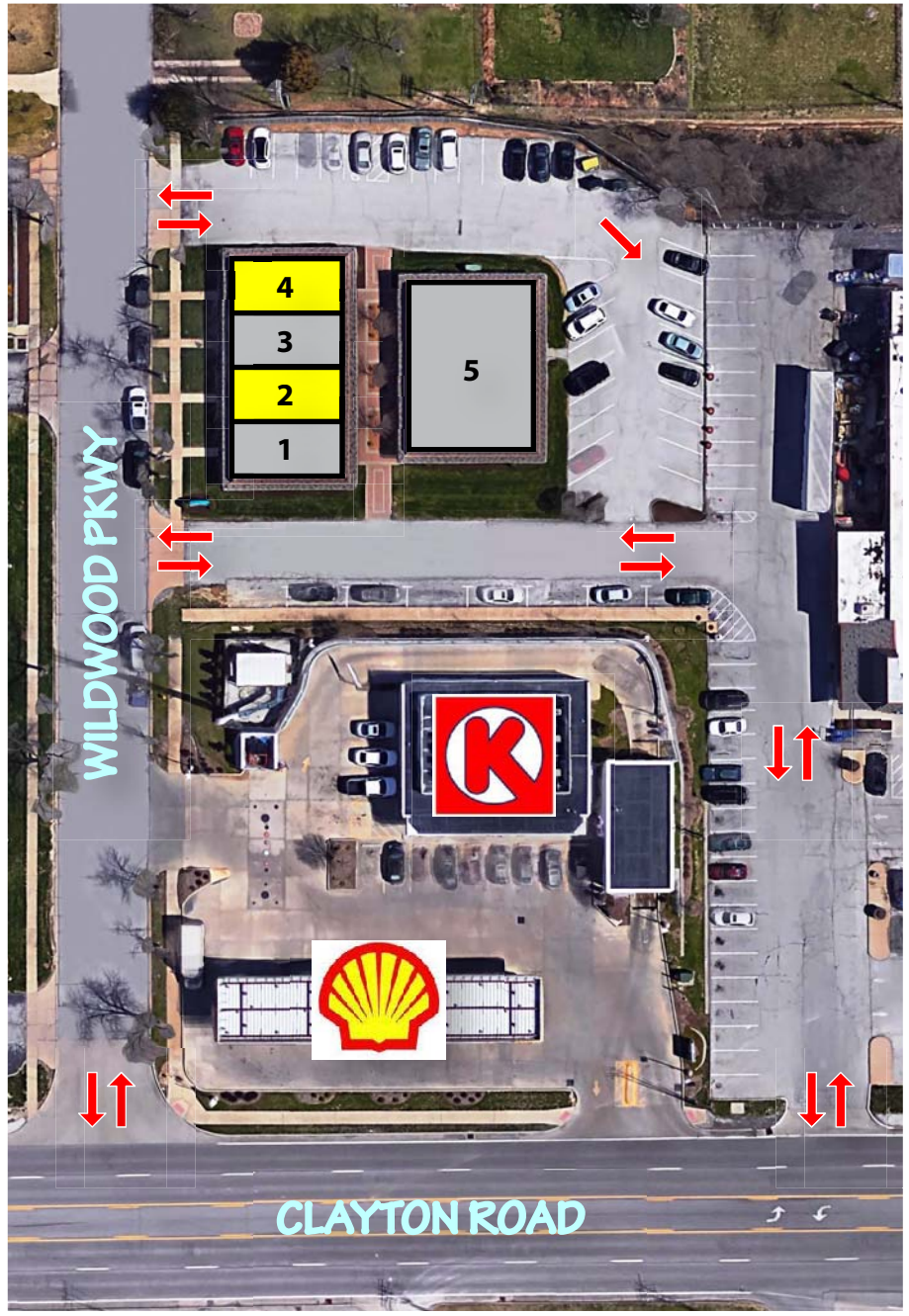
PROFESSIONAL OFFICE / MEDICAL AVAILABLE FOR LEASE



Wildwood Plaza Medical

485 Wildwood Parkway
 Chesterfield, MO 63017

PROFESSIONAL OFFICE / MEDICAL AVAILABLE FOR LEASE



NO.	ADDRESS	STATUS	SIZE (SF)
1	485-1 Wildwood Pkwy	Occupied	882
2	485-2 Wildwood Pkwy	AVAILABLE	882
3	485-3 Wildwood Pkwy	Occupied	882
4	485-4 Wildwood Pkwy	AVAILABLE	882
5	485-5 Wildwood Pkwy	Occupied	3,072