

# FOR LEASE OFFICE



Brokers of the Valley



## 2160 Jefferson Street, Napa, CA 94559 Suite #230

### Property Information

#### Features

- Private Second Floor Offices
- Quiet setting and close to amenities
- Easy access to Highway 29
- Good Parking
- Common Restrooms
- Generous Window Lines
- Windows Open

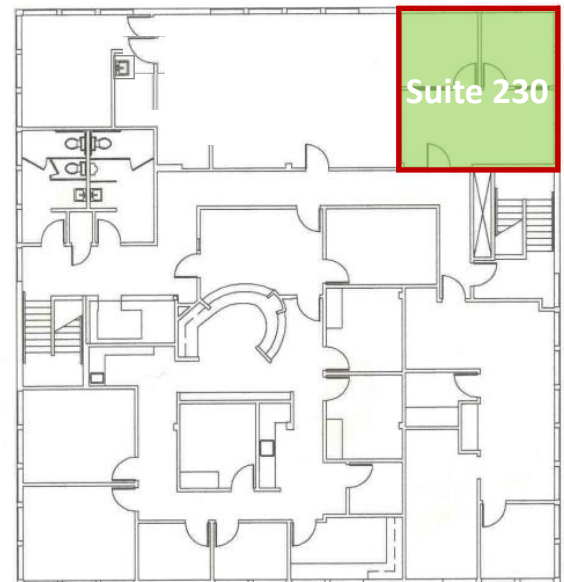
#### Zoning

Community Commercial (CC)

#### Suites

##### Suite #230

- ±424 SF
- \$2.30 SF/Mo. MG



**Michael J. Moffett**  
(707) 479-1976  
mmoffett@cbnapavalley.com  
CaIBRE#00946472

**Cathy D'Angelo Holmes**  
(707) 304-3338  
cholmes@cbnapavalley.com  
CaIBRE#01355085

[NAPACOMMERCIALPROPERTIES.COM](http://NAPACOMMERCIALPROPERTIES.COM)

©2017 Coldwell Banker Real Estate LLC, dba Coldwell Banker Commercial Affiliates. All Rights Reserved. Coldwell Banker Real Estate LLC, dba Coldwell Banker Commercial Affiliates fully supports the principles of the Equal Opportunity Act. Each Office is Independently Owned and Operated. Coldwell Banker Commercial and the Coldwell Banker Commercial Logo are registered service marks owned by Coldwell Banker Real Estate LLC, dba Coldwell Banker Commercial Affiliates.

Coldwell Banker Commercial  
Brokers of the Valley  
1040 Man St. Ste. 101, Napa, CA 94553