

POND 4 PARK

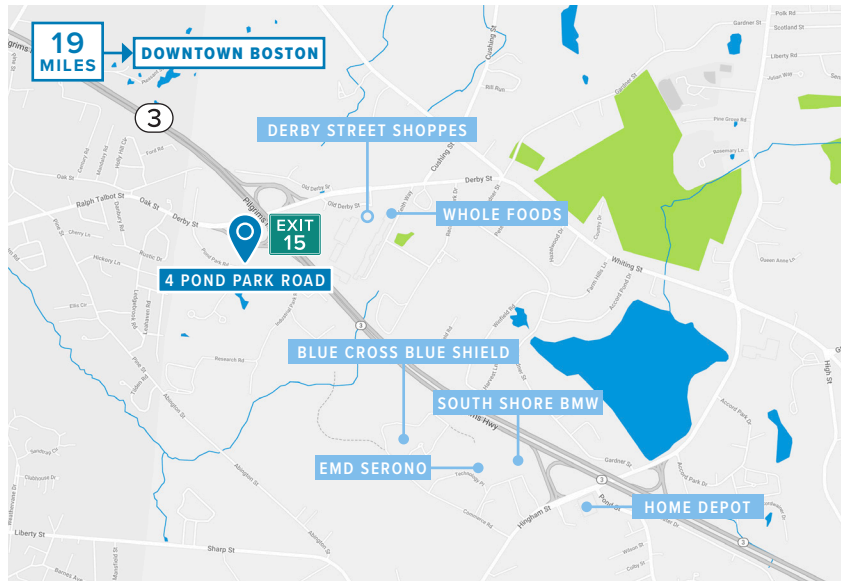
SOUTH SHORE PARK • HINGHAM, MA



EXTERIOR RENDERING



CONCEPTUAL INTERIOR RENDERING



PROPERTY INFORMATION

4 Pond Park - Hingham's Newest Corporate Headquarters Opportunity. Brand New Space - Design to Fit Your Needs!
Conveniently located off Route 3 Exit 15/ Derby Street in South Shore Park with numerous amenities nearby.

FEATURES

- Core and shell renovations currently underway to be completed Spring 2019
- Brand new building systems
- Natural wooded setting
- Parking: 123 spaces – 4.4/1,000 sf
- Abundant window line with bright natural light
- Near Derby Street Shoppes
- Owned and managed by A.W. Perry

FULL BUILDING LEASE OPPORTUNITY

Size: **28,841 sf** | Floor: **1-3**



Commercial
Real Estate
Services

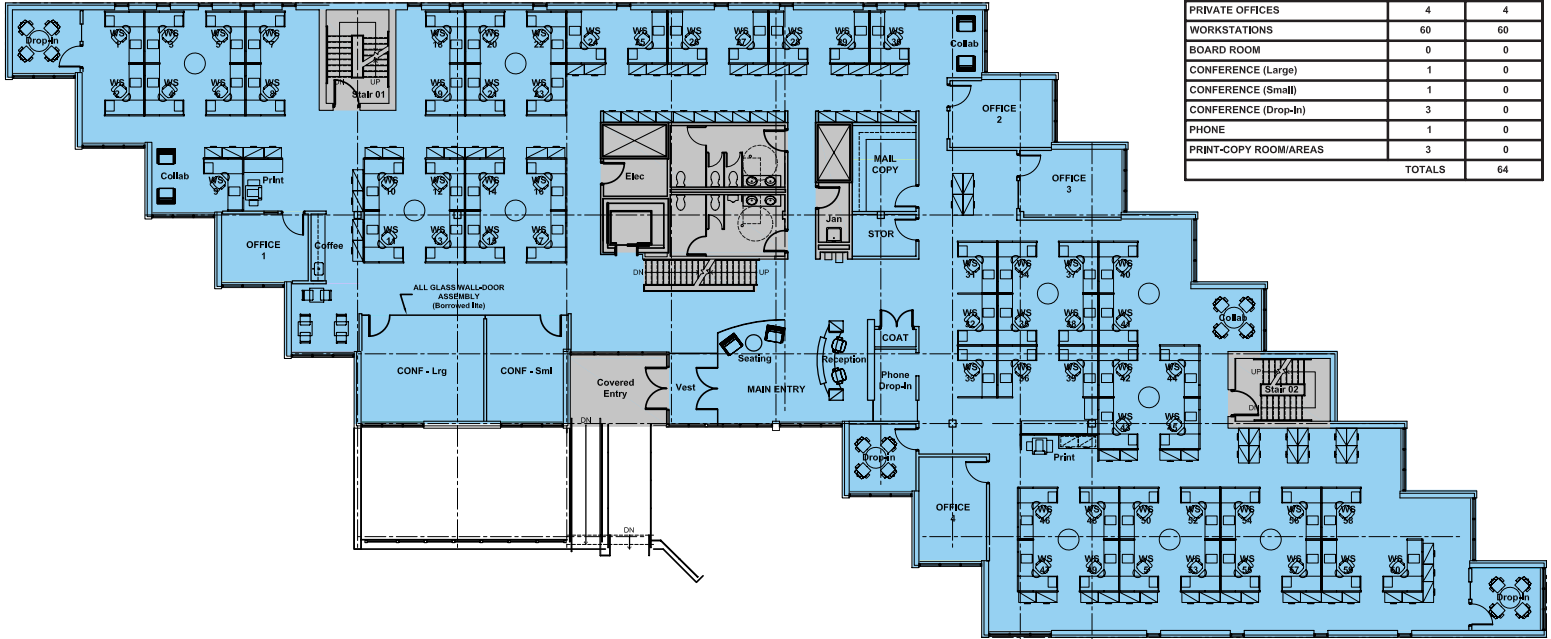
Jon Gifford
Executive Vice President
617.542.8008
jgifford@perrybrokerage.com

Tyler Hilson
Advisor
857.990.3528
thilson@perrybrokerage.com

POND 4 PARK

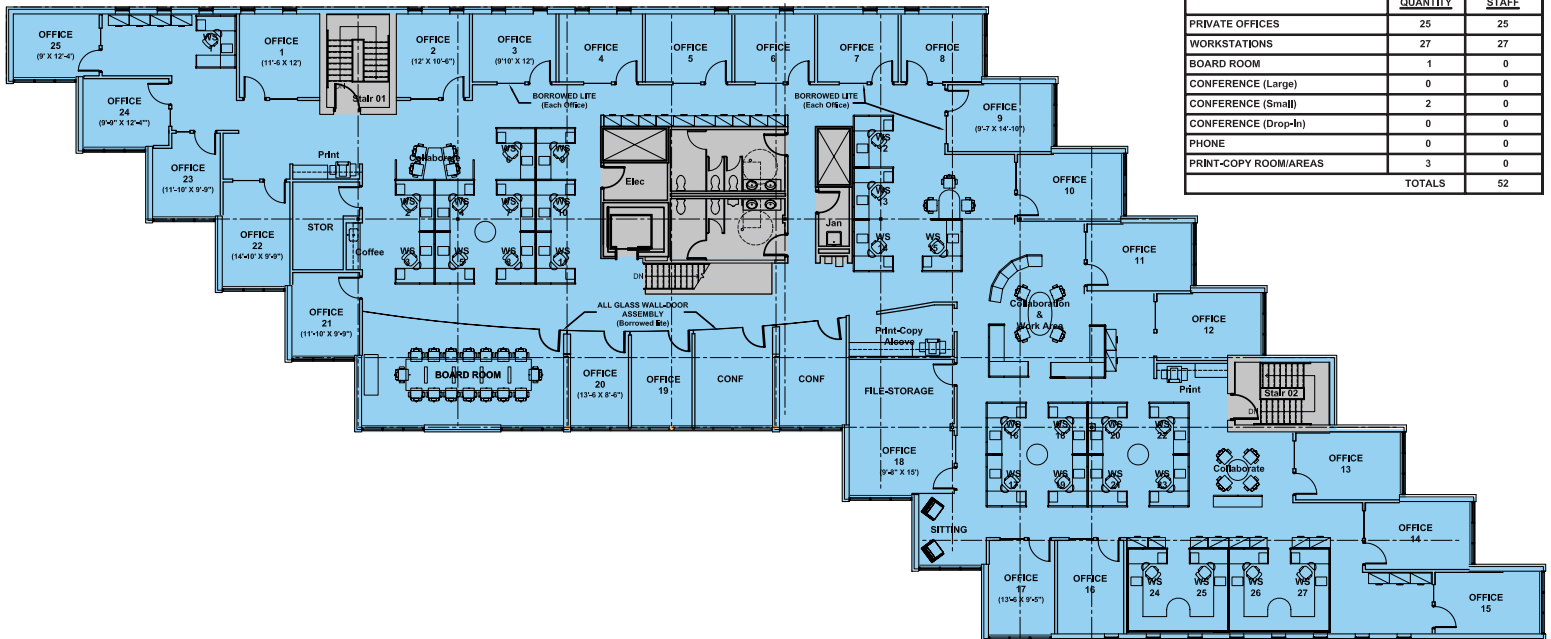
SOUTH SHORE PARK • HINGHAM, MA

ENTRY LEVEL CONCEPT FIT PLAN



PROGRAMMING MATRIX (ENTRY LEVEL)		
	QUANTITY	STAFF
PRIVATE OFFICES	4	4
WORKSTATIONS	60	60
BOARD ROOM	0	0
CONFERENCE (Large)	1	0
CONFERENCE (Small)	1	0
CONFERENCE (Drop-In)	3	0
PHONE	1	0
PRINT-COPY ROOM/AREAS	3	0
TOTALS	64	64

UPPER LEVEL CONCEPT FIT PLAN



PROGRAMMING MATRIX (UPPER LEVEL)		
	QUANTITY	STAFF
PRIVATE OFFICES	25	25
WORKSTATIONS	27	27
BOARD ROOM	1	0
CONFERENCE (Large)	0	0
CONFERENCE (Small)	2	0
CONFERENCE (Drop-In)	0	0
PHONE	0	0
PRINT-COPY ROOM/AREAS	3	0
TOTALS	52	52



Commercial
Real Estate
Services

Jon Gifford
Executive Vice President
617.542.8008
jgifford@perrybrokerage.com

Tyler Hilson
Advisor
857.990.3528
thilson@perrybrokerage.com