

DOMAIN

W4  
d



# DOMAIN W4

5,713 SF

UNIQUE OFFICE OPPORTUNITY IN THE HEART OF ROCK ROSE

11501 ROCK ROSE BLVD



Travis Dunaway  
(512) 682 5570  
tdunaway@endeavor-re.com

Jonathan Tate  
(512) 682 5560  
jtate@endeavor-re.com

# DOMAIN W4

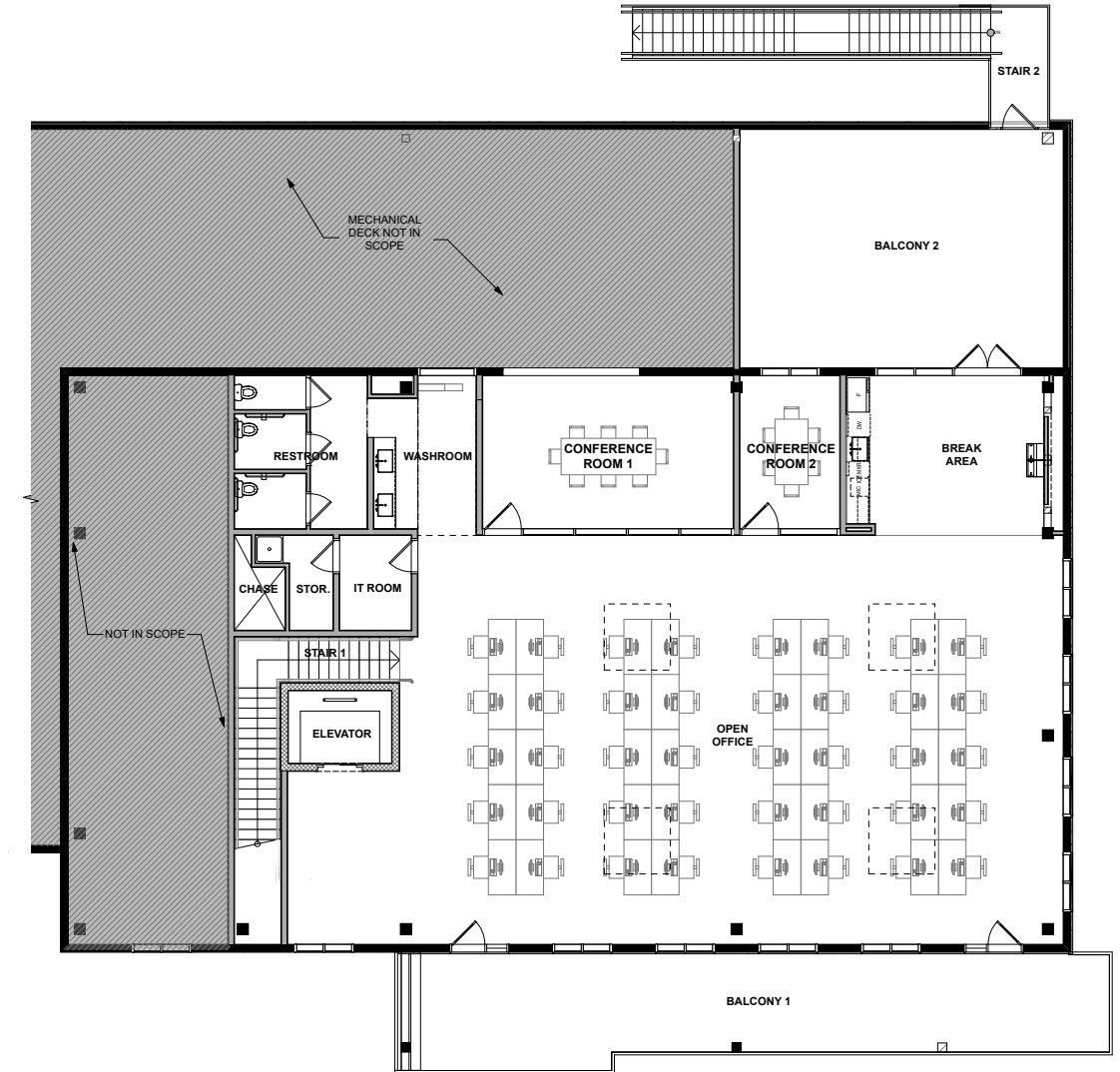
MOVE-IN READY CLASS "A" OFFICE OPPORTUNITY AT THE DOMAIN



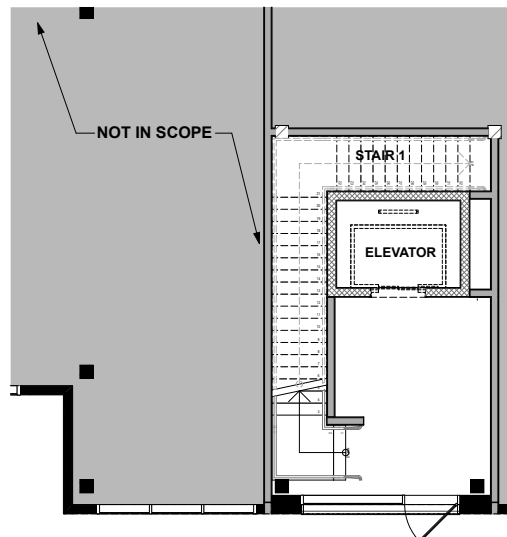
- 5,713 RSF including 1,274 RSF of private outdoor patio space
- Includes 2 large outdoor private balconies
- Fully finished out class "A" office space
- Located on Rock Rose with over 30 bars and restaurants at your finger tips
- Walkable access to The Archer, Aloft, and Westin Hotels as well as Whole Foods, Viva Day Spa, Birds Barbershop, Orange Theory Fitness, CorePower Yoga, and SoulCycle
- Structured parking at a 4.0/1000 ratio
- One block from the Northside central park

## SECOND FLOOR

Suite 200:  
5,713 RSF



## GROUND FLOOR



W4  
d



Domain W4 Breakroom and West Patio



Domain W4 Sink Area



Domain W4 Ground Floor

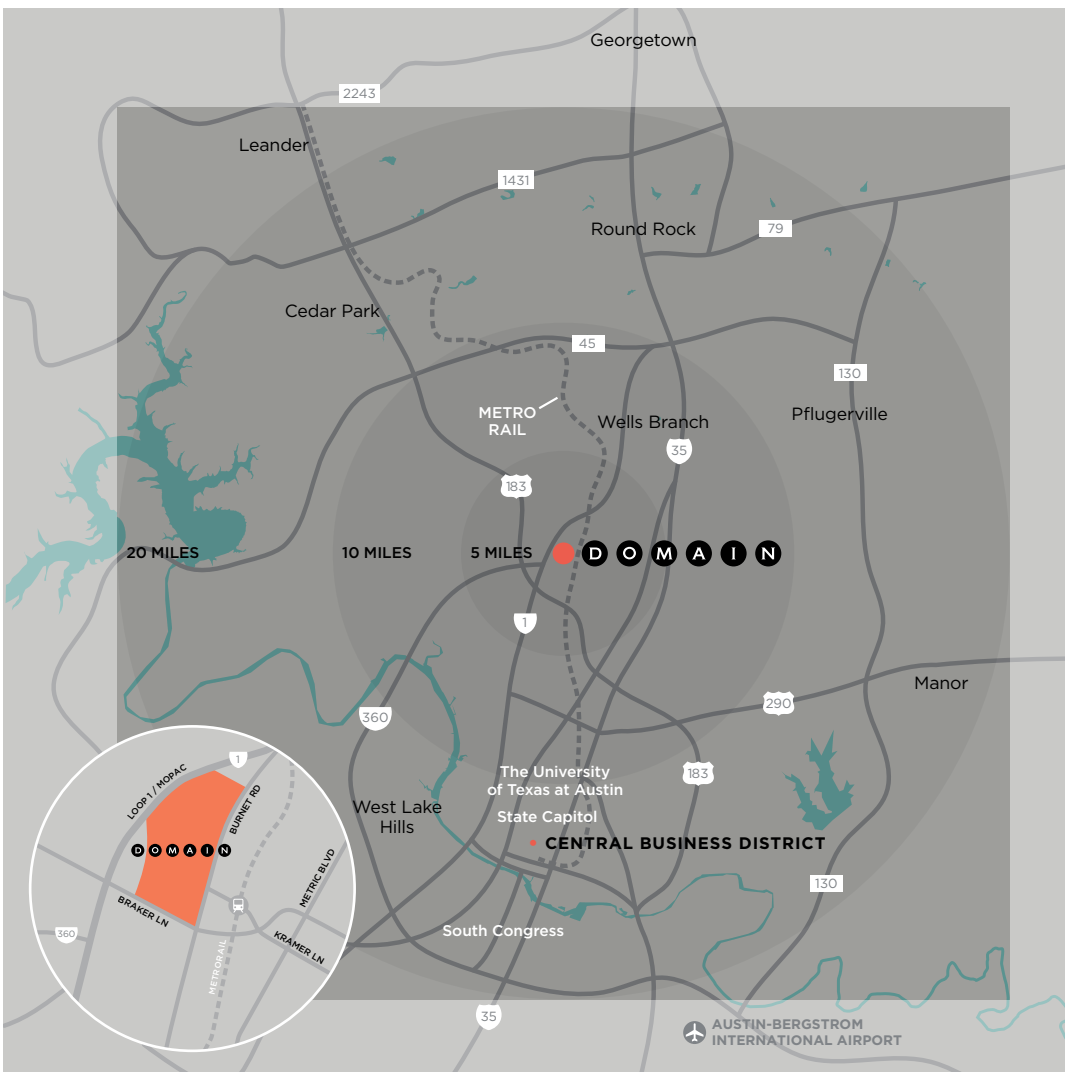


Domain W4 Front View

# AUSTIN HAS IT

AN EDGE, A TONE, A DISTINCT AMBIENCE—THAT SETS IT APART FROM CITIES THAT ARE AS BIG OR BIGGER, BUT NOT SO COMPELLINGLY HIP.

AUSTIN ALSO HAS *THE DOMAIN*, a vibrant mixed use community that sets new standards for living, working, dining, and having fun. It's Austin's hottest place to see and be seen. And, a strategic venue for employers looking for a home from which to recruit talented employees.



- Office Buildings
- Apartments & Retail
- Hotels
- Rock Rose Entertainment District & Restaurants
- Parking

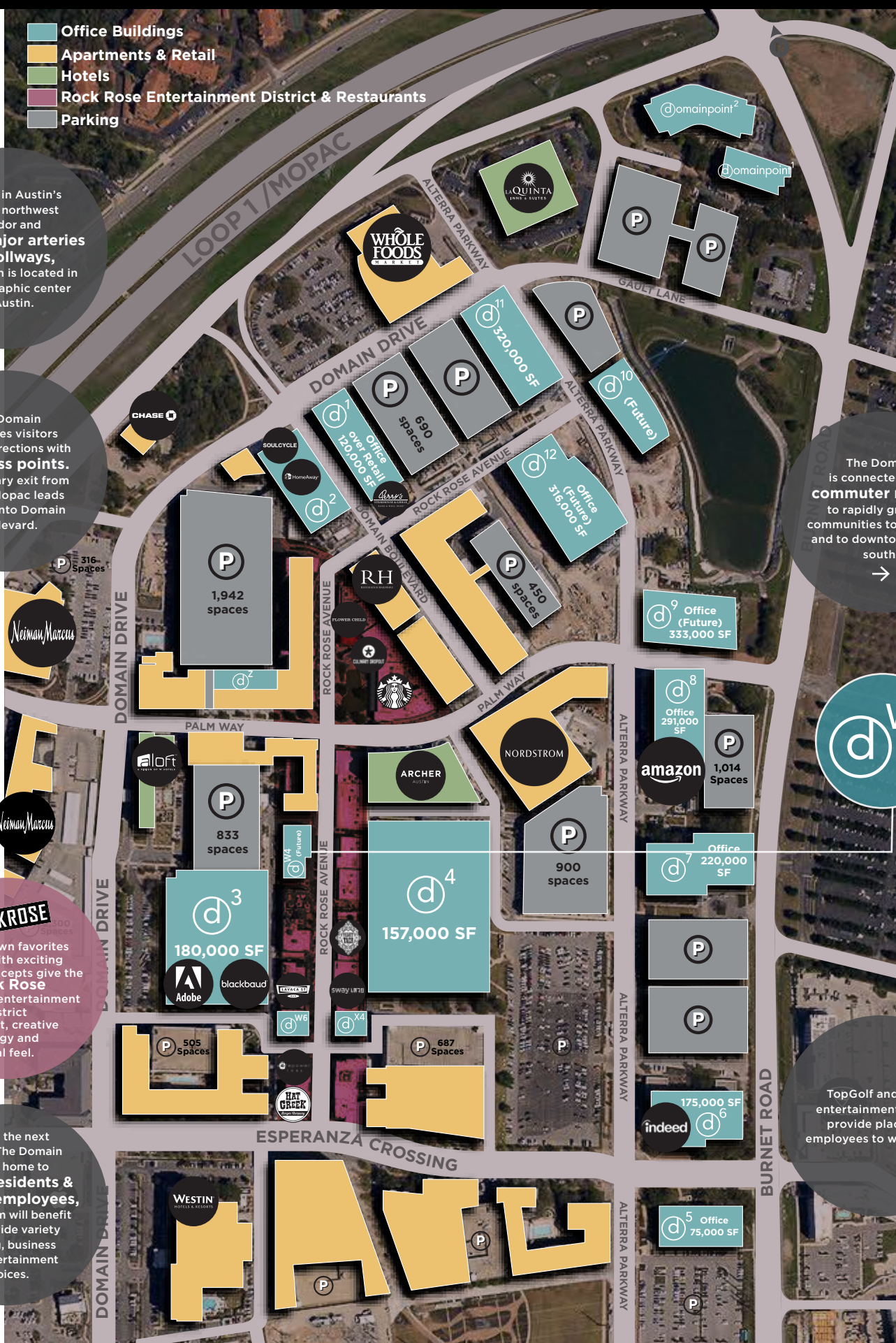
Located in Austin's affluent northwest corridor and fed by major arteries and tollways, The Domain is located in the geographic center of Austin.

The Domain welcomes visitors from all directions with **13 access points**. The primary exit from Loop 1/Mopac leads directly into Domain Boulevard.

The Domain is connected via a **commuter rail line** to rapidly growing communities to the north and to downtown to the south.

**ROCKROSE**  
Homegrown favorites mixed with exciting national concepts give the **Rock Rose** dining and entertainment district a vibrant, creative energy and local feel.

Within the next decade The Domain will be home to **6,000 residents & 20,000 employees**, all of whom will benefit from a wide variety of living, business and entertainment choices.



**dW4**

TopGolf and other entertainment venues provide places for employees to wind down.

Neiman Marcus

Neiman Marcus

CHASE

aloft

Adobe

WESTIN

WHOLE FOODS

SOUFCYCLE

RH

ARCHER

blackbaud

HEAT CRACK

LA QUINTA

Office over retail

STARBUCKS

NORDSTROM

157,000 SF

687 Spaces

Office 320,000 SF

Office (Future) 316,000 SF

Office 450 spaces

Office 291,000 SF

Office 220,000 SF

Office 175,000 SF

Office 75,000 SF

Office 690 spaces

Office 1,014 Spaces

Office 900 spaces

Office 1,014 Spaces

Office 1,014 Spaces

Office 1,014 Spaces

Office 1,014 Spaces

Office 320,000 SF

Office (Future) 316,000 SF

Office 450 spaces

Office 291,000 SF

Office 220,000 SF

Office 175,000 SF

Office 75,000 SF

domainpoint<sup>2</sup>

domainpoint<sup>1</sup>

d<sup>9</sup> Office (Future) 333,000 SF

d<sup>8</sup> Office 291,000 SF

d<sup>7</sup> Office 220,000 SF

d<sup>6</sup> indeed 175,000 SF

d<sup>5</sup> Office 75,000 SF

1,942 spaces

833 spaces

180,000 SF

505 Spaces

WESTIN

WHOLE FOODS

SOUFCYCLE

RH

ARCHER

blackbaud

HEAT CRACK

LA QUINTA

Office over retail

STARBUCKS

NORDSTROM

157,000 SF

687 Spaces

Office 320,000 SF

Office (Future) 316,000 SF

Office 450 spaces

Office 291,000 SF

Office 220,000 SF

Office 175,000 SF

Office 75,000 SF

Office 690 spaces

Office 1,014 Spaces

Office 900 spaces

Office 291,000 SF

Office 220,000 SF

Office 175,000 SF

Office 75,000 SF

Office 320,000 SF

Office (Future) 316,000 SF

Office 450 spaces

Office 291,000 SF

Office 220,000 SF

Office 175,000 SF

Office 75,000 SF

domainpoint<sup>2</sup>

domainpoint<sup>1</sup>

d<sup>9</sup> Office (Future) 333,000 SF

d<sup>8</sup> Office 291,000 SF

d<sup>7</sup> Office 220,000 SF

d<sup>6</sup> indeed 175,000 SF

d<sup>5</sup> Office 75,000 SF

1,942 spaces

833 spaces

180,000 SF

505 Spaces

WESTIN

WHOLE FOODS

SOUFCYCLE

RH

ARCHER

blackbaud

HEAT CRACK

LA QUINTA

Office over retail

STARBUCKS

NORDSTROM

157,000 SF

687 Spaces

Office 320,000 SF

Office (Future) 316,000 SF

Office 450 spaces

Office 291,000 SF

Office 220,000 SF

Office 175,000 SF

Office 75,000 SF

Office 690 spaces

Office 1,014 Spaces

Office 900 spaces

Office 291,000 SF

Office 220,000 SF

Office 175,000 SF

Office 75,000 SF

Office 320,000 SF

Office (Future) 316,000 SF

Office 450 spaces

Office 291,000 SF

Office 220,000 SF

Office 175,000 SF

Office 75,000 SF

domainpoint<sup>2</sup>

domainpoint<sup>1</sup>

d<sup>9</sup> Office (Future) 333,000 SF

d<sup>8</sup> Office 291,000 SF

d<sup>7</sup> Office 220,000 SF

d<sup>6</sup> indeed 175,000 SF

d<sup>5</sup> Office 75,000 SF

1,942 spaces

833 spaces

180,000 SF

505 Spaces

WESTIN

WHOLE FOODS

SOUFCYCLE

RH

ARCHER

blackbaud

HEAT CRACK

LA QUINTA

Office over retail

STARBUCKS

NORDSTROM

157,000 SF

687 Spaces

Office 320,000 SF

Office (Future) 316,000 SF

Office 450 spaces

Office 291,000 SF

Office 220,000 SF

Office 175,000 SF

Office 75,000 SF

Office 690 spaces

Office 1,014 Spaces

Office 900 spaces

Office 291,000 SF

Office 220,000 SF

Office 175,000 SF

Office 75,000 SF

Office 320,000 SF

Office (Future) 316,000 SF

Office 450 spaces

Office 291,000 SF

Office 220,000 SF

Office 175,000 SF

Office 75,000 SF

domainpoint<sup>2</sup>

domainpoint<sup>1</sup>

d<sup>9</sup> Office (Future) 333,000 SF

d<sup>8</sup> Office 291,000 SF

d<sup>7</sup> Office 220,000 SF

d<sup>6</sup> indeed 175,000 SF

d<sup>5</sup> Office 75,000 SF

1,942 spaces

833 spaces

180,000 SF

505 Spaces

WESTIN

WHOLE FOODS

SOUFCYCLE

RH

ARCHER

blackbaud

HEAT CRACK

LA QUINTA

Office over retail

STARBUCKS

NORDSTROM

157,000 SF

687 Spaces

Office 320,000 SF

Office (Future) 316,000 SF

Office 450 spaces

Office 291,000 SF

Office 220,000 SF

Office 175,000 SF

Office 75,000 SF

Office 690 spaces

Office 1,014 Spaces

Office 900 spaces

Office 291,000 SF

Office 220,000 SF

Office 175,000 SF

Office 75,000 SF

Office 320,000 SF

Office (Future) 316,000 SF

Office 450 spaces

Office 291,000 SF

Office 220,000 SF

Office 175,000 SF

Office 75,000 SF

domainpoint<sup>2</sup>

domainpoint<sup>1</sup>

d<sup>9</sup> Office (Future) 333,000 SF

d<sup>8</sup> Office 291,000 SF

d<sup>7</sup> Office 220,000 SF

d<sup>6</sup> indeed 175,000 SF

d<sup>5</sup> Office 75,000 SF

1,942 spaces

833 spaces

180,000 SF

505 Spaces

WESTIN

WHOLE FOODS

SOUFCYCLE

RH

ARCHER

blackbaud

HEAT CRACK

LA QUINTA

Office over retail

STARBUCKS

NORDSTROM

157,000 SF

687 Spaces

Office 320,000 SF

Office (Future) 316,000 SF

Office 450 spaces

Office 291,000 SF

Office 220,000 SF

Office 175,000 SF

Office 75,000 SF

Office 690 spaces

Office 1,014 Spaces

Office 900 spaces

Office 291,000 SF

# ROCK ROSE ENTERTAINMENT DISTRICT

## REVEL IN IT

*ROCK ROSE IS WHERE THE DOMAIN LETS ITS HAIR DOWN.* The district mixes some of Austin’s most buzzed-about homegrown restaurants and shops with new transplants that locals will love, in an energetic, creative environment perfectly suited to socializing and people watching.

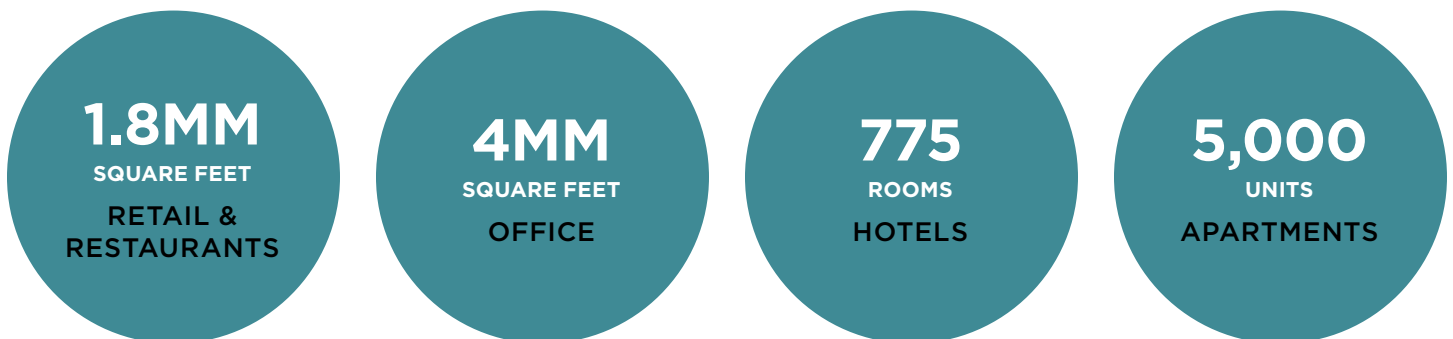




## DOMAIN EXISTING



## DOMAIN AT FULL BUILDOUT





# Information About Brokerage Services

Texas law requires all real estate license holders to give the following information about brokerage services to prospective buyers, tenants, sellers and landlords.



### TYPES OF REAL ESTATE LICENSE HOLDERS:

- **A BROKER** is responsible for all brokerage activities, including acts performed by sales agents sponsored by the broker.
- **A SALES AGENT** must be sponsored by a broker and works with clients on behalf of the broker.

### A BROKER'S MINIMUM DUTIES REQUIRED BY LAW (A client is the person or party that the broker represents):

- Put the interests of the client above all others, including the broker's own interests;
- Inform the client of any material information about the property or transaction received by the broker;
- Answer the client's questions and present any offer to or counter-offer from the client; and
- Treat all parties to a real estate transaction honestly and fairly.

### A LICENSE HOLDER CAN REPRESENT A PARTY IN A REAL ESTATE TRANSACTION:

**AS AGENT FOR OWNER (SELLER/LANDLORD):** The broker becomes the property owner's agent through an agreement with the owner, usually in a written listing to sell or property management agreement. An owner's agent must perform the broker's minimum duties above and must inform the owner of any material information about the property or transaction known by the agent, including information disclosed to the agent or subagent by the buyer or buyer's agent.

**AS AGENT FOR BUYER/TENANT:** The broker becomes the buyer/tenant's agent by agreeing to represent the buyer, usually through a written representation agreement. A buyer's agent must perform the broker's minimum duties above and must inform the buyer of any material information about the property or transaction known by the agent, including information disclosed to the agent by the seller or seller's agent.

**AS AGENT FOR BOTH - INTERMEDIARY:** To act as an intermediary between the parties the broker must first obtain the written agreement of *each party* to the transaction. The written agreement must state who will pay the broker and, in conspicuous bold or underlined print, set forth the broker's obligations as an intermediary. A broker who acts as an intermediary:

- Must treat all parties to the transaction impartially and fairly;
- May, with the parties' written consent, appoint a different license holder associated with the broker to each party (owner and buyer) to communicate with, provide opinions and advice to, and carry out the instructions of each party to the transaction.
- Must not, unless specifically authorized in writing to do so by the party, disclose:
  - that the owner will accept a price less than the written asking price;
  - that the buyer/tenant will pay a price greater than the price submitted in a written offer; and
  - any confidential information or any other information that a party specifically instructs the broker in writing not to disclose, unless required to do so by law.

**AS SUBAGENT:** A license holder acts as a subagent when aiding a buyer in a transaction without an agreement to represent the buyer. A subagent can assist the buyer but does not represent the buyer and must place the interests of the owner first.

### TO AVOID DISPUTES, ALL AGREEMENTS BETWEEN YOU AND A BROKER SHOULD BE IN WRITING AND CLEARLY ESTABLISH:

- The broker's duties and responsibilities to you, and your obligations under the representation agreement.
- Who will pay the broker for services provided to you, when payment will be made and how the payment will be calculated.

**LICENSE HOLDER CONTACT INFORMATION:** This notice is being provided for information purposes. It does not create an obligation for you to use the broker's services. Please acknowledge receipt of this notice below and retain a copy for your records.

Endeavor 2015 Management LLC	9003900	CNorthington@Endeavor-Re.com	512-682-5590
Licensed Broker /Broker Firm Name or Primary Assumed Business Name	License No.	Email	Phone
Robert Charles Northington	374763	CNorthington@Endeavor-Re.com	512-682-5590
Designated Broker of Firm	License No.	Email	Phone
Jonathan Charles Tate	516964	JTate@Endeavor-Re.com	512-682-5560
Licensed Supervisor of Sales Agent/ Associate	License No.	Email	Phone
Travis Gordon Dunaway	465786	TDunaway@Endeavor-Re.com	512-682-5570
Sales Agent/Associate's Name	License No.	Email	Phone

Buyer/Tenant/Seller/Landlord Initials

Date