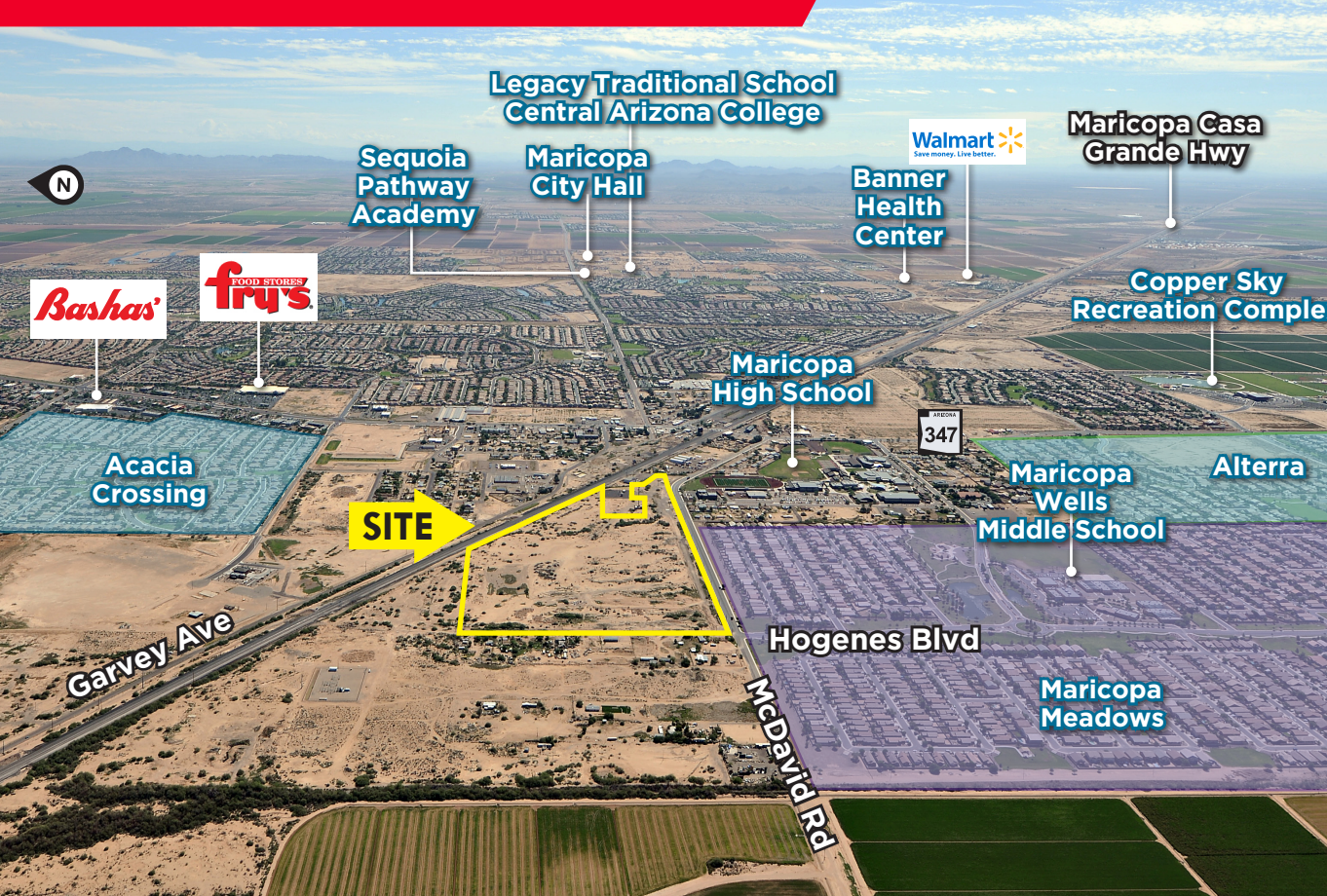


NEC McDavid Road & Hogenes Blvd

±55.67 Acres | Maricopa, Arizona



Bankruptcy Property



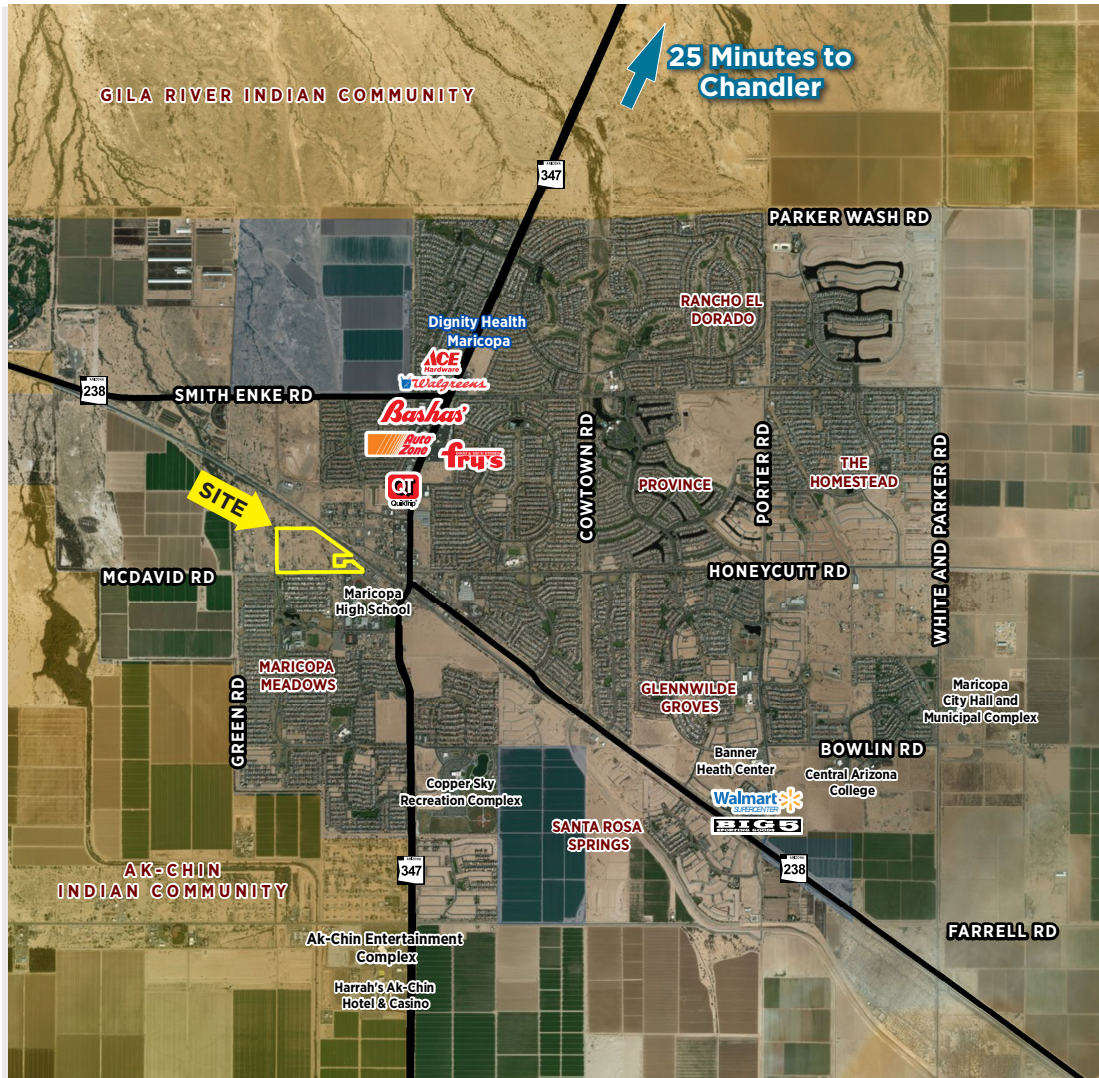
For more information, please contact:

Will French
Vice President
+1 602 224 4496
will.french@cushwake.com

2555 E. Camelback Rd, Suite 400
Phoenix, Arizona 85016
ph: +1 602 954 9000
fx: +1 602 253 0528
cushmanwakefield.com

NEC McDavid Road & Hogenes Blvd

±55.67 Acres | Maricopa, Arizona



LOCATION	NEC McDavid Road & Hogenes Blvd Maricopa, Arizona										
SIZE	±55.67 Acres										
ZONING	CI-2, Industrial										
GENERAL PLAN	Employment/Industrial uses and most retail uses would be allowed										
PARCEL #	510-17-011G										
2017 PROPERTY TAXES	\$23,482.02										
TRAFFIC COUNTS*	North on Hwy 347: 32,806 VPD South on Hwy 347: 20,523 VPD										
DEMOGRAPHICS**		<table border="1"> <thead> <tr> <th></th> <th>3-mile</th> <th>5-mile</th> </tr> </thead> <tbody> <tr> <td>Population</td> <td>44,037</td> <td>53,775</td> </tr> <tr> <td>Avg Household Income</td> <td>\$77,367</td> <td>\$77,278</td> </tr> </tbody> </table>		3-mile	5-mile	Population	44,037	53,775	Avg Household Income	\$77,367	\$77,278
	3-mile	5-mile									
Population	44,037	53,775									
Avg Household Income	\$77,367	\$77,278									
UTILITIES	Global Water is the sewer & water provider and there is capacity & availability for the property										
ADDITIONAL COMMENTS:	<ul style="list-style-type: none"> Property is located in a floodplain Less than 25 mins to Chandler/Price Rd employment corridor Less than 40 mins to Sky Harbor Int'l Airport and Downtown Phoenix 										
PRICE	<p>SUBMIT AN OFFER, OR SHOW UP TO THE SALE APPROVAL HEARING ON THURSDAY, AUGUST 30, 2018 AT 11:00 A.M., MST</p>										

*CoStar ** Source: ESRI BAO 2017

For more information, please contact:

Will French

Vice President

+1 602 224 4496

will.french@cushwake.com

2555 E. Camelback Rd, Suite 400
Phoenix, Arizona 85016
ph: +1 602 954 9000 | fx: +1 602 253 0528
cushmanwakefield.com