

**FOR LEASE**

**1660 Hillsdale Avenue, Suite 160**  
San Jose, CA



**±1,045 SF DENTAL OFFICE**

## **PROPERTY HIGHLIGHTS**

- Fully plumbed dental suite
- Great window line
- Shared vacuum and compressor
- 3 Operatories and lab
- Underground & surface parking at 8/1000
- Waiting room / reception
- 1 Private office
- Monument signage available
- Located in the Willow Glen/Cambrian Park Neighborhoods
- \$2.95/SF Base Year
- Call to tour

### Contact

**MIKI CORREA VIERRA**  
Director  
+1 408 572 4164  
miki.correa@cushwake.com  
Lic. #01718959

**AARON FRITZ, CCIM**  
Senior Director  
+1 408 436 3661  
aaron.fritz@cushwake.com  
Lic. #01216555

[View Site Specific COVID-19 Prevention Plan](#)



©2020 Cushman & Wakefield. All rights reserved. The information contained in this communication is strictly confidential. This information has been obtained from sources believed to be reliable but has not been verified. No warranty or representation, express or implied, is made as to the condition of the property (or properties) referenced herein or as to the accuracy or completeness of the information contained herein, and same is submitted subject to errors, omissions, change of price, rental or other conditions, withdrawal without notice, and to any special listing conditions imposed by the property owner(s). Any projections, opinions or estimates are subject to uncertainty and do not signify current or future property performance.

**FOR LEASE**

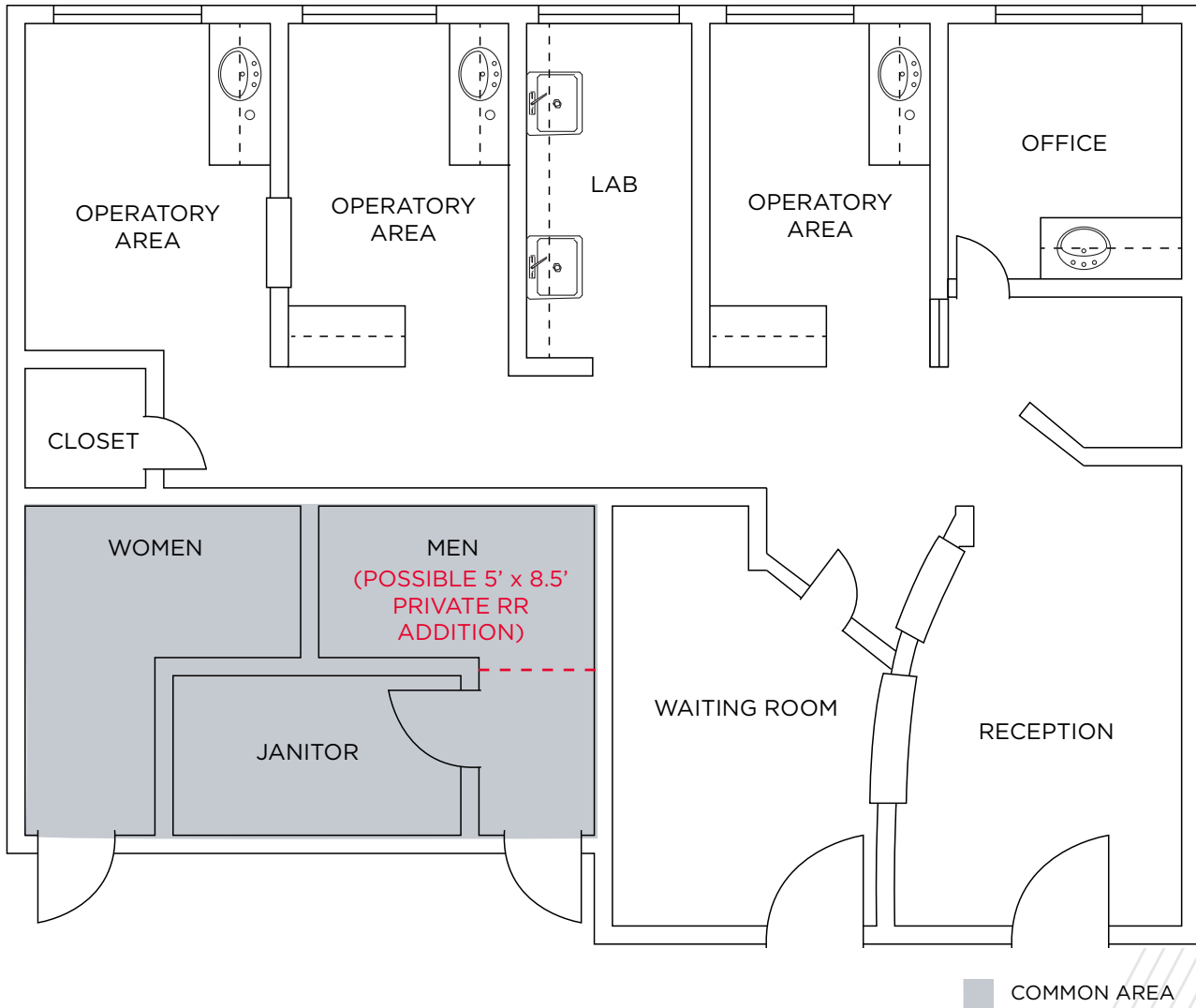
**1660 Hillsdale Avenue, Suite 160**  
San Jose, CA



©2020 Cushman & Wakefield. All rights reserved. The information contained in this communication is strictly confidential. This information has been obtained from sources believed to be reliable but has not been verified. No warranty or representation, express or implied, is made as to the condition of the property (or properties) referenced herein or as to the accuracy or completeness of the information contained herein, and same is submitted subject to errors, omissions, change of price, rental or other conditions, withdrawal without notice, and to any special listing conditions imposed by the property owner(s). Any projections, opinions or estimates are subject to uncertainty and do not signify current or future property performance.

**FOR LEASE**

**1660 Hillsdale Avenue, Suite 160**  
San Jose, CA



**±1,045 SF MEDICAL OFFICE**