



# Park Plaza Commons

555 Alter Street | Broomfield, Colorado 80020

## Property Overview

- Flex/industrial warehouse suites available for lease
- Unit 3-A: 1,166 SF of office space available immediately
- Unit 19-D: 4,082 SF of office & warehouse space with 1 dock door available on April 1, 2019
- 3 phase Power
- Quick, easy access to Highway 36 & Highway 287
- Ideal for office, small warehouse, shop, or storage
- I-2 zoning allows for variety of industrial uses

**Lease Rate: \$7.50-\$12.00/SF (NNN)**

## Property Facts

Available SF:	1,166 SF - 4,082 SF
Total SF:	66,740 SF
Building Type:	Flex
Year Built / Renov.:	1967
Est. Expenses:	\$3.25/SF

For more information:

**Matt Emmons**

303 565 3035

memmons@shamesmakovsky.com

1400 Glenarm Place, Suite 100

Denver, CO 80202

303 534 5005

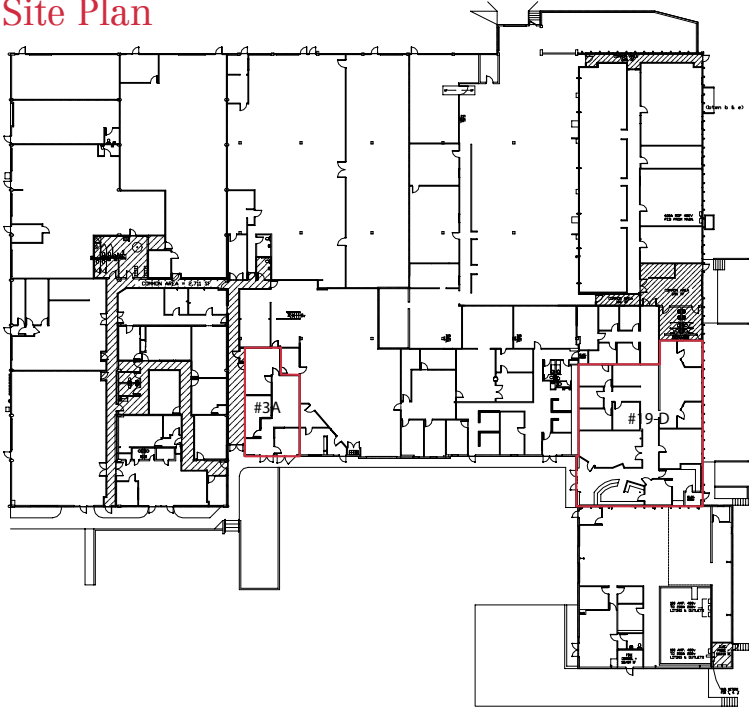
**naishamesmakovsky.com**

NO WARRANTY OR REPRESENTATION, EXPRESS OR IMPLIED, IS MADE AS TO THE ACCURACY OF THE INFORMATION CONTAINED HEREIN, AND THE SAME IS SUBMITTED SUBJECT TO ERRORS, OMISSIONS, CHANGE OF PRICE, RENTAL OR OTHER CONDITIONS, PRIOR SALE, LEASE OR FINANCING, OR WITHDRAWAL WITHOUT NOTICE, AND OF ANY SPECIAL LISTING CONDITIONS IMPOSED BY OUR PRINCIPALS NO WARRANTIES OR REPRESENTATIONS ARE MADE AS TO THE CONDITION OF THE PROPERTY OR ANY HAZARDS CONTAINED THEREIN ARE ANY TO BE IMPLIED.

For Lease  
555 Alter Street #13  
Broomfield, Colorado



### Site Plan



### Availability

#3-A	1,166 RSF	\$12.00/SF NNN
#19-D	4,082 RSF	\$7.50/SF NNN

For more information:

**Matt Emmons**

303 565 3035

memmons@shamesmakovsky.com

**NAI**Shames Makovsky

1400 Glenarm Place, Suite 100

Denver, CO 80202

303 534 5005

[naishamesmakovsky.com](http://naishamesmakovsky.com)