



CREATIVE Space for Lease:  
**165 PAGE ST.**  
*Hayes Valley Sub-Market*

**Suite:**

Full Building

**Size:**

5,500 RSF

**Features:**

- ★ Creative Space with high ceilings and abundant natural light
- ★ Open Plan with 2 Conference Rooms and
- ★ 3 Call Rooms
- ★ Open Kitchen
- ★ Great Location Near Numerous Amenities and Public Transit

Exclusively Presented By:

Mark D. Walker  
(415) 590-7872

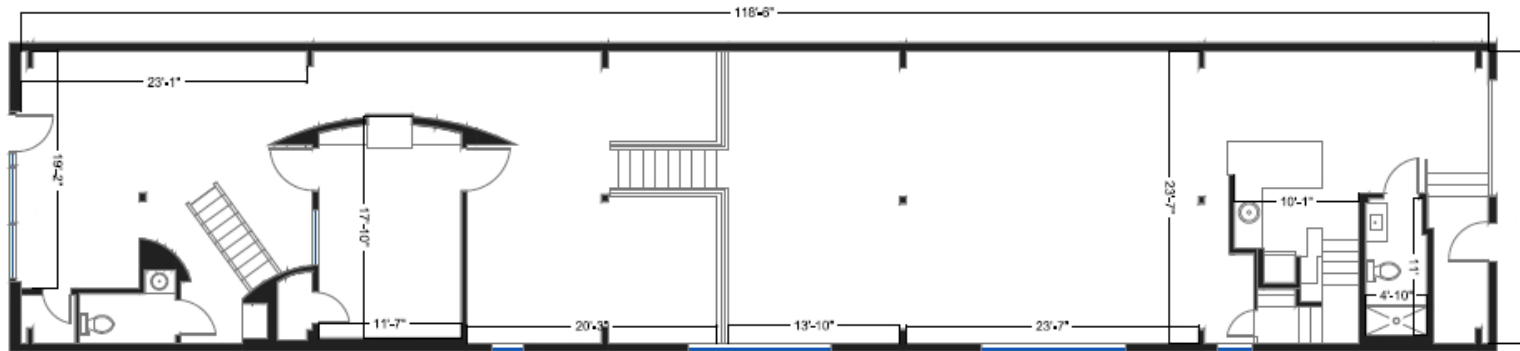
[mwalker@coltoncommercialsf.com](mailto:mwalker@coltoncommercialsf.com)  
License #: 00878051

Daniel H. Starr  
(415) 590-7873

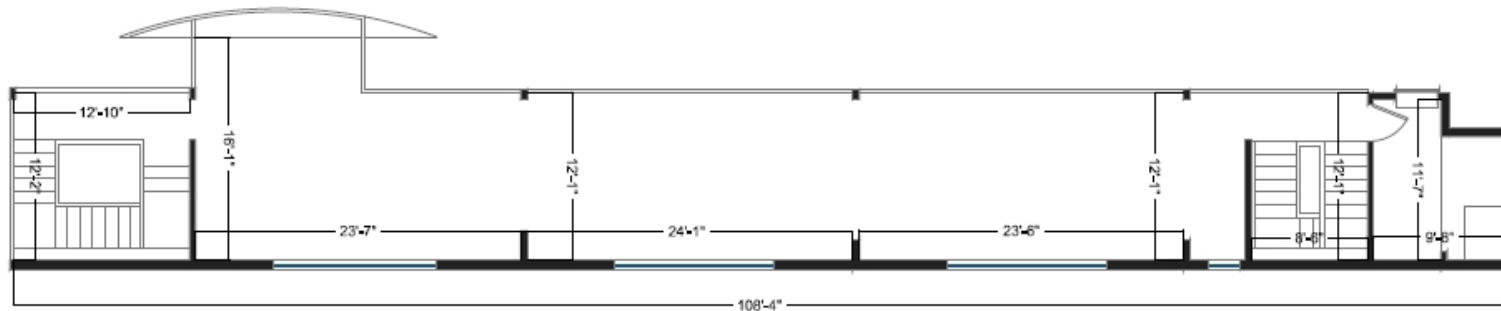
[dstarr@coltoncommercialsf.com](mailto:dstarr@coltoncommercialsf.com)  
License #: 02017899



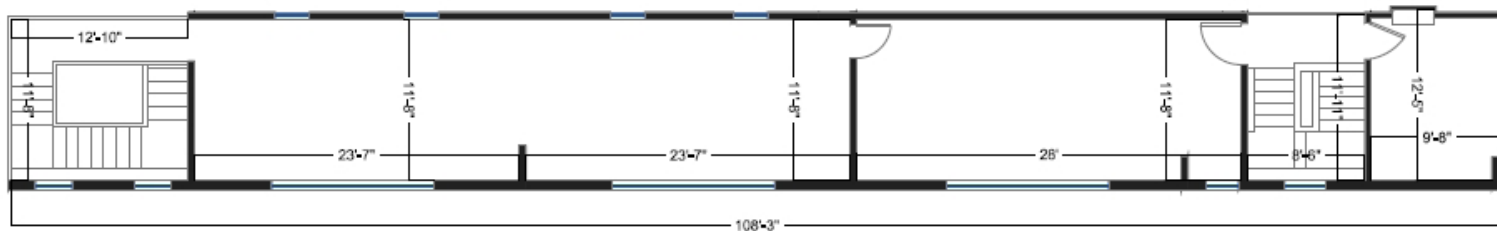
## FLOOR PLANS



**FIRST  
FLOOR**



**SECOND  
FLOOR**



**THIRD  
FLOOR**

Measurements per Owner. No warranties, nor representations are made herein. Tenant is advised to independently confirm layout and measurements.



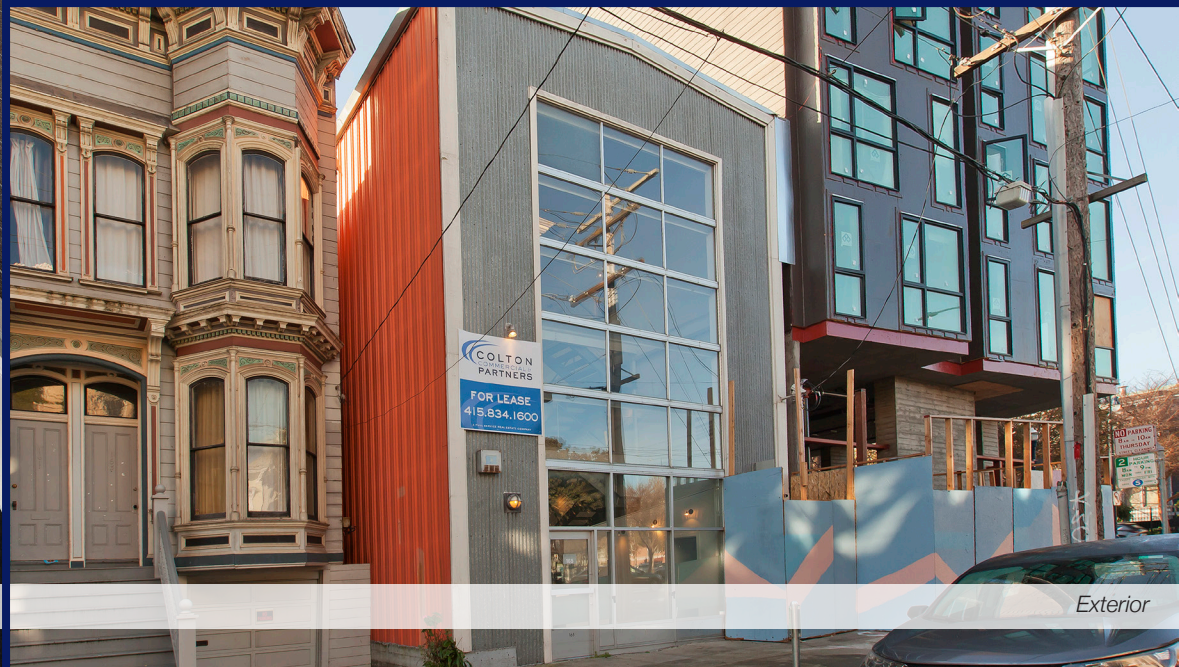
CREATIVE Space for Lease:  
**165 PAGE ST.**  
*Hayes Valley Sub-Market*



*Open Area and Stairwell*



*Ground Floor*



*Exterior*