

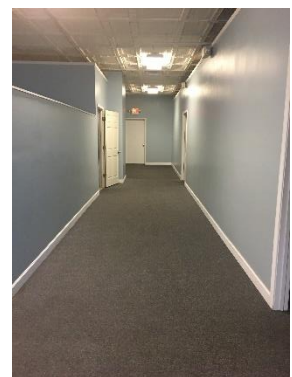
COMMERICAL SPACE FOR IMMEDIATE LEASING



\$10-12 a square foot is a steal!!

This 1,728 sq feet space is in a great location at the corner of Hull Street and 15th Street in the up and coming Manchester/Blackwell area of Richmond. This space has great established neighbors – Nationwide, River City Kung Fu, First Baptist Church of South Richmond, and Venus at Manchester.

It has a large lobby, 3 individual offices, a small kitchen area, and 2 bathrooms.



Need more storage space?? There is an additional large space available for possible lease.

Please call Sandra at 804-230-7822 for more details or to view this awesome space.

We look forward to you joining our neighborhood.