

14998 OLD US-27
MARSHALL, MICHIGAN

LAND FOR SALE
11.53 Acres Available



**SIGNATURE
ASSOCIATES**
KNOW SIGNATURE | KNOW RESULTS



PROPERTY FEATURES

- 11.53 acres available
- Zoned commercial
- Located off exit 110 (I-94) and Old US-27
- Many possible mixed-use development opportunities including: retail, office, dealership, medical, multi-family, hospitality, storage and more
- Excellent visibility off Interstate 94
- Asking price: \$1,599,000 (\$138,681.70/acre)



For more information, please contact:

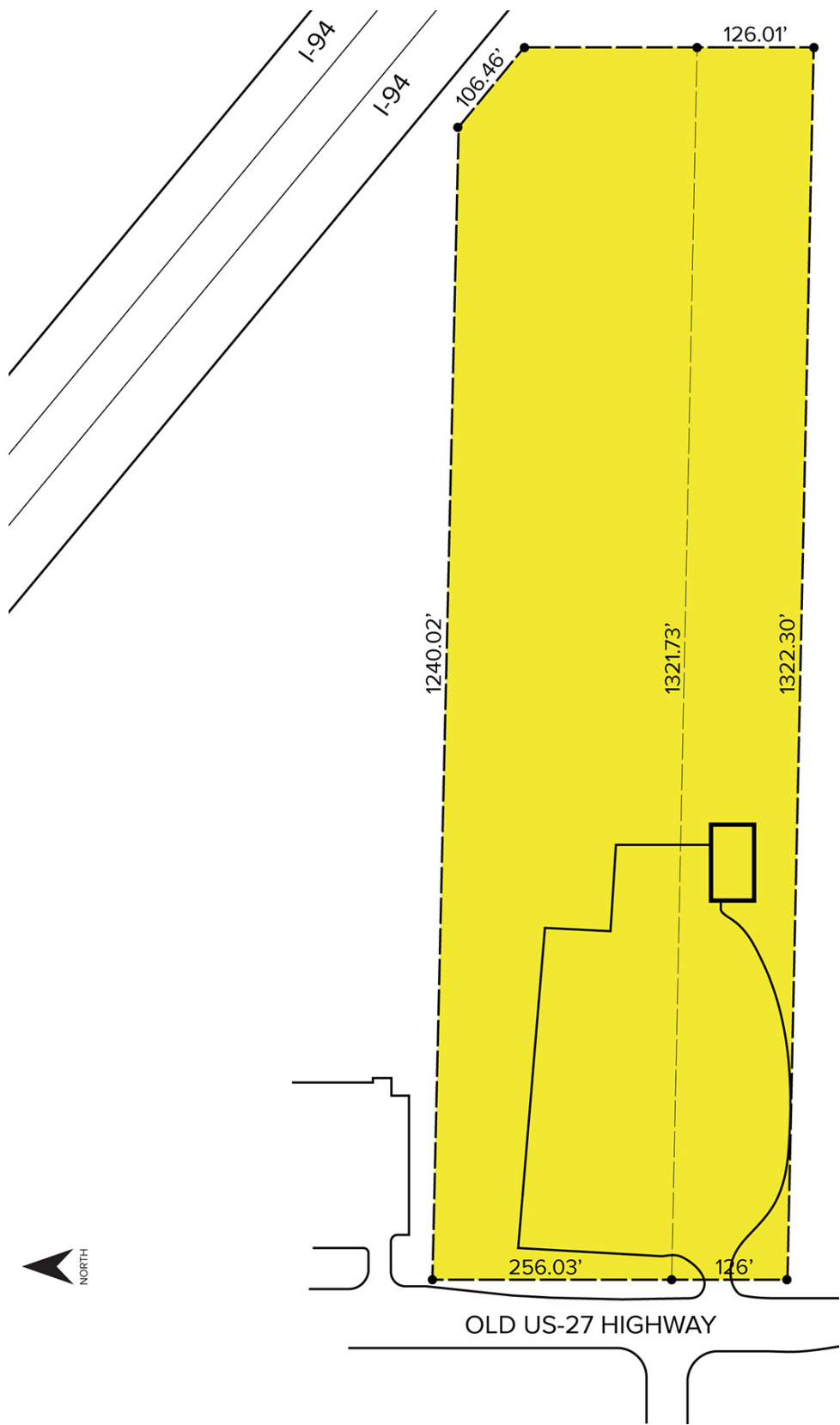
MARVIN PETROUS
(248) 359 0647
mpetrous@signatureassociates.com

SIGNATURE ASSOCIATES
One Towne Square, Suite 1200
Southfield, MI 48076
www.signatureassociates.com

14998 Old US-27 – Marshall, Michigan
Land For Sale

11.53
Acres
AVAILABLE

Site Plan



For more information, please contact:
MARVIN PETROUS
(248) 359 0647
mpetrous@signatureassociates.com

SIGNATURE ASSOCIATES
One Towne Square, Suite 1200
Southfield, MI 48076
www.signatureassociates.com

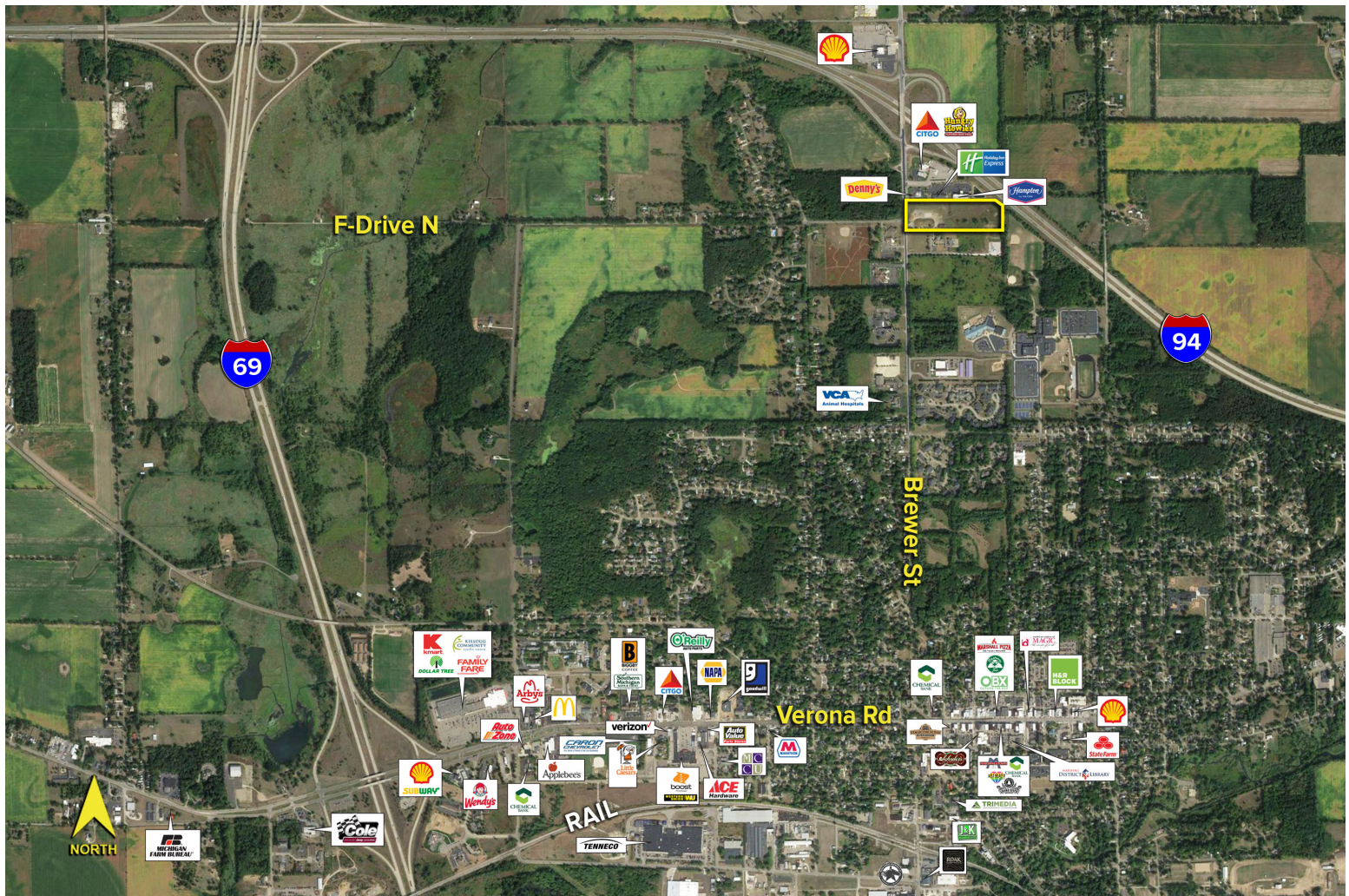
Information is subject to verification and no liability for errors or omissions is assumed. Price is subject to change and listing withdrawal.

14998 Old US-27 – Marshall, Michigan

Land For Sale

11.53
Acres
AVAILABLE

Aerial



For more information, please contact:

MARVIN PETROUS
(248) 359 0647
mpetrous@signatureassociates.com

SIGNATURE ASSOCIATES
One Towne Square, Suite 1200
Southfield, MI 48076
www.signatureassociates.com

Information is subject to verification and no liability for errors or omissions is assumed. Price is subject to change and listing withdrawal.