



## Leasing Terms: Call For Information

### Property Highlights

- **4,728 RSF - Lower Level Space Available**
- Amazing location in the heart of the Market District just west of Downtown
- Abundant walkable amenities (see amenities map)
- Close proximity to Lady Bird Hike & Bike Trail and Zilker Park
- Walk to work – 2282 apartment units within 5 block radius
- Free Surface parking - 2.75:1,000
- Exterior signage available | excellent corporate visibility & branding
- Zoning: LI-CO-NP

#### Mark Greiner

Executive Director

+1 512 474 2400

[Mark.greiner@cushwake.com](mailto:Mark.greiner@cushwake.com)

#### Melissa Totten

Director

+1 512 474 2400

[Melissa.totten@cushwake.com](mailto:Melissa.totten@cushwake.com)

200 W Cesar Chavez, Suite 250  
Austin, TX 78701

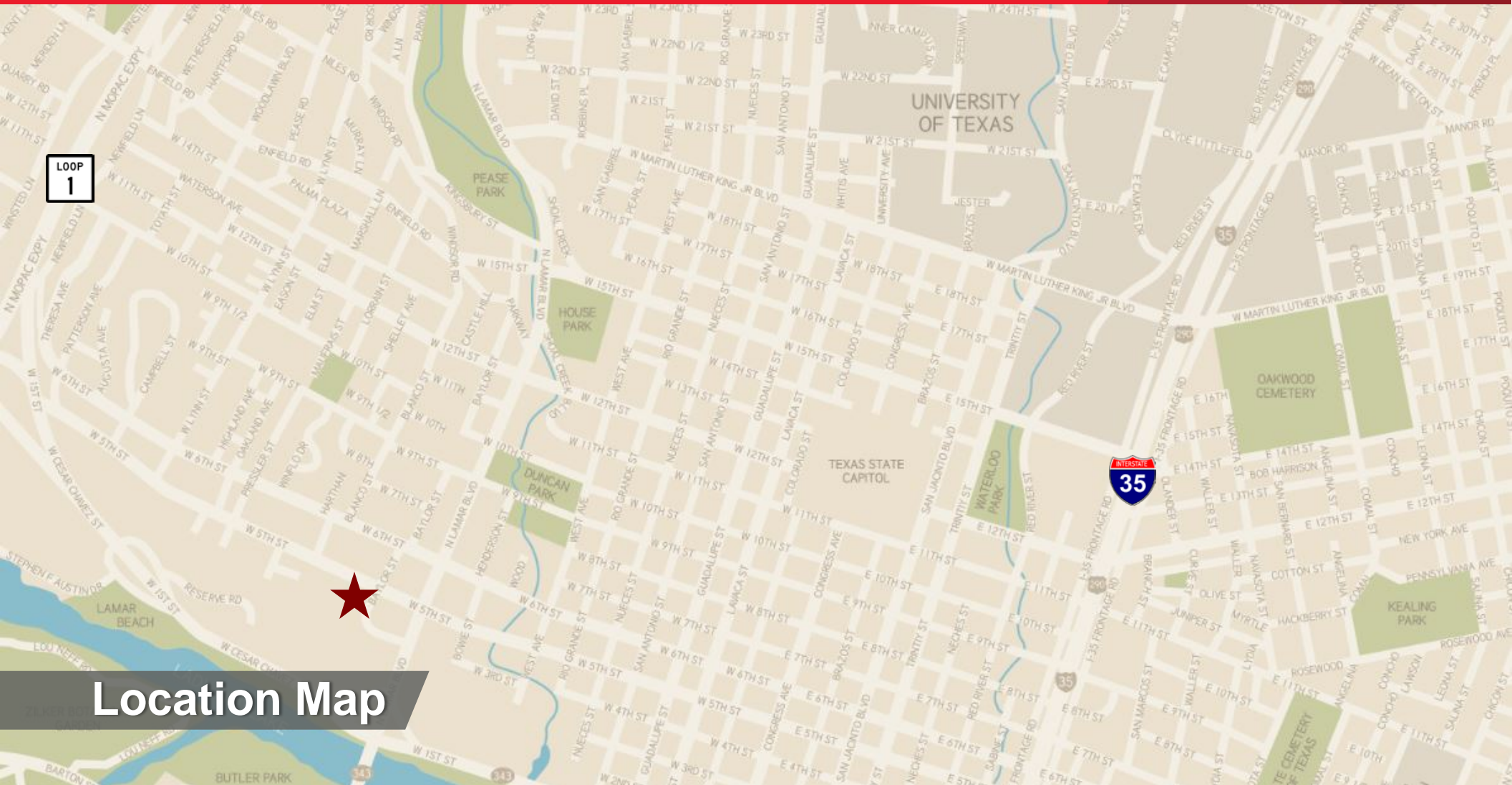
Main +1 (512) 474 2400

Fax +1 (512) 477 3037

**cushmanwakefield.com**

# 410 Baylor | Unique Leasing Opportunity

410 Baylor Street, Austin, TX. 78703



## Location Map

**Mark Greiner**  
Executive Director  
+1 512 474 2400  
[Mark.greiner@cushwake.com](mailto:Mark.greiner@cushwake.com)

**Melissa Totten**  
Director  
+1 512 474 2400  
[Melissa.totten@cushwake.com](mailto:Melissa.totten@cushwake.com)

200 W Cesar Chavez, Suite 250  
Austin, TX 78701  
Main +1 (512) 474 2400  
Fax +1 (512) 477 3037  
[cushmanwakefield.com](http://cushmanwakefield.com)



# 410 Baylor | Unique Leasing Opportunity

410 Baylor Street, Austin, TX. 78703



## Amenities Map

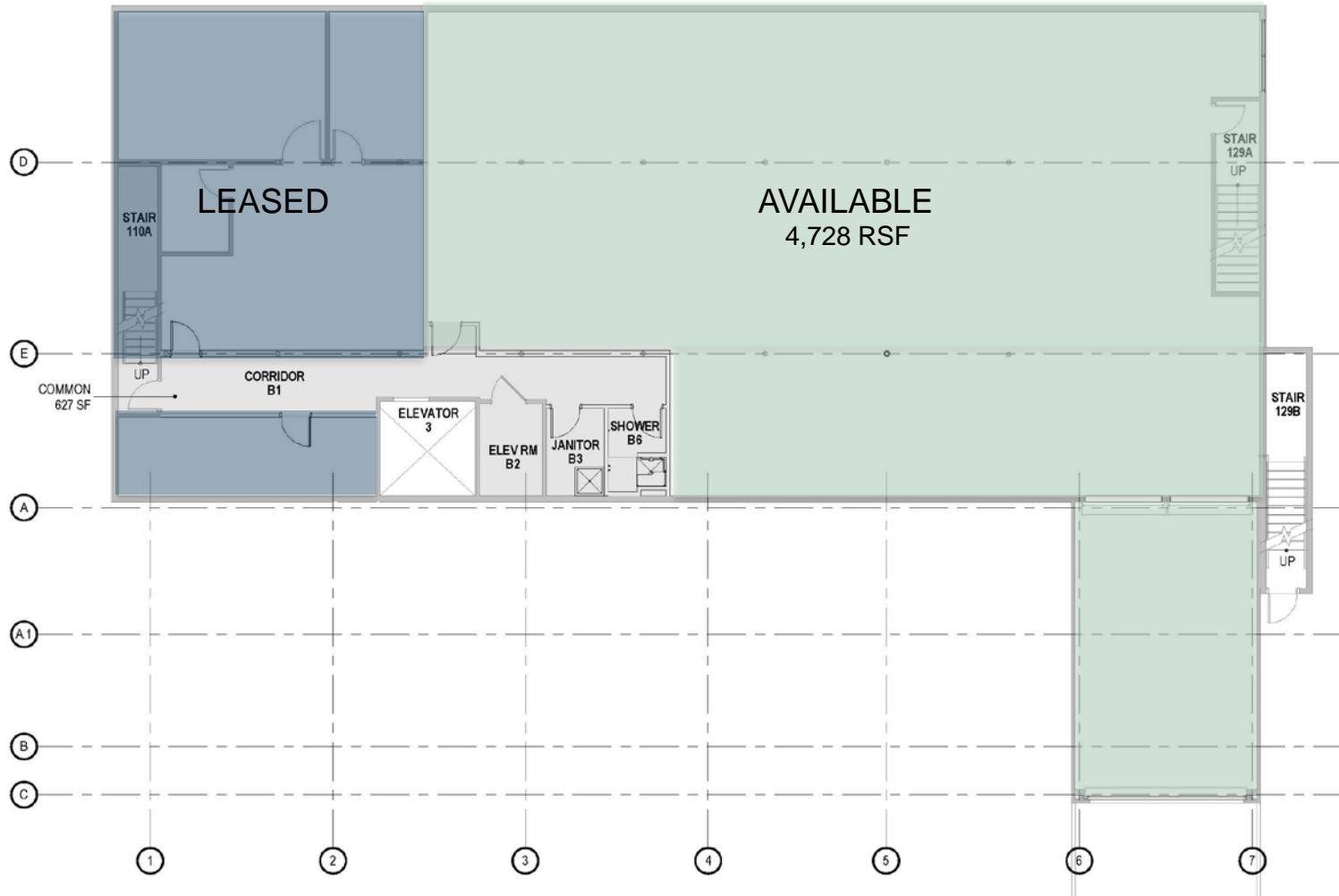
**Mark Greiner**  
Executive Director  
+1 512 474 2400  
[Mark.greiner@cushwake.com](mailto:Mark.greiner@cushwake.com)

**Melissa Totten**  
Director  
+1 512 474 2400  
[Melissa.totten@cushwake.com](mailto:Melissa.totten@cushwake.com)

200 W Cesar Chavez, Suite 250  
Austin, TX 78701  
Main +1 (512) 474 2400  
Fax +1 (512) 477 3037  
[cushmanwakefield.com](http://cushmanwakefield.com)



## Lower Level

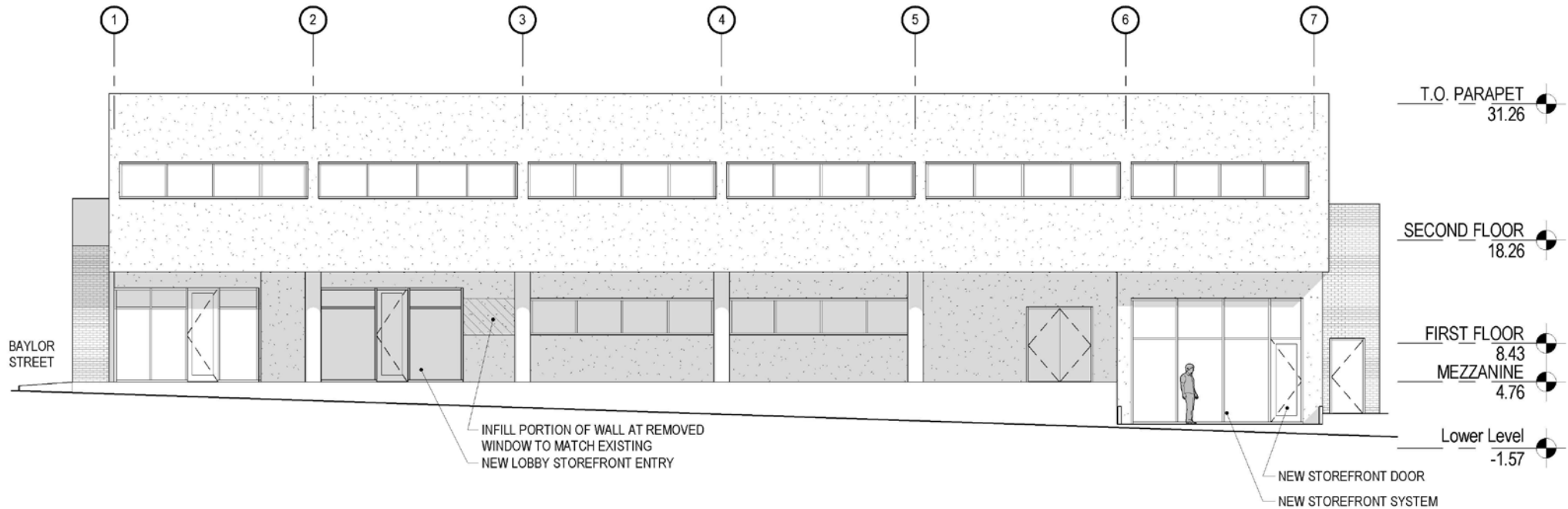


**Mark Greiner**  
Executive Director  
+1 512 474 2400  
[Mark.greiner@cushwake.com](mailto:Mark.greiner@cushwake.com)

**Melissa Totten**  
Director  
+1 512 474 2400  
[Melissa.totten@cushwake.com](mailto:Melissa.totten@cushwake.com)

200 W Cesar Chavez, Suite 250  
Austin, TX 78701  
Main +1 (512) 474 2400  
Fax +1 (512) 477 3037  
[cushmanwakefield.com](http://cushmanwakefield.com)

## North Elevation



**Mark Greiner**  
Executive Director  
+1 512 474 2400  
[Mark.greiner@cushwake.com](mailto:Mark.greiner@cushwake.com)

**Melissa Totten**  
Director  
+1 512 474 2400  
[Melissa.totten@cushwake.com](mailto:Melissa.totten@cushwake.com)

200 W Cesar Chavez, Suite 250  
Austin, TX 78701  
Main +1 (512) 474 2400  
Fax +1 (512) 477 3037  
[cushmanwakefield.com](http://cushmanwakefield.com)