

34920 Ridge Road

2,530± SF Class A Office Space For Lease

Willoughby, Ohio 44094 (Lake County)

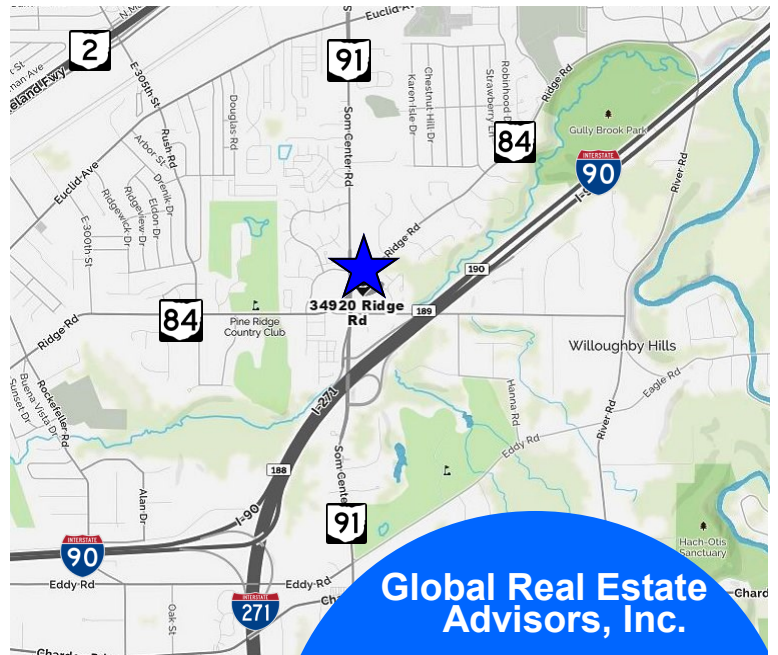


34920 Ridge Road, Willoughby, OH 44094

Property Features:

- 2,530± SF First Floor Office Suite
- Private Offices, Open Floor Space and Conference Rooms
- High Quality Finishes
- Beautifully Landscaped
- Fresh Paint & Carpet (Tenant Selection Possible)
- 120± Parking Spaces
- Tenant Allowances Negotiable
- Landlord will Build Out to Suit

For Lease
Starting at \$14.00 psf NNN



**Global Real Estate
Advisors, Inc.**

Nancy Stark Zangerle
440-255-5552 x 229
216-316-0913 Cell

Nancy@GlobalCommercialRE.com

Neil Sawicki, SIOR, Broker
440-255-5552 x 221

Neil@GlobalCommercialRE.com



www.GlobalCommercialRE.com

8585 East Ave., Mentor, Ohio 44060

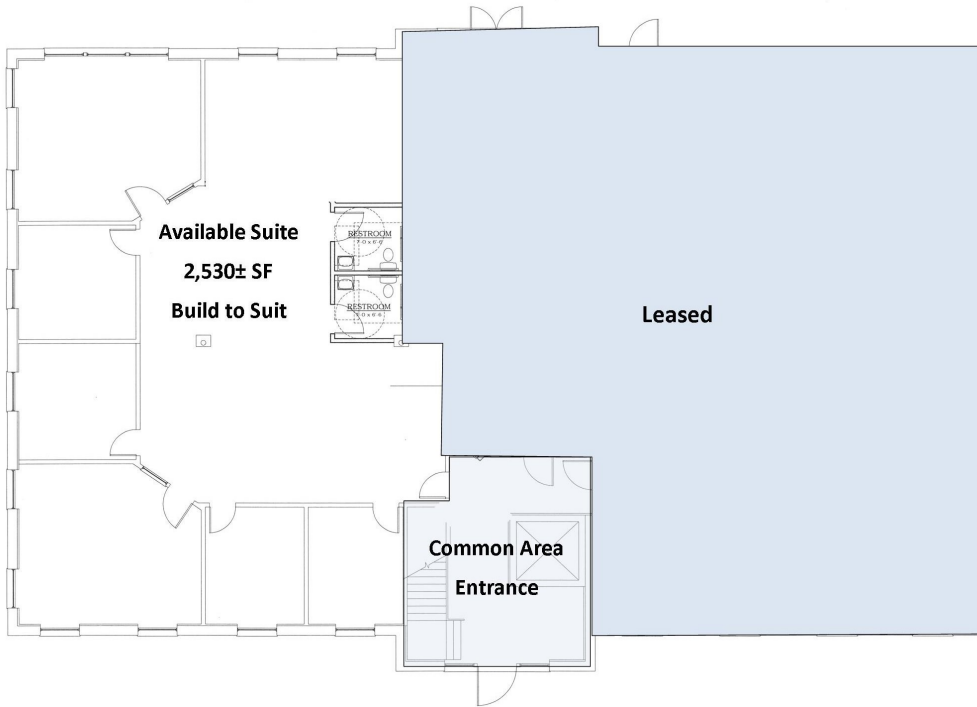
Real Estate Advisors Inc.
BROKER

This information has been secured from sources we believe are reliable, but we make no representations or warranties, expressed or implied, as to the accuracy of the information. References to condition, square footage or age are approximate. Buyer or Tenant acknowledges that they are relying on their own investigations and are not relying on Broker provided information. Procuring broker shall only be entitled to a commission, calculated in accordance with the rates approved by our principal only if such procuring broker executes a brokerage agreement acceptable to us and our principal and the conditions as set forth in the brokerage agreement are fully and unconditionally satisfied. Although all information furnished regarding property for sale, rental, or financing is from sources deemed reliable, such information has not been verified and no express representation is made nor is any to be implied as to the accuracy thereof and it is submitted subject to errors, omissions, change of price, rental or other conditions, prior sale, lease or financing, or withdrawal without notice and to any special conditions imposed by our principal.

34920 Ridge Road

2,530± SF Class A Office Space For Lease

Willoughby, Ohio 44094 (Lake County)



www.GlobalCommercialRE.com

8585 East Ave., Mentor, Ohio 44060

Real Estate Advisors Inc.
BROKER

**Global Real Estate
Advisors, Inc.**

Nancy Stark Zangerle

440-255-5552 x 229

216-316-0913 Cell

Nancy@GlobalCommercialRE.com

Neil Sawicki, SIOR, Broker

440-255-5552 x 221

Neil@GlobalCommercialRE.com

This information has been secured from sources we believe are reliable, but we make no representations or warranties, expressed or implied, as to the accuracy of the information. References to condition, square footage or age are approximate. Buyer or Tenant acknowledges that they are relying on their own investigations and are not relying on Broker provided information. Procuring broker shall only be entitled to a commission, calculated in accordance with the rates approved by our principal only if such procuring broker executes a brokerage agreement acceptable to us and our principal and the conditions as set forth in the brokerage agreement are fully and unconditionally satisfied. Although all information furnished regarding property for sale, rental, or financing is from sources deemed reliable, such information has not been verified and no express representation is made nor is any to be implied as to the accuracy thereof and it is submitted subject to errors, omissions, change of price, rental or other conditions, prior sale, lease or financing, or withdrawal without notice and to any special conditions imposed by our principal.