

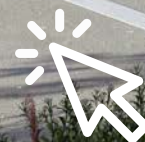
FOR LEASE

IAC COMMERCE CENTER-SEATAC

SEATAC, WA

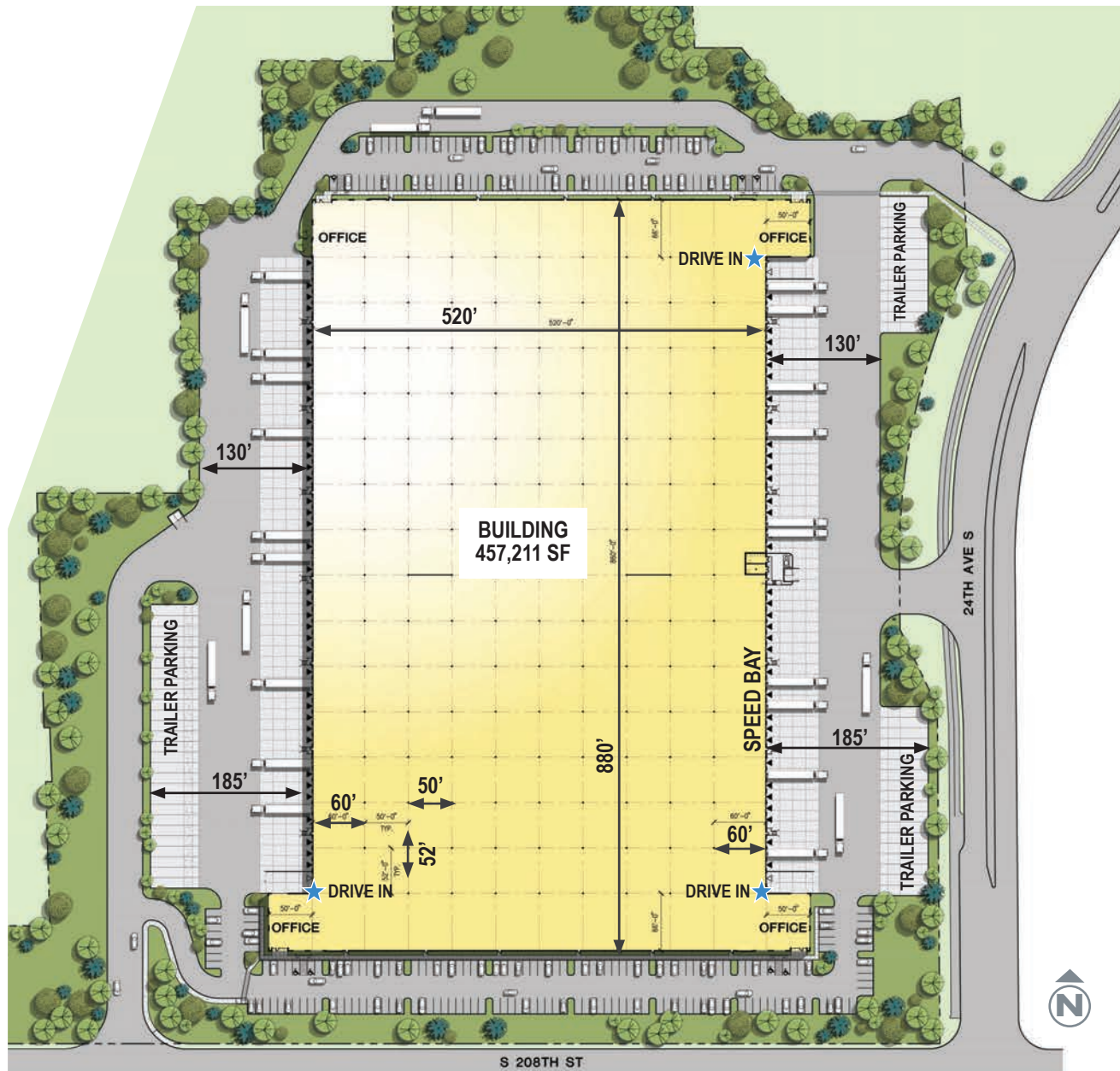
Delivery Date: Second Quarter 2019

State of the Art
457,211 SF
Industrial Building



[VISIT OUR WEBSITE](#)

BUILDING FACTS & SITE PLAN



Building size: 457,211 SF



Build-to-suit office



36' Clear height



130'-185' Truck courts



90 Dock high doors
3 Drive-in doors



58 Trailer parking stalls



255 Car parking stalls



ESFR Sprinkler system



Power 3,000 amps



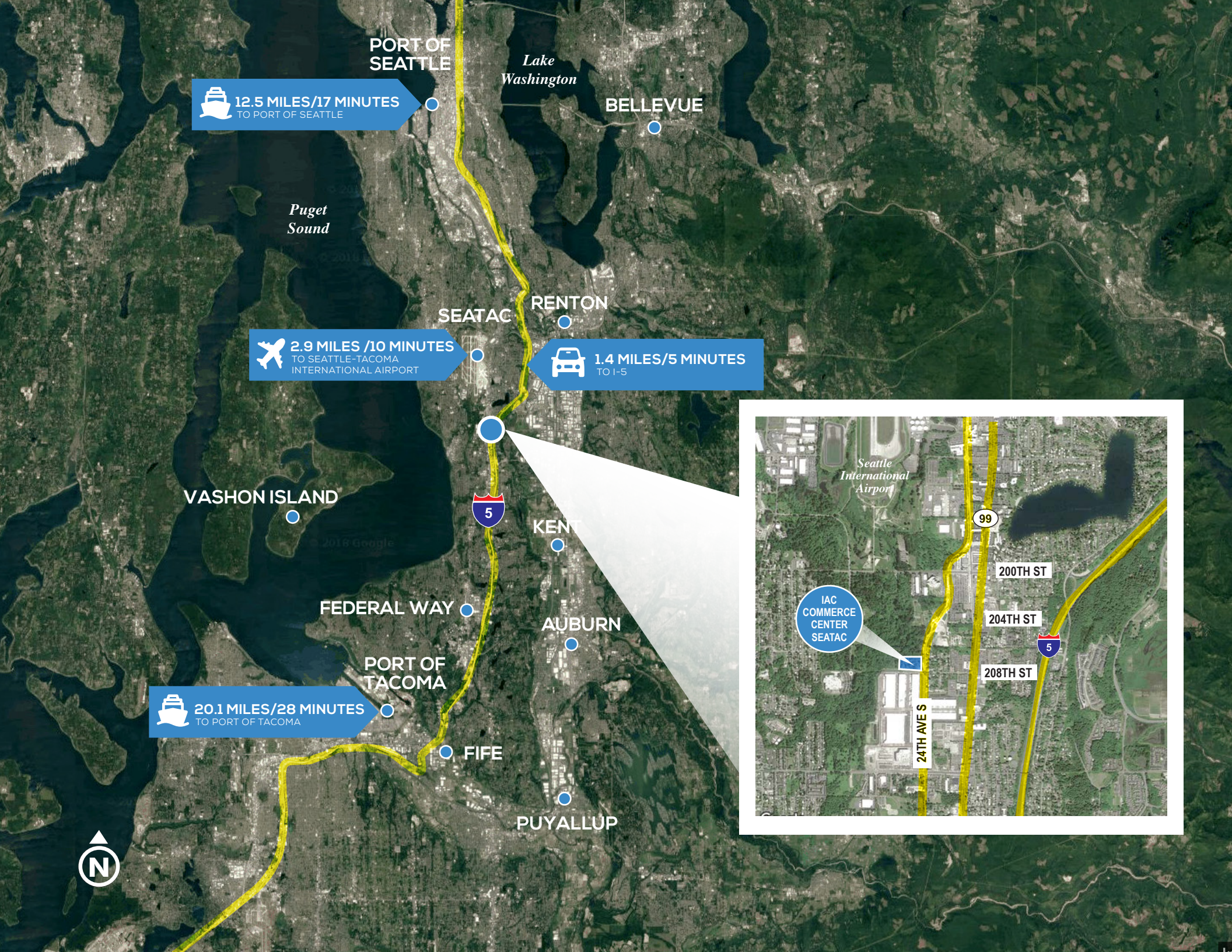
Reinforced 7" Slab



Lighting to suit



Lease rates: subject to offer

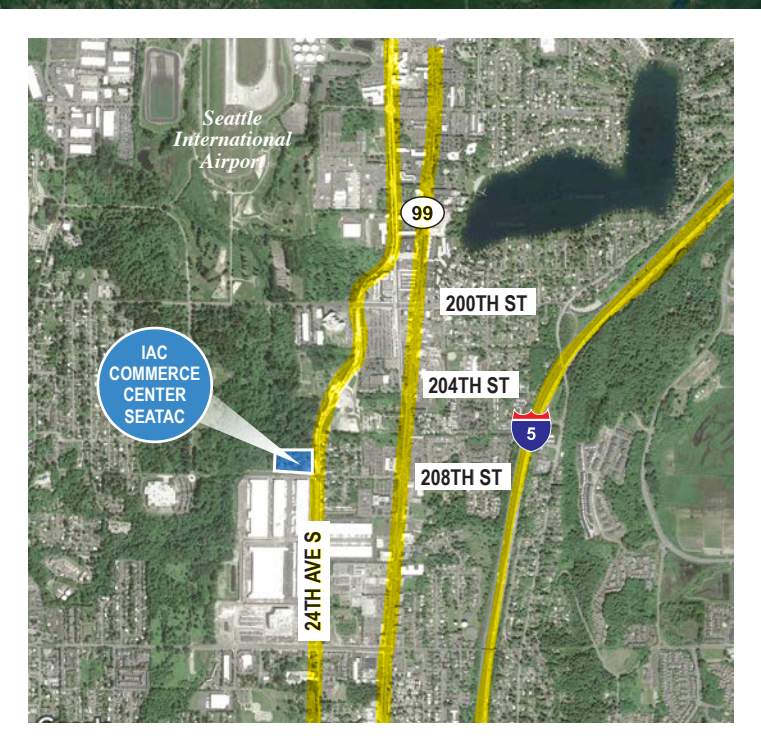


 12.5 MILES/17 MINUTES
TO PORT OF SEATTLE

 2.9 MILES /10 MINUTES
TO SEATTLE-TACOMA
INTERNATIONAL AIRPORT

 1.4 MILES/5 MINUTES
TO I-5

 20.1 MILES/28 MINUTES
TO PORT OF TACOMA



IAC COMMERCE CENTER-SEATAC

S E A T A C , W A

FOR MORE INFORMATION PLEASE CONTACT:

ANDREW STARK

Senior Vice President
+1 206 442 2746
andrew.stark@cbre.com

ANDREW HITCHCOCK

Senior Vice President
+1 206 442 2719
andrew.hitchcock@cbre.com

ZAC SNEDEKER

Senior Associate
+1 206 442 2709
zac.snedeker@cbre.com

CBRE, INC.

1420 Fifth Avenue, 17th Floor
Seattle, WA 98101
cbre.us/seattle



VISIT OUR WEBSITE

© 2018 CBRE, Inc. All rights reserved. This information has been obtained from sources believed reliable, but has not been verified for accuracy or completeness. Any projections, opinions, or estimates are subject to uncertainty. The information may not represent the current or future performance of the property. You and your advisors should conduct a careful, independent investigation of the property and verify all information. Any reliance on this information is solely at your own risk. CBRE and the CBRE logo are service marks of CBRE, Inc. and/or its affiliated or related companies in the United States and other countries. All other marks displayed on this document are the property of their respective owners. Photos herein are the property of their respective owners and use of these images without the express written consent of the owner is prohibited. PMStudio _ November 2018



CBRE