

# 270

## BROADWAY

FINANCIAL DISTRICT | NEW YORK

BEST AVAILABLE  
CORNER ACROSS  
FROM CITY HALL



# THE OPPORTUNITY

Steps from the Ted Weiss Federal Building and Jacob K. Javits Federal Building, with nearly four million SF of office space combined. Incredible pedestrian traffic between the Tribeca, SoHo and Financial District residents, Century 21 shoppers and World Trade Center visitors. Most uses and divisions considered.

## SITE STATUS

Currently Chase

## POSSESSION

Arranged

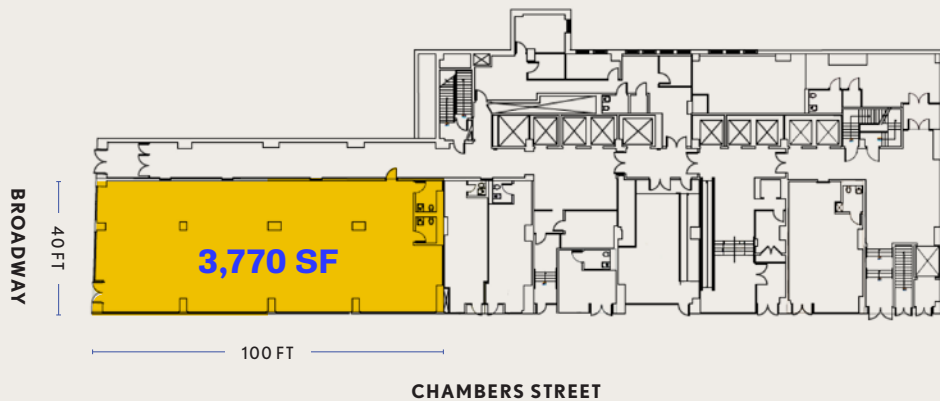
## TERM

Negotiable

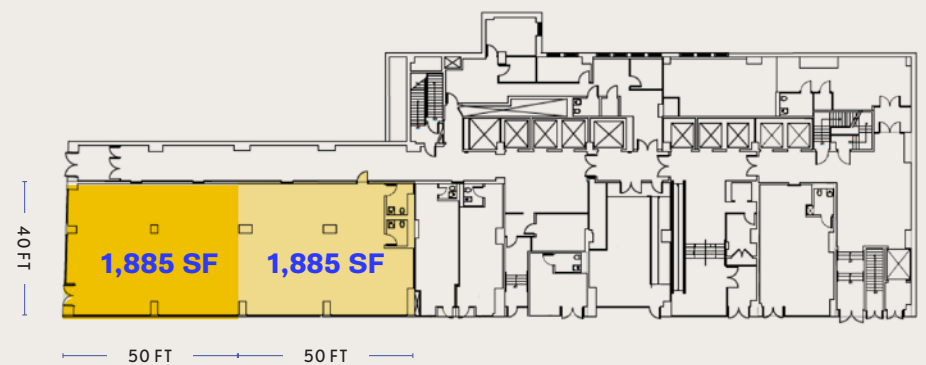
## FRONTAGE

40 FT on Broadway

100 FT on Chambers Street



**GROUND FLOOR**



**PROPOSED DIVISION**

TWEED COURTHOUSE



THE FULTON CENTER



# THE NEIGHBORHOOD



Capital One Bank, 'wichcraft, Duane Reade, Bank of America, Pret A Manger, Starbucks, Chipotle Mexican Grill, TD Bank, Citibank, T-Mobile, AT&T, First Republic Bank, and Potbelly Sandwich Shop

- 50K** | Employees near City Hall area
- 600K** | Jurors near City Hall area
- 28M** | Annual subway riders on 4,5,6,J,1,2,3,A,C,R lines
- 4M** | Square feet of office space in neighboring buildings



# CONTACT EXCLUSIVE AGENTS

**RAVI IDNANI**  
 212.916.2938  
 ravi.idnani@ngkf.com

**ANDREW STERN**  
 212.351.9353  
 andrew.stern@ngkf.com

 **Newmark Knight Frank**  
 A TIAA Company

 **nuveen**  
 A TIAA Company

NGKF.COM

© 2019 NEWMARK KNIGHT FRANK RETAIL  
 The information contained herein has been obtained from sources deemed reliable but has not been verified and no guarantee, warranty or representation, either express or implied, is made with respect to such information. Terms of sale or lease and availability are subject to change or withdrawal without notice.