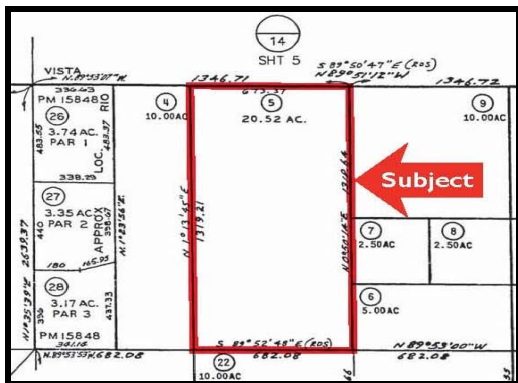
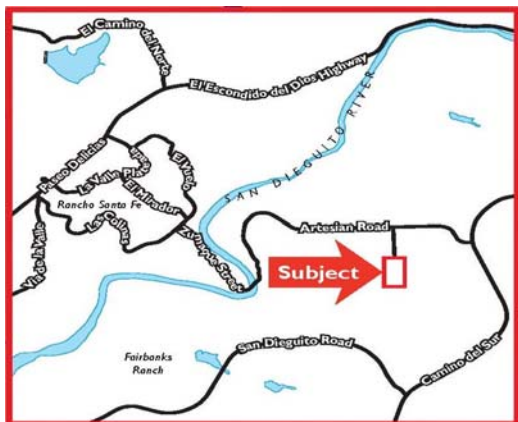


FOR SALE

# LENDER OWNED \$3,500,000 20 ACRE RANCHETTE

## RANCHO SANTA FE, CALIFORNIA

RANCHO SANTA FE , CALIFORNIA



### STATISTICS

#### LOCATION:

Artesian Road, south on Caminito Del Vientecito  
Rancho Santa Fe, California

#### SIZE:

20.52 Acres

#### ZONE:

Estate Development Area  
2 Acre Lots

#### COMMENTS:

Located in the vibrant and exclusive San Diego neighborhood of Rancho Santa Fe, a dynamic area with unique character and spectacular natural beauty, Santa Fe Meadows is graced with gently rolling hills and breathtaking views.

CIARA LAYNE

858.677.5387

ciara.layne@colliers.com

DAVID SANTISTEVAN

858.677.5314

david.santistevan@colliers.com

COLLIERS INTERNATIONAL  
4660 La Jolla Village Drive, #100  
San Diego, California 92122  
858.455.1515 Main  
858.546.9146 Fax  
www.colliers.com

COLLIERS  
INTERNATIONAL

Our Knowledge is your Property