

For Lease
1,598 SF Office Space
in Historic LoDo



2046 Larimer Street Denver, Colorado 80205

Property Overview

- 8 offices totalling 1,598 SF with private entrance
- Centrally located in historic LoDo, within short walking distance to Union Station and Coors Field
- Surrounded by numerous restaurants and shops
- WalkScore of 95, BikeScore of 92, Transit Score of 83
- Great access to Broadway & I-25
- Short term lease available

Lease Rate: \$17.00/SF NNN

NO WARRANTY OR REPRESENTATION, EXPRESS OR IMPLIED, IS MADE AS TO THE ACCURACY OF THE INFORMATION CONTAINED HEREIN, AND THE SAME IS SUBMITTED SUBJECT TO ERRORS, OMISSIONS, CHANGE OF PRICE, RENTAL OR OTHER CONDITIONS, PRIOR SALE, LEASE OR FINANCING, OR WITHDRAWAL WITHOUT NOTICE, AND OF ANY SPECIAL LISTING CONDITIONS IMPOSED BY OUR PRINCIPALS NO WARRANTIES OR REPRESENTATIONS ARE MADE AS TO THE CONDITION OF THE PROPERTY OR ANY HAZARDS CONTAINED THEREIN ARE ANY TO BE IMPLIED.

Property Facts

Available SF:	1,598 SF
Year Built / Renov.:	1926
Stories:	3

For more information:

Kiley Crews

720 881 7542

kcrews@shamesmakovsky.com

1400 Glenarm Place, Suite 100

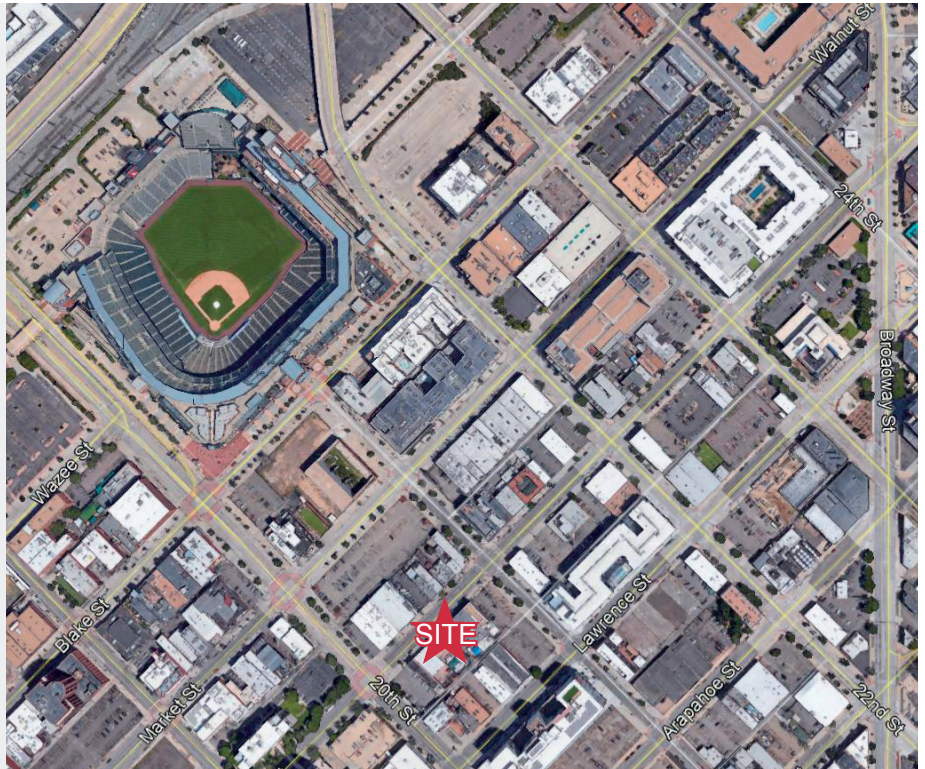
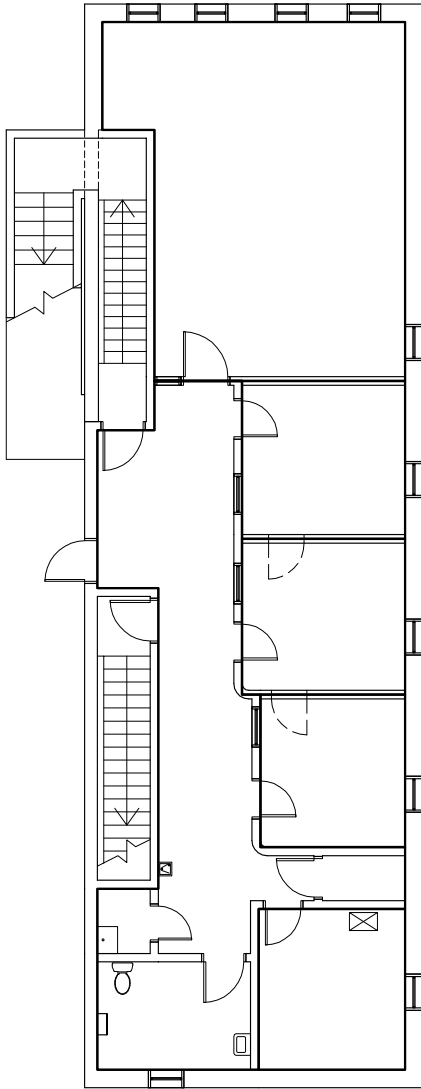
Denver, CO 80202

303 534 5005

naishamesmakovsky.com

Office For Lease

2046 Larimer St.
Denver, Colorado



For more information:

Kiley Crews

720 881 7542

kcrews@shamesmakovsky.com

NAIShames Makovsky

1400 Glenarm Place, Suite 100

Denver, CO 80202

303 534 5005

naishamesmakovsky.com