



Property Features

- Attractive brick office building
- Move-in ready second story spaces
- Up to 5,377 SF available
- Route 610 signage available
- Convenient to nearby amenities
- 0.6 miles from Interstate I-95 exit 143
- Located on a major commercial route with a dense residential population
- 72,000 VPD
- Utilities included in rent
- Lease rate is \$18.50 PSF plus janitorial & internet

Suite	Size	Monthly Rent
Suite 201	3,056 SF	\$4,711 / Month
Suite 203	957 SF	\$1,475 / Month
Suite 205	1,364 SF	\$2,103 / Month
Suite 201 & 203	4,420 SF	\$6,814 / Month
Suite 203 & 205	2,321 SF	\$3,578 / Month
Suites 201,203 & 205	5,377 SF	\$8,290 / Month
Timing	Available Immediately	

Demographics			
	1 Mile	3 Miles	5 Miles
Population	13,034	51,188	76,667
No. of Households	4,377	16,674	23,735
Avg. HH Income	\$108,689	\$126,218	\$132,237
Daytime Population	7,005	11,501	20,988

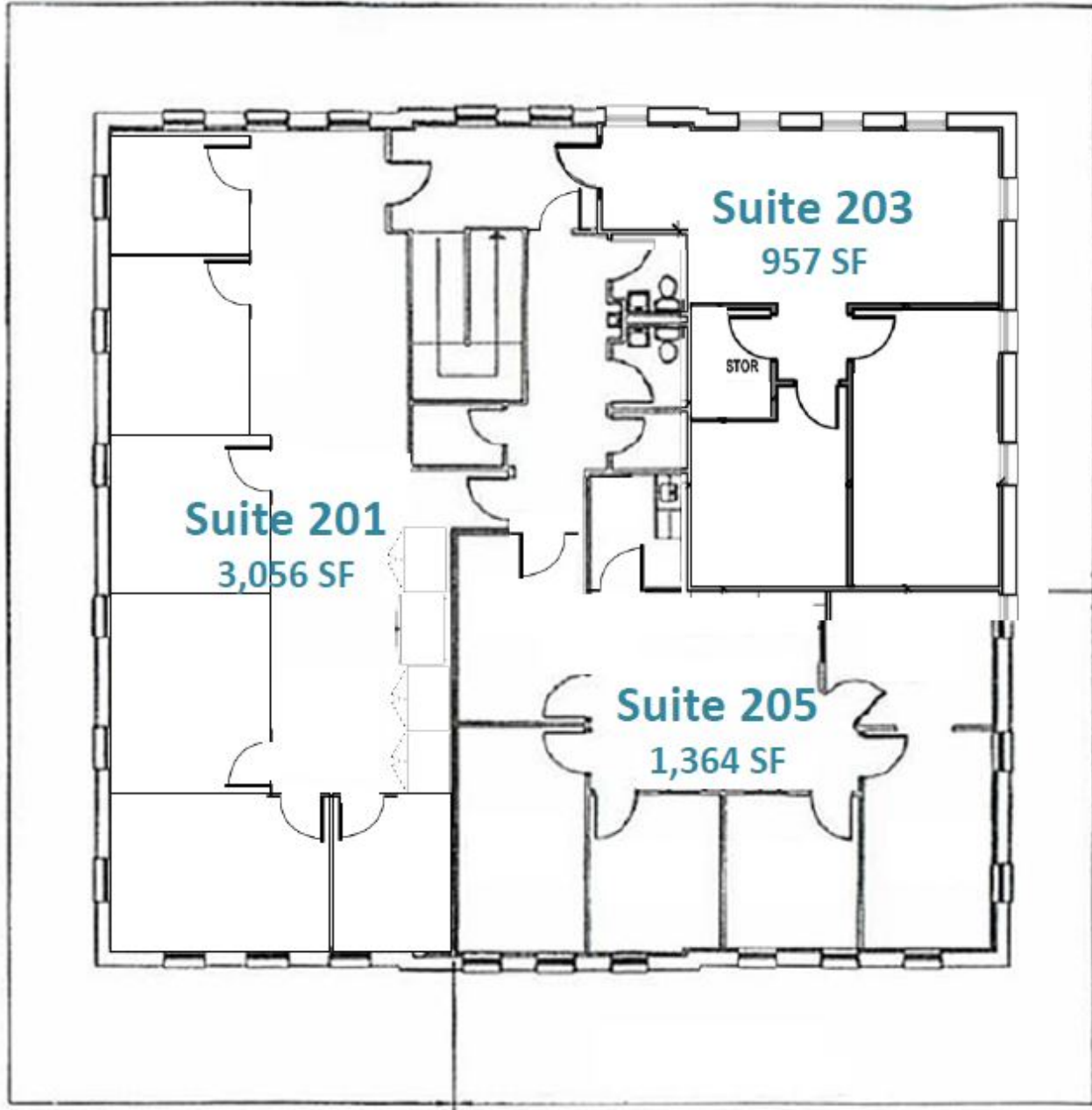
For more information, contact:

WILSON GREENLAW, CCIM
 Vice President
 540 322 4156
wilson.greenlaw@thalhimer.com

Eagle Village
 1125 Jefferson Davis Highway, Suite 350
 Fredericksburg, VA 22401
www.thalhimer.com

Independently Owned and Operated / A Member of the Cushman & Wakefield Alliance

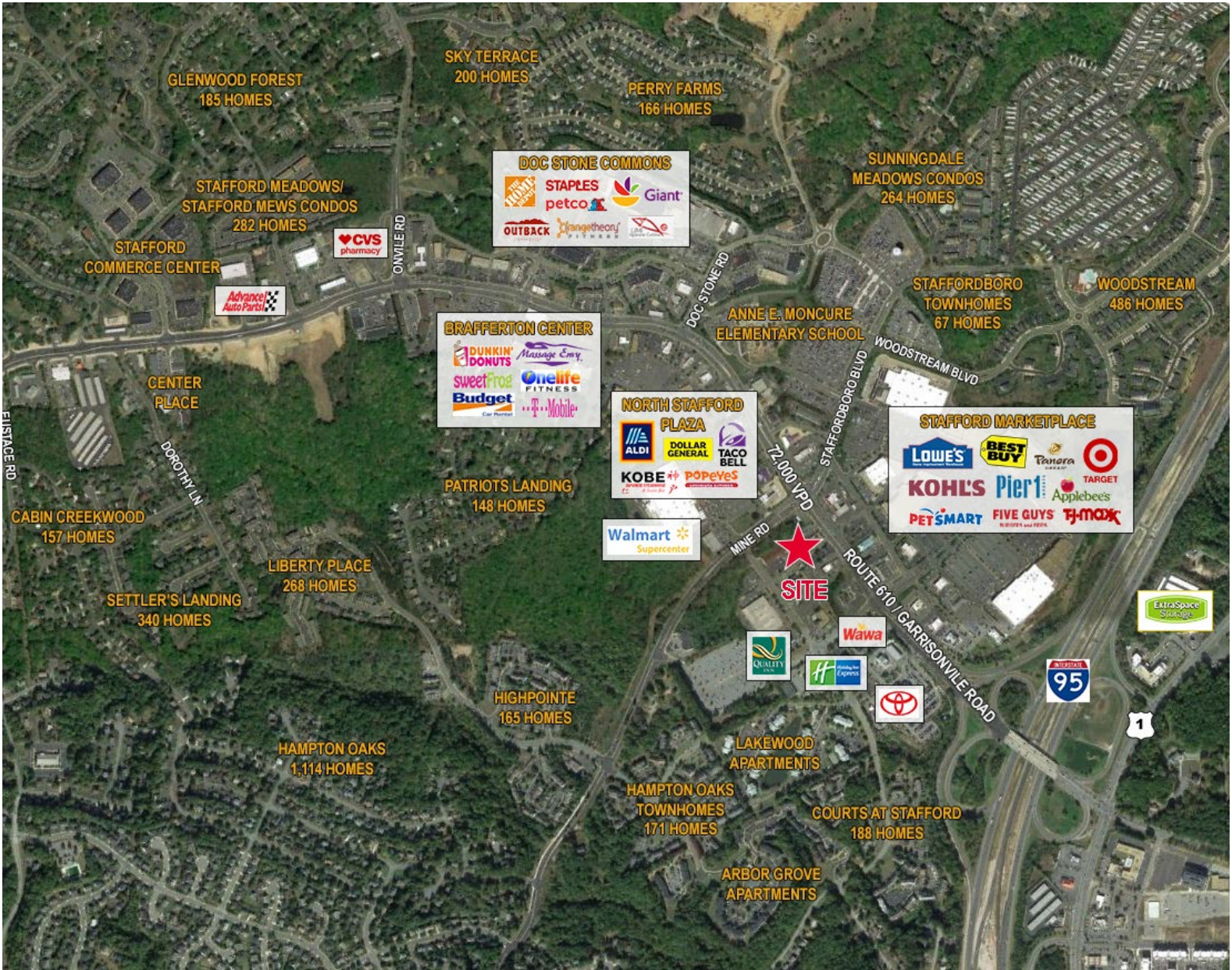
Cushman & Wakefield | Thalhimer © 2015. No warranty or representation, express or implied, is made to the accuracy or completeness of the information contained herein, and same is submitted subject to errors, omissions, change of price, rental or other conditions, withdrawal without notice, and to any special listing conditions imposed by the property owner(s). As applicable, we make no representation as to the condition of the property (or properties) in question.



For more information, contact:

WILSON GREENLAW, CCIM
Vice President
540 322 4156
wilson.greenlaw@thalhimer.com

Eagle Village
1125 Jefferson Davis Highway, Suite 350
Fredericksburg, VA 22401
www.thalhimer.com



For more information, contact:

WILSON GREENLAW, CCIM
 Vice President
 540 322 4156
wilson.greenlaw@thalhimer.com

Eagle Village
 1125 Jefferson Davis Highway, Suite 350
 Fredericksburg, VA 22401
www.thalhimer.com