



Industrial Space Available  
**FOR LEASE**

1709 16th Street • Bakersfield, CA



**Property Highlights**

- Located downtown next to Bakersfiel Police Department
- Highly secured building
- Walk-in valut
- Ample parking
- Automatic roll-up doors

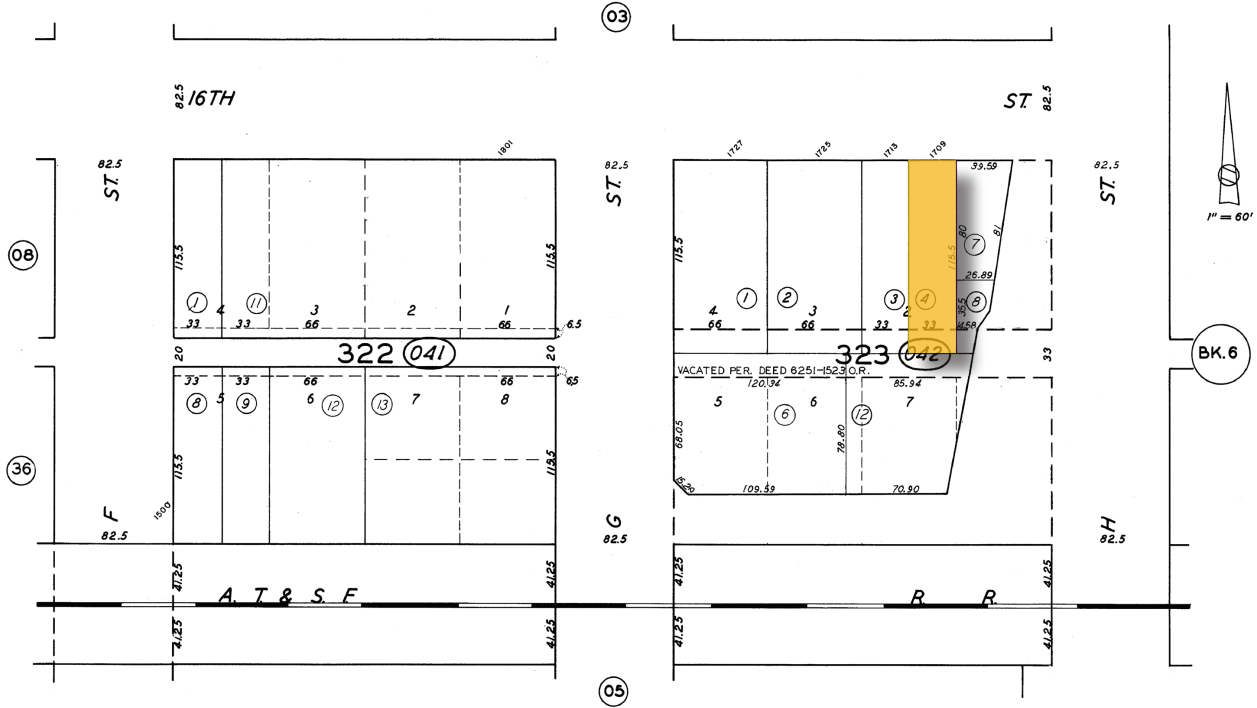
**Barry G. Hibbard** ▪ Senior Vice President ▪ 661 616 3590 ▪ bhibbard@asuassociates.com ▪ CA RE #01054317  
11601 Bolthouse Drive Suite 110 ▪ Bakersfield, CA 93311 ▪ 661 862 5454 main ▪ 661 862 5444 fax

# Industrial Space • Available For Lease

1709 16th Street • Bakersfield, CA

Assessor's Parcel Map & Property Photos

APN: 004-042-04



# Industrial Space • Available For Lease

1709 16th Street • Bakersfield, CA

## Aerial Map

