



# FORMER BANK BRANCH AVAILABLE

MERIDIANVILLE, ALABAMA

## SALE

12310 Highway 231  
Meridianville, AL 35759

## BUILDING SIZE

4,520 SF

## COMMENTS

- Highly visible location
- Former bank branch offers 3 drive-thru lanes
- 17 surface parking spaces
- Constructed in 2003
- Located on .67 acre outparcel in front of the Publix-anchored Flint Crossing Market Place
- Suitable for a variety of uses

## PRICING

\$750,000

## EXCLUSIVE AGENT

Tyler Fanning  
tylerf@grahamcompany.com  
256.382.9010



1500 Perimeter Parkway  
Suite 150  
Huntsville, AL 35806

TEL 256.382.9010  
FAX 256.382.9011  
grahamcompany.com

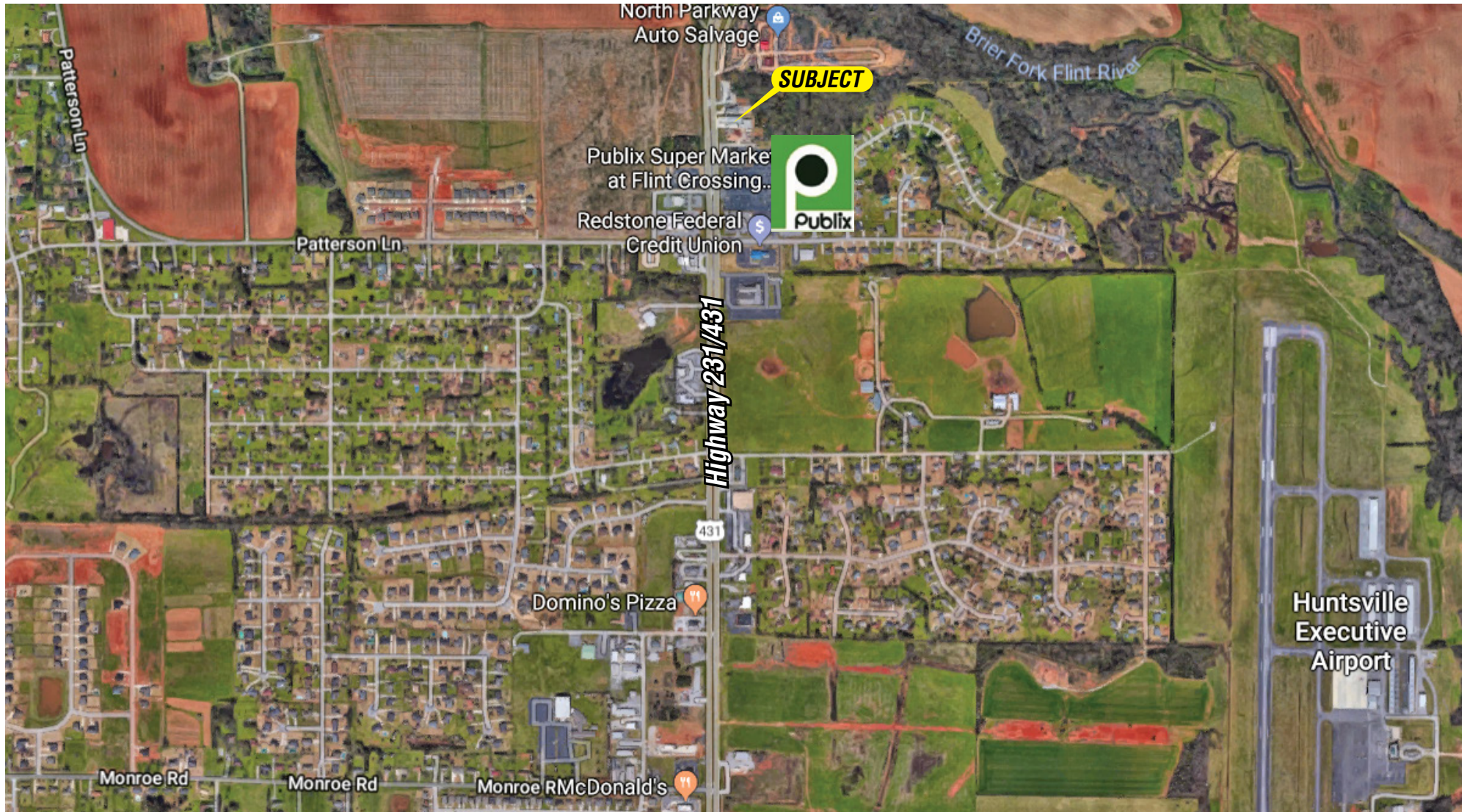
Information deemed reliable, but not guaranteed.





# FORMER BANK BRANCH AVAILABLE

MERIDIANVILLE, ALABAMA



1500 Perimeter Parkway  
Suite 150  
Huntsville, AL 35806

TEL 256.382.9010  
FAX 256.382.9011  
grahamcompany.com

Information deemed reliable, but not guaranteed.