

Retail For Lease

Wheaton Mall

3445 Wheaton Way
Bremerton, WA



Property Highlights

Now open - Do it Best Henery Hardware

Newly constructed pad with Starbucks and Kitsap Bank

Across from Walgreens

Strong traffic counts with over 33,540 vehicles per day on Wheaton Way

Available Spaces:

- 1,600 SF \$9.50 PSF/NNN (former Angie's Divine Image)
- 1,600 SF \$9.50 PSF/NNN (former Westside Pizza)
- 8,000 SF \$12.00 PSF/NNN (former #1 Buffet)
- 21,417 SF \$7.50 PSF/NNN (former Dollar Store space)

2010 DEMOGRAPHICS

	1 mile	3 mile	10 min
Population	12,433	57,445	74,865
Households	5,419	22,836	29,713
Average HH Income	\$51,231	\$57,011	\$57,434
Daytime Population	5,285	25,022	32,681

Contact

Eric Bissell
425.450.1121
ebissell@kiddermathews.com

Brad Bissell
425.450.1182
bbissell@kiddermathews.com

Wheaton Mall

Site Plan



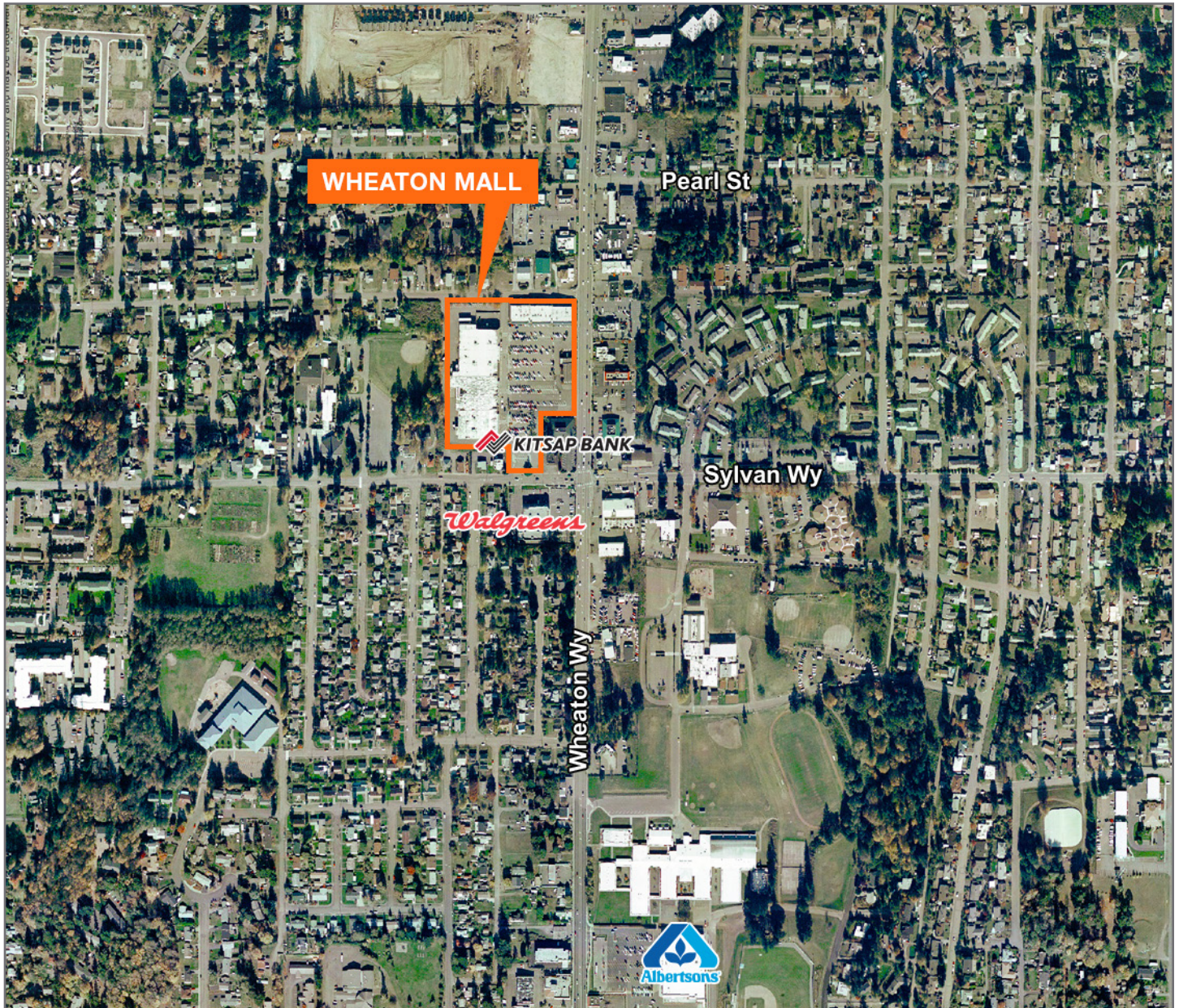
Contact

Eric Bissell
425.450.1121
ebissell@kiddermathews.com

Brad Bissell
425.450.1182
bbissell@kiddermathews.com

Wheaton Mall

Location Aerial



Contact

Eric Bissell
425.450.1121
ebissell@kiddermathews.com

Brad Bissell
425.450.1182
bbissell@kiddermathews.com

Wheaton Mall

Demographics

	1 MILE	3 MILE	10 MINUTE DRIVE
Population			
2015 Projection	12,530	57,565	74,846
2010 Estimate	12,433	57,445	75,766
2000 Census	12,048	56,694	74,865
Annual Growth 2010-2015	0.16%	0.04%	0.02%
2010 Daytime Population	5,285	25,022	32,681
2010 Households			
2015 Projection	5,474	22,928	29,802
2010 Estimate	5,419	22,836	29,713
2000 Census	5,204	22,281	29,106
Annual Growth 2010-2015	0.2%	0.08%	0.06%
Owner Occupied	43.2%	49.9%	48.5%
Renter Occupied	49.3%	39.5%	41.1%
2010 Households by Household Income			
Income Less than \$15,000	14.7%	11.9%	11.5%
Income \$15,000 - \$24,999	13.3%	10.4%	10.2%
Income \$25,000 - \$34,999	11.5%	10.6%	10.3%
Income \$35,000 - \$49,999	18.1%	17.9%	17.8%
Income \$50,000 - \$74,999	22.5%	24.6%	25.1%
Income \$75,000 - \$99,999	11.3%	13.0%	13.7%
Income \$100,000 - \$149,999	6.7%	9.1%	9.1%
Income \$150,000 - \$199,000	1.5%	1.6%	1.5%
Income \$200,000+	0.5%	0.8%	0.8%
2010 Average Household Income	\$51,231	\$57,011	\$66,103
2010 Median Household Income	\$44,647	\$49,413	\$50,215
2010 Per Capita Income	\$22,633	\$23,476	\$23,291
2010 Population by Race			
White	72.2%	75.3%	75.0%
Black	6.2%	5.7%	5.4%
American Indian	1.4%	1.6%	1.5%
Asian and Pacific Islander	9.5%	7.9%	8.9%
Other Race Alone	2.4%	2.5%	2.4%
Two or More Races	8.4%	7.0%	6.8%
Hispanic	6.8%	6.9%	6.7%