

6000 Shoreline Court

San Francisco, CA

Building Signage Available to Promote Your Business

Spectacular views of San Francisco Bay

Partial and full floors available - divisible to 1,552 SF

Flexible lease terms

Mix of private offices and open space

\$3.25/SF/month, fully serviced

On-site parking and gym

Retail amenities, public transportation and free shuttle service to and from Balboa BART and Millbrae Transit Center



AVAILABILITIES

Suite 301A	±2,258 SF
Suite 201	±1,552 SF
Suite 204	±13,722 SF
Suite 206/207	±6,514 SF
2nd Floor Total	±21,780 SF
Suite 102	±7,958 SF
Total	31,996 SF

Contact

Bruce McLellan

415.229.8981

brucem@kiddermathews.com

LIC #00879071

Jaclyn Marshall, LEED® AP

415.229.8894

jaclynm@kiddermathews.com

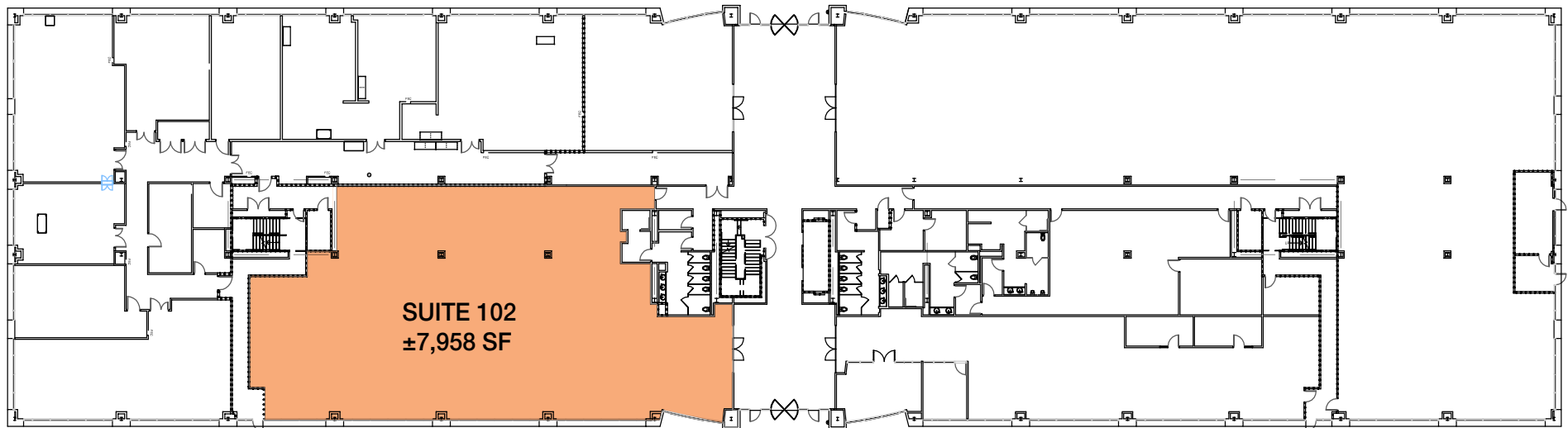
LIC #01846532



Contact

Bruce McLellan
415.229.8981
brucem@kiddermathews.com
LIC #00879071

Jaclyn Marshall, LEED® AP
415.229.8894
jaclynm@kiddermathews.com
LIC #01846532



First Floor ±7,958 SF

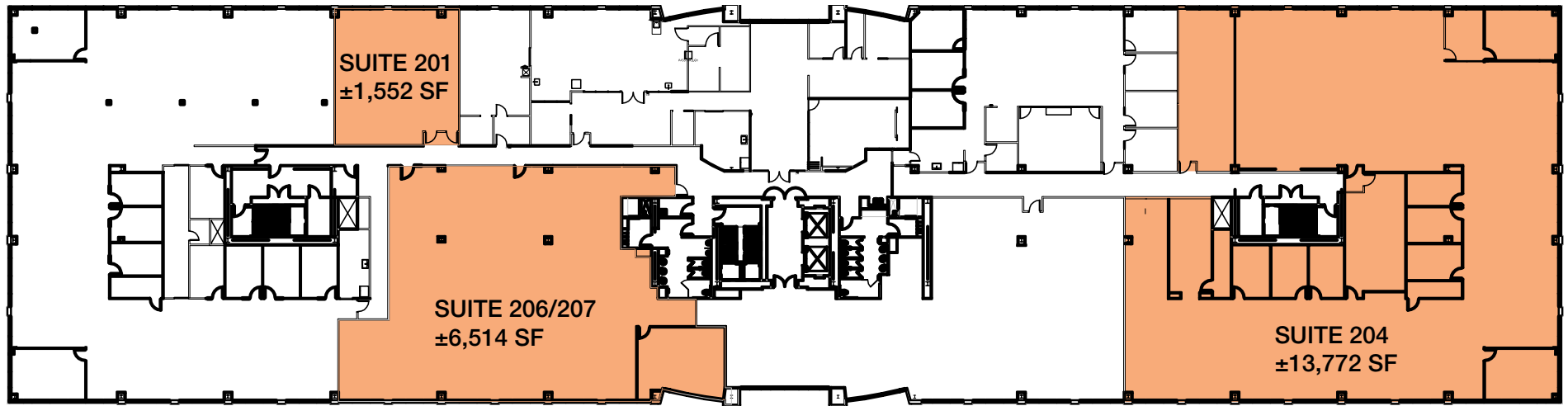
*Floor plan not to scale

- On-site gym with showers
- Existing office space is open plan

Contact

Bruce McLellan
415.229.8981
brucem@kiddermathews.com
LIC #00879071

Jaclyn Marshall, LEED® AP
415.229.8894
jaclynm@kiddermathews.com
LIC #01846532



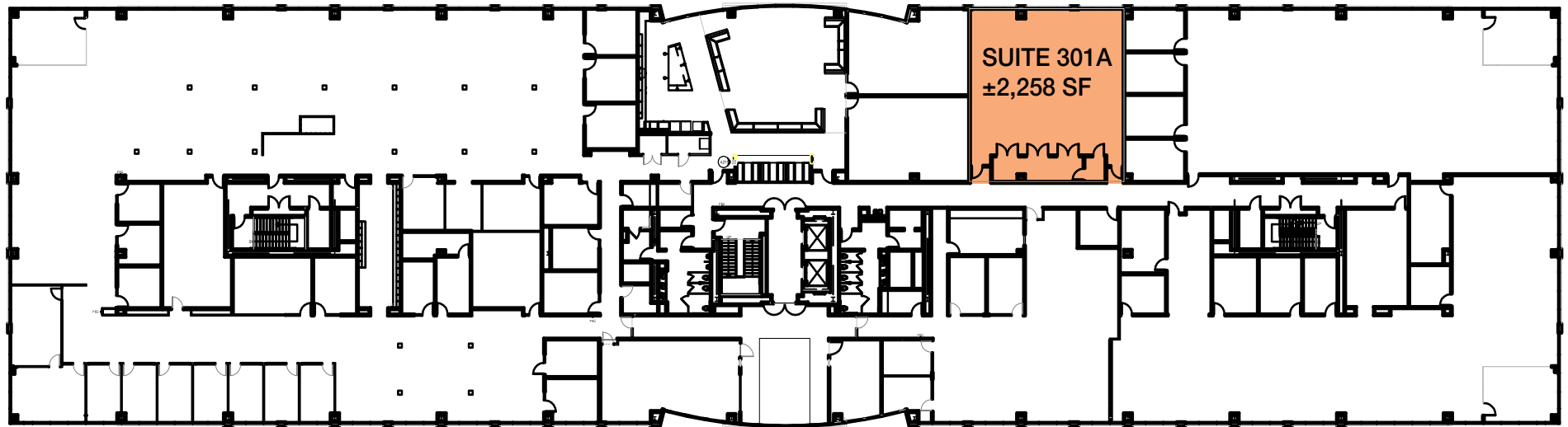
Second Floor ±21,838 SF

*Floor plan not to scale

Contact

Bruce McLellan
415.229.8981
brucem@kiddermathews.com
LIC #00879071

Jaclyn Marshall, LEED® AP
415.229.8894
jaclynm@kiddermathews.com
LIC #01846532



Third Floor ±2,258 SF

*Floor plan not to scale

Contact

Bruce McLellan
415.229.8981
brucem@kiddermathews.com
LIC #00879071

Jaclyn Marshall, LEED® AP
415.229.8894
jaclynm@kiddermathews.com
LIC #01846532



Contact

Bruce McLellan
415.229.8981
brucem@kiddermathews.com
LIC #00879071

Jaclyn Marshall, LEED® AP
415.229.8894
jaclynm@kiddermathews.com
LIC #01846532