

DEPTFORD PLAZA

CLEMENTS BRIDGE ROAD & HURFFVILLE ROAD, DEPTFORD, NJ

±22,746 - 62,749 SF AVAILABLE FOR LEASE

— SURROUNDING TENANTS —



property highlights.

- Highly visible from Route 42, Route 41, and Clements Bridge Road. Combined traffic counts in excess of 154,000 VPD
- Excellent visibility and access from Hurffville Road and Clements Bridge Road
- Super regional location close proximity to South Philadelphia, PA with dense population
- Close proximity to the Deptford Mall

stats.

EST. POPULATION	6,609	85,488	246,034
EST. HOUSEHOLDS	2,668	34,022	96,149

CLEMENTS BRIDGE ROAD TRAFFIC COUNT: 28,411 VPD *ESRI 2018



get in touch.

DAN BRICKNER

office 856.866.1900
direct 856.222.3031
dbrickner@metrocommercial.com

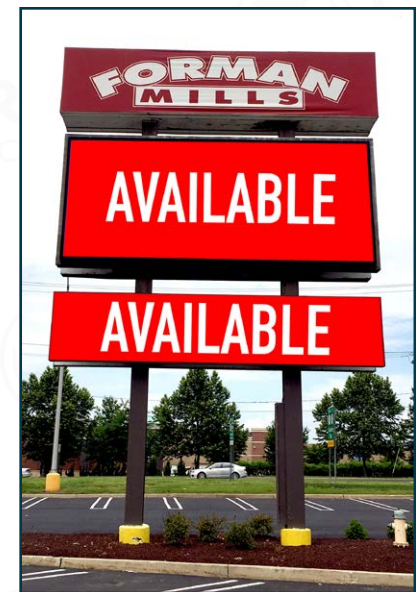
DAVID JUDD

office 856.866.1900
direct 856.222.3037
djudd@metrocommercial.com



AVAILABLE
 $\pm 40,003$ SF

AVAILABLE
 $\pm 22,746$ SF



The information and images contained herein are from sources deemed reliable. However, Metro Commercial Real Estate, Inc. makes no representation whatsoever as to their accuracy or authenticity. Images shown may be modified for illustrative purposes. Images may be out-of-date and not current. 12.17.19

CLEMETS BRIDGE ROAD & HURFFVILLE ROAD



The information and images contained herein are from sources deemed reliable. However, Metro Commercial Real Estate, Inc. makes no representation whatsoever as to their accuracy or authenticity. Images shown may be modified for illustrative purposes. Images may be out-of-date and not current. 12.17.19

CLEMENTS BRIDGE ROAD & HURFFVILLE ROAD



The information and images contained herein are from sources deemed reliable. However, Metro Commercial Real Estate, Inc. makes no representation whatsoever as to their accuracy or authenticity. Images shown may be modified for illustrative purposes. Images may be out-of-date and not current. 12.17.19

CLEMENTS BRIDGE ROAD & HURFFVILLE ROAD