



FOR LEASE

# Mendota Heights Business Center

2520 Pilot Knob Road  
Mendota Heights, MN



[HOME](#)

[HIGHLIGHTS](#)

[AVAILABLE](#)

[LOCATION](#)

For more information, please contact:

**Dan Gleason**  
Executive Director  
+1 952 893 8884  
[dan.gleason@cushwake.com](mailto:dan.gleason@cushwake.com)

**Dan Nechanicky**  
Senior Director  
+1 952 820 8675  
[dan.nechanicky@cushwake.com](mailto:dan.nechanicky@cushwake.com)

**Cushman & Wakefield**  
3500 American Blvd W Suite 200  
Bloomington, MN 55431  
[cushmanwakefield.com](http://cushmanwakefield.com)

# Mendota Heights Business Center

2520 Pilot Knob Road, Mendota Heights, MN



HOME

HIGHLIGHTS

AVAILABLE

LOCATION

## Property Highlights

- Attractive 72,000 square foot, single-story office project
- Extensive windows and end-cap spaces
- Custom design space using Class A finishes
- Located 5 minutes from the Minneapolis/ St. Paul International Airport
- Immediate access to I-494, I-35E, Highway 55 and Highway 13
- Close, convenient parking

## BUILDING INFORMATION

BUILDING SIZE	72,000 sq. ft.
YEAR BUILT	1981
CLEAR HEIGHT	12 Feet
AVAILABLE SQ. FT.	3,575
PARKING RATIO	4.5/1,000
LEASE RATE	\$12.00 Net psf
2019 CAM & Tax	\$4.74 per sq. ft.



For more information, please contact:

**Dan Gleason**  
Executive Director  
+1 952 893 8884  
dan.gleason@cushwake.com

**Dan Nechanicky**  
Senior Director  
+1 952 820 8675  
dan.nechanicky@cushwake.com

**Cushman & Wakefield**  
3500 American Blvd W Suite 200  
Bloomington, MN 55431  
cushmanwakefield.com

# Mendota Heights Business Center

2520 Pilot Knob Road, Mendota Heights, MN



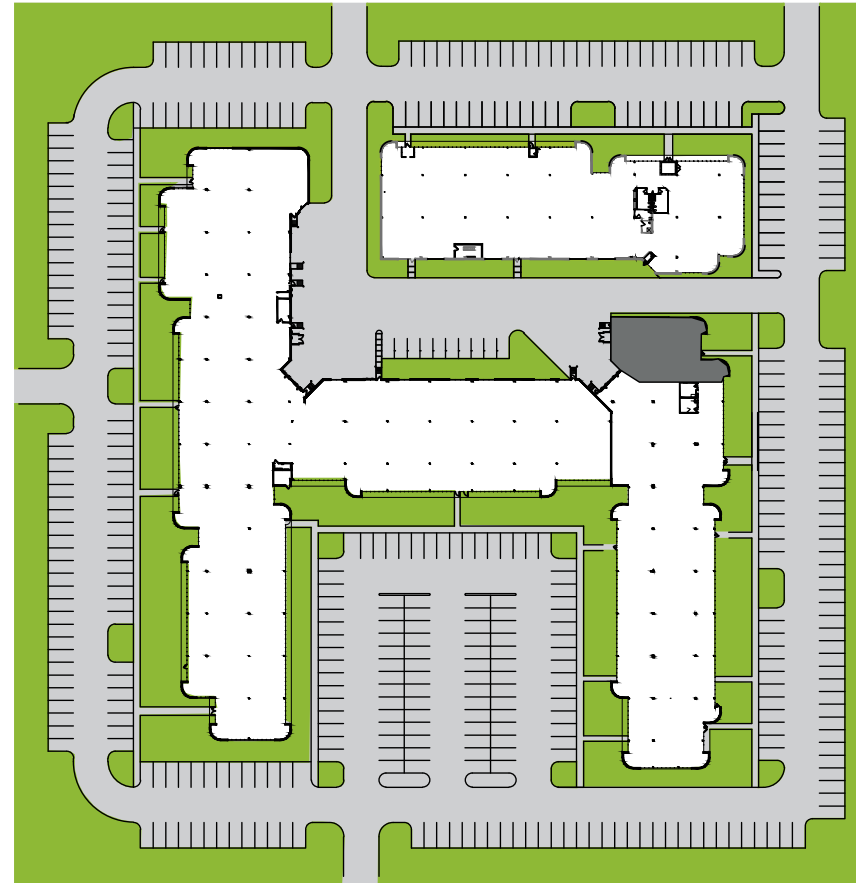
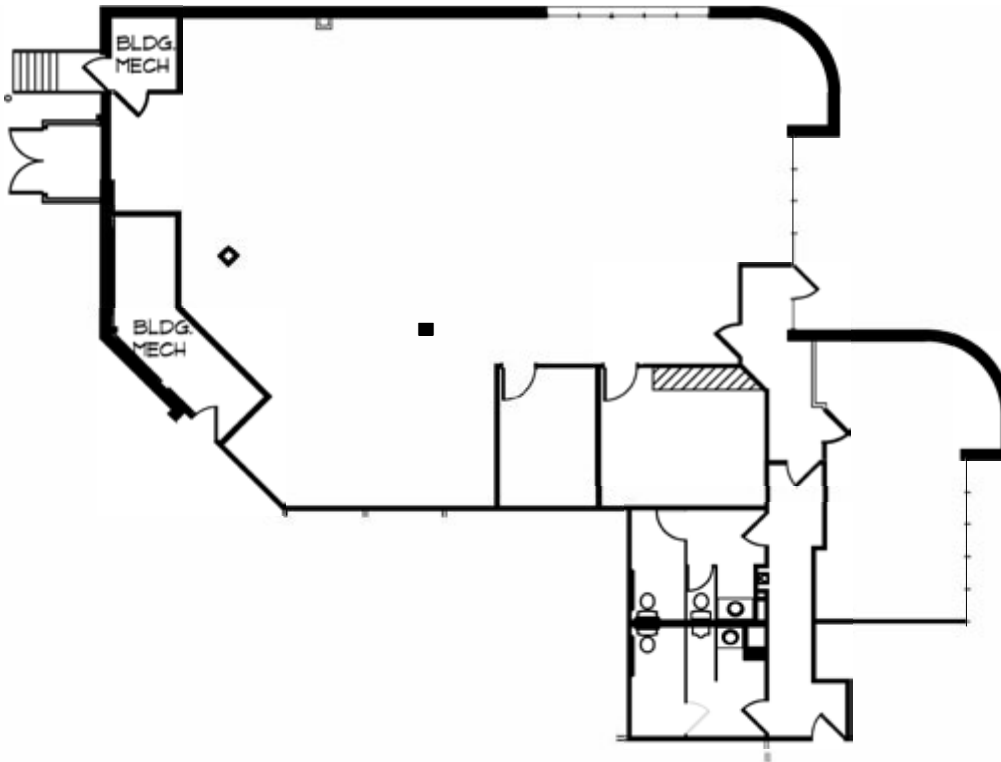
HOME

HIGHLIGHTS

AVAILABLE

LOCATION

Suite 300 - 3,575 RSF



For more information, please contact:

**Dan Gleason**  
Executive Director  
+1 952 893 8884  
dan.gleason@cushwake.com

**Dan Nechanicky**  
Senior Director  
+1 952 820 8675  
dan.nechanicky@cushwake.com

**Cushman & Wakefield**  
3500 American Blvd W Suite 200  
Bloomington, MN 55431  
cushmanwakefield.com



# Mendota Heights Business Center

2520 Pilot Knob Road, Mendota Heights, MN

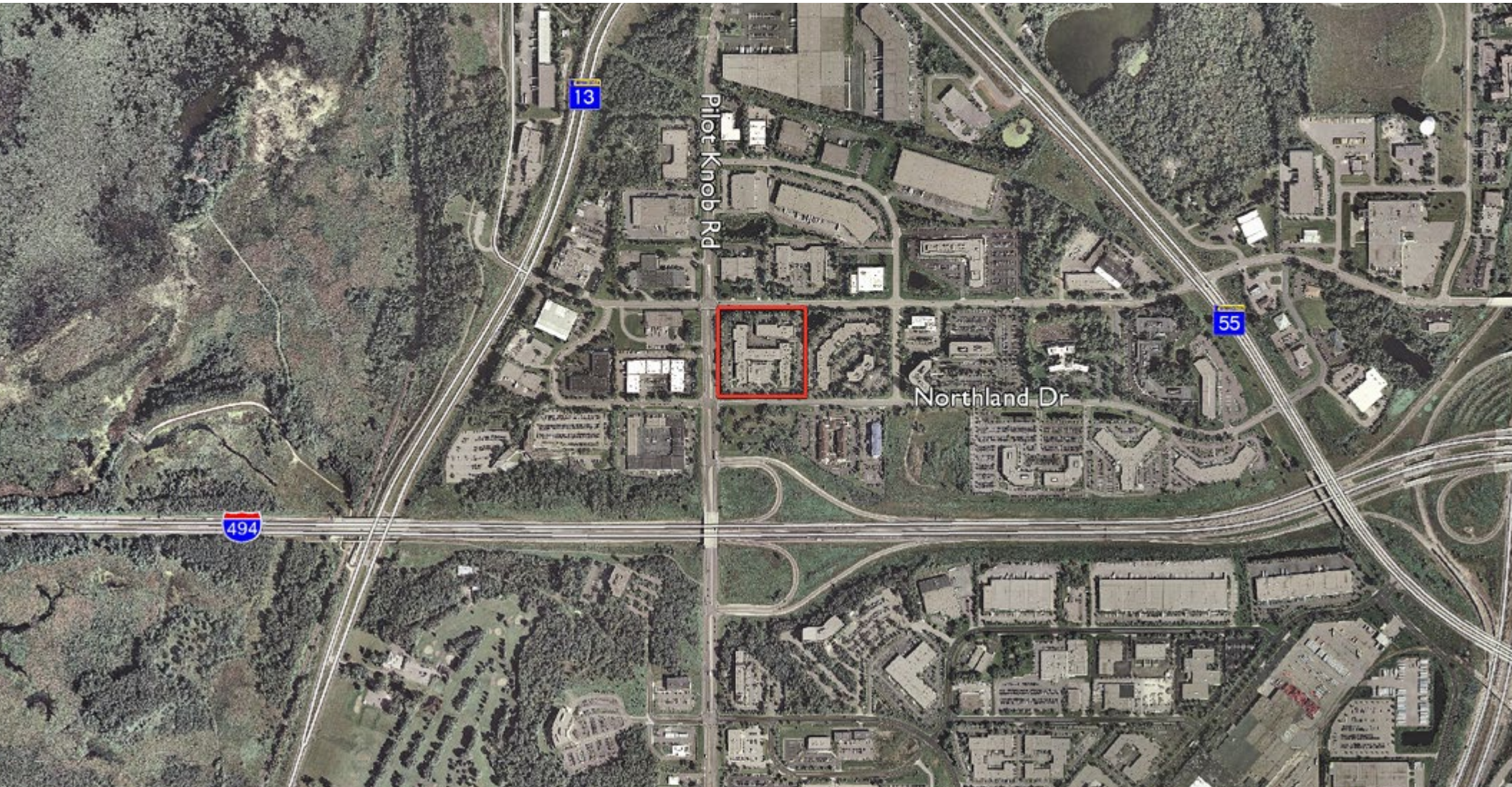


HOME

HIGHLIGHTS

AVAILABLE

LOCATION



For more information, please contact:

**Dan Gleason**  
Executive Director  
+1 952 893 8884  
dan.gleason@cushwake.com

**Dan Nechanicky**  
Senior Director  
+1 952 820 8675  
dan.nechanicky@cushwake.com

**Cushman & Wakefield**  
3500 American Blvd W Suite 200  
Bloomington, MN 55431  
cushmanwakefield.com