

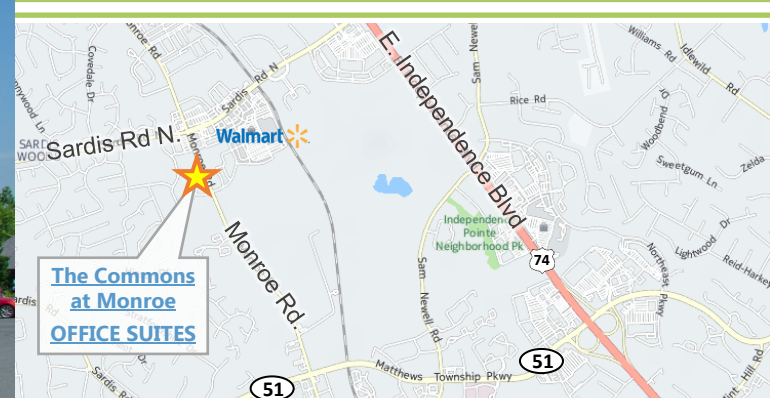


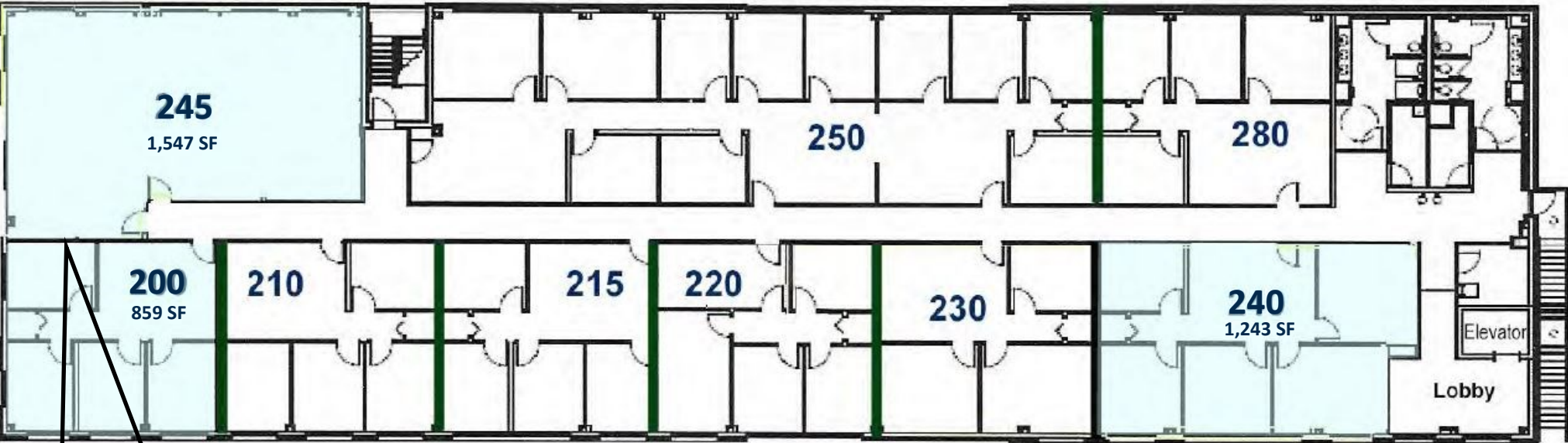
COMMONS AT MONROE - OFFICE

10020 MONROE RD. • CHARLOTTE, NC

849 SF - 2,406 SF AVAILABLE

- ◆ SECOND FLOOR PROFESSIONAL OFFICE SUITES
- ◆ ON-BUILDING SIGNAGE OPPORTUNITIES FOR OFFICE TENANTS
- ◆ BRIGHT, AIRY SUITES FEATURE RECEPTION AREA & PRIVATE OFFICES/CONFERENCE ROOMS
- ◆ 24/7 ACCESS WITH AFTER HOURS & WEEKEND SECURITY CODE ACCESS
- ◆ EASY ACCESS TO THE PROPERTY VIA SIGNALIZED INTERSECTION AT THE CORNER OF MONROE RD. & GALLERIA BLVD.
- ◆ CONVENIENT LOCATION ON THE UPTOWN TO MATTHEWS ROUTE, EXCELLENT PROXIMITY TO HWY 74, SHOPPING, BANKS, RESTAURANTS & MORE





2nd Floor, facing Monroe Road

COMBINE SUITES 200 & 245 FOR A TOTAL OF 2,406 RSF

OFFICE TENANT LIST

SUITE 200	AVAILABLE	859 SF
SUITE 210	BEST BUDDIES INTERNATIONAL	1,077 SF
SUITE 215	BRIGHTWAY INSURANCE	888 SF
SUITE 220	THE TURNER LAW FIRM	796 SF
SUITE 230	MATSON NAVIGATION	889 SF
SUITE 240	AVAILABLE	1,243 SF
SUITE 245	AVAILABLE	1,547 SF
SUITE 250	REYES AGENCIES	2,721 SF
SUITE 280	ELIAS LAW FIRM	951 SF





2nd Floor Elevator Lobby

