

AVAILABLE

FULL 2nd FLOOR

29,136 RSF

LEASED

3,559 RSF
OFFICE AVAILABLE

1,466 RSF / 2,491 RSF / 2,805 RSF
OFFICES AVAILABLE

1,727 - 14,568 RSF
FULL FLOOR AVAILABLE

1,111 RSF / 8,054 RSF
OFFICES AVAILABLE

Northway West Building OFFICE SPACE FOR LEASE

10700 Meridian Ave N, Seattle, WA, 98133

ERNIE VELTON
erniev@jshproperties.com
425.283.5471

REESE VELTON
reesev@jshproperties.com
425.283.5484

 **JSH | PROPERTIES, INC.**

7325 166TH AVE NE, SUITE F260, REDMOND, WA 98052
425.455.0500 | WWW.JSHPROPERTIES.COM

PROPERTY

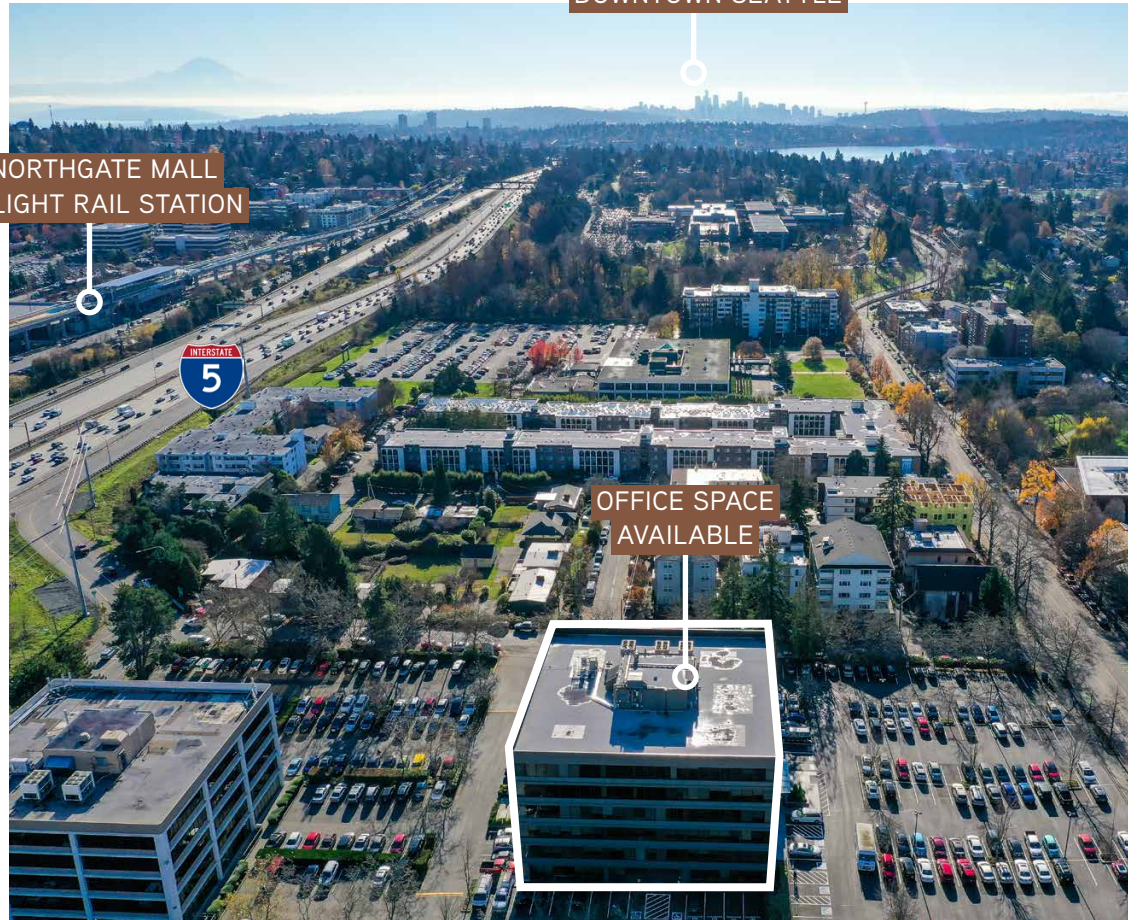
**10700 MERIDIAN AVE N
SEATTLE, WA, 98133**

- ⊙ Sweeping mountain and Puget Sound views
- ⊙ Class A office building with easy access to I-5.
- ⊙ Within a few blocks of the new Northgate Pedestrian/Bike Bridge over Interstate 5 (I-5) will open 2021 to allow easy walking access to Northgate mall, restaurants, and the light rail station (see map on next page)
- ⊙ Ample parking
- ⊙ Walk score (72) very walkable

Pedestrian & Bike Bridge (2021)



NORTHGATE MALL
& LIGHT RAIL STATION



DOWNTOWN SEATTLE



THE INFORMATION CONTAINED HEREIN HAS BEEN GIVEN TO US BY THE OWNER OF THE PROPERTY OR OTHER SOURCES WE DEEM RELIABLE. WE HAVE NO REASON TO DOUBT ITS ACCURACY, BUT WE DO NOT GUARANTEE IT. ALL INFORMATION SHOULD BE VERIFIED PRIOR TO PURCHASE OR LEASE.

ERNIE VELTON
erniev@jshproperties.com
425.283.5471

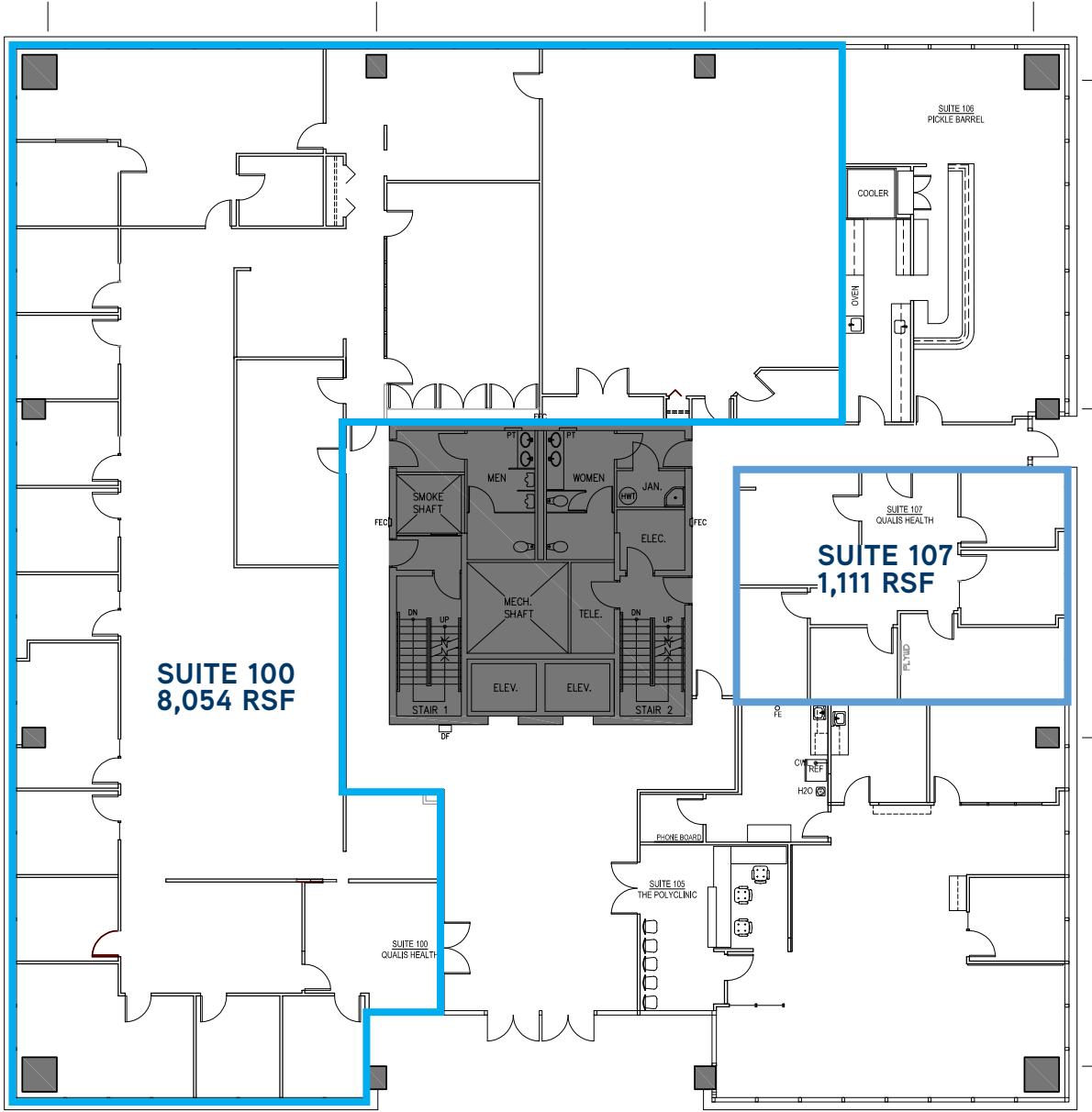
REESE VELTON
reesev@jshproperties.com
425.283.5484

 **JSH | PROPERTIES, INC.**

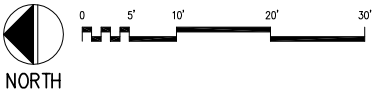
7325 166TH AVE NE, SUITE F260, REDMOND, WA 98052
425.455.0500 | WWW.JSHPROPERTIES.COM

NORTHWAY WEST | 1st Floor

| 1ST FLOOR | RSF | GROSS RENT |
|-----------|-------|--------------------|
| SUITE 100 | 8,054 | \$39.00/sf (Gross) |
| SUITE 107 | 1,111 | \$39.00/sf (Gross) |



1 FIRST FLOOR PLAN
1/16" = 1'-0"



THE INFORMATION CONTAINED HEREIN HAS BEEN GIVEN TO US BY THE OWNER OF THE PROPERTY OR OTHER SOURCES WE DEEM RELIABLE. WE HAVE NO REASON TO DOUBT ITS ACCURACY, BUT WE DO NOT GUARANTEE IT. ALL INFORMATION SHOULD BE VERIFIED PRIOR TO PURCHASE OR LEASE.

ERNIE VELTON
erniev@jshproperties.com
425.283.5471

REESE VELTON
reesev@jshproperties.com
425.283.5484

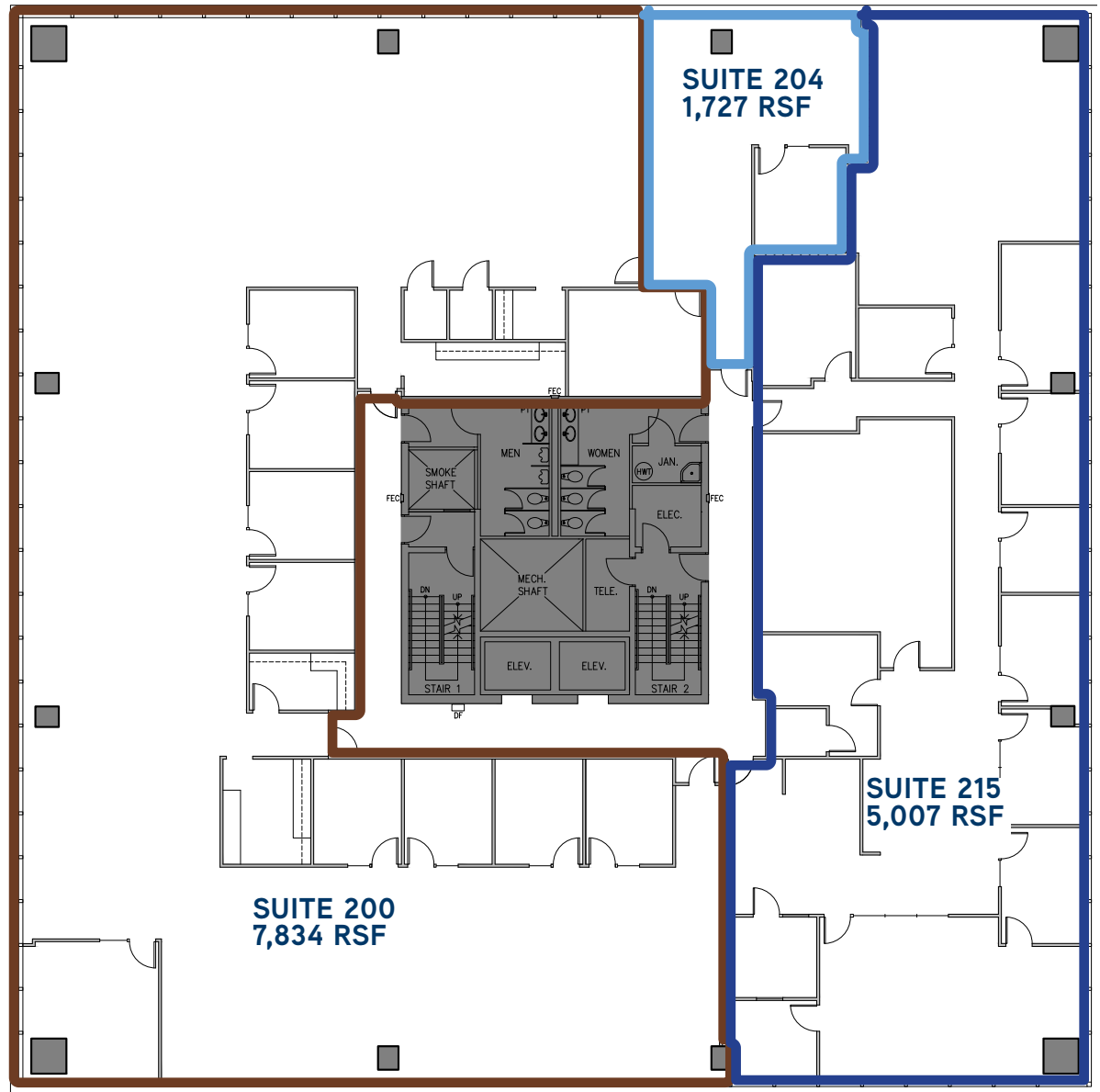
JSH | PROPERTIES, INC.

7325 166TH AVE NE, SUITE F260, REDMOND, WA 98052
425.455.0500 | WWW.JSHPROPERTIES.COM

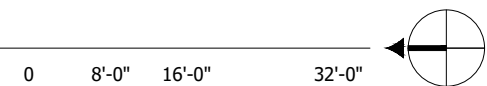
NORTHWAY WEST | 2nd Floor

AVAILABLE
11/1/2020

| 2ND FLOOR | RSF | GROSS RENT |
|------------|--------|--------------------|
| FULL FLOOR | 14,568 | \$39.00/sf (Gross) |
| SUITE 200 | 7,834 | \$39.00/sf (Gross) |
| SUITE 204 | 1,727 | \$39.00/sf (Gross) |
| SUITE 215 | 5,007 | \$39.00/sf (Gross) |



1 SECOND FLOOR PLAN
3/6 Scale: 1/16" = 1'-0"



THE INFORMATION CONTAINED HEREIN HAS BEEN GIVEN TO US BY THE OWNER OF THE PROPERTY OR OTHER SOURCES WE DEEM RELIABLE. WE HAVE NO REASON TO DOUBT ITS ACCURACY, BUT WE DO NOT GUARANTEE IT. ALL INFORMATION SHOULD BE VERIFIED PRIOR TO PURCHASE OR LEASE.

ERNIE VELTON
erniev@jshproperties.com
425.283.5471

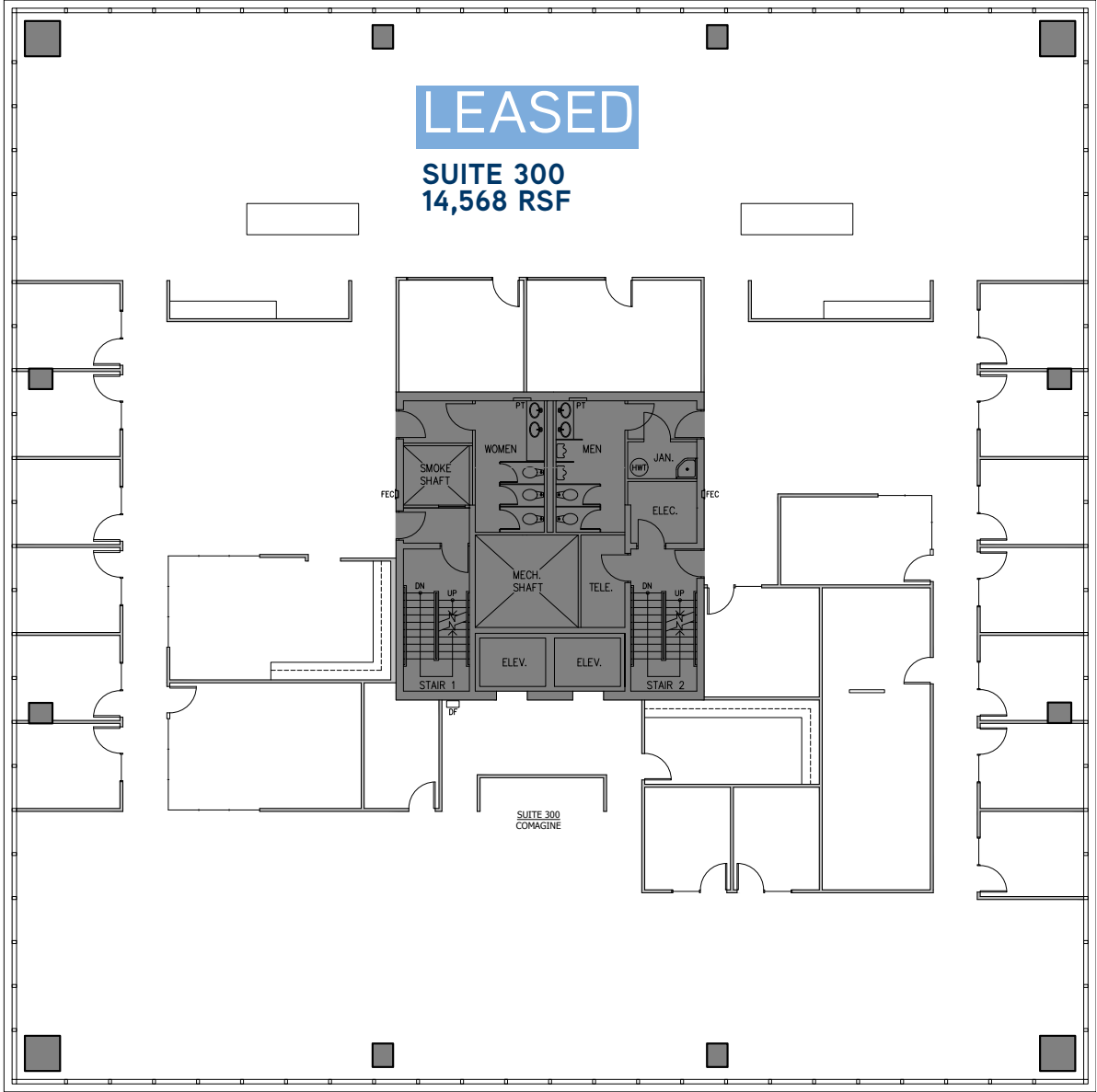
REESE VELTON
reesev@jshproperties.com
425.283.5484

JSH | PROPERTIES, INC.

7325 166TH AVE NE, SUITE F260, REDMOND, WA 98052
425.455.0500 | WWW.JSHPROPERTIES.COM

NORTHWAY WEST | 3rd Floor

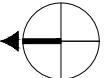
| 3RD FLOOR | RSF | GROSS RENT |
|-----------|--------|--------------------|
| LEASED | 14,568 | \$39.00/sf (Gross) |



1 THIRD FLOOR PLAN
4/6

Scale: 1/16" = 1'-0"

0 8'-0" 16'-0" 32'-0"



THE INFORMATION CONTAINED HEREIN HAS BEEN GIVEN TO US BY THE OWNER OF THE PROPERTY OR OTHER SOURCES WE DEEM RELIABLE. WE HAVE NO REASON TO DOUBT ITS ACCURACY, BUT WE DO NOT GUARANTEE IT. ALL INFORMATION SHOULD BE VERIFIED PRIOR TO PURCHASE OR LEASE.

ERNIE VELTON
erniev@jshproperties.com
425.283.5471

REESE VELTON
reesev@jshproperties.com
425.283.5484

JSH | PROPERTIES, INC.

7325 166TH AVE NE, SUITE F260, REDMOND, WA 98052
425.455.0500 | WWW.JSHPROPERTIES.COM

NORTHWAY WEST | 4th Floor

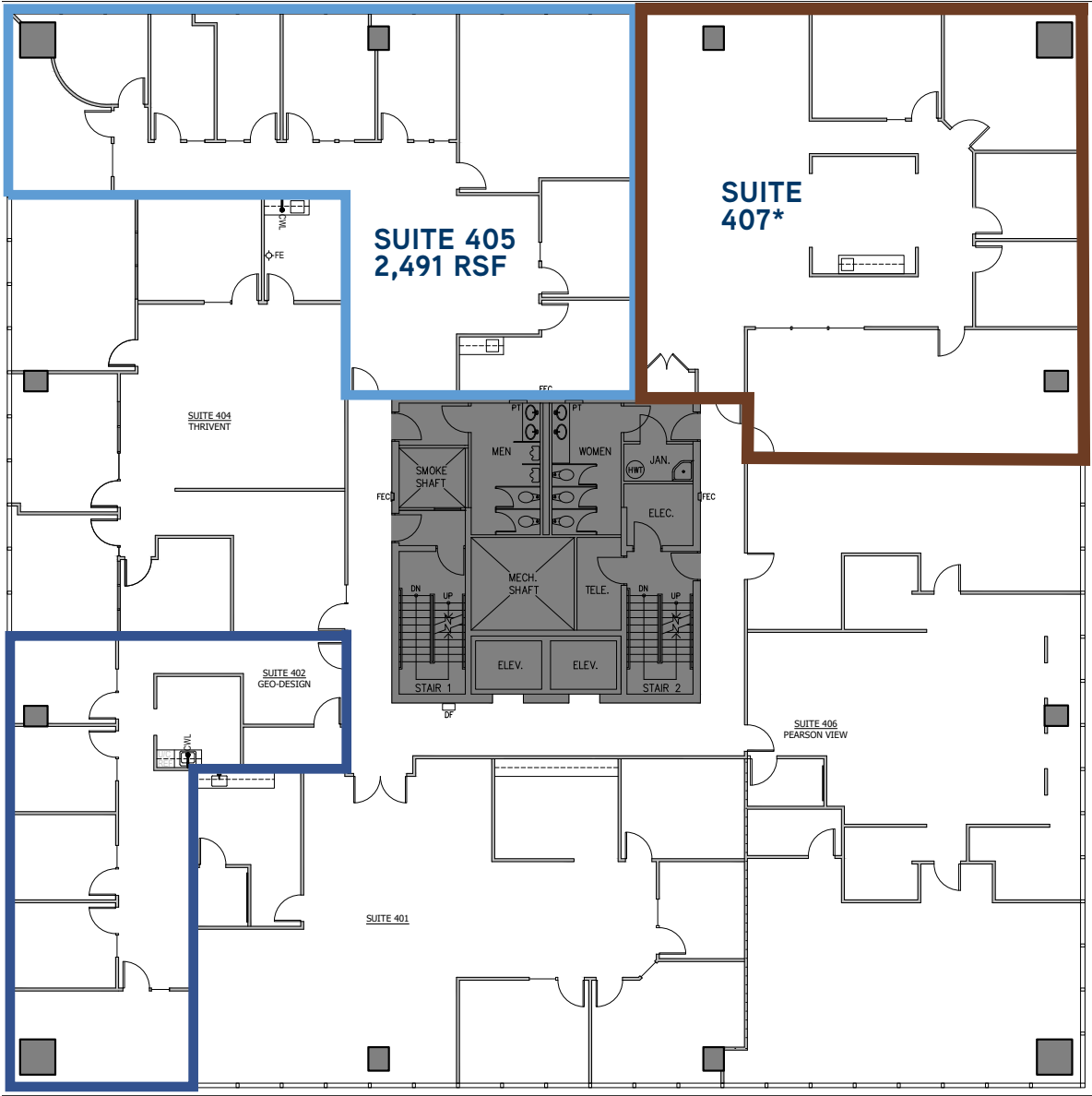
| 4TH FLOOR | RSF | GROSS RENT |
|------------|-------|--------------------|
| SUITE 402 | 1,466 | \$39.00/sf (Gross) |
| SUITE 407* | 3,053 | \$39.00/sf (Gross) |
| SUITE 405 | 2,491 | \$39.00/sf (Gross) |

*AVAILABLE
11/1/2020

SUITE 402
1,466 RSF

SUITE 405
2,491 RSF

SUITE 407*



1 FOURTH FLOOR PLAN
5/6 Scale: 1/16" = 1'-0"



THE INFORMATION CONTAINED HEREIN HAS BEEN GIVEN TO US BY THE OWNER OF THE PROPERTY OR OTHER SOURCES WE DEEM RELIABLE. WE HAVE NO REASON TO DOUBT ITS ACCURACY, BUT WE DO NOT GUARANTEE IT. ALL INFORMATION SHOULD BE VERIFIED PRIOR TO PURCHASE OR LEASE.

ERNIE VELTON
erniev@jshproperties.com
425.283.5471

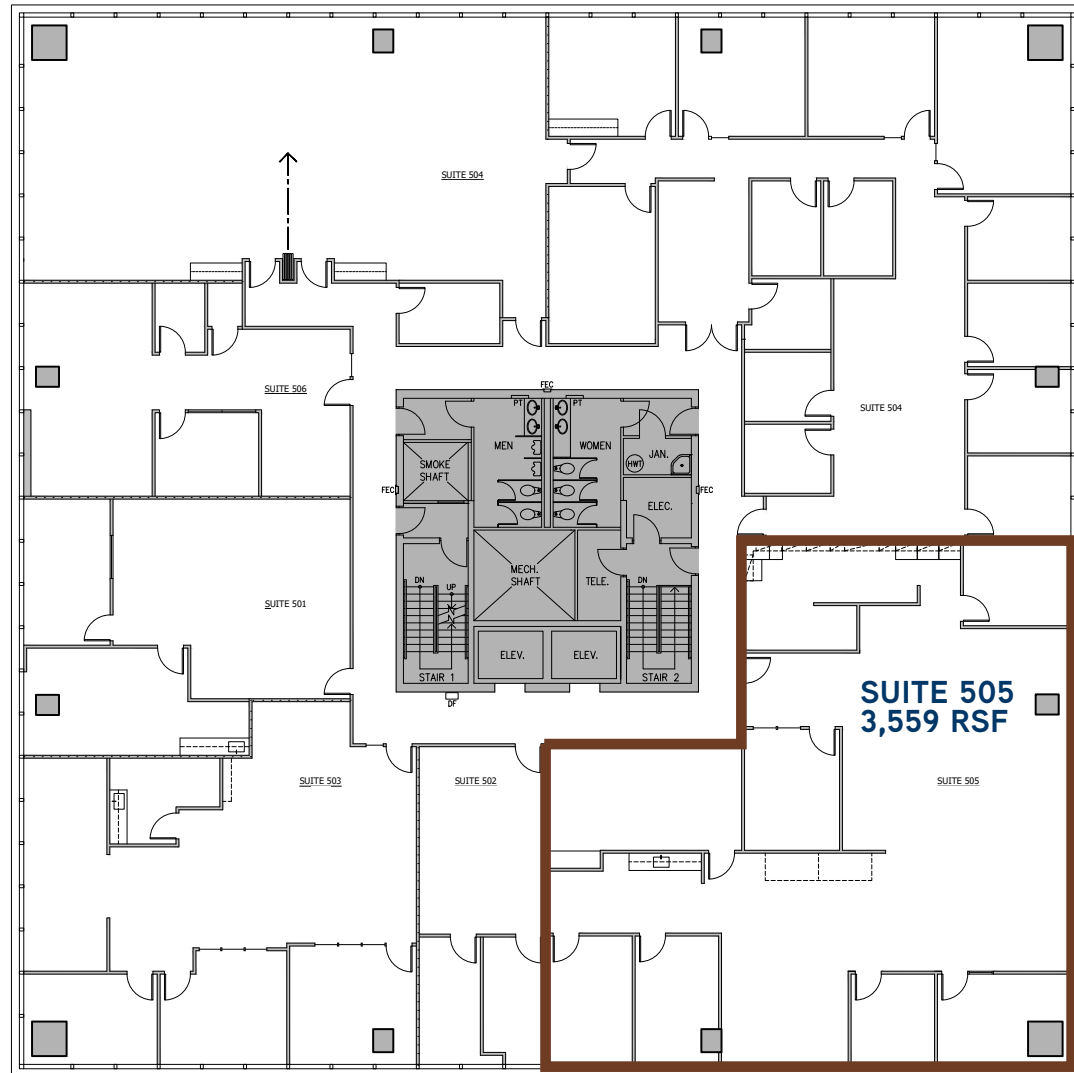
REESE VELTON
reesev@jshproperties.com
425.283.5484

JSH | PROPERTIES, INC.
7325 166TH AVE NE, SUITE F260, REDMOND, WA 98052
425.455.0500 | WWW.JSHPROPERTIES.COM

NORTHWAY WEST | Fifth Floor

AVAILABLE
IMMEDIATELY

| 5TH FLOOR | RSF | GROSS RENT |
|-----------|-------|--------------------|
| SUITE 505 | 3,559 | \$39.00/sf (Gross) |



1 FIFTH FLOOR PLAN
6/6

Scale: 1/16" = 1'-0"

0 8'-0" 16'-0" 32'-0"



SCALE: 1/16" = 1'-0"



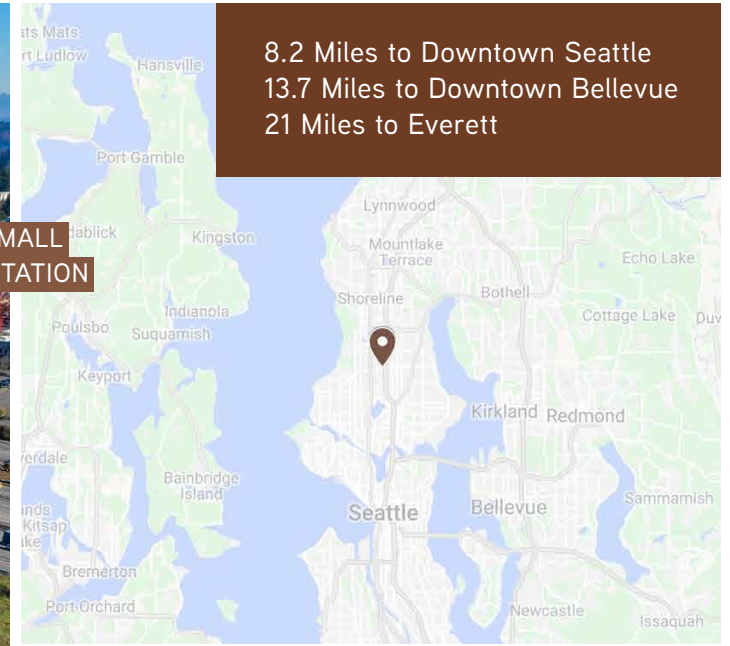
THE INFORMATION CONTAINED HEREIN HAS BEEN GIVEN TO US BY THE OWNER OF THE PROPERTY OR OTHER SOURCES WE DEEM RELIABLE. WE HAVE NO REASON TO DOUBT ITS ACCURACY, BUT WE DO NOT GUARANTEE IT. ALL INFORMATION SHOULD BE VERIFIED PRIOR TO PURCHASE OR LEASE.

ERNIE VELTON
erniev@jshproperties.com
425.283.5471

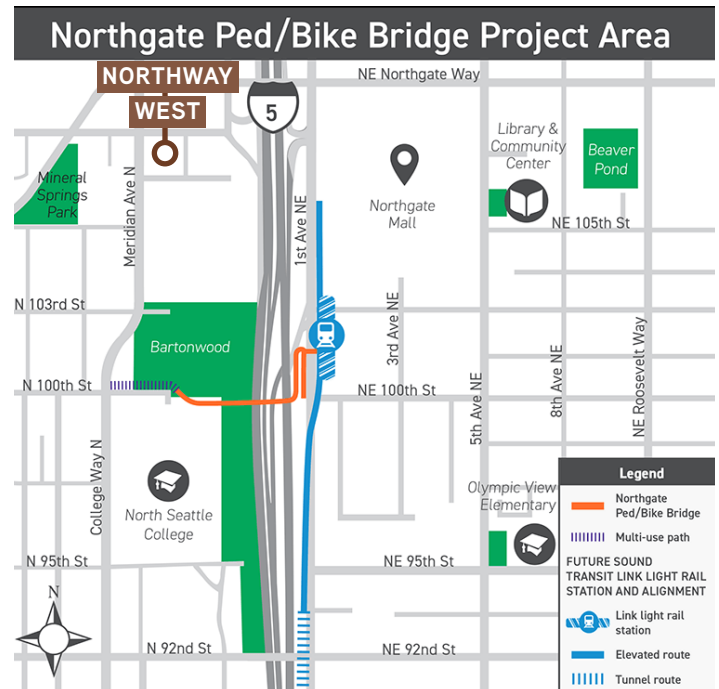
REESE VELTON
reesev@jshproperties.com
425.283.5484

JSH | PROPERTIES, INC.

7325 166TH AVE NE, SUITE F260, REDMOND, WA 98052
425.455.0500 | WWW.JSHPROPERTIES.COM



8.2 Miles to Downtown Seattle
 13.7 Miles to Downtown Bellevue
 21 Miles to Everett



- ⊙ Located near Northgate Mall Redevelopment.
- ⊙ A few blocks north of the new Northgate Pedestrian/Bike Bridge project currently underway (2021) connecting to Northgate Mall.
- ⊙ Adjacent to I-5 freeway for easy access into and out of Northgate.
- ⊙ Link Light Rail Station opening within a few blocks in 2021.
- ⊙ NHL Practice Facility is planned to open at Northgate Mall in 2021 with seating for over 1,000 spectators.
- ⊙ Located within walking distance of UW Medicine - Northwest Hospital and Medical Center

THE INFORMATION CONTAINED HEREIN HAS BEEN GIVEN TO US BY THE OWNER OF THE PROPERTY OR OTHER SOURCES WE DEEM RELIABLE. WE HAVE NO REASON TO DOUBT ITS ACCURACY, BUT WE DO NOT GUARANTEE IT. ALL INFORMATION SHOULD BE VERIFIED PRIOR TO PURCHASE OR LEASE.

ERNIE VELTON
 erniev@jshproperties.com
 425.283.5471

REESE VELTON
 reesev@jshproperties.com
 425.283.5484

JSH PROPERTIES, INC.
 7325 166TH AVE NE, SUITE F260, REDMOND, WA 98052
 425.455.0500 | WWW.JSHPROPERTIES.COM