

109 NORTH 12TH STREET

WILLIAMSBURG, BROOKLYN



OFFICE SPACE
FOR LEASE

WILLIAMSBURG BROOKLYN

109 NORTH 12TH STREET

SPACE HIGHLIGHTS

LOCATION

Between N 13th St and Wythe Ave

SPACE

Space B / 6th Floor / Standard Commercial Use 2,519 SF
Space C / 7th Floor / Community Facility 9,600 SF

CEILING HEIGHT

13 FT

DIMENSIONS

Variable

ZONING

M1-2

OCCUPANCY

Immediate

ASKING RENT

Upon Request

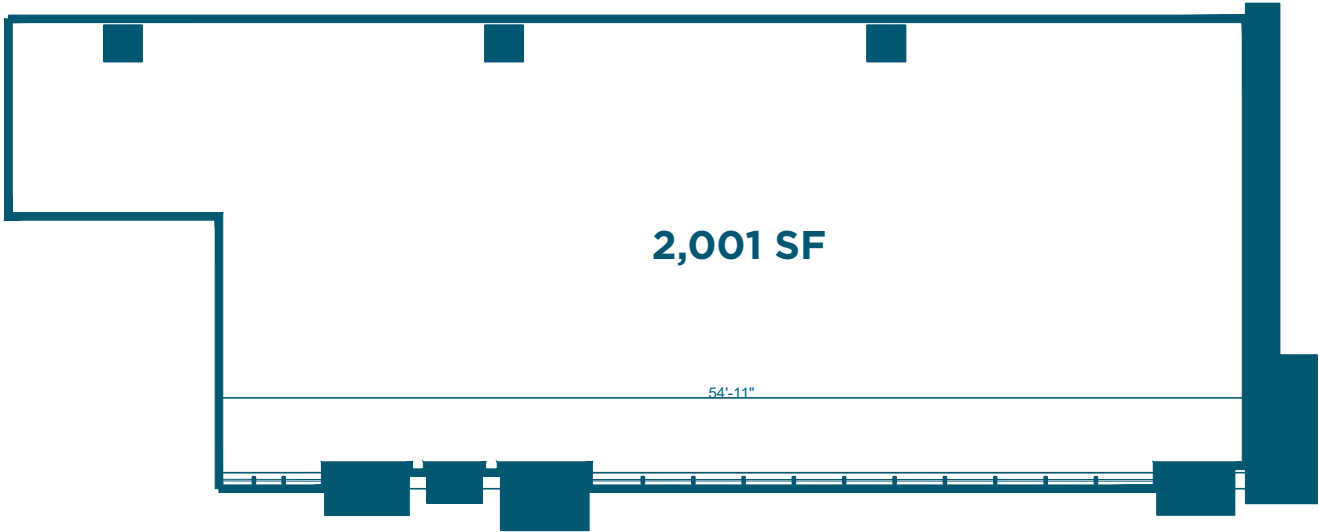
HIGHLIGHTS

- Premiere North Williamsburg Office Space
- New Development
- Floor to ceiling windows
- Within The William Vale complex
- On-Site Parking
- Elevator
- Security System



FLOORPLANS & DETAILS

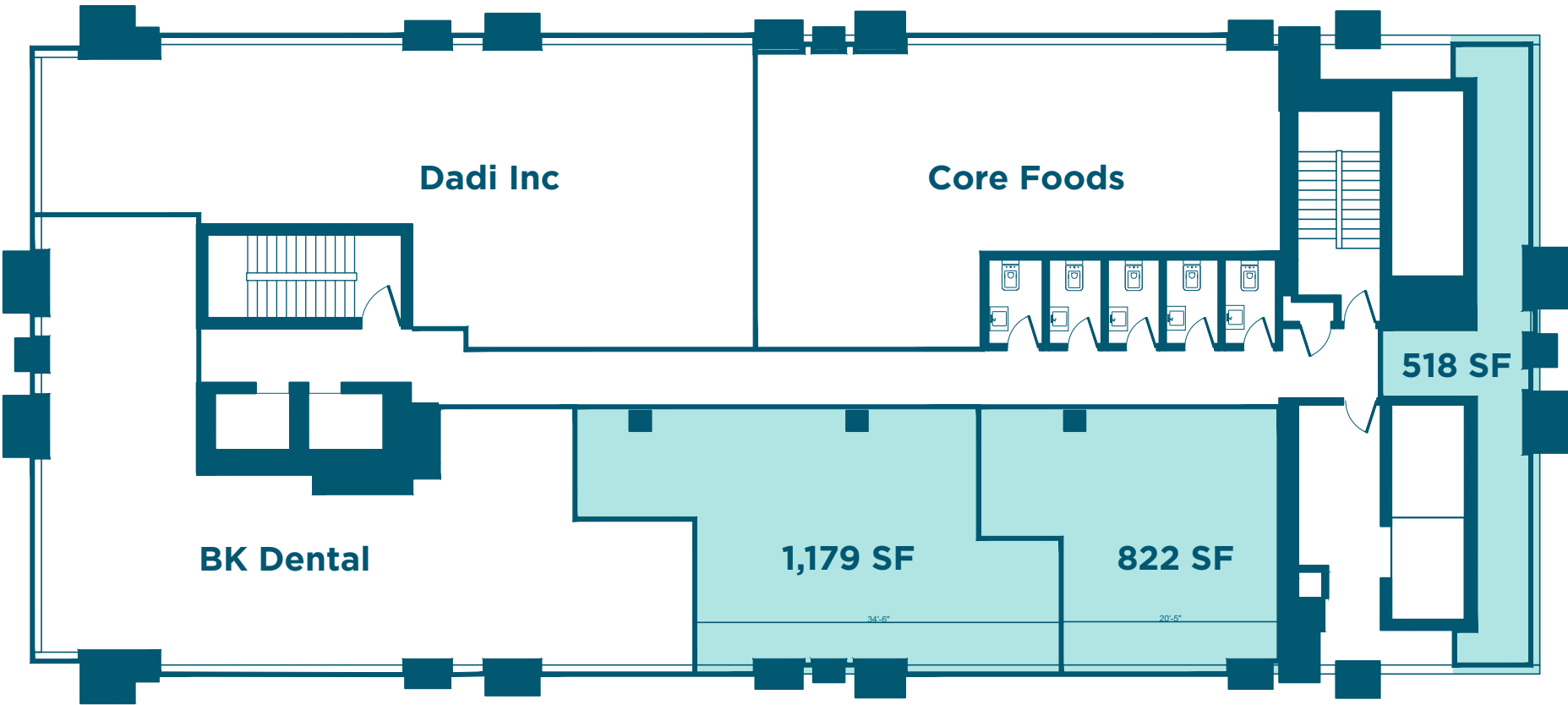
SPACE B
6TH FLOOR
STANDARD COMMERCIAL USE



FLOORPLANS & DETAILS

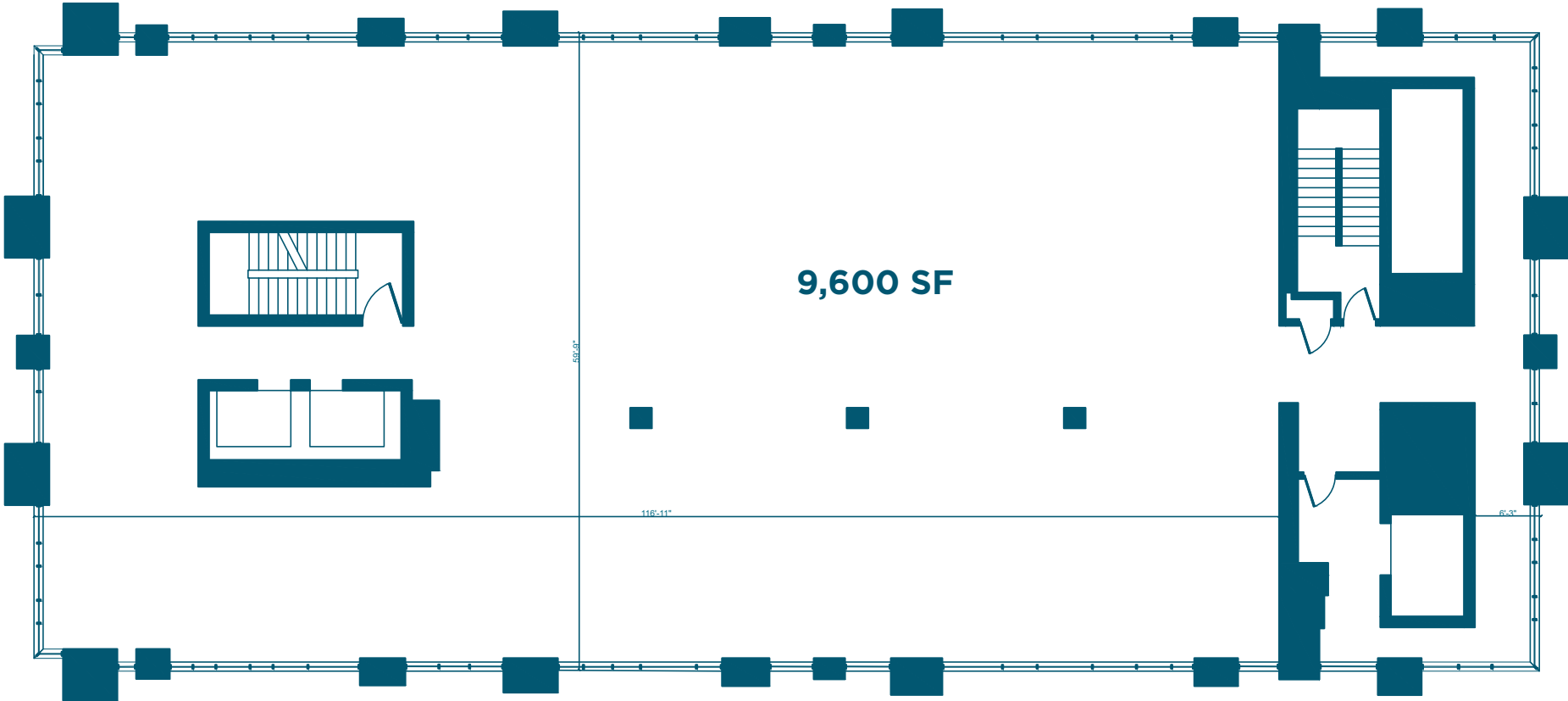
SPACE B

6TH FLOOR
STANDARD COMMERCIAL USE



FLOORPLANS & DETAILS

SPACE C
7TH FLOOR
COMMUNITY FACILITY



WILLIAMSBURG BROOKLYN

EXISTING CONDITION

109 NORTH 12TH STREET

SPACE B / 6TH FLOOR

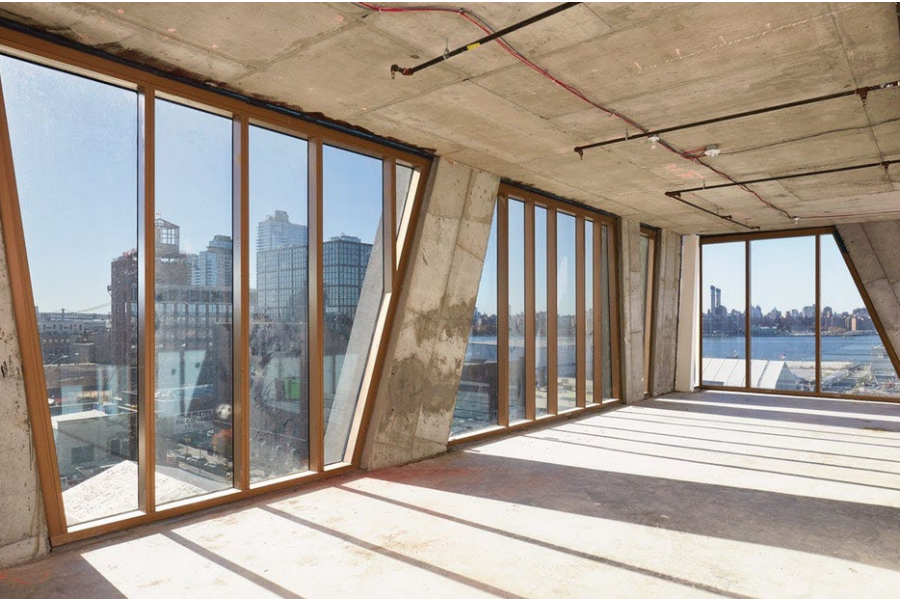
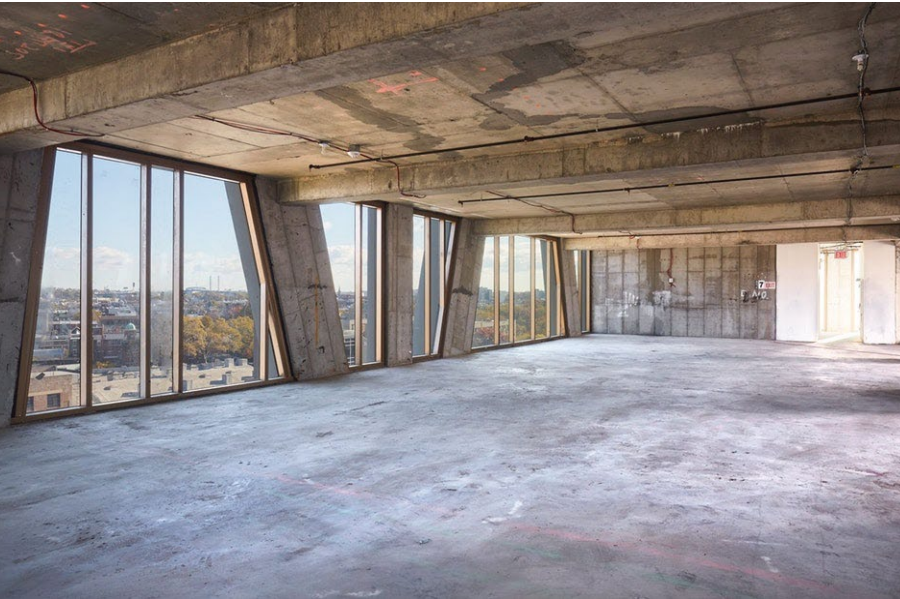


WILLIAMSBURG BROOKLYN

EXISTING CONDITION

109 NORTH 12TH STREET

SPACE C / 7TH FLOOR



WILLIAMSBURG BROOKLYN

109 NORTH 12TH STREET

NEIGHBORHOOD DEMOGRAPHICS



121,583

POPULATION
WITHIN 1-MILE
RADIUS



35.50 Yrs

AVERAGE
POPULATION
AGE



33.12%

POPULATION
GROWTH
SINCE 2010



\$87,483

AVERAGE HHI
WITHIN 1-MILE
RADIUS



4,069

TOTAL BUSINESSES
WITHIN 1-MILE
RADIUS



\$1.4 bn

ANNUAL SPENDING
WITHIN 1-MILE
RADIUS

WILLIAMSBURG BROOKLYN

109 NORTH 12TH STREET

NEIGHBORHOOD & TRANSPORTATION

NEIGHBORHOOD TENANTS

Leuca
The William Vale
Westlight
All-Wise Meadery
Brooklyn Brewery
The Whiskey Brooklyn
The Counting Room
McCarren Hotel & Pool
The Bar Method
North 11th Shoe Repair
Tacos Cholula
The Williamsburg Hotel
Kinfolk 94
Kinfolk 90
29 Rooms
Brooklyn Athletic Club
Berry Park
The Gutter
The Boiler | Pierogi
Upcycles Brooklyn
Brooklyn Flea
Wythe Hotel
Colossal Media
Schimanski
Kent Ale House
Works Engineering
Dish Food & Events

TRANSPORTATION

- 9 Min Walk at Nassau Avenue (0.4 mi)
- 11 Min Walk at Bedford Avenue (0.5 mi)
- 16 Min Walk at Greenpoint Avenue (0.8 mi)
- 17 Min Walk at Metropolitan Avenue (0.8 mi)
- 18 Min Walk at Lorimer Street (0.9 mi)



WILLIAMSBURG BROOKLYN

109 NORTH 12TH STREET

CONTACT



BRAD KROSSER
862-368-7271
BKROSSER@EXRNY.COM

ALAN CHABBOTT
516-776-0363
AC@EXRNY.COM

