



FOR LEASE
Under New
Ownership

CENTER POINTE AT LAGUNA

Move-In Ready & Customizable
Professional Office Spaces in
Elk Grove, CA



Tyler Boyd
916.751.3625
tyler.boyd@kidder.com
LIC # 001927167

Kevin Sheehan
916.751.3601
kevin.sheehan@kidder.com
LIC #00936093

kiddermathews.com



CENTER POINTE

AT LAGUNA

2230-2236 Longport Court, Elk Grove, CA

FOR LEASE

	ADDRESS	SUITE	SF	Condition	Lease Rate
1	2234 Longport Court	Suite 130	±2,418	Move-In Ready	\$1.95 MG
2	2234 Longport Court	Suite 100	±5,099	Shell	\$1.95 MG
3	2236 Longport Court	Suite 110	±5,474	Shell	\$1.95 MG



Tyler Boyd
916.751.3625
tyler.boyd@kidder.com
LIC # 001927167

Kevin Sheehan
916.751.3601
kevin.sheehan@kidder.com
LIC #00936093

kiddermathews.com



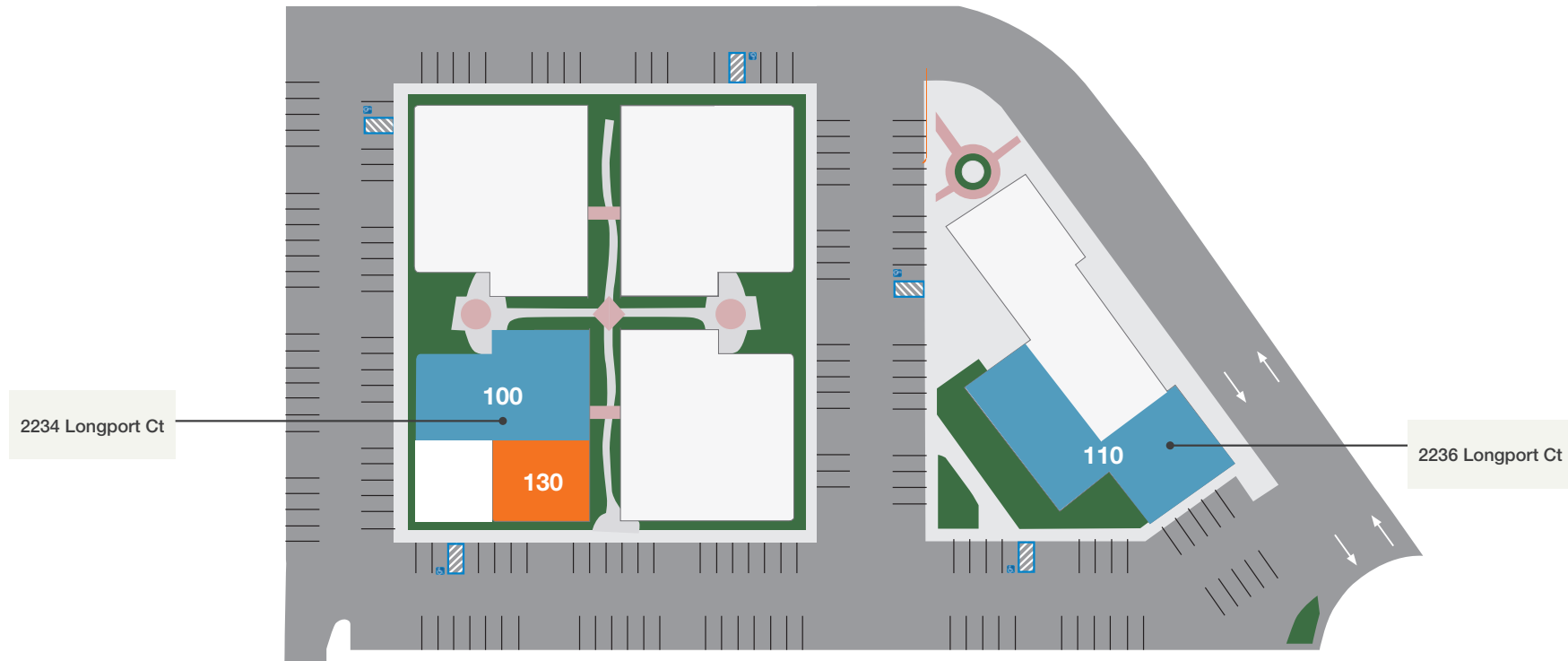
This information supplied herein is from sources we deem reliable. It is provided without any representation, warranty or guarantee, expressed or implied as to its accuracy. Prospective Buyer or Tenant should conduct an independent investigation and verification of all matters deemed to be material, including, but not limited to, statements of income and expenses. Consult your attorney, accountant, or other professional advisor.

CENTER POINTE

AT LAGUNA

2230-2236 Longport Court, Elk Grove, CA

Site Plan



-  Move-In Ready
-  Shell Condition

Tyler Boyd
916.751.3625
tyler.boyd@kidder.com
LIC # 001927167

Kevin Sheehan
916.751.3601
kevin.sheehan@kidder.com
LIC #00936093

kiddermathews.com

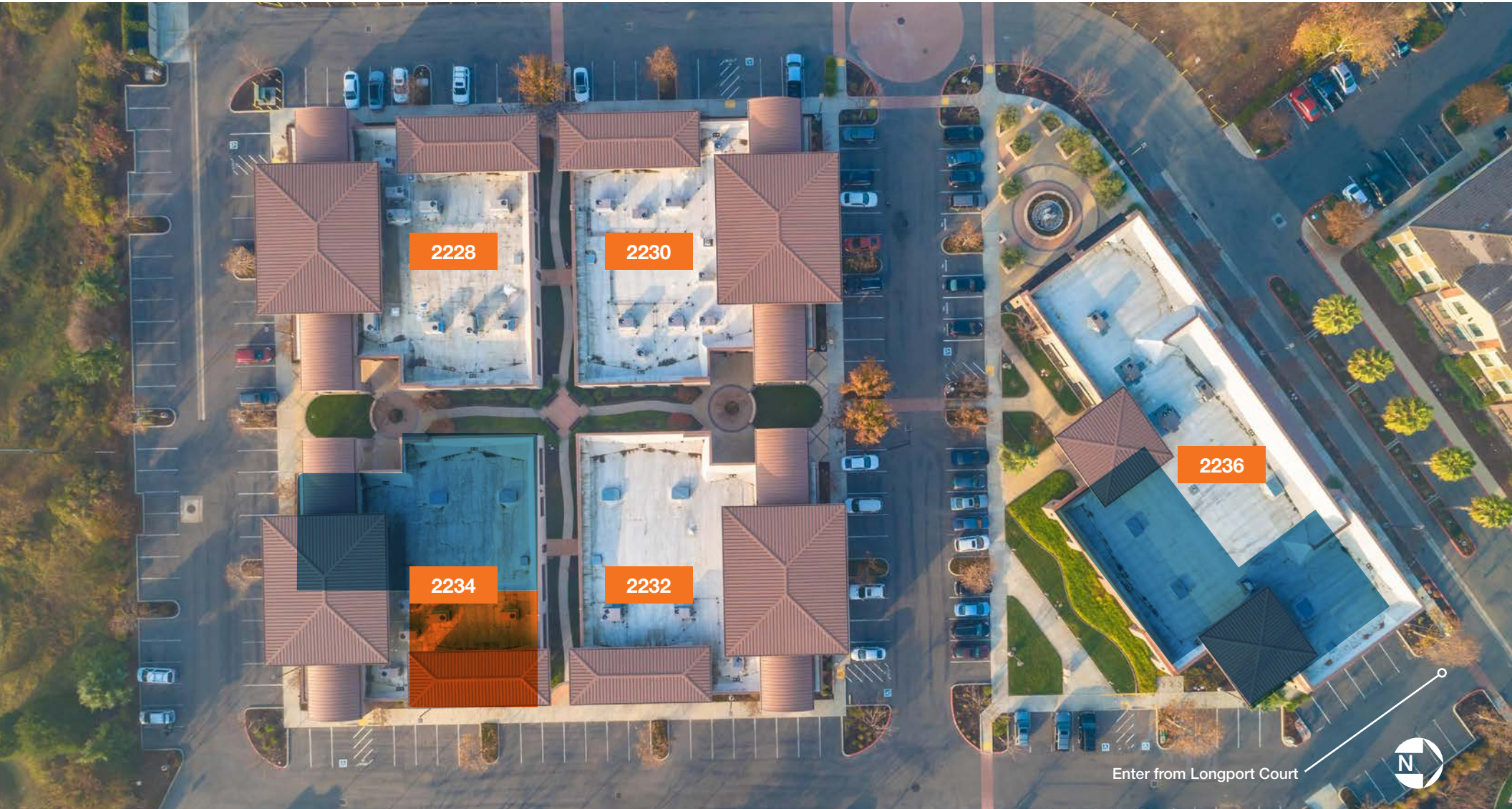


This information supplied herein is from sources we deem reliable. It is provided without any representation, warranty or guarantee, expressed or implied as to its accuracy. Prospective Buyer or Tenant should conduct an independent investigation and verification of all matters deemed to be material, including, but not limited to, statements of income and expenses. Consult your attorney, accountant, or other professional advisor.

CENTER POINTE

AT LAGUNA

2230-2236 Longport Court, Elk Grove, CA



Tyler Boyd
916.751.3625
tyler.boyd@kidder.com
LIC # 001927167

Kevin Sheehan
916.751.3601
kevin.sheehan@kidder.com
LIC #00936093

kiddermathews.com

km Kidder Mathews

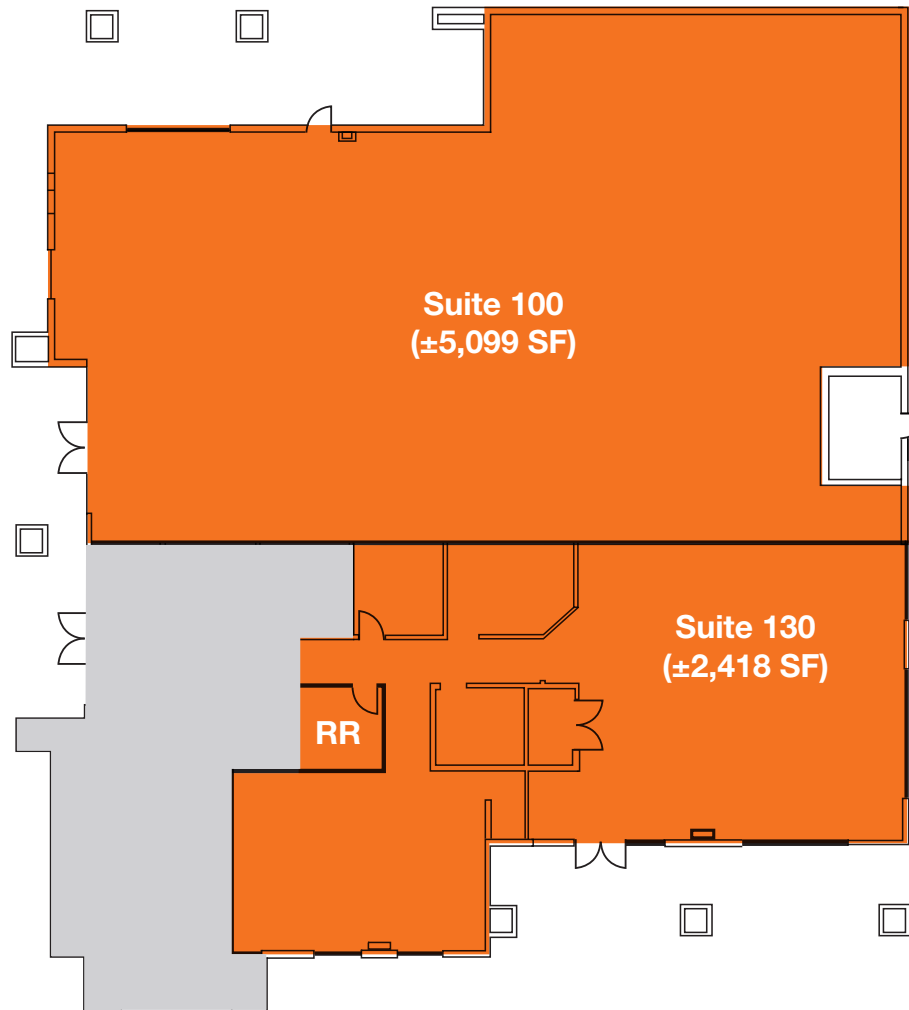
This information supplied herein is from sources we deem reliable. It is provided without any representation, warranty or guarantee, expressed or implied as to its accuracy. Prospective Buyer or Tenant should conduct an independent investigation and verification of all matters deemed to be material, including, but not limited to, statements of income and expenses. Consult your attorney, accountant, or other professional advisor.

CENTER POINTE

AT LAGUNA

2230-2236 Longport Court, Elk Grove, CA

Floor Plan - 2234 Longport Ct



Tyler Boyd
916.751.3625
tyler.boyd@kidder.com
LIC # 001927167

Kevin Sheehan
916.751.3601
kevin.sheehan@kidder.com
LIC #00936093

kiddermathews.com



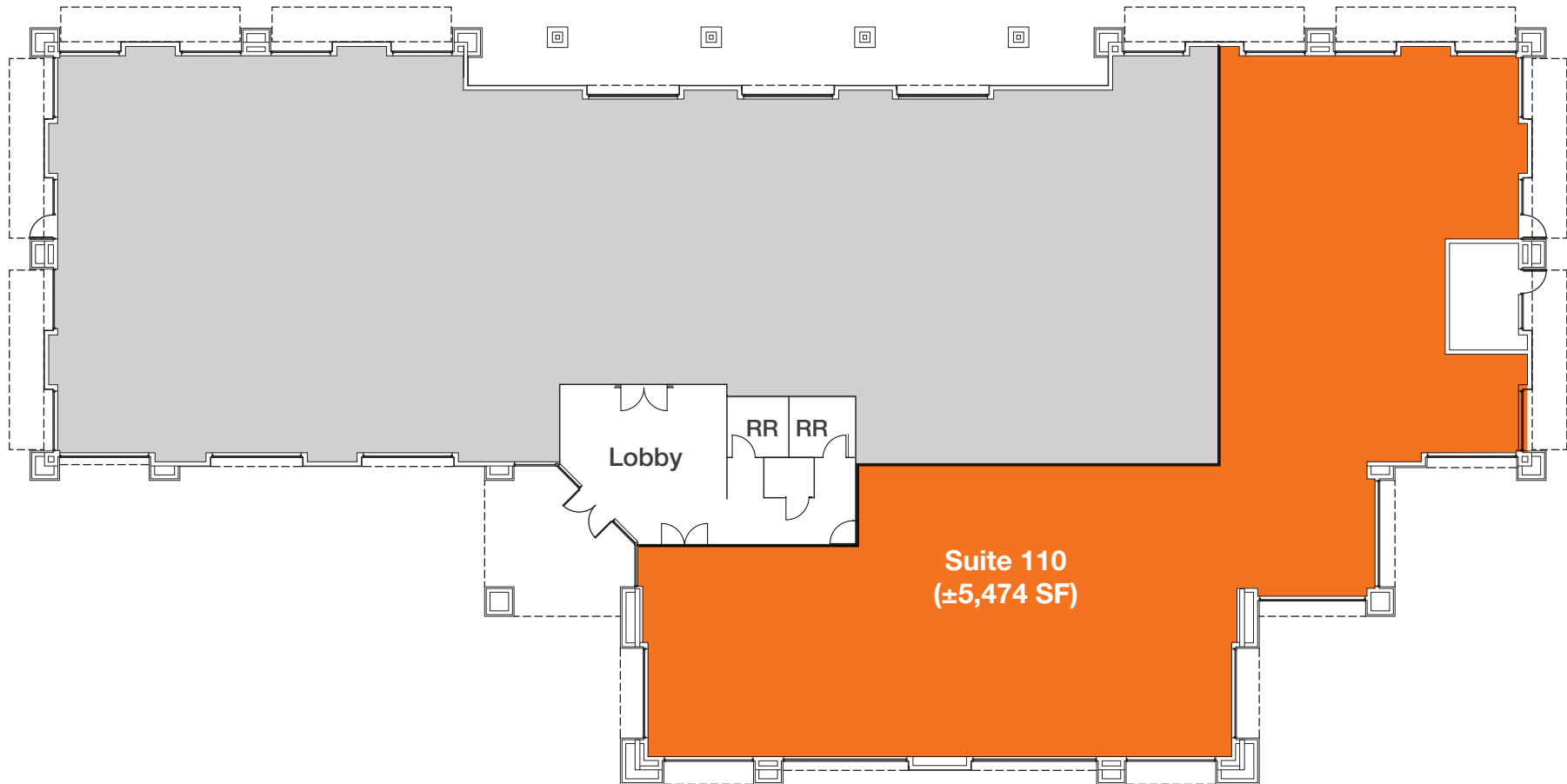
This information supplied herein is from sources we deem reliable. It is provided without any representation, warranty or guarantee, expressed or implied as to its accuracy. Prospective Buyer or Tenant should conduct an independent investigation and verification of all matters deemed to be material, including, but not limited to, statements of income and expenses. Consult your attorney, accountant, or other professional advisor.

CENTER POINTE

AT LAGUNA

2230-2236 Longport Court, Elk Grove, CA

Floor Plan - 2236 Longport Ct



Tyler Boyd
916.751.3625
tyler.boyd@kidder.com
LIC # 001927167

Kevin Sheehan
916.751.3601
kevin.sheehan@kidder.com
LIC #00936093

kiddermathews.com



This information supplied herein is from sources we deem reliable. It is provided without any representation, warranty or guarantee, expressed or implied as to its accuracy. Prospective Buyer or Tenant should conduct an independent investigation and verification of all matters deemed to be material, including, but not limited to, statements of income and expenses. Consult your attorney, accountant, or other professional advisor.

CENTER POINTE

AT LAGUNA

2230-2236 Longport Court, Elk Grove, CA

Features

Office/Medical/Retail space for lease

Move-In suites available for immediate occupancy

Customizable shell units available with Tenant Improvement Allowance offered

Built in 2007 on ±4.6 acres

General Commercial (GC) zoning allows office, medical, recreation/fitness, assembly, educational, retail, and many other uses

Parking ratio of 4.0 per 1,000 SF

Immediate access to I-5 and Laguna Blvd

±6.3 AC I-5 Freeway Frontage Land also available

Under new ownership and property management!



Tyler Boyd
916.751.3625
tyler.boyd@kidder.com
LIC # 001927167

Kevin Sheehan
916.751.3601
kevin.sheehan@kidder.com
LIC #00936093

kiddermathews.com



This information supplied herein is from sources we deem reliable. It is provided without any representation, warranty or guarantee, expressed or implied as to its accuracy. Prospective Buyer or Tenant should conduct an independent investigation and verification of all matters deemed to be material, including, but not limited to, statements of income and expenses. Consult your attorney, accountant, or other professional advisor.

CENTER POINTE

AT LAGUNA

2230-2236 Longport Court, Elk Grove, CA

Amenities



Tyler Boyd
916.751.3625
tyler.boyd@kidder.com
LIC # 001927167

Kevin Sheehan
916.751.3601
kevin.sheehan@kidder.com
LIC #00936093

kiddermathews.com



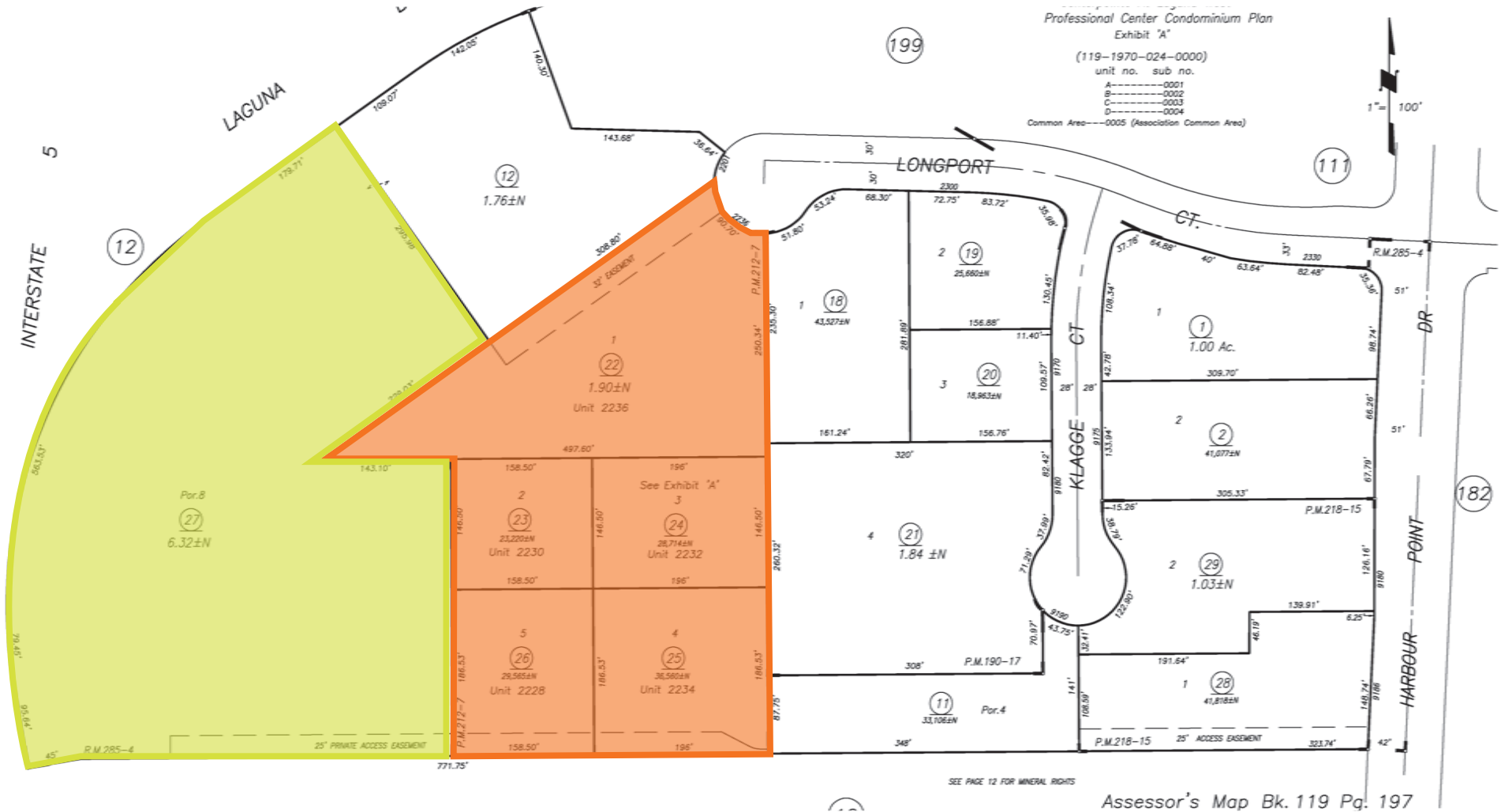
This information supplied herein is from sources we deem reliable. It is provided without any representation, warranty or guarantee, expressed or implied as to its accuracy. Prospective Buyer or Tenant should conduct an independent investigation and verification of all matters deemed to be material, including, but not limited to, statements of income and expenses. Consult your attorney, accountant, or other professional advisor.

CENTER POINTE

AT LAGUNA

2230-2236 Longport Court, Elk Grove, CA

Parcel Map



Tyler Boyd
916.751.3625
tyler.boyd@kidder.com
LIC # 001927167

Kevin Sheehan
916.751.3601
kevin.sheehan@kidder.com
LIC #00936093

kiddermathews.com



This information supplied herein is from sources we deem reliable. It is provided without any representation, warranty or guarantee, expressed or implied as to its accuracy. Prospective Buyer or Tenant should conduct an independent investigation and verification of all matters deemed to be material, including, but not limited to, statements of income and expenses. Consult your attorney, accountant, or other professional advisor.