

FOR SUBLEASE

8001 BAYMEADOWS WAY

JACKSONVILLE, FL 32256



SINGLE STORY OFFICE SPACE AVAILABLE FOR SUBLEASE IN THE HEART OF THE BAYMEADOWS SUBMARKET.

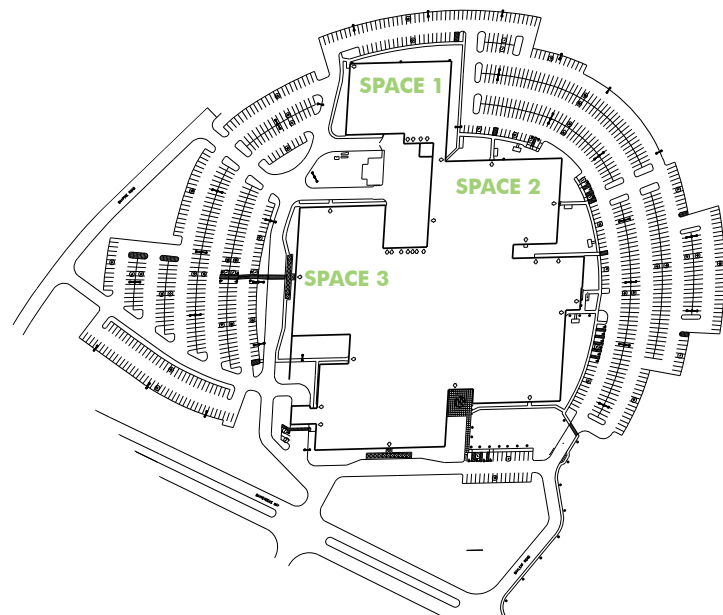


PROPERTY FEATURES

- + Total Building Size: 302,440 SF
- + Parking: 1,100 free surface (3.64/1,000)
- + Easy access to I-95 and Baymeadows Rd.
- + Built in 1976; Renovated in 1989



PARKING OVERVIEW



SUBLEASE FEATURES

- + Available Space: Up to 121,600 SF
- + Master Lease Expires: November 30, 2028
- + Asking Rate: \$20.00 FSG
- + Furniture Available
- + Conference rooms
- + CAT 6 cabling

www.cbre.us/louis.nutter

CBRE

FOR SUBLEASE 8001 BAYMEADOWS WAY



PHOTOS



CAFETERIA



SPACE 1 OVERVIEW



CAFETERIA SEATING



OUTDOOR PATIO



CONFERENCE ROOM



SPACE 3 BREAK ROOM



SPACE 2 ENTRANCE



PARKING



FLOOR PLAN

Entrance

SPACE 1 | 23,600 SF

- Space available
- Furniture to be removed

Entrance

SPACE 2 | 55,300 SF

SPACE 3 | 42,700 SF

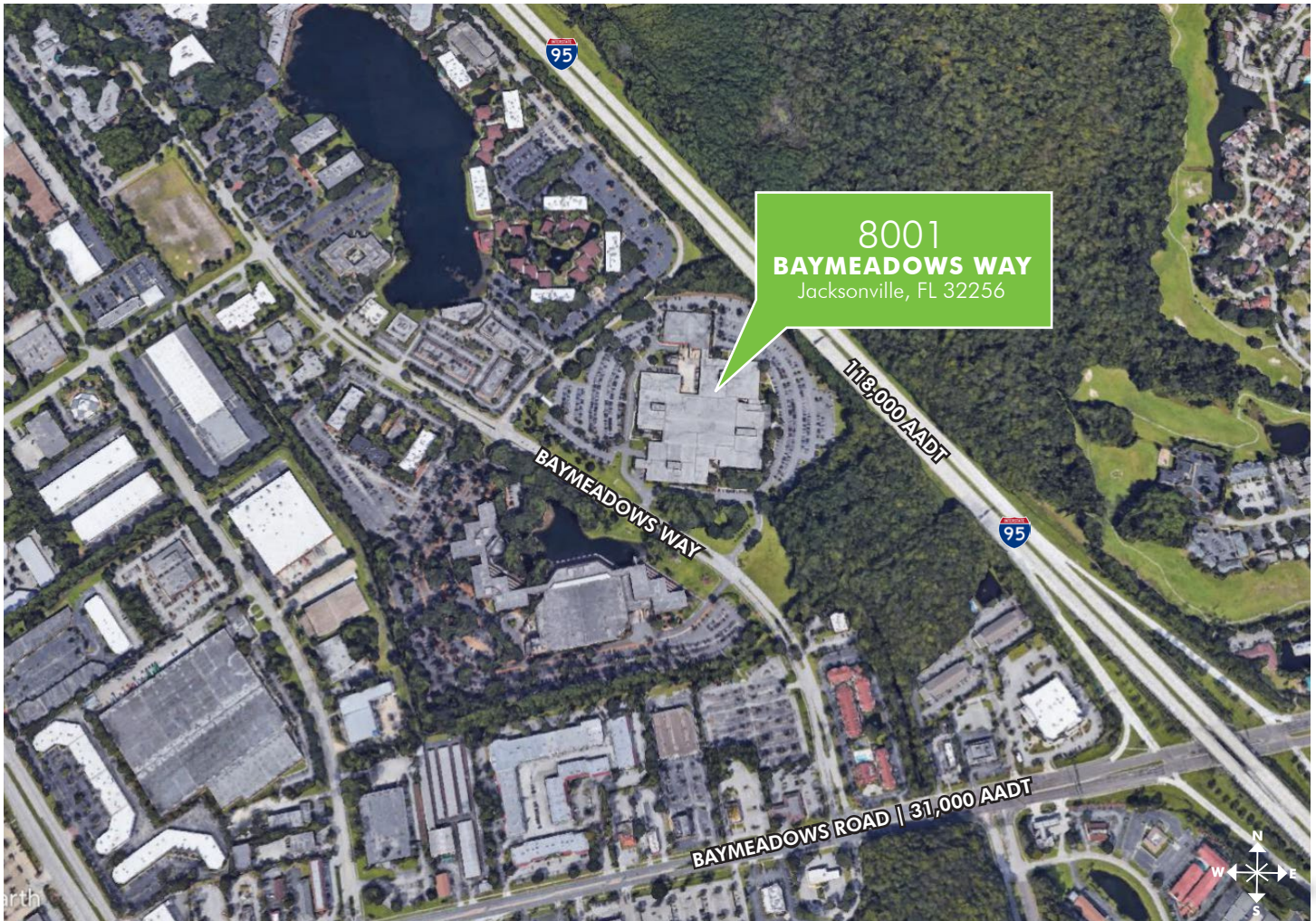
Entrance

Entrance

Cafeteria



FOR SUBLEASE 8001 BAYMEADOWS WAY



CONTACT US

LOU NUTTER

Senior Vice President
+1 904 630 6341
louis.nutter@cbre.com

ELIZABETH PIPPIN

Sales Assistant
+1 904 630 6382
elizabeth.pippin@cbre.com

© 2018 CBRE, Inc. All rights reserved. This information has been obtained from sources believed reliable, but has not been verified for accuracy or completeness. You should conduct a careful, independent investigation of the property and verify all information. Any reliance on this information is solely at your own risk. CBRE and the CBRE logo are service marks of CBRE, Inc. All other marks displayed on this document are the property of their respective owners. Photos herein are the property of their respective owners. Use of these images without the express written consent of the owner is prohibited.

www.cbre.us/louis.nutter

CBRE