

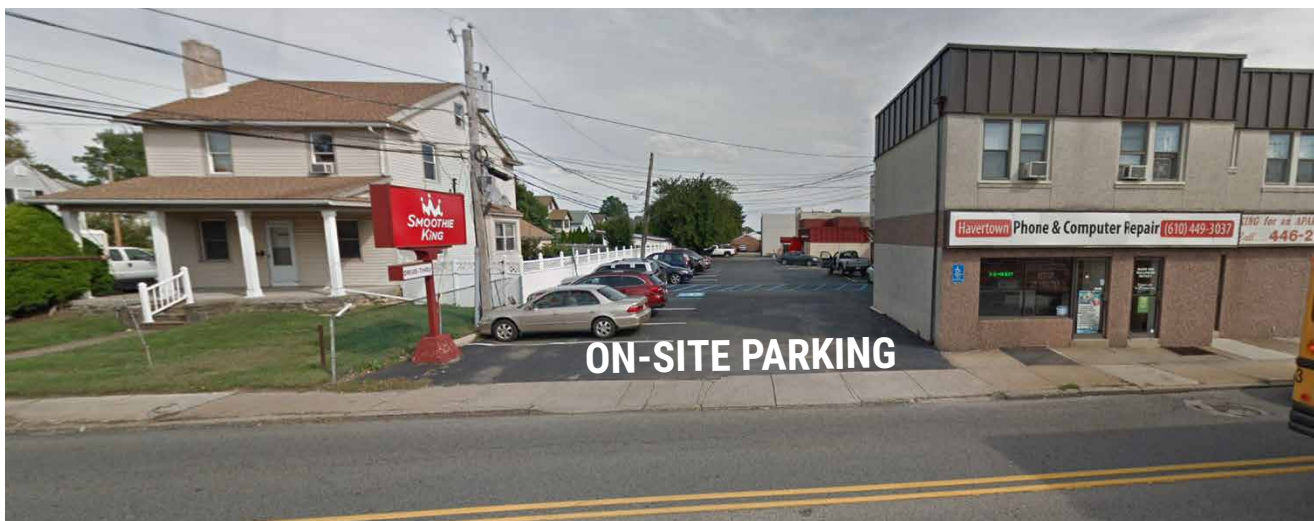
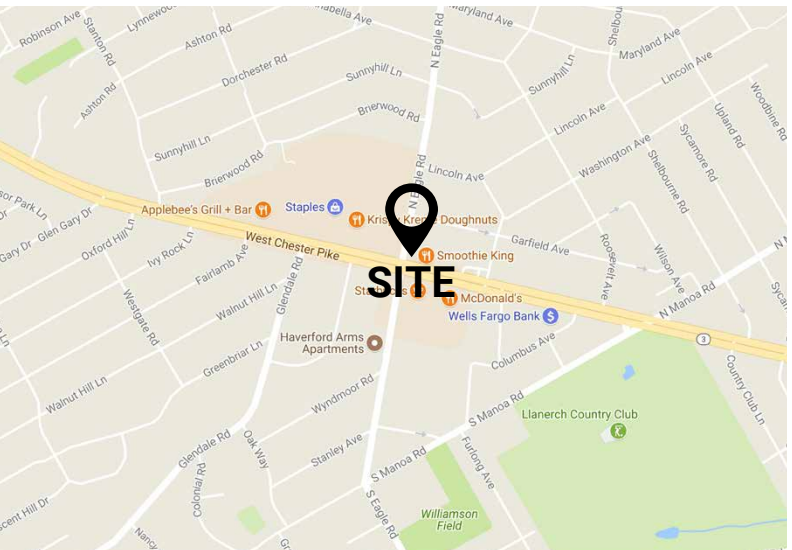
± 800 SF RETAIL / PROFESSIONAL OFFICE

1243 WEST CHESTER PIKE, HAVERTOWN, PA 19083

**AVAILABLE
FOR LEASE**

PROPERTY FEATURES

- ✓ ± 800 SF of Retail or Professional Office
- ✓ Easy access to Route 3 and Eagle Road
- ✓ Excellent Traffic Counts: ± 42,000 VPD
- ✓ Excellent visibility and signage
- ✓ Located at a signalized intersection
- ✓ On-site parking!
- ✓ \$1,950 per month plus electric, includes heat, water and includes powder room and full basement for storage

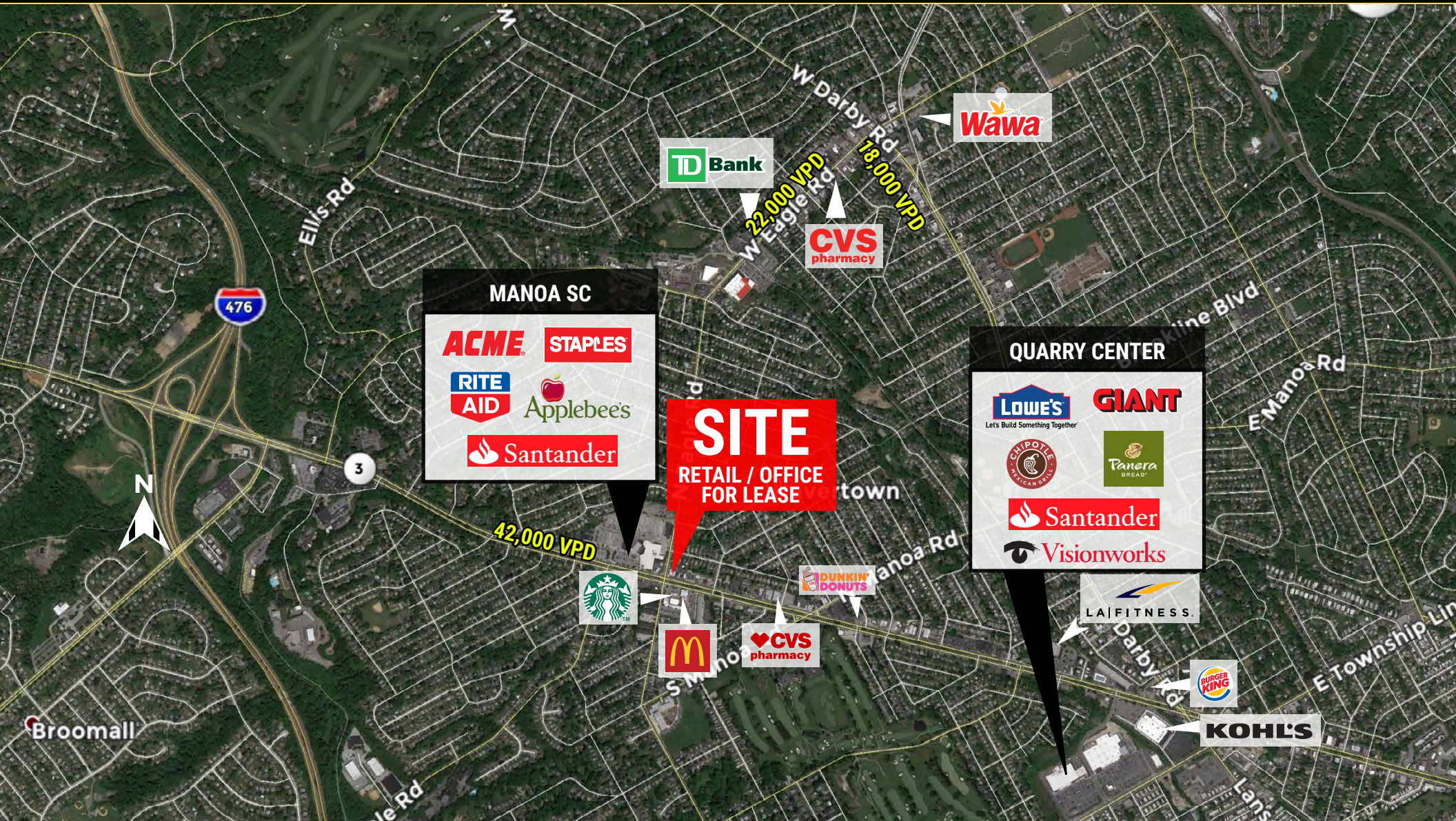


CONTACT US

CAROLYN CLINE
Phone: 610.359.1100
Cell: 610.299.8306
Email: ccline@zmcre.com

1306 Wilmington Pike, Suite A-2
West Chester, PA 19382
610.359.1100
www.zmcre.com

HAVERTOWN LOCATION AERIAL - 1243 WEST CHESTER PIKE



CONTACT US

CAROLYN CLINE
Phone: 610.359.1100
Cell: 610.299.8306
Email: ccline@zmcre.com

1306 Wilmington Pike, Suite A-2
West Chester, PA 19382
610.359.1100
www.zmcre.com

ABOUT ZOMMICK McMAHON COMMERCIAL REAL ESTATE

Zommick McMahon Commercial Real Estate, Inc. has been a Metro Philadelphia Area staple since its inception in 1949. The Company was founded by Joseph Zommick, and continues today with Ryan McMahon and his highly experienced staff, whom are all results-oriented professionals.

SOME OF OUR SATISFIED CLIENTS:



CONTACT US

CAROLYN CLINE
Phone: 610.359.1100
Cell: 610.299.8306
Email: ccline@zmcre.com

1306 Wilmington Pike, Suite A-2
West Chester, PA 19382
610.359.1100
www.zmcre.com