

For Lease

Property Summary

This former Auto Parts store is located on the corner of Willow and Moss, two thoroughfares from I-49 and I-10. The site has excellent access and visibility with ample parking. Retail at the corner of Willow and Moss benefits from new development in upper Lafayette like Stirling Lafayette which is Target anchored and Evangeline court (2 miles north of site) which is Super 1 anchored.

Available

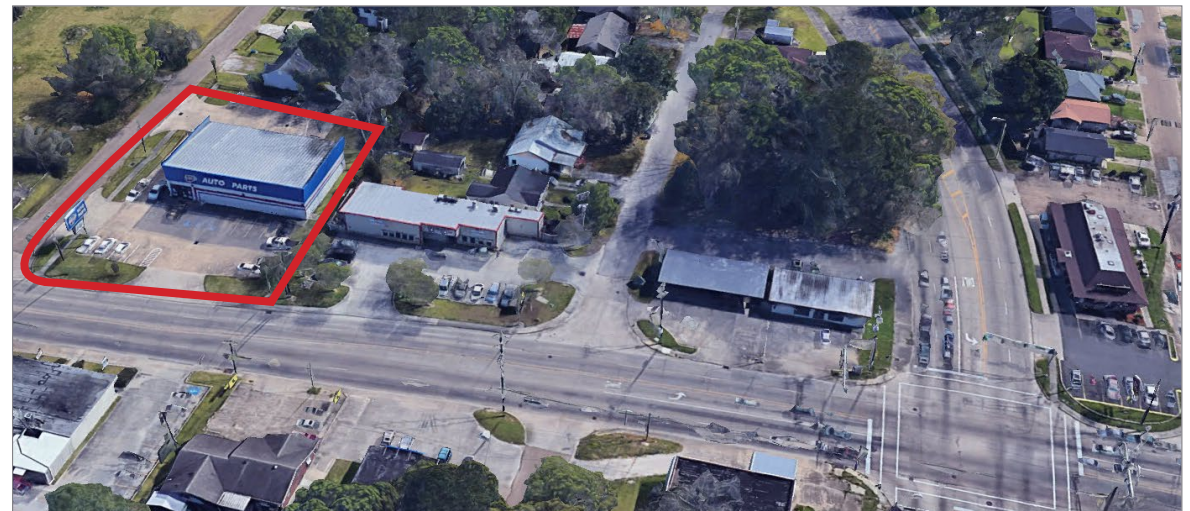
- 5,400 SF

Traffic Counts (ADT 2017)

- Moss Street 18k
- Willow Street 16k
- NW Evangeline Throughway (I-49) 64k
- I-10 74k

2019 Demographics

	1 mi.	3 mi.	5 mi.
Population	9,779	50,395	100,584
Avg. HH Income	\$36,468	\$47,377	\$58,568



Charles Cornay

Office: 337-234-4481
Direct: 337-572-0234
ccornay@stirlingprop.com

Moss Street Retail

1416 Moss Street, Lafayette, LA

