

FOR LEASE

1050 S DOBSON ROAD

CORNER PAD @ DOBSON PECOS VILLAGE
CHANDLER, AZ 85224

AVAILABLE FOR BUILD-TO-SUIT

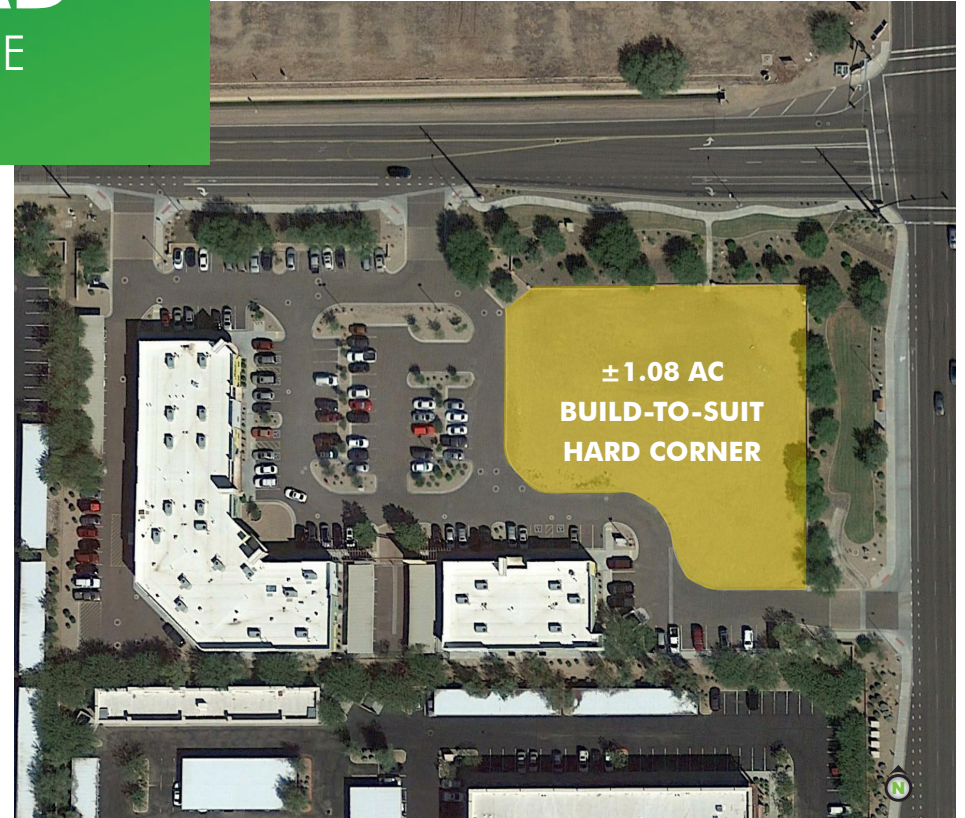


PROPERTY HIGHLIGHTS

FULLY IMPROVED PAD & READY TO BREAK GROUND

This is a hard corner pad adjacent to the $\pm 25,000$ SF Dobson Pecos Village medical office complex developed in 2009. Just a block south from Chandler Regional Medical Center, and one block off the 202 exit ramp on the west side of Dobson Road). The site can accommodate a building (or multiple buildings) up to approximately $\pm 10,500$ SF.

- + C-2 Zoning
- + Site and zoning allows for drive-thru
- + Easements and utilities in place
- + Uses including but not limited to office, medical, retail, restaurant, bank, child care and is also approved for a drive-thru.



CONTACT US

KATE MORRIS

+1 602 735 1790
kate.morris@cbre.com

VINCE FEMIANO

+1 602 735 1793
vince.femiano@cbre.com

www.cbre.us/phoenixhealthcare

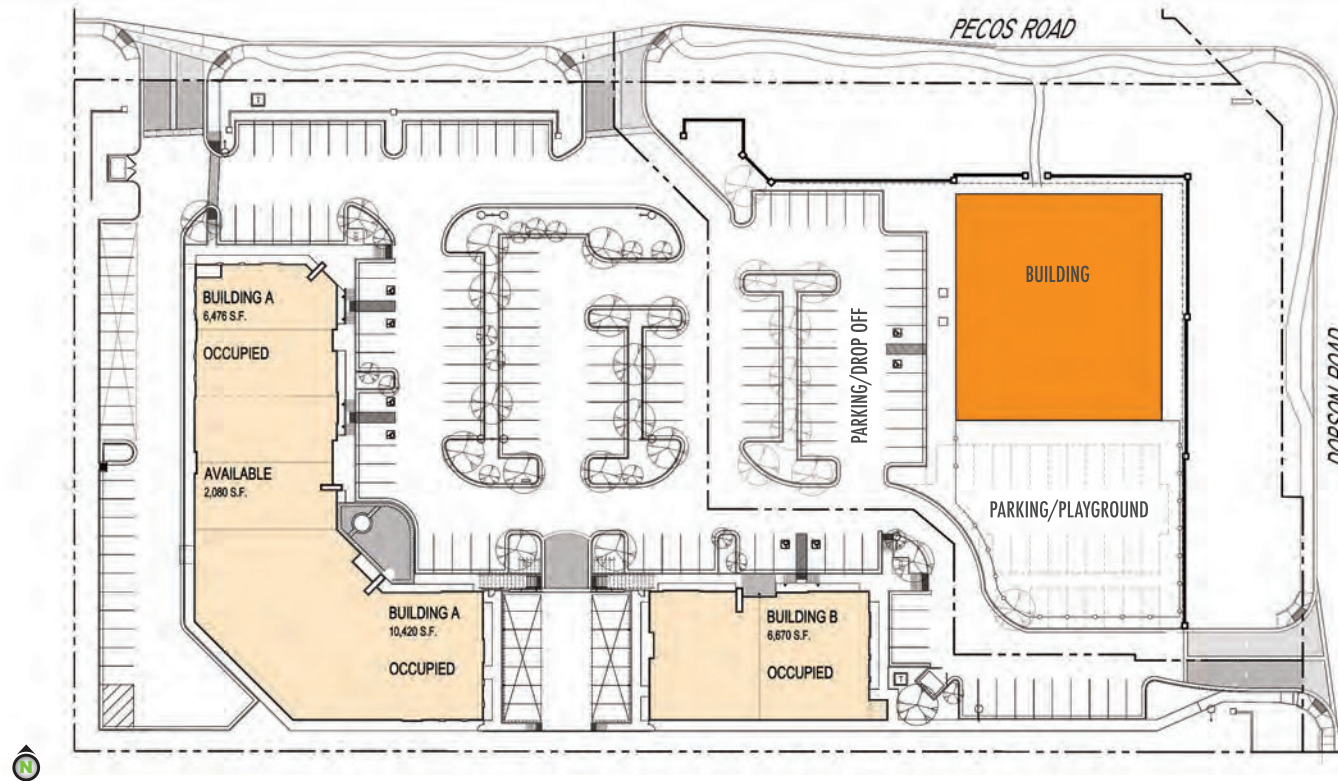
CBRE

FOR LEASE
1050 S DOBSON ROAD

CORNER PAD @ DOBSON PECOS VILLAGE
CHANDLER, AZ 85224



SITE PLAN



NOT TO SCALE, ALL DIMENSIONS ARE APPROXIMATE

© 2018 CBRE, Inc. All rights reserved. This information has been obtained from sources believed reliable, but has not been verified for accuracy or completeness. You should conduct a careful, independent investigation of the property and verify all information. Any reliance on this information is solely at your own risk. CBRE and the CBRE logo are service marks of CBRE, Inc. All other marks displayed on this document are the property of their respective owners. Photos herein are the property of their respective owners. Use of these images without the express written consent of the owner is prohibited.