

11905-11923 Borman Drive
St. Louis, MO 63146

4,505 SF OFFICE / WAREHOUSE AVAILABLE FOR LEASE



HUTKIN DEVELOPMENT COMPANY

10829 Olive Boulevard
Suite 200
St. Louis, MO 63141

Telephone 314.872.9140
FAX 314.872.9001

Visit our website:
www.hutkin.com

CONTACT

Tony Giarratano
tony@hutkin.com
Direct 314.708.4922
Cell 314.276.2352

Bo Keefer
bkeefer@hutkin.com
Direct 314.708.1258
Cell 314.973.1242

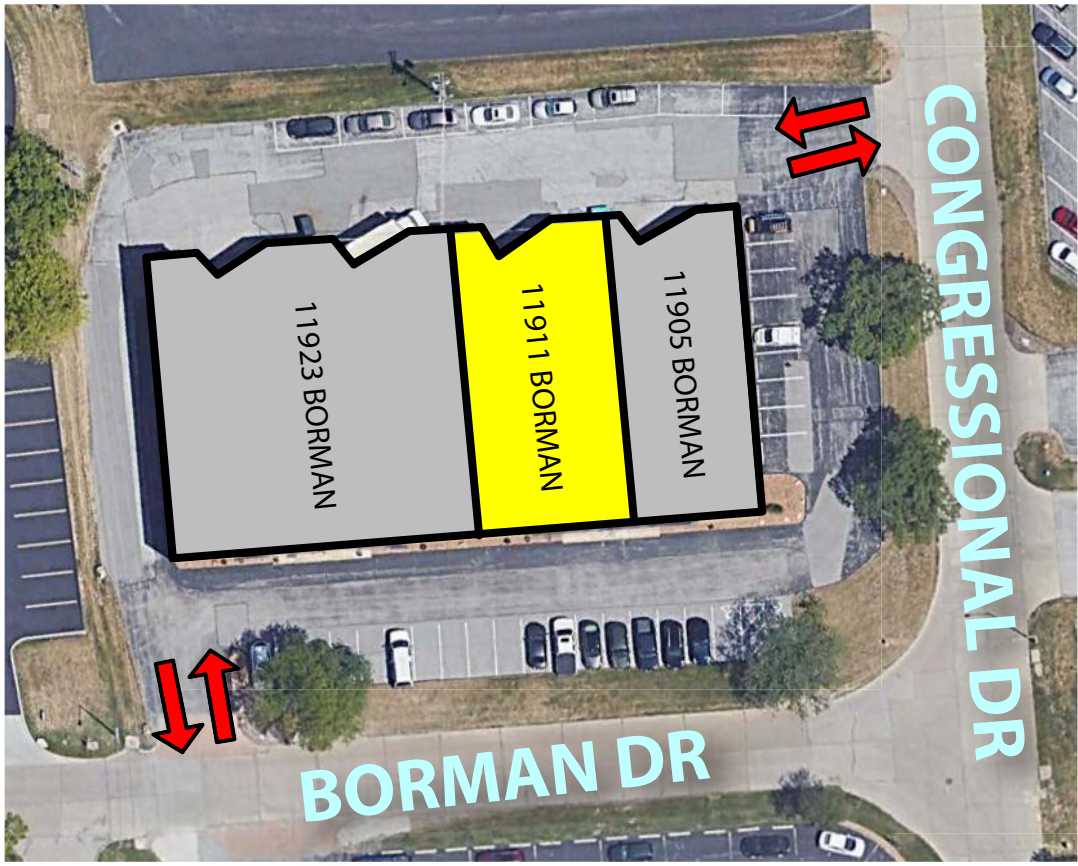
- **4,505 SF Available**
- 11911 Borman Drive
- 16' ceiling height
- 100% HVAC
- Dock-high loading

■ **LEASE RATE: \$6.75 PSF NNN**

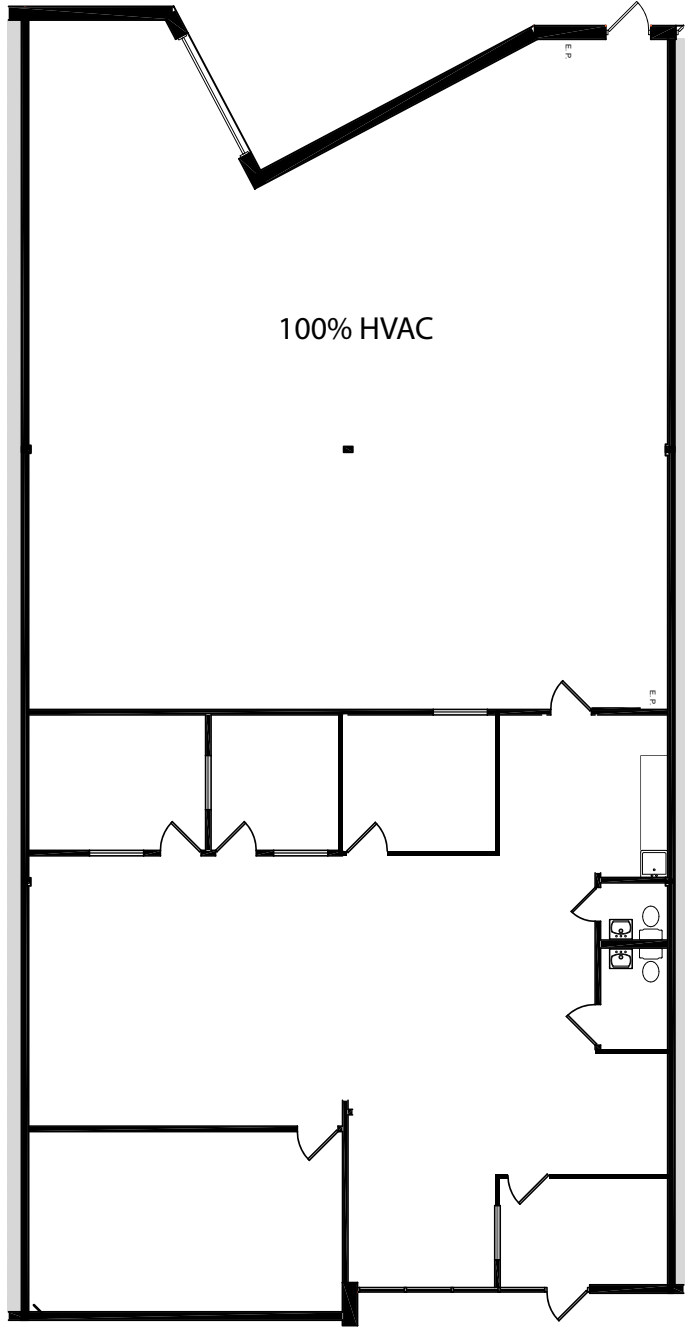
- 50% good quality office finish
- Located at the intersection of Borman Drive and Congressional Drive just east of Craig Road
- Ample parking
- Easy access to Page Ave and I-270 in the heart of Westport

11905-11923 Borman Drive
St. Louis, MO 63146

4,505 SF OFFICE / WAREHOUSE AVAILABLE FOR LEASE



NO.	ADDRESS	STATUS	SIZE (SF)
1	11905 Borman	Occupied	4,505
2	11911 Borman	AVAILABLE	4,505
3	11923 Borman	Occupied	9,000



11905-11923 Borman Drive
St. Louis, MO 63146

4,505 SF OFFICE / WAREHOUSE
AVAILABLE FOR LEASE

