

FOR LEASE

Meeker Square
1313 W Meeker St, Kent, WA



FEATURES

1,557 to 11,000 SF available

Major tenant: Big Lots, Rite Aid, Jimmy John's & Emerald City Smoothie

High visibility pad building available - can be demised

Restaurant and in-line retail suites available

Pylon and building signage available with ample parking

24,800 CPD on W Meeker Street & 25,830 CPD on Washington Avenue N

Located on Kent's "Main Street Corridor"

Full access from W Meeker Street & Washington Avenue N

45% increase in population and 50% increase in households (2000-2018 Source - CoStar)

Walkscore of 76

CONTACT

Benjamin A. Norbe
253.722.1410
bnorbe@kiddermathews.com

Rachel Corp
253.722.1417
rcorp@kiddermathews.com



FOR LEASE

1313 W Meeker Street, Kent, WA



CONTACT

Benjamin A. Norbe
253.722.1410
bnorbe@kiddermathews.com

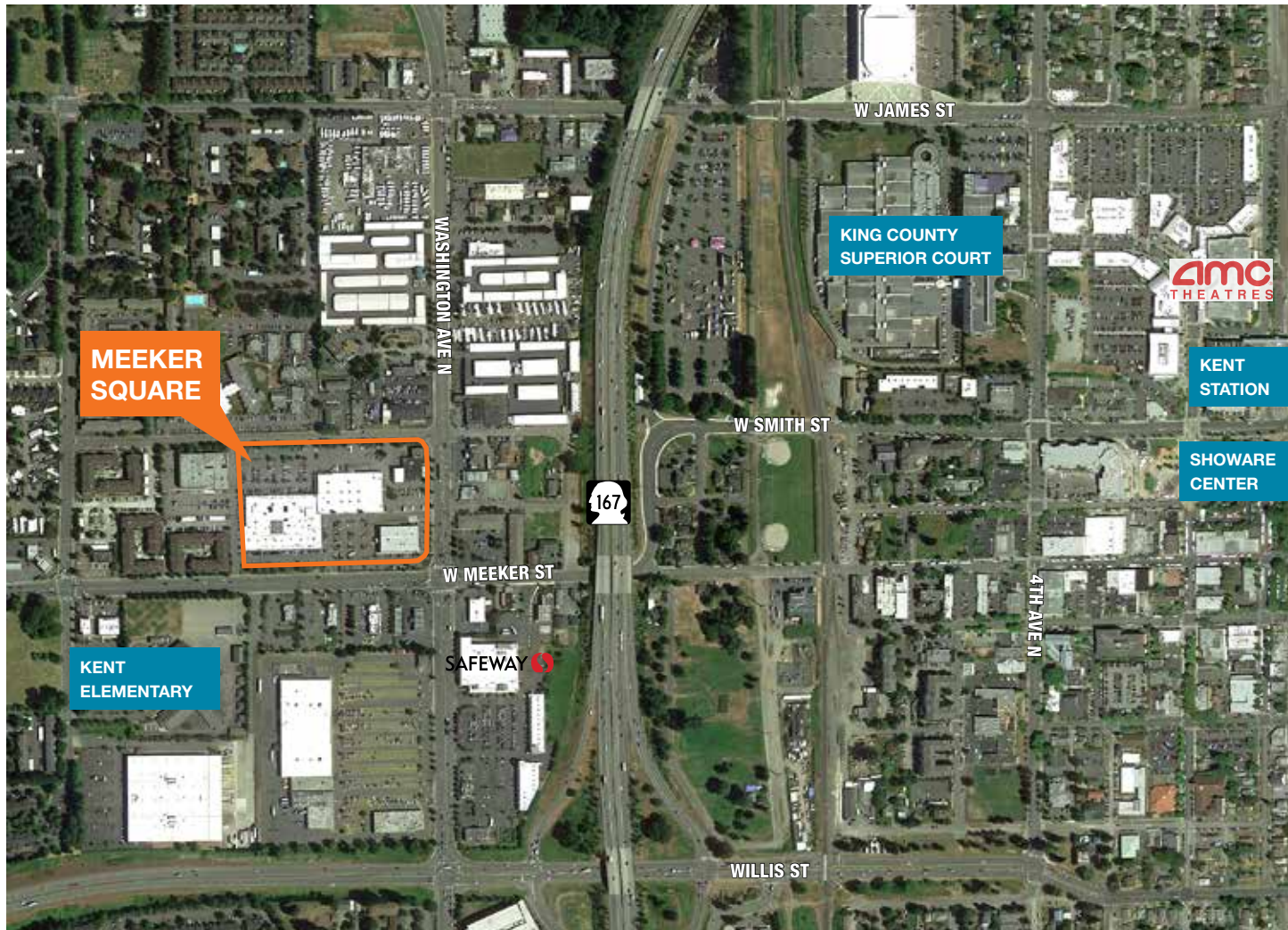
Rachel Corp
253.722.1417
rcorp@kiddermathews.com



FOR LEASE

1313 W Meeker Street, Kent, WA

LOCATION AERIAL



CONTACT

Benjamin A. Norbe
253.722.1410
bnorbe@kiddermathews.com

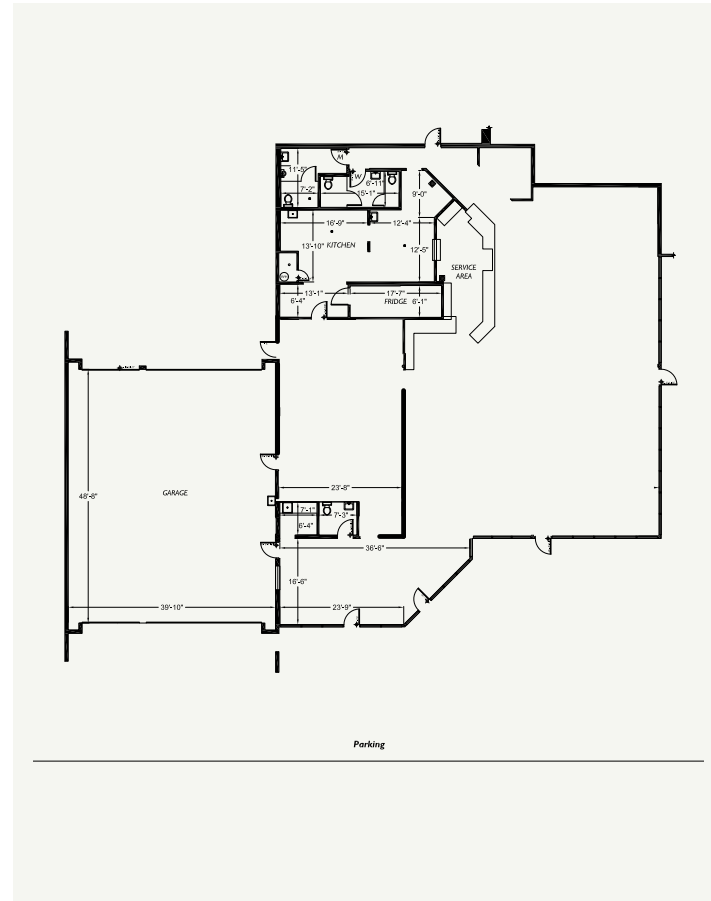
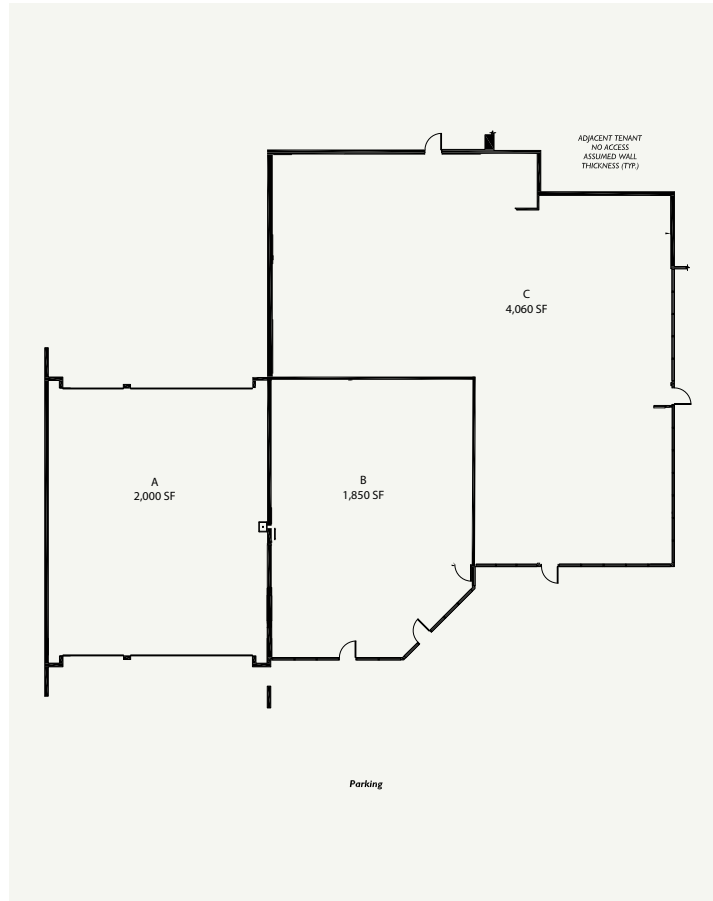
Rachel Corp
253.722.1417
rcorp@kiddermathews.com



FOR LEASE

1313 W Meeker Street, Kent, WA

PAD BUILDING OPTIONS



CURRENT DEMISING PLAN

CONTACT

Benjamin A. Norbe
253.722.1410
bnorbe@kiddermathews.com

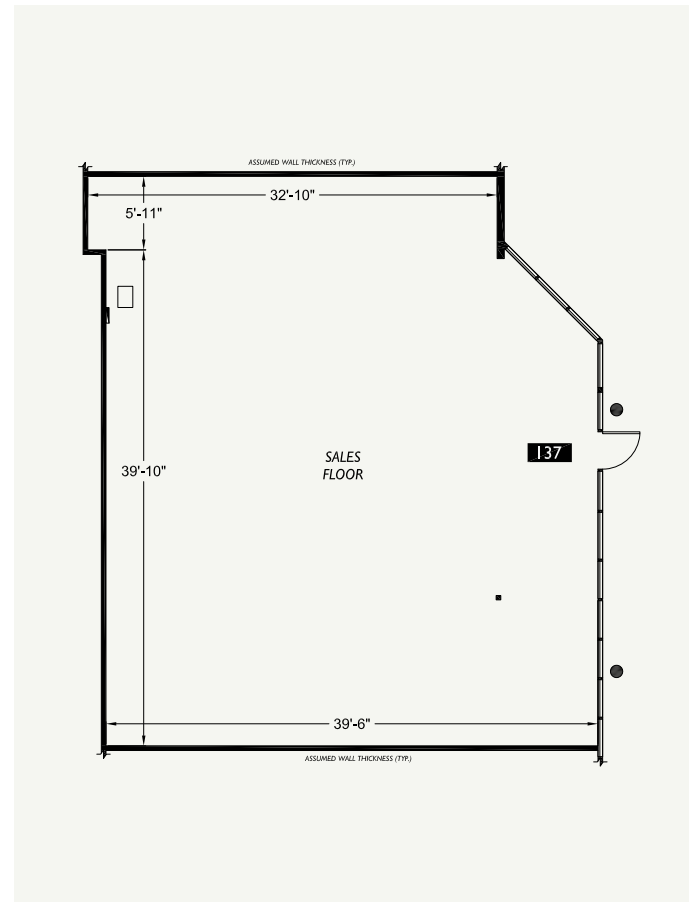
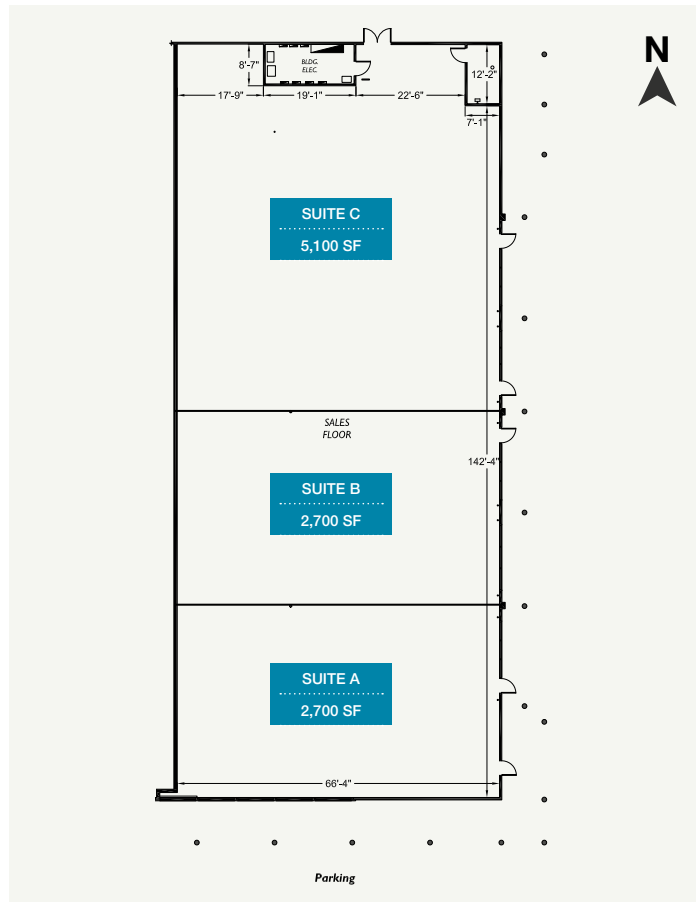
Rachel Corp
253.722.1417
rcorp@kiddermathews.com



FOR LEASE

1313 W Meeker Street, Kent, WA

SITE PLAN



POSSIBLE DEMISING PLAN

A, B & C

CONTACT

Benjamin A. Norbe
253.722.1410
bnorbe@kiddermathews.com

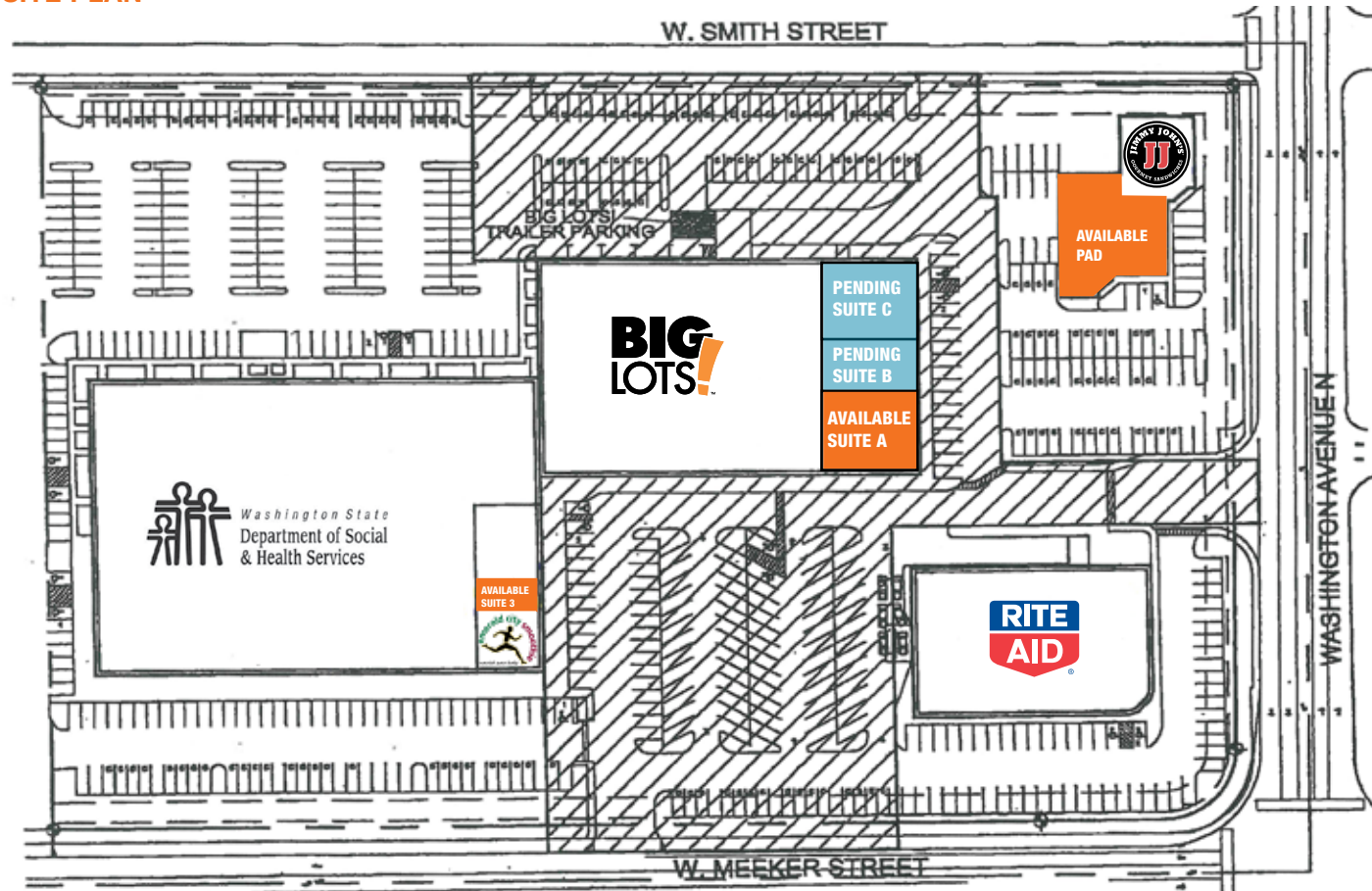
Rachel Corp
253.722.1417
rcorp@kiddermathews.com



FOR LEASE

1313 W Meeker Street, Kent, WA

SITE PLAN



CONTACT

Benjamin A. Norbe
253.722.1410
bnorbe@kiddermathews.com

Rachel Corp
253.722.1417
rcorp@kiddermathews.com

AVAILABLE SPACE

Suite	Size	Rent	Comments
Suite 3	1,557 SF	\$26.00	40 foot store front with abundant glass
Suite A	3,400 SF	\$24.00	Prominent end cap space
Suite B & C	7,105 SF	PENDING	
Pad Building	7,910 SF	\$22.00-\$28.00	Can be demised to 1,850 SF

