

# PRIME RETAIL SPACE ADJACENT TO KOHL'S

Tupelo, MS 38802 | 3982 North Gloster Street | N Gloster Street & Barnes Crossing Blvd | #1183



AVAILABLE SF:  
24,900 SF

FRONTAGE:  
APPROX 98' 3"

ZONING:  
COMMERCIAL

RATES:  
CALL FOR DETAILS

## AREA ANCHORS:



- Part of King's Crossing, a 116,953 sf power center
- Strategically positioned along North Gloster and just north of I-22 and just west of US-78
- Adjacent to The Mall at Barnes Crossing and is in the heart of regional shopping destination for NE Mississippi and West Alabama
- Co Tenants include Ross, Five Below and PetCo

DEMOGRAPHICS	3 MILE	5 MILES	7 MILES	TRAFFIC COUNTS	
2018 POPULATION	8,148	33,907	52,573	N Gloster St	21,000 VPD
2018 DAYTIME POPULATION	12,951	54,180	75,780	Martin Luther King Jr Dr	37,000 VPD
2018 AVERAGE HH INCOME	\$73,869	\$63,956	\$67,635		
2018 MEDIAN HH INCOME	\$54,511	\$46,912	\$49,971		



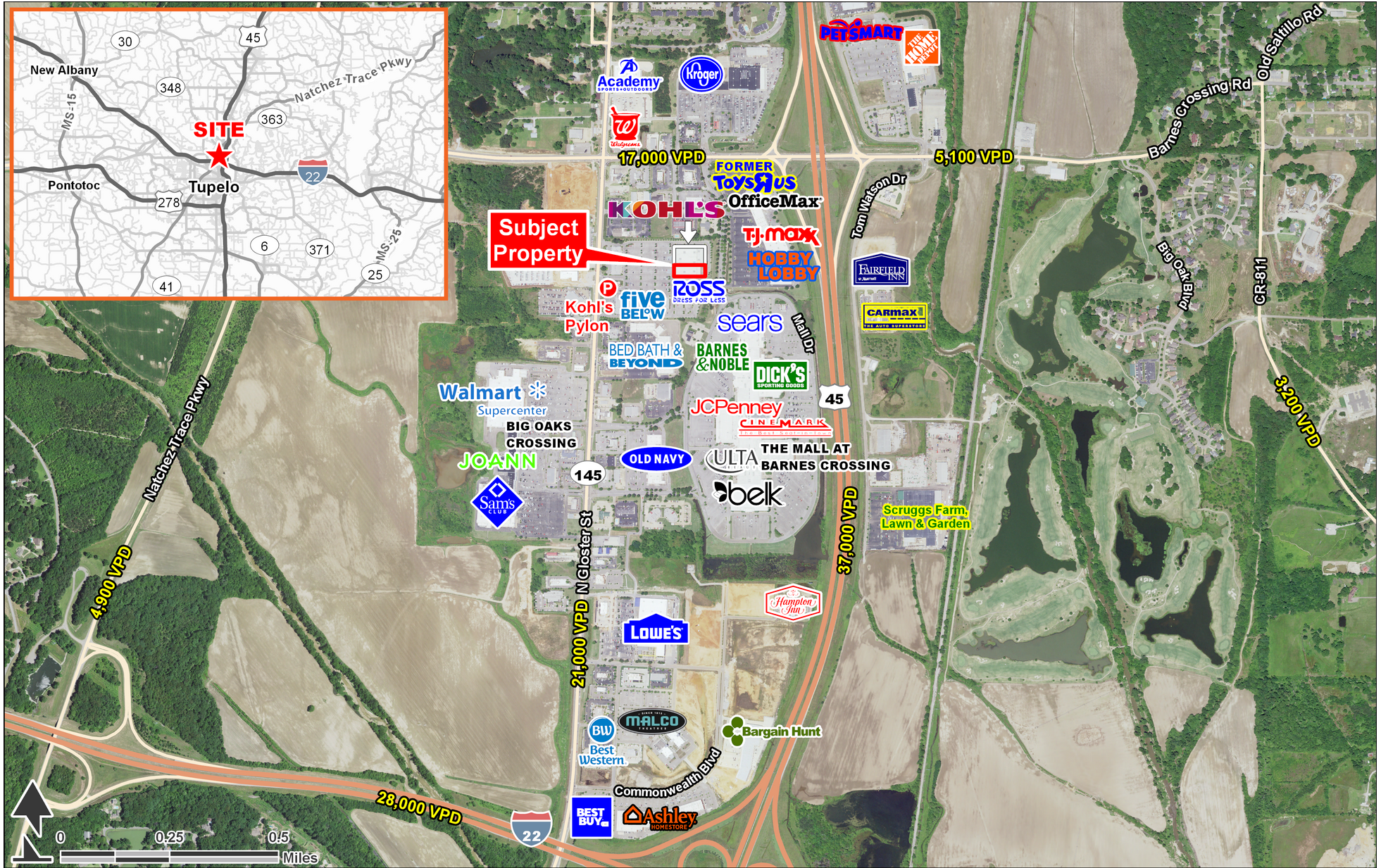
FOR MORE INFORMATION, CONTACT EXCLUSIVE AGENT(S):  
KATHY DENNIS, CCIM • kathy.dennis@tscg.com • 205.776.6708

Demographics: Esri 2018 No warranty expressed or implied has been made as to the accuracy of the information provided herein, no liability assumed for error or omissions.



# PRIME RETAIL SPACE ADJACENT TO KOHL'S

Tupelo, MS 38802 | 3982 North Gloster Street | N Gloster Street & Barnes Crossing Blvd | #1183



FOR MORE INFORMATION, CONTACT EXCLUSIVE AGENT(S):  
 KATHY DENNIS, CCIM • [kathy.dennis@tscg.com](mailto:kathy.dennis@tscg.com) • 205.776.6708



Demographics: Esri 2018 No warranty expressed or implied has been made as to the accuracy of the information provided herein, no liability assumed for error or omissions.

# PRIME RETAIL SPACE ADJACENT TO KOHL'S

Tupelo, MS 38802 | 3982 North Gloster Street | N Gloster Street & Barnes Crossing Blvd | #1183



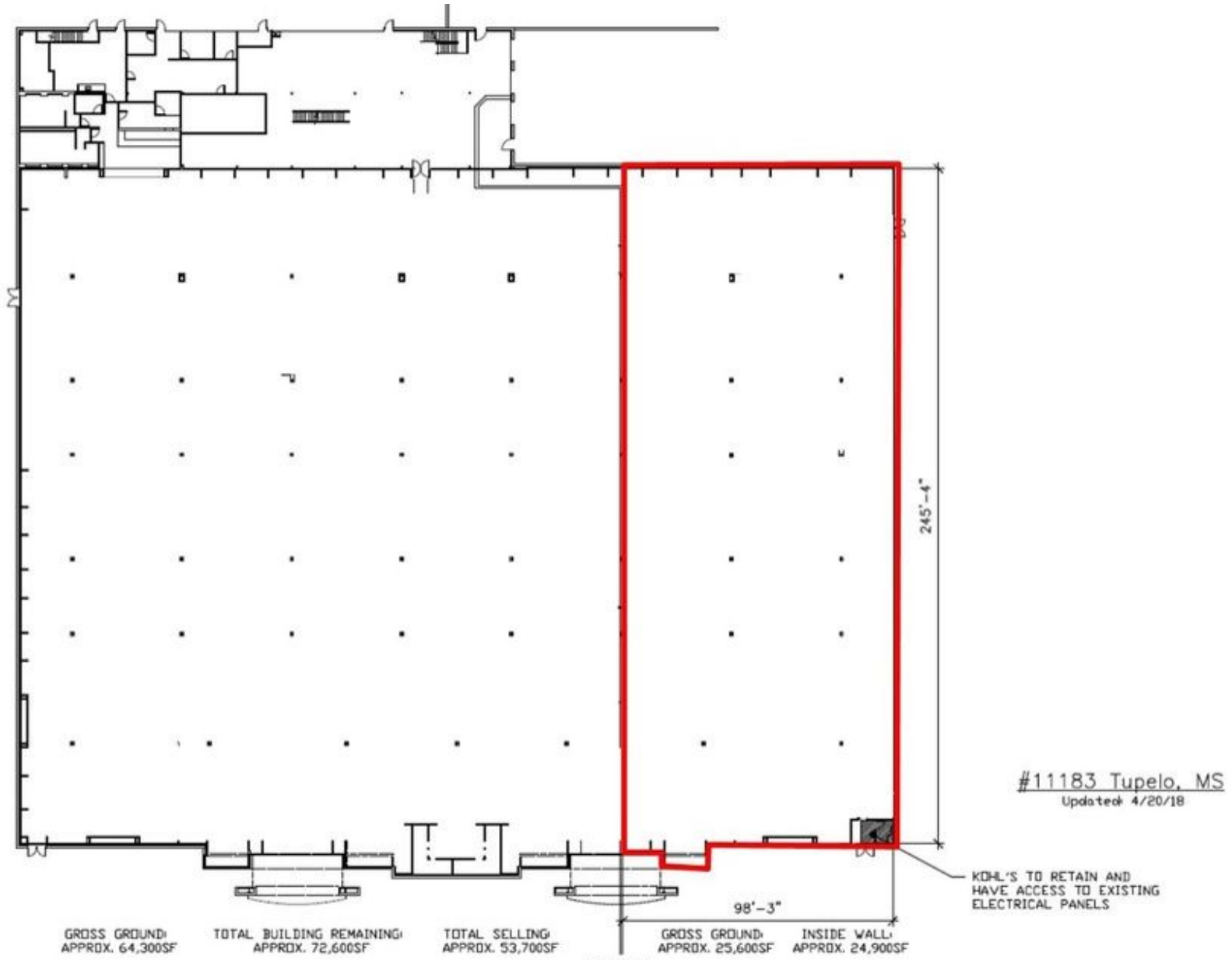
FOR MORE INFORMATION, CONTACT EXCLUSIVE AGENT(S):  
 KATHY DENNIS, CCIM • [kathy.dennis@tscg.com](mailto:kathy.dennis@tscg.com) • 205.776.6708



Demographics: Esri 2018 No warranty expressed or implied has been made as to the accuracy of the information provided herein, no liability assumed for error or omissions.

# PRIME RETAIL SPACE ADJACENT TO KOHL'S

Tupelo, MS 38802 | 3982 North Gloster Street | N Gloster Street & Barnes Crossing Blvd | #1183



FOR MORE INFORMATION, CONTACT EXCLUSIVE AGENT(S):  
KATHY DENNIS, CCIM • [kathy.dennis@tscg.com](mailto:kathy.dennis@tscg.com) • 205.776.6708

