

FOR LEASE // 604 FEDERAL ROAD (RTE. 7), UNIT 1A, BROOKFIELD, CT



PROPERTY DESCRIPTION

First floor office space with private office, large open area, shared baths and kitchenette. Office has lots of windows, easy access to Super 7 and I-84, great parking and signage on Route 7. Ideal setting for any professional use!

PROPERTY HIGHLIGHTS

- Large Open Area, Private Office, Shared Baths and Kitchenette
- Zone: C-GS (Commercial)
- Heating: Electric Heat Pump
- Cooling: Central A/C
- Utilities: Well; Sewer
- File Storage Available On Site At No Charge

OFFERING SUMMARY

Lease Rate:	\$14 PSF (Gross) + Utilities
Available SF:	1A: +/- 1,330 SF 1B: +/- 2,100 SF Combined: +/- 3,430 SF
Building Size:	+/- 50,000 SF

DEMOGRAPHICS	1 MILE	2 MILES	3 MILES
Total Households	1,333	5,221	10,769
Total Population	3,212	12,538	25,118
Average HH Income	\$122,009	\$127,959	\$126,126

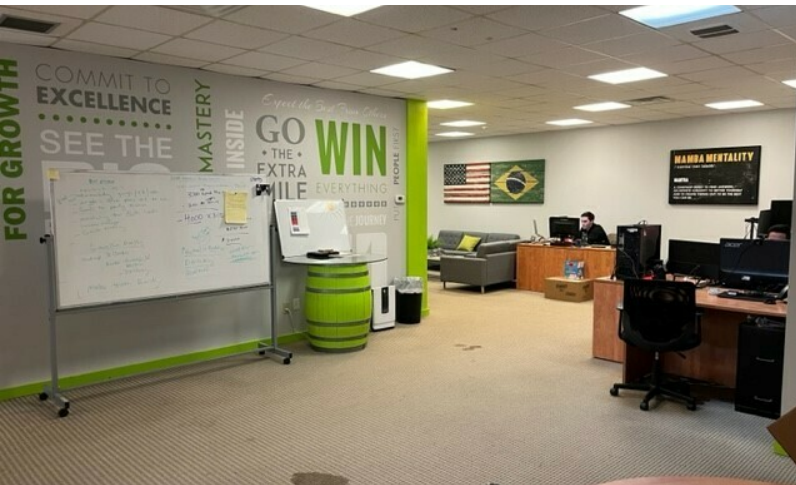


MICK CONSALVO
Broker
 203.241.5188
 mconsalvo@towercorp.com



TOMMY CONSALVO
Broker
 203.482.5792
 tconsalvo@towercorp.com

FOR LEASE // 604 FEDERAL ROAD (RTE. 7), UNIT 1A, BROOKFIELD, CT

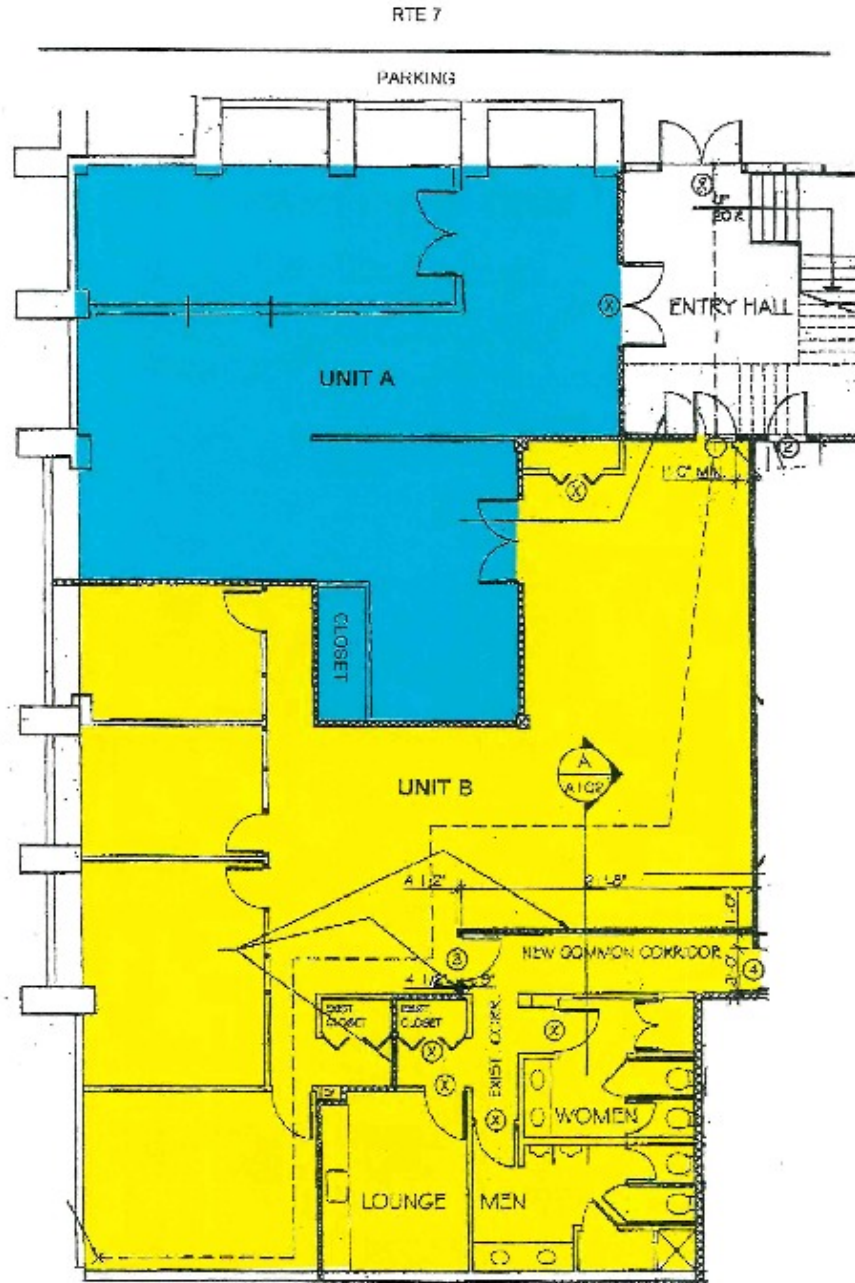


MICK CONSALVO
Broker
203.241.5188
mconsalvo@towercorp.com



TOMMY CONSALVO
Broker
203.482.5792
tconsalvo@towercorp.com

FOR LEASE // 604 FEDERAL ROAD (RTE. 7), UNIT 1A, BROOKFIELD, CT

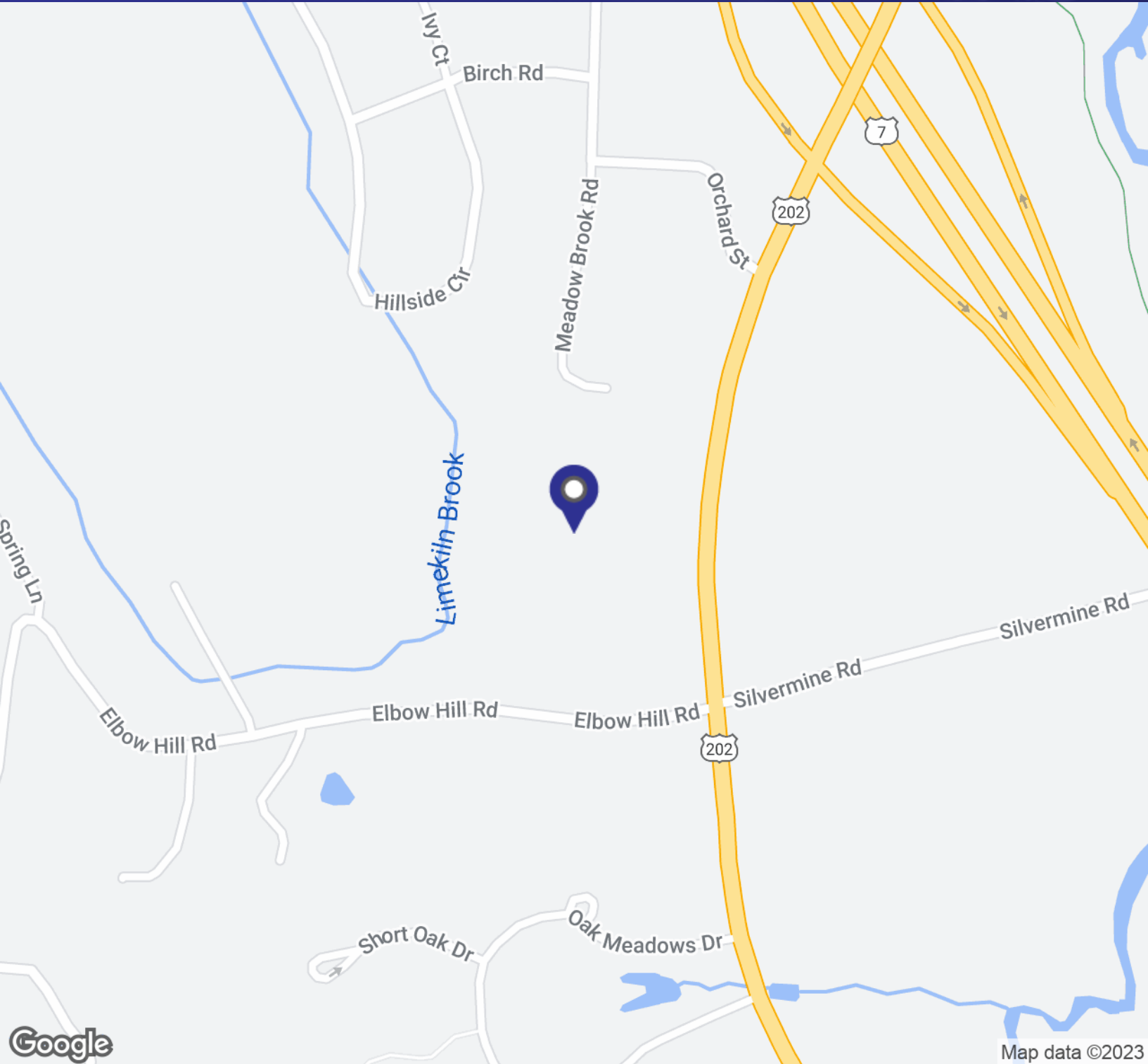


MICK CONSALVO
Broker
 203.241.5188
 mconsalvo@towercorp.com



TOMMY CONSALVO
Broker
 203.482.5792
 tconsalvo@towercorp.com

FOR LEASE // 604 FEDERAL ROAD (RTE. 7), UNIT 1A, BROOKFIELD, CT



MICK CONSALVO

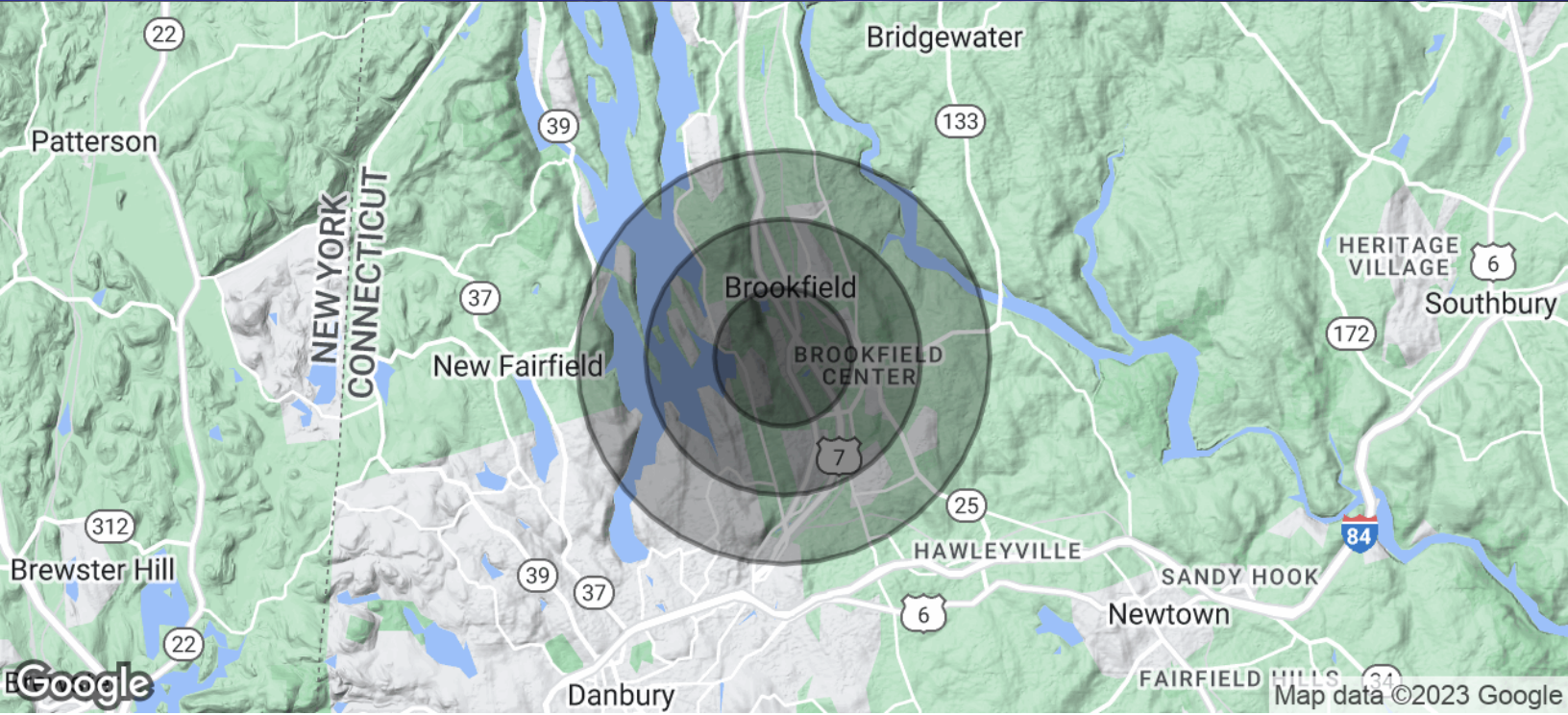
Broker
203.241.5188
mconsalvo@towercorp.com



TOMMY CONSALVO

Broker
203.482.5792
tconsalvo@towercorp.com

FOR LEASE // 604 FEDERAL ROAD (RTE. 7), UNIT 1A, BROOKFIELD, CT



POPULATION	1 MILE	2 MILES	3 MILES
Total Population	3,212	12,538	25,118
Average Age	42.0	44.3	45.3
Average Age (Male)	39.8	42.3	44.3
Average Age (Female)	42.4	44.0	44.9

HOUSEHOLDS & INCOME	1 MILE	2 MILES	3 MILES
Total Households	1,333	5,221	10,769
# of Persons per HH	2.4	2.4	2.3
Average HH Income	\$122,009	\$127,959	\$126,126
Average House Value	\$362,049	\$364,301	\$371,397

* Demographic data derived from 2020 ACS - US Census



MICK CONSALVO
Broker
 203.241.5188
 mconsalvo@towercorp.com



TOMMY CONSALVO
Broker
 203.482.5792
 tconsalvo@towercorp.com