

523 PARK POINT DRIVE
Golden, Colorado 80401



PROPERTY FEATURES

- One of the newest buildings in Genesee
- Nine foot interior ceilings
- One covered parking spot
- Large windows wrap the exterior
- Excellent light and outstanding views of the foothills
- Twenty minutes from downtown Denver, easy access via Interstate 70

PROPERTY SPECIFICATIONS

Available:	Suite 100	1,337 RSF
Lease Rate:		\$22.00/SF FSG
Year Built:		2000
Stories:		3
Building Size:		59,773 SF

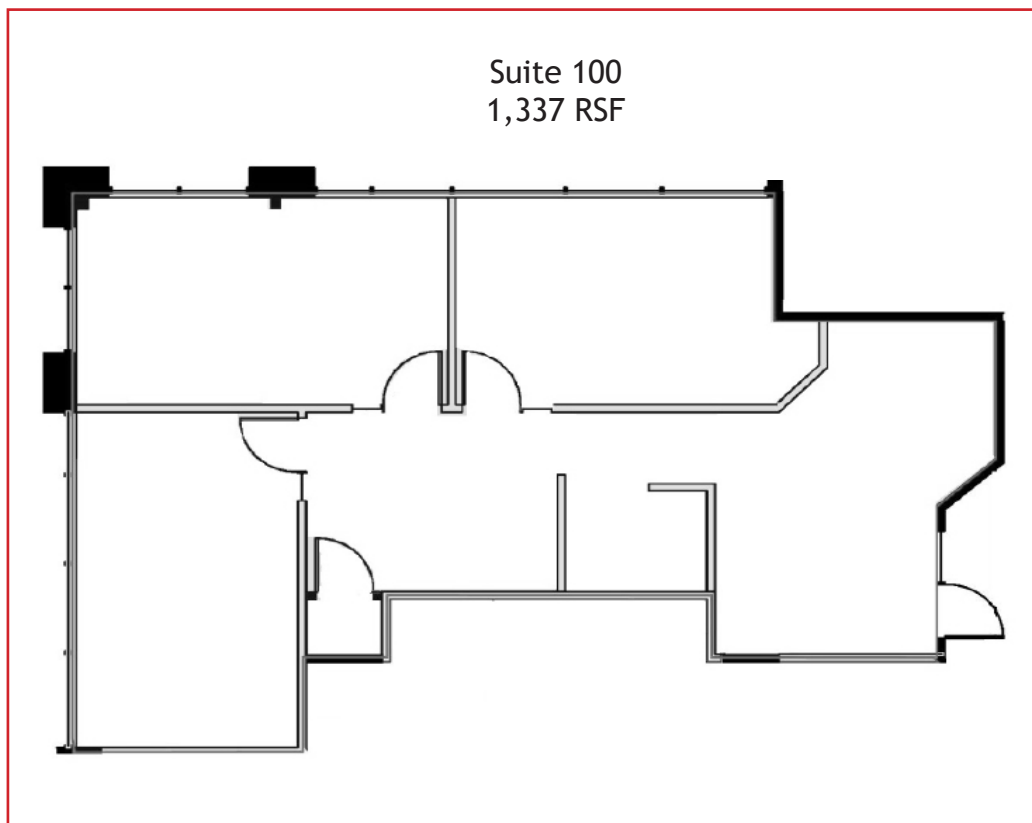
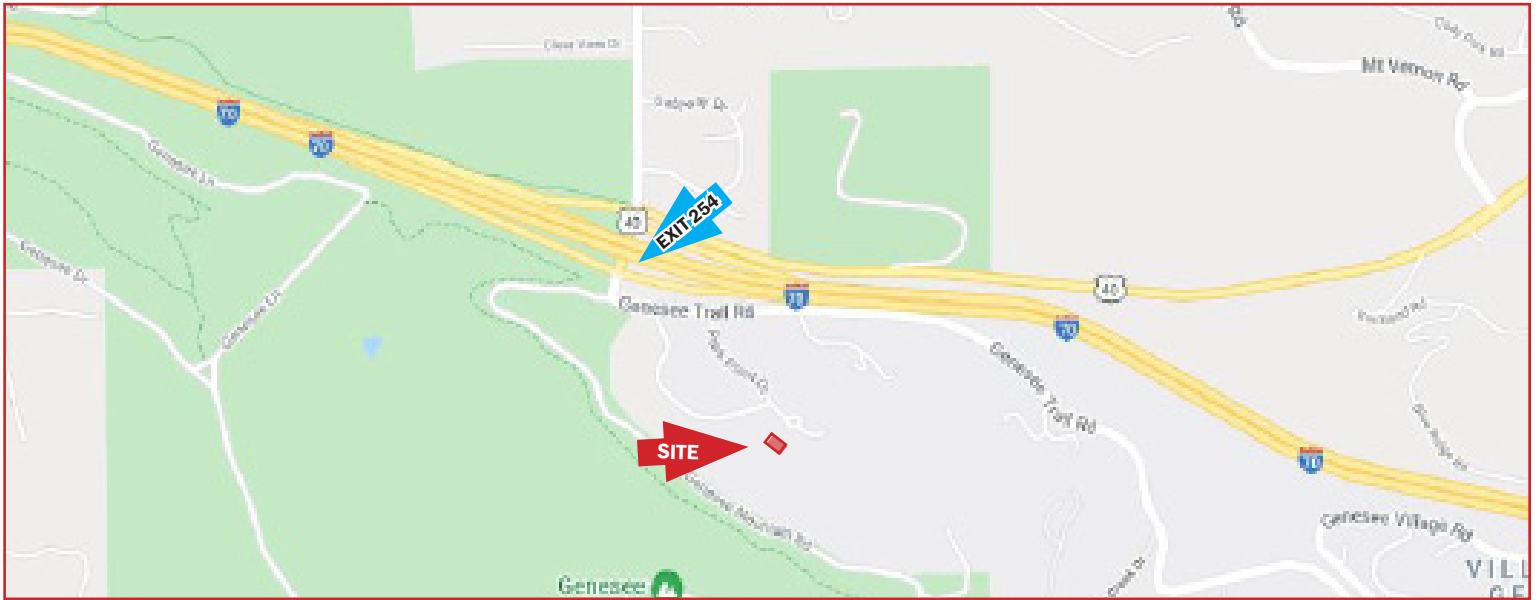
FOR MORE INFORMATION CONTACT:

JAMIE MACBETH

jmacbeth@gcgcre.com | 720.476.5229

RENÉE SPICER

rspicer@gcgcre.com | 720.476.5226



FOR MORE INFORMATION CONTACT:

JAMIE MACBETH

jmacbeth@gcgcre.com | 720.476.5229

RENÉE SPICER

rspicer@gcgcre.com | 720.476.5226