

For Sale

Office Condominium

Lynnfield Woods Office Park

220 Broadway Lynnfield, Ma.



Setting: Lynnfield Woods is a scenic first class, four building office park located on Route One just south of the Route 128 / 95 interchange in Lynnfield. The park is beautifully landscaped and considered the premier office condominium park in Metropolitan Boston. www.lynnfieldwoods.com

Area: 2,536 gross square feet corner suite on the third floor in the North Building (220 Broadway), overlooking pond. The suite has been custom designed and built out to a high quality level of finish with custom cabinetry, an outstanding window line and dramatic views. There are multiple private offices, including a spacious principal's suite, large glass conference room, production area, reception area, kitchenette and ample storage.

Amenities: The park has recently undergone a significant renovation, with additional landscaping upgrades ongoing. On site conference center with full kitchen, tennis court, showers and lockers. Numerous restaurants, shopping and hotels in immediate area.

Sale Price: \$399,000

*For more information or to schedule a property tour,
please contact:*

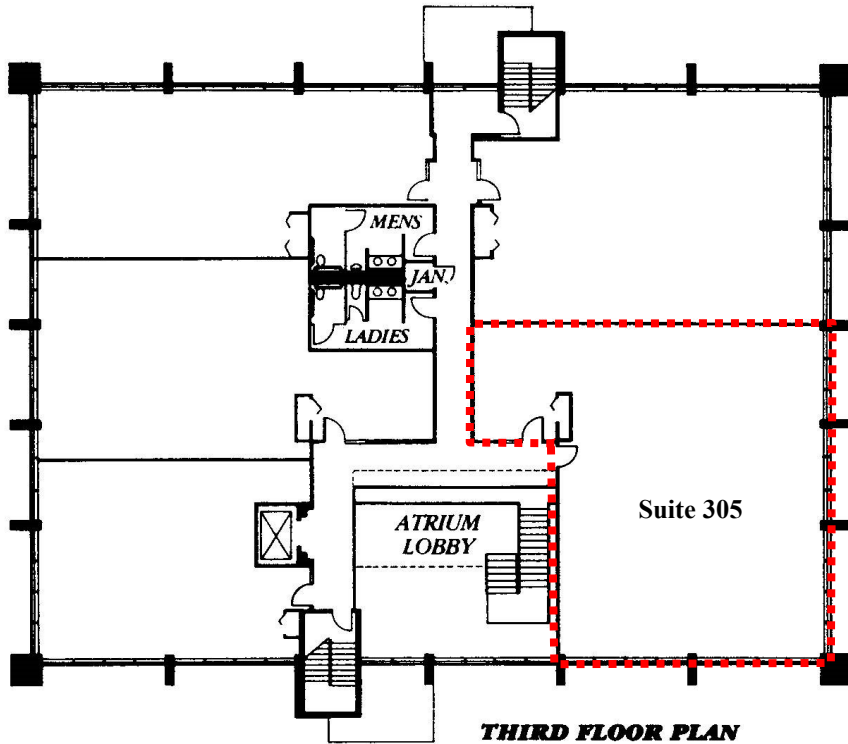
Bill Clark at (781) 596-3400



THE
CLARK
COMPANY

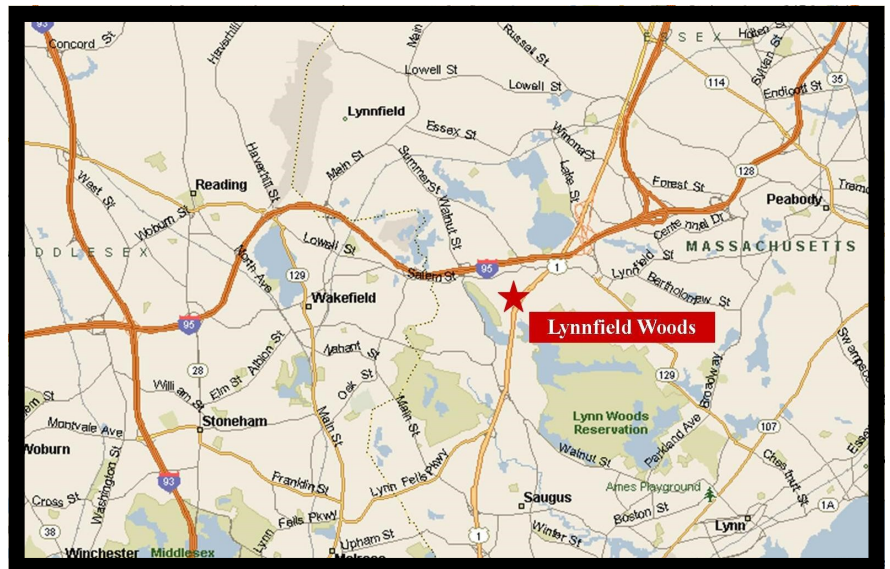
200 Broadway ♦ Lynnfield MA 01940 ♦ T: 781 / 596-3400 ♦ C: 781 / 596-3410 ♦ bill@theclarkcompany.com

Lynnfield Woods Office Condominium Park Lynnfield MA



Suite 305
220 Broadway
North Building
2,536 Gr. Sq Ft
1,999 Net Sq Ft

2018 Real Estate Taxes: \$5,182
2018 Condominium Fees: \$1,145.43
(Park: \$742.87; North Building: \$402.56)



200 Broadway ♦ Lynnfield ♦ MA ♦ 01940 ♦ 781/596-3400 ♦ bill@theclarkcompany.com

All information furnished regarding property is from sources deemed reliable, but no warranty or representation is made as to the accuracy thereof and same is subject to errors, omissions, change of price or other conditions, prior sale or lease, or withdrawal without notice.

Suite 305 2,536 Gross Sq Ft

220 Broadway
Lynnfield Woods Office Park

Plans not to scale

