

## For Sale - 2090 Wilkesboro Hwy



### Location Information

2090 Wilkesboro Hwy  
Statesville, NC 28625  
Intersection of Sullivan Road  
Iredell County  
North Submarket

### Pricing

**Total Price:** \$480,000.00  
**Sale \$/Acre:** \$12,000.00



### Property Details

**Type:** Land

**Subtype:** Single-Family Residential

**Total Acreage:** 40.00

**Parcel ID:** 4736207612,4736200257,473

**Zoning:** R-20

**Property Owner:** Beatty Estate

**Property User:** Any User

**Primary Best Use:** Single-Family Residential

**Water Type:** Contiguous

**Sewer Type:** Private

**Gas Type:** Nearby

**Electric Type:** On-Site

**Topography:** Slopes-Gentle

**Within City Limits:** No

**CPE #:** 47266

### Availability

**List Date:** 8/10/15

**Listing Method:** For Sale Only

**Listing Status:** Available

**Total Available:** 40.00 acres

**Minimum Available:** 40.00 acres

**Maximum Contiguous:** 40.00 acres

### Comments

40 beautiful acres just north of Statesville in path of growth at the corner of a major intersection. Mostly cleared. Zoned R-20. Water source, Iredell Water Corporation. Rolling topography, great development potential or 1031 Exchange, buy and hold. . Approximately 980 feet road frontage on Hwy 115, and 330 feet on Sullivan Farm Road. Property leased year-to-year for agriculture at \$2,000 per year.

### Contact Information

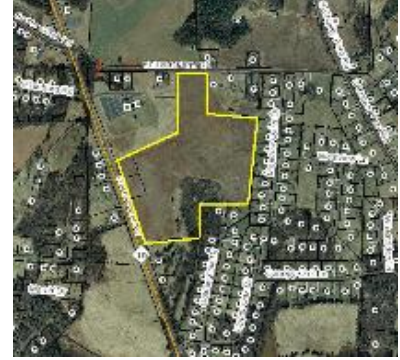
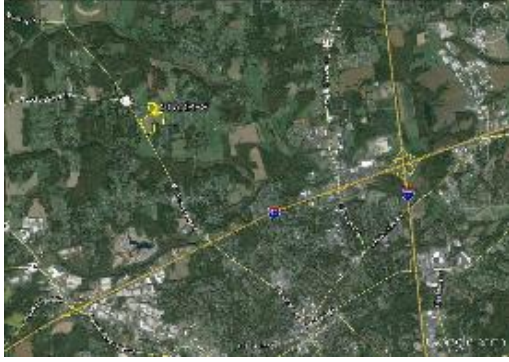


Equity Commercial Properties

114 Morlake Drive Suite 201  
 Mooresville, NC 28117  
<http://www.equitycp.com>

**Frank Harmon**  
704.677.5320  
[fharmonequitycp.com](mailto:fharmonequitycp.com)

# For Sale - 2090 Wilkesboro Hwy





For Sale - 2090 Wilkesboro Hwy

