

**FOR  
LEASE**

# 11 CENTURY HILL DRIVE

LATHAM, NY 12110

**3,065 SF CLASS A OFFICE SUITE**

**BUILDING**



**FEATURES**

- **3,065 SF FIRST FLOOR CLASS A OFFICE SUITE**
- FIRST FLOOR CORNER SUITE IMMEDIATELY OFF THE MAIN LOBBY
- PROFESSIONAL OFFICE PARK SETTING
- MAY BE AVAILABLE FULLY FURNISHED
- AMPLE PARKING
- JANITORIAL INCLUDED
- ONLY MINUTES TO I-787, I-87 (NORTHWAY), ALBANY INTERNATIONAL AIRPORT, AND NUMEROUS RETAIL, DINING AND HOTEL OPTIONS

FOR MORE  
INFORMATION  
PLEASE  
CONTACT

**RUDY R. LYNCH, CCIM**  
NYS Licensed Associate Real Estate Broker  
(518) 462-7491 x 207 office  
(518) 337-3705 mobile  
Rudy@CarrowRealEstate.com

**FOR LEASE**  
**\$18.50 PSF PLUS UTILITIES**



Adding Value Through Professional Real Estate Services

the information herein has not been verified, and is provided without warranty unless otherwise guaranteed in writing. readers are advised to investigate and verify same prior to entering into a transaction.

**FOR  
LEASE**

# 11 CENTURY HILL DRIVE

LATHAM, NY 12110

PHOTOS



FOR MORE  
INFORMATION  
PLEASE  
CONTACT

**RUDY R. LYNCH, CCIM**  
NYS Licensed Associate Real Estate Broker  
(518) 462-7491 x 207 office  
(518) 337-3705 mobile  
Rudy@CarrowRealEstate.com



Adding Value Through Professional Real Estate Services

the information herein has not been verified, and is provided without warranty unless otherwise guaranteed in writing.  
readers are advised to investigate and verify same prior to entering into a transaction.

**FOR  
LEASE**

# 11 CENTURY HILL DRIVE

LATHAM, NY 12110

PHOTOS



FOR MORE  
INFORMATION  
PLEASE  
CONTACT

**RUDY R. LYNCH, CCIM**  
NYS Licensed Associate Real Estate Broker  
(518) 462-7491 x 207 office  
(518) 337-3705 mobile  
Rudy@CarrowRealEstate.com



Adding Value Through Professional Real Estate Services

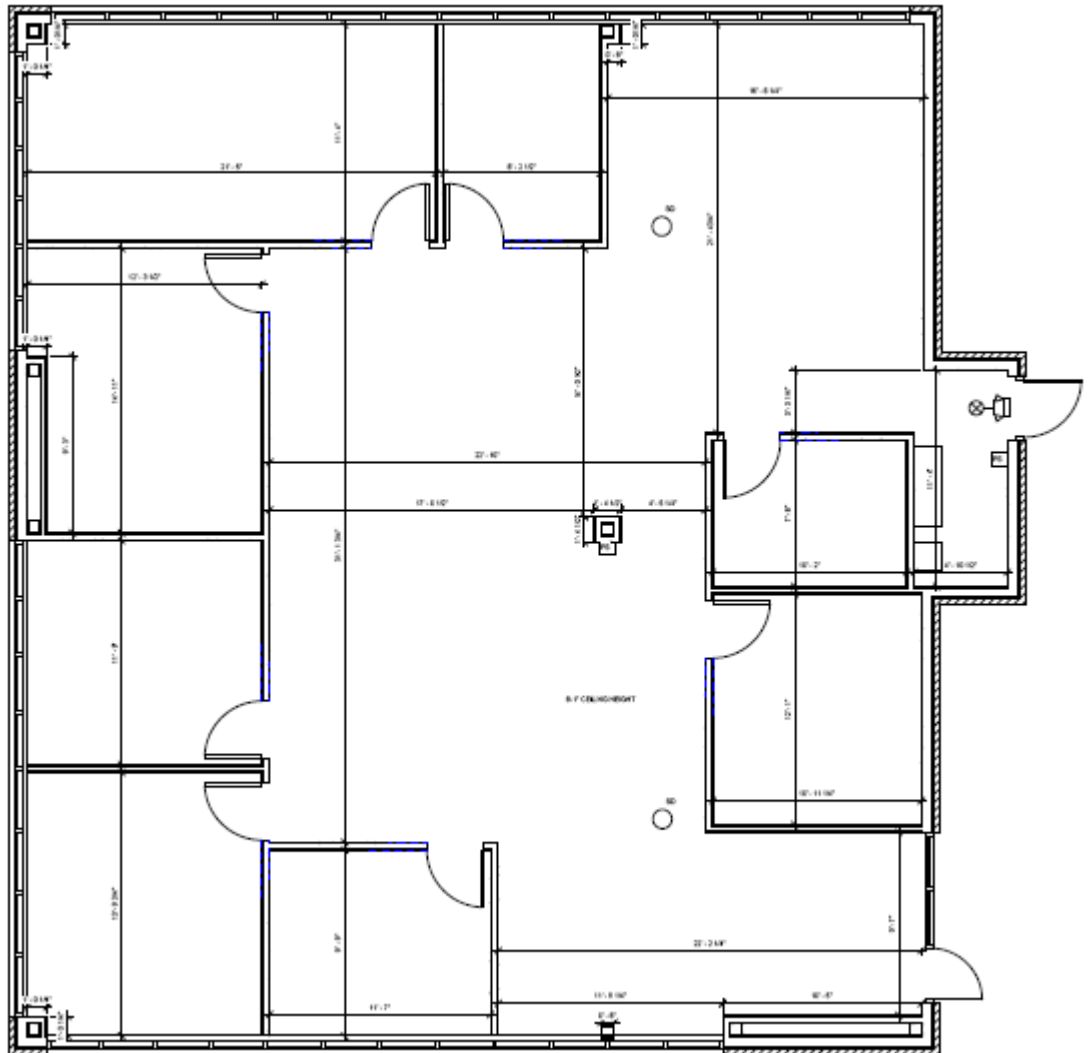
the information herein has not been verified, and is provided without warranty unless otherwise guaranteed in writing. readers are advised to investigate and verify same prior to entering into a transaction.

**FOR  
LEASE**

# 11 CENTURY HILL DRIVE

LATHAM, NY 12110

FLOOR PLAN



FOR MORE  
INFORMATION  
PLEASE  
CONTACT

**RUDY R. LYNCH, CCIM**  
NYS Licensed Associate Real Estate Broker  
(518) 462-7491 x 207 office  
(518) 337-3705 mobile  
Rudy@CarrowRealEstate.com



Adding Value Through Professional Real Estate Services

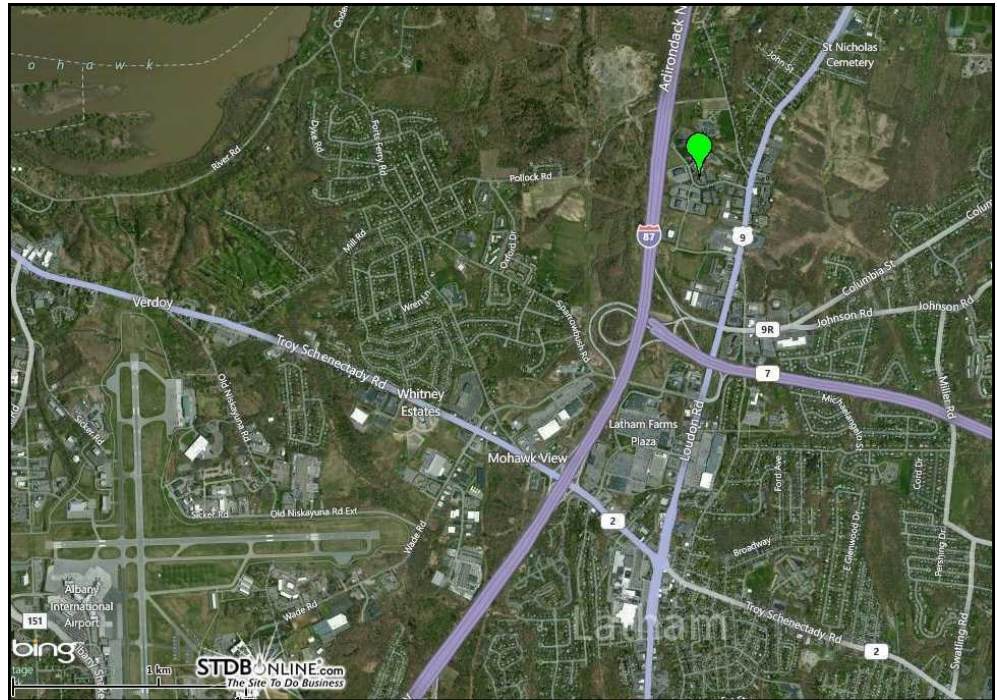
the information herein has not been verified, and is provided without warranty unless otherwise guaranteed in writing. readers are advised to investigate and verify same prior to entering into a transaction.

**FOR  
LEASE**

# 11 CENTURY HILL DRIVE

LATHAM, NY 12110

LOCATION



AERIAL VIEW



FOR MORE  
INFORMATION  
PLEASE  
CONTACT

**RUDY R. LYNCH, CCIM**  
NYS Licensed Associate Real Estate Broker  
(518) 462-7491 x 207 office  
(518) 337-3705 mobile  
Rudy@CarrowRealEstate.com



Adding Value Through Professional Real Estate Services

the information herein has not been verified, and is provided without warranty unless otherwise guaranteed in writing. readers are advised to investigate and verify same prior to entering into a transaction.

**FOR  
LEASE**

# 11 CENTURY HILL DRIVE

LATHAM, NY 12110

## DEMOGRAPHICS

Population	3 Mile	5 Mile	10 Mile
2015 Total Population:	42,137	136,680	490,833
2020 Population:	42,844	138,250	496,495
Pop Growth 2015-2020:	1.68%	1.15%	1.15%
Average Age:	40.70	39.50	38.80
Households			
2015 Total Households:	18,108	57,339	202,501
HH Growth 2015-2020:	1.75%	1.20%	1.20%
Median Household Inc:	\$57,783	\$56,121	\$56,309
Avg Household Size:	2.30	2.30	2.30
2015 Avg HH Vehicles:	2.00	2.00	2.00
Housing			
Median Home Value:	\$213,861	\$208,610	\$194,518
Median Year Built:	1968	1962	1959



FOR MORE  
INFORMATION  
PLEASE  
CONTACT

### RUDY R. LYNCH, CCIM

NYS Licensed Associate Real Estate Broker  
(518) 462-7491 x 207 office  
(518) 337-3705 mobile  
Rudy@CarrowRealEstate.com



Adding Value Through Professional Real Estate Services

the information herein has not been verified, and is provided without warranty unless otherwise guaranteed in writing. readers are advised to investigate and verify same prior to entering into a transaction.