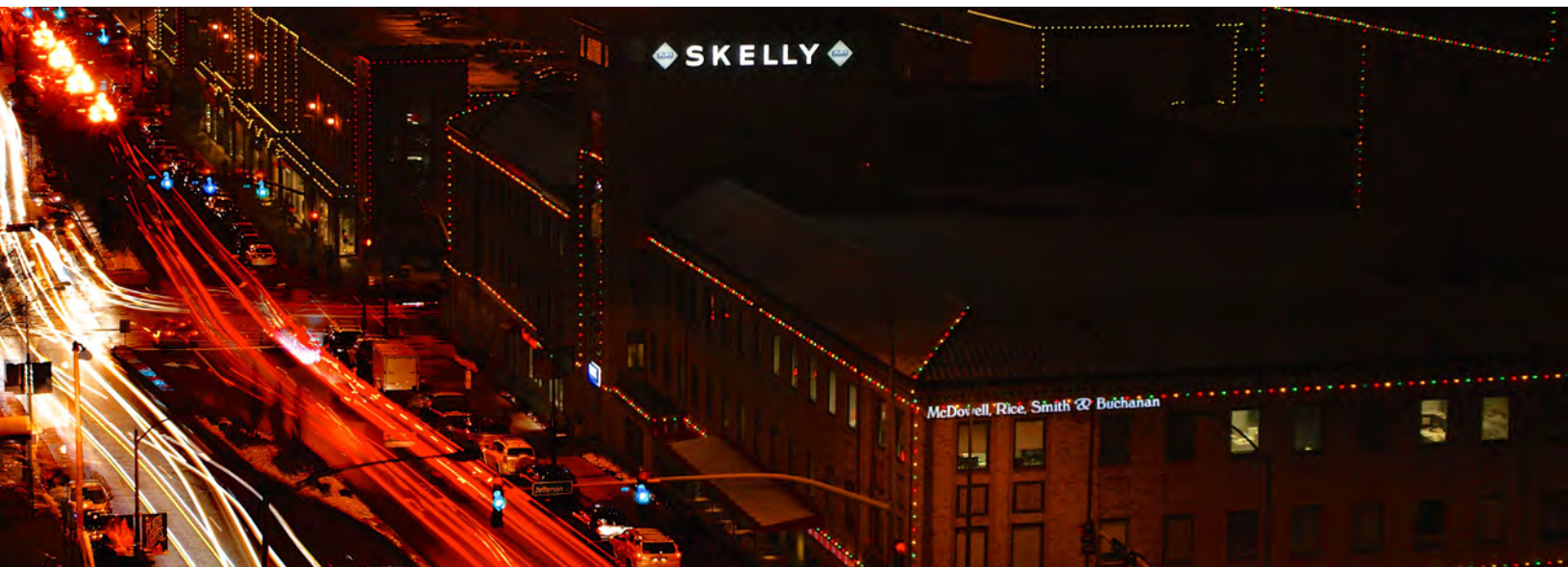




# SKELLY BUILDING ON THE COUNTRY CLUB PLAZA

Kansas City's High End Retail, Restaurant, Hotel, Office, and Entertainment District - World Famous Since 1922



## 2,470 SF OFFICE SPACE | 3,050 SF RETAIL/RESTAURANT SPACE

### DEMOGRAPHICS

	1 mile	3 miles	5 miles
Estimated Population	19,590	118,018	273,408
Avg. Household Income	\$92,521	\$88,943	\$75,449

- One of Kansas City's best retail locations
- Join over 150 exciting national, regional, and local retailers
- 2012 average sales volume of \$550.00+ per sq ft
- Major building signage available
- Possible roof expansion for retail, fitness, or hotel



CLICK HERE TO VIEW MORE LISTING INFORMATION

For More Information Contact:

Exclusive Agents

DAVID BLOCK | 816.412.7400 | [dblock@blockandco.com](mailto:dblock@blockandco.com)

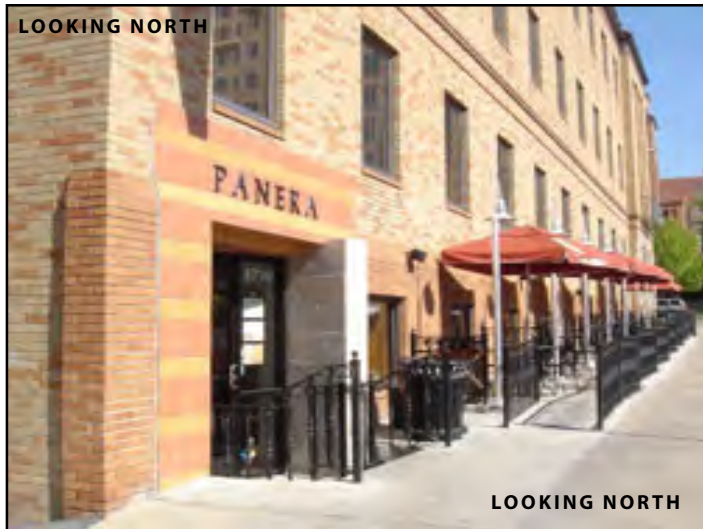
ALEX BLOCK | 816.412.7373 | [ablock@blockandco.com](mailto:ablock@blockandco.com)

MAX KOSOGLAD | 816.412.7363 | [mkosoglad@blockandco.com](mailto:mkosoglad@blockandco.com)





## EXTERIOR PHOTOS







# SKELLY BUILDING ON THE COUNTRY CLUB PLAZA

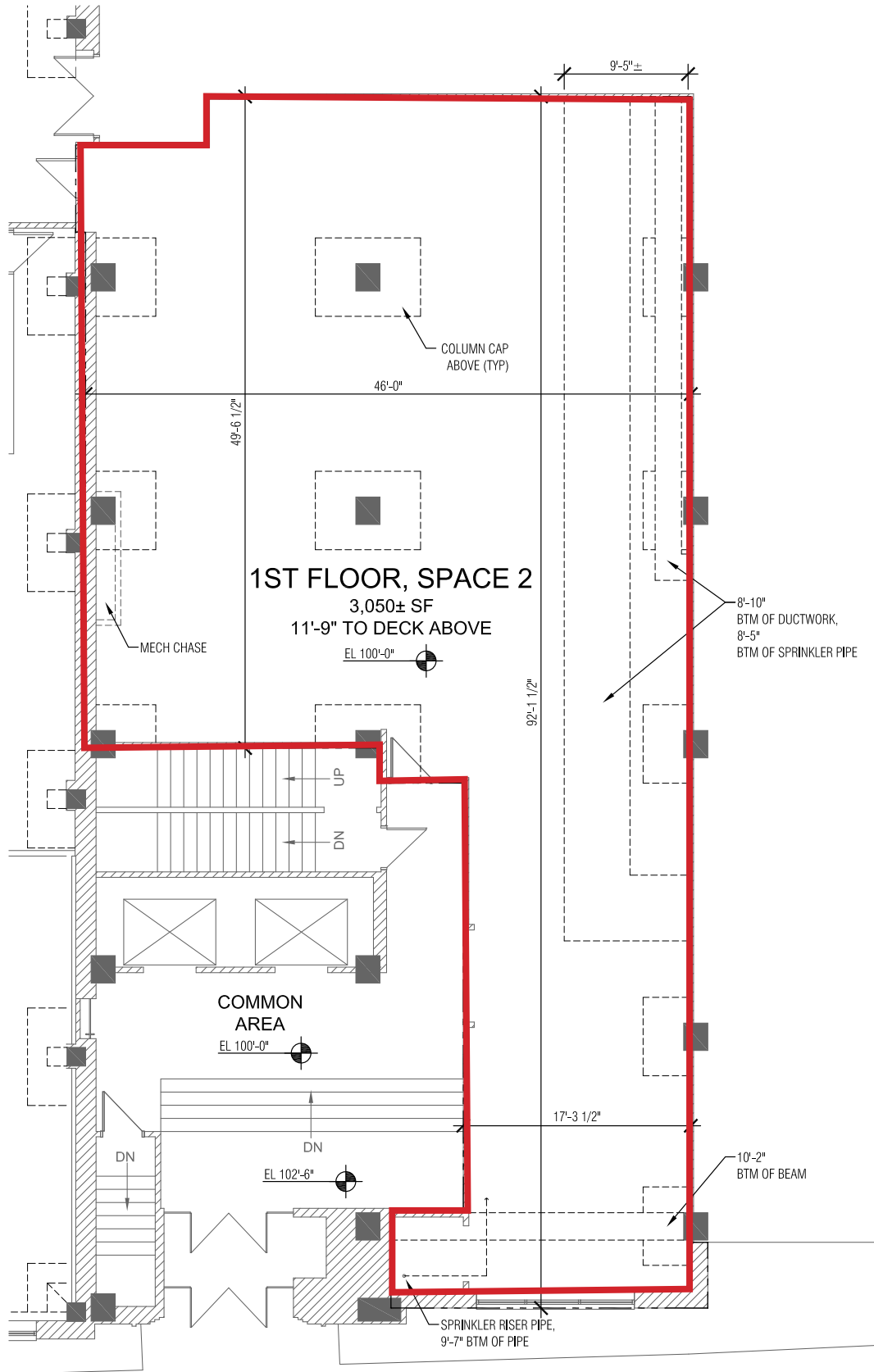
Kansas City's High End Retail, Restaurant, Hotel, Office,  
and Entertainment District - World Famous Since 1922

## AERIAL PHOTOS

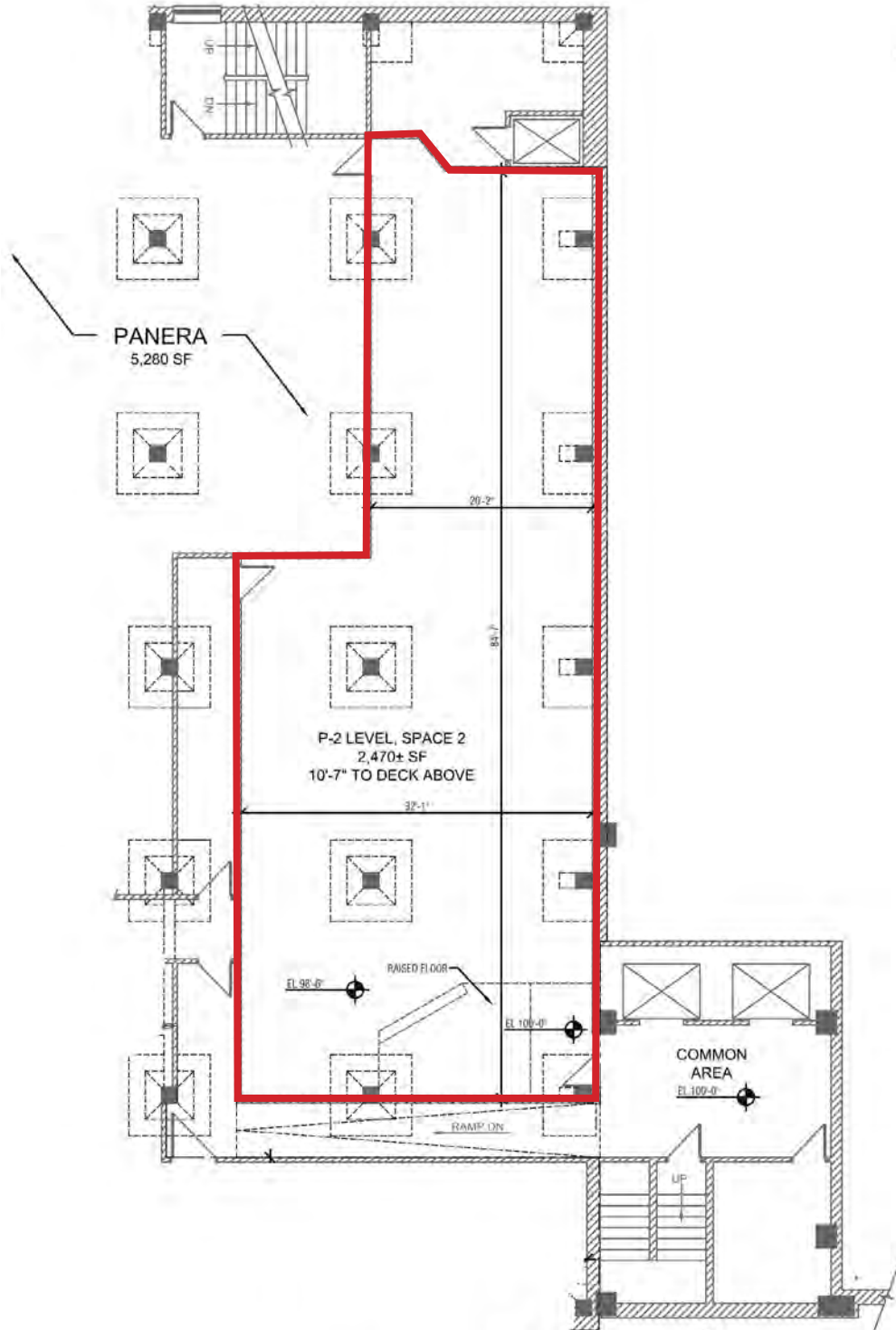





**RETAIL/RESTAURANT SPACE PLAN**



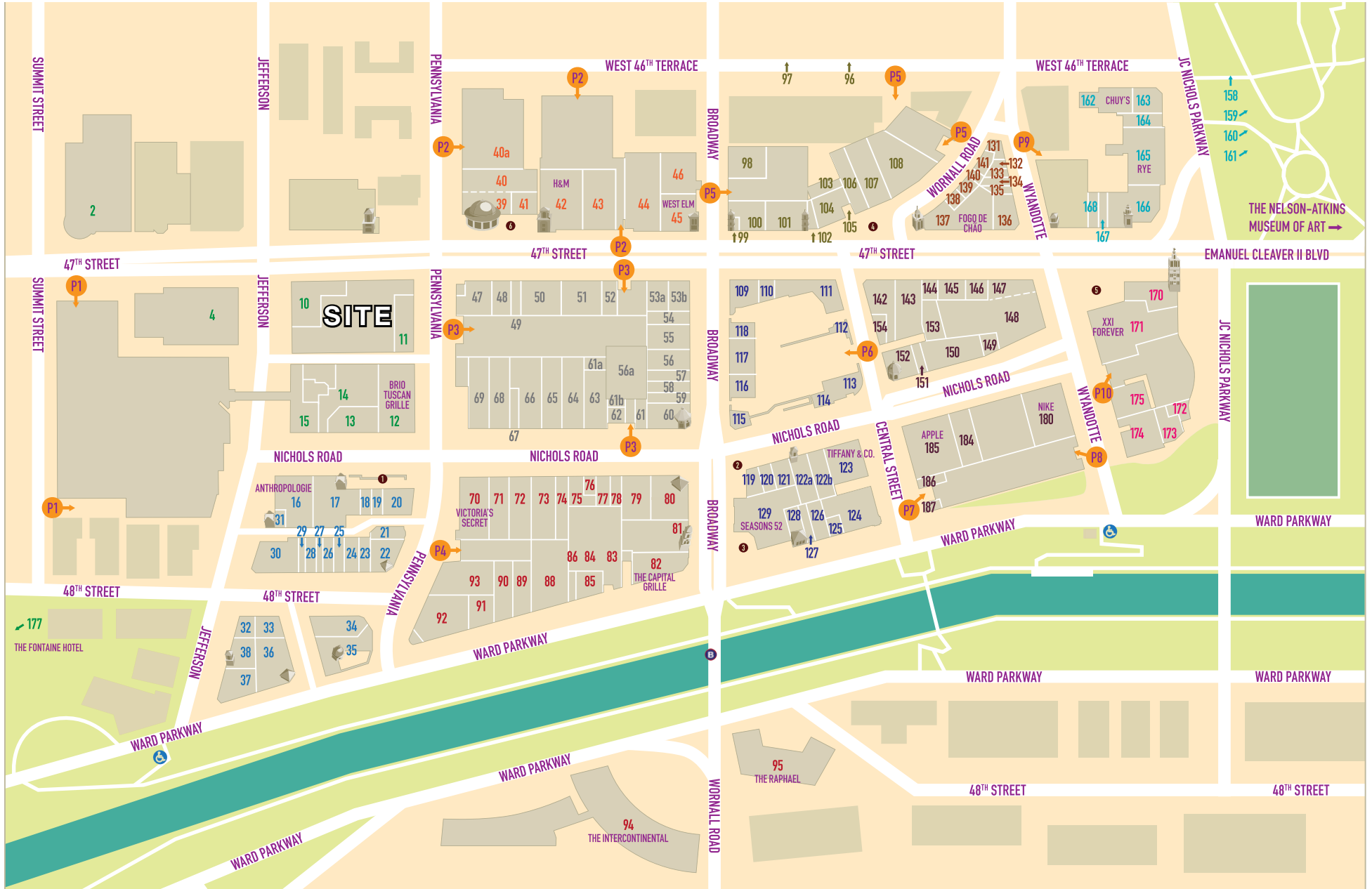
OFFICE SPACE PLAN



P-2 LEVEL   
BLOCK & COMPANY - SKELLY BUILDING  
605 WEST 47TH STREET KANSAS CITY, MISSOURI



# COUNTRY CLUB PLAZA



**NEW TO THE PLAZA**

66	Altar'd State	865-6100
21	Amazing Lash Studio	338-0340
143	Array ◉ ✕	859-5404
167	Auntie Anne's / Cinnabon	216-1087
121	Casper ✕	Coming Soon
149	Cupcakin Bakery ✕	Coming Soon
144	doob 3D ✕	913-204-1234
99	Green Grove ◉ ✕	833-425-5223
68	Indochino ✕	855-334-0788
184	Marine Layer ✕	569-0276
43	Old Navy	931-4439
142	Shake Shack ✕	708-4030
92	True Food Kitchen ✕	931-4947
152	UNTUCKit ✕	216-1455

**WOMEN'S APPAREL / ACCESSORIES**

66	Altar'd State	865-6100
16	Anthropologie	531-4429
143	Array ◉ ✕	859-5404
51	Athleta ✕	753-7557
63	BLDWN Market ◉	913-312-2377
117	Chico's	931-3777
77	Eileen Fisher ✕	531-5566
145	Evereve	569-2253
58	Francesca's Collections	531-5141
67	Free People ✕	531-2669
120	kate spade new york ✕	756-5244
122a	Madewell ✕	756-5365
184	Marine Layer ✕	569-0276
119	Michael Kors ✕	531-2038
52	Nani Nalu ✕	931-7946
128	Ricca Sposa Bridal ✕	913-709-4615
79	Soft Surroundings ✕	756-5040
20	Terrasi Living & Scandia Home ◉ ✕	753-4144
70	Victoria's Secret	531-2650
109	White House Black Market	960-0580

**MEN'S & WOMEN'S APPAREL / ACCESSORIES**

143	Array ◉ ✕	859-5404
63	BLDWN Market ◉	913-312-2377
39	Banana Republic	753-1157
53a	Charlie Hustle ◉ ✕	541-4387
73	Express	753-7151
42	H&M	960-1030
68	Indochino ✕	855-334-0788
17	J.Crew	753-9744
118	J.McLaughlin ✕	960-3754
54	Lucky Brand Jeans ✕	753-5823
80	lululemon	531-2894
184	Marine Layer ✕	569-0276
50	Moosejaw ✕	832-4493
180	Nike Kansas City ✕	931-4454
43	Old Navy	931-4439
104	The North Face ✕	756-0300
34	Pinstripes ◉	531-3355
91	Rally House Kansas City ◉	756-5409
101	Tommy Bahama ✕	531-8688
152	UNTUCKit ✕	216-1455
13	Urban Outfitters ✕	753-8500
48	Vans	531-2058
53	vineyard vines ✕	800-5128
171	XXI Forever	753-7473

**ACCESSORIES / OPTICAL / LUGGAGE**

76	Barton Perreira ✕	531-2104
146	Brighton Collectibles ✕	531-8138
100	The Coach Store	561-1771
120	kate spade new york ✕	756-5244
119	Michael Kors ✕	531-2038
26	Milan Optique ◉ ✕	569-2700
74	Sunglass Hut	531-4340
57	Tumi ✕	753-4306
122b	Warby Parker ✕	298-0660

**SHOES**

59	Aldo	531-4790
39	Banana Republic	753-1157
146	Brighton Collectibles ✕	531-8138
120	kate spade new york ✕	756-5244
119	Michael Kors ✕	531-2038
50	Moosejaw ✕	832-4493
180	Nike Kansas City ✕	931-4454
131	Renner's Boots, Shoes & Repair ◉ ✕	561-0740
75	Sperry Top-Sider ✕	960-6857
48	Vans	531-2058
106	The Walking Co.	561-0092

**CHILDREN'S APPAREL**

53a	Charlie Hustle ◉ ✕	541-4387
42	H&M	960-1030
17	J.Crew Crewcuts	753-9744
180	Nike Kansas City ✕	931-4454
43	Old Navy	931-4439
91	Rally House Kansas City ◉	756-5409
53b	vineyard vines ✕	800-5128
171	XXI Forever	753-7473

**GIFTS / SPECIALTY STORES**

185	Apple	448-9200
110	The Art of Shaving ✕	659-9859
44	Barnes & Noble Booksellers	753-1313
72	Bath & Body Works	561-1613
88	Beauty Brands ◉	753-8822
78	bluemercury ✕	756-5200
121	Casper ✕	Coming Soon
85	Diebel's Sportsmens Gallery ◉	931-2988
144	doob 3D ✕	913-204-1234
99	Green Grove ◉ ✕	833-425-5223
55	HMK ◉ ✕	931-4555
68	Indochino ✕	855-334-0788
49	IT'SUGAR ✕	759-8666
120	kate spade new york ✕	756-5244
80	lululemon	531-2894
115	MAC Cosmetics ✕	561-1075
107	Made in KC Marketplace ◉	718-0806
50	Moosejaw ✕	832-4493
180	Nike Kansas City ✕	931-4454
104	The North Face ✕	756-0300
33	Paper Source	753-2777
91	Rally House Kansas City ◉	756-5409
148	RE: Emporium ◉	913-274-8321
128	Ricca Sposa Bridal ✕	913-709-4615
64	Sephora	753-5996
56	Sprint	521-6300
65	Sur La Table ✕	756-5400
20	Terrasi Living & Scandia Home ◉ ✕	753-4144

25	Tervis ✕	491-8052
69	Tesla	627-4836
23	Three Dog Bakery ◉ ✕	753-3647
123	Tiffany & Co. ✕	531-7676
18	VOM FASS ✕	569-6347
45	west elm ✕	960-3765

**HOME / ART / ANTIQUES**

16	Anthropologie	531-4429
107	Made in KC Marketplace ◉	718-0806
148	RE: Emporium ◉	913-274-8321
79	Soft Surroundings ✕	756-5040
65	Sur La Table ✕	756-5400
20	Terrasi Living & Scandia Home ◉ ✕	753-4144
13	Urban Outfitters ✕	753-8500
45	west elm ✕	960-3765

**JEWELRY**

60	Helzberg Diamonds ◉	531-4100
61	Kendra Scott	448-8323
123	Tiffany & Co. ✕	531-7676
150	Tivol, Inc. ◉	531-5800
32	Vinca Fine Jewelry ◉ ✕	531-5591

**PERSONAL / PROFESSIONAL SERVICES**

21	Amazing Lash Studio	338-0340
110	The Art of Shaving ✕	659-9859
88	Beauty Brands ◉	753-8822
78	bluemercury ✕	756-5200
175	CorePower Yoga	897-0678
84	Country Club Carwash ◉ ✕	365-2641
61b	Country Club Plaza Public Safety	753-7973
139	Larissa's Tailor Shop ◉ ✕	753-1209
163	Massage Envy	994-3689
56a	Mojo Cycling Studio ◉	561-1995
27	Parlor: A Beauty Bar ◉ ✕	561-1302
134	Plaza Hair Design ◉ ✕	753-2936
133	Plaza Nails ◉ ✕	701-6616
114	Plaza Shoe Shine ◉ ✕	
131	Renner's Boots, Shoes & Repair ◉ ✕	561-0740
141	Salon Sophia ◉ ✕	756-0024
56	Sprint	521-6300
4	Unity Temple	561-4466
186	The UPS Store	561-7411
122b	Warby Parker ✕	298-0660

**RESTAURANTS**

12	Brio Tuscan Grille ✕	561-5888
105	Buca di Beppo ✕	931-6548
7	The Capital Grille ✕	531-8345
170	The Cheesecake Factory	960-1919
162	Chuy's	931-2783
111	Classic Cup Café ◉ ✕	753-1840
46	Cooper's Hawk Winery & Restaurant ✕	531-1500
174	Fiorella's Jack Stack Barbecue ◉	531-7427
137	Fogo de Chão ✕	931-7700
172	Fred P. Ott's ◉	753-2878
35	Gram & Dun ◉ ✕	389-2900
36	The Granfalloon Restaurant & Bar ◉ ✕	753-7850
99	Green Grove ◉ ✕	833-425-5223
60	Helzberg Diamonds ◉	531-4100
55	HMK ◉ ✕	931-4555
93	Hogshead Kansas City ◉ ✕	321-2929
139	Larissa's Tailor Shop ◉ ✕	753-1209
107	Made in KC Marketplace ◉	718-0806
26	Milan Optique ◉ ✕	569-2700
56a	Mojo Cycling Studio ◉ ✕	561-1995
22	O'Dowd's Gastrobar ◉ ✕	561-2700
38	The Oliver ◉ ✕	384-2500
62	Panache Chocolatier ◉ ✕	931-3191
37	Parkway Social Kitchen ◉ ✕	214-5616
27	Parlor: A Beauty Bar ◉ ✕	561-1302
34	Pinstripes ◉	531-3355

22	O'Dowd's Gastrobar ◉ ✕	561-2700
38	The Oliver ◉ ✕	384-2500
11	Panera Bread Bakery Café	931-8181
37	Parkway Social Kitchen ◉ ✕	214-5616
166	P.F. Chang's China Bistro ✕	931-9988
116	Potbelly Sandwich Shop ✕	332-4953
165	Rye ◉	541-3382
129	Seasons 52 ✕	531-0052
142	Shake Shack ✕	807-4030
136	L.Loft ◉	541-4849
92	True Food Kitchen ✕	931-4947
30	Zócalo Mexican Cuisine ◉ ✕	756-5555
173	Zoës Kitchen	531-2044

**SPECIALTY FOOD & WINE**

167	Auntie Anne's / Cinnabon	216-1087
44	Barnes and Noble Café	753-1313
24	The Better Cheddar ◉	561-8204
168	Cold Stone Creamery	531-8200
138	Cupcake A La Mode ◉	960-1911
49	IT'SUGAR ✕	759-8666
31	Kaldi's Coffee	931-7477
102	Kaldi's Coffee	931-7577
107	Made in KC Marketplace ◉	718-0806
62	Panache Chocolatier ◉ ✕	931-3191
19	Southern Charm Gelato ◉ ✕	214-8425
113	Starbucks	753-4246
112	Topsy's Popcorn Shoppe ◉	753-7373
18	VOM FASS ✕	569-6347
187	The Waffle Bar ◉ ✕	832-8348

**FINANCIAL INSTITUTIONS**

47	Bank of America (ATM)	714-7010
61a	Country Club Bank (ATM) & Drive-thru	931-4060

**LOCAL**

143	Array ◉ ✕	859-5404
76	Barton Perreira ✕ ◉	531-2104
88	Beauty Brands ◉	753-8822
24	The Better Cheddar ◉	561-8204
63	BLDWN Market ◉	913-312-2377
53a	Charlie Hustle ◉ ✕	541-4387
111	Classic Cup Café ◉ ✕	753-1840
138	Cupcake A La Mode ◉	960-1911
149	Cupcakin Bakery ◉	Coming Soon
85	Diebel's Sportsmens Gallery ◉	931-2988
174	Fiorella's Jack Stack Barbecue ◉	531-7427
172	Fred P. Ott's ◉	753-2878
35	Gram & Dun ◉ ✕	389-2900
36	The Granfalloon Restaurant & Bar ◉ ✕	753-7850
99	Green Grove ◉ ✕	833-425-5223
60	Helzberg Diamonds ◉	531-4100
55	HMK ◉ ✕	931-4555
93	Hogshead Kansas City ◉ ✕	321-2929
139	Larissa's Tailor Shop ◉ ✕	753-1209
107	Made in KC Marketplace ◉	718-0806
26	Milan Optique ◉ ✕	569-2700
56a	Mojo Cycling Studio ◉ ✕	561-1995
22	O'Dowd's Gastrobar ◉ ✕	561-2700
38	The Oliver ◉ ✕	384-2500
62	Panache Chocolatier ◉ ✕	931-3191
37	Parkway Social Kitchen ◉ ✕	214-5616
27	Parlor: A Beauty Bar ◉ ✕	561-1302
34	Pinstripes ◉	531-3355

134	Plaza Hair Design ◉ ✕	753-2936
133	Plaza Nails ◉ ✕	701-6616
91	Rally House Kansas City ◉	756-5409
131	Renner's Boots, Shoes & Repair ◉ ✕	561-0740
148	RE: Emporium ◉	913-274-8321
128	Ricca Sposa Bridal ◉ ✕	913-709-4615
165	Rye ◉	541-3382
141	Salon Sophia ◉ ✕	756-0024
19	Southern Charm Gelato ◉ ✕	214-8425
56	Sprint ◉	521-6300
136	L.Loft ◉	541-4849
20	Terrasi Living & Scandia Home ◉ ✕	753-4144
23	Three Dog Bakery ◉ ✕	753-3647
150	Tivol, Inc. ◉	531-5800
112	Topsy's Popcorn Shoppe ◉	753-7373
32	Vinca Fine Jewelry ◉ ✕	531-5591
187	The Waffle Bar ◉ ✕	832-8348
30	Zócalo Mexican Cuisine ◉ ✕	756-5555

**HOTELS**

158	Courtyard by Marriott 4600 J.C. Nichols Pkwy.	285-9755
96	Embassy Suites 220 West 43rd St.	756-1720
177	The Fontaine Hotel ✕ 901 West 48th St.	753-8800
1	Hampton Inn & Suites 46th & Summit	448-4600
161	Holiday Inn at the Plaza 45th & Main	753-7400
94	The Intercontinental Hotel ✕ Ward Parkway & Wornall	756-1500
160	Kansas City Marriott 45th & Main	531-3000
95	The Raphael Hotel ◉ ✕ Wornall & Ward Parkway	756-3800
97	Residence Inn by Marriott 46th Terr. & Broadway	753-0033
2	Sheraton Suites 770 West 47th St.	931-4400
159	Southmoreland Inn ◉ ✕ 116 E. 46th St.	531-7979

**COURTYARDS**

1	Penguin	4	Neptune
2	Mermaid	5	Chandler
3	Pomona	6	Valencia

**PARKING**

Ⓟ	Seville Garage	Ⓟ	Plaza Central Garage
Ⓟ	Valencia Place Garage	Ⓟ	Plaza 211 West Garage
Ⓟ	Granada Garage	Ⓟ	Plaza 211 East Garage
Ⓟ	Time Building Garage	Ⓟ	Mill Creek Garage
Ⓟ	Balcony Garage	Ⓟ	Giralda Garage

**MISCELLANEOUS**

🗺️	Brush Creek Handicapped Access
🗺️	Kansas City Original
✕	Exclusive to the Plaza

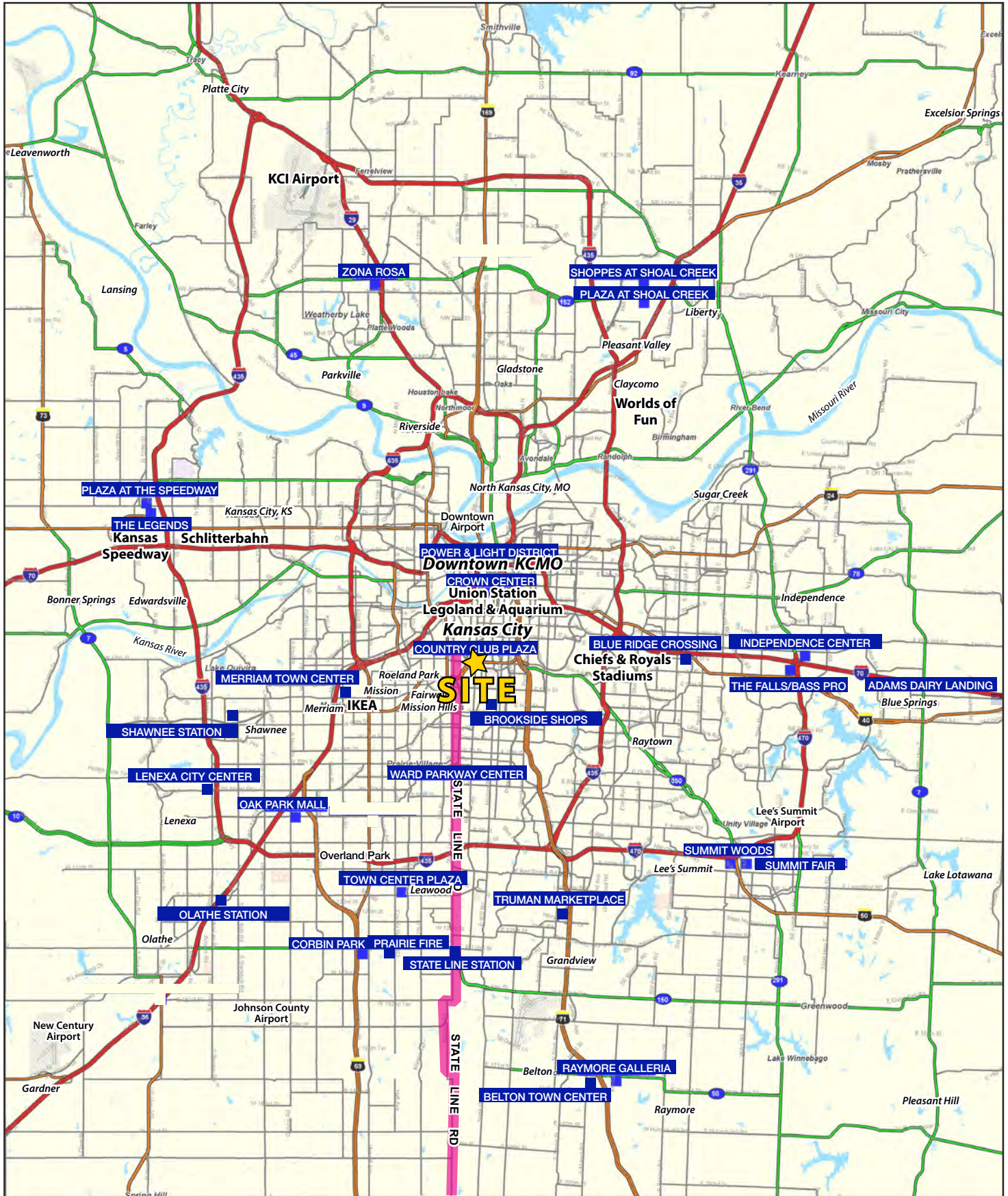
All area codes are (816) unless noted otherwise.





# SKELLY BUILDING ON THE COUNTRY CLUB PLAZA

Kansas City's High End Retail, Restaurant, Hotel, Office, and Entertainment District - World Famous Since 1922

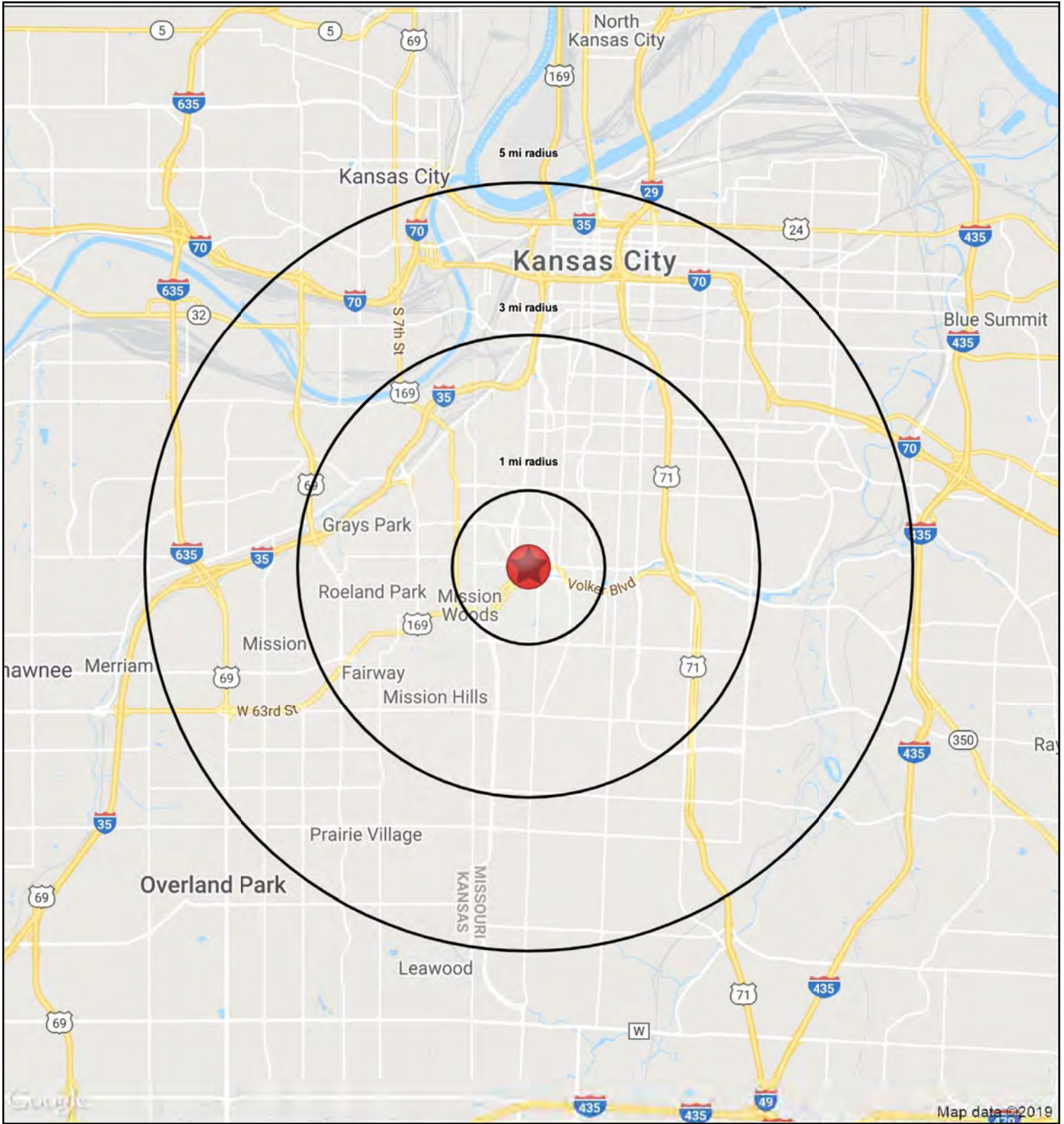






# SKELLY BUILDING ON THE COUNTRY CLUB PLAZA

Kansas City's High End Retail, Restaurant, Hotel, Office, and Entertainment District - World Famous Since 1922





# SKELLY BUILDING ON THE COUNTRY CLUB PLAZA

Kansas City's High End Retail, Restaurant, Hotel, Office,  
and Entertainment District - World Famous Since 1922

HS1

605 W. 47th Street		1 mi radius	3 mi radius	5 mi radius
Kansas City, MO 64112				
POPULATION	2019 Estimated Population	19,590	118,018	273,408
	2024 Projected Population	20,238	126,159	291,154
	2010 Census Population	18,151	111,022	256,888
	2000 Census Population	18,971	123,353	278,377
	Projected Annual Growth 2019 to 2024	0.7%	1.4%	1.3%
	Historical Annual Growth 2000 to 2019	0.2%	-0.2%	-
	2019 Median Age	34.6	36.0	35.7
HOUSEHOLDS	2019 Estimated Households	12,151	58,211	128,672
	2024 Projected Households	12,414	61,454	135,728
	2010 Census Households	10,668	51,620	113,953
	2000 Census Households	11,488	56,570	120,207
	Projected Annual Growth 2019 to 2024	0.4%	1.1%	1.1%
	Historical Annual Growth 2000 to 2019	0.3%	0.2%	0.4%
RACE AND ETHNICITY	2019 Estimated White	79.5%	57.5%	54.1%
	2019 Estimated Black or African American	7.5%	30.6%	32.6%
	2019 Estimated Asian or Pacific Islander	6.1%	3.2%	3.0%
	2019 Estimated American Indian or Native Alaskan	0.4%	0.5%	0.5%
	2019 Estimated Other Races	6.3%	8.1%	9.8%
	2019 Estimated Hispanic	9.1%	11.0%	14.1%
INCOME	2019 Estimated Average Household Income	\$92,521	\$88,943	\$75,449
	2019 Estimated Median Household Income	\$69,846	\$66,878	\$59,796
	2019 Estimated Per Capita Income	\$57,536	\$44,004	\$35,708
EDUCATION (AGE 25+)	2019 Estimated Elementary (Grade Level 0 to 8)	2.0%	2.7%	4.1%
	2019 Estimated Some High School (Grade Level 9 to 11)	2.9%	6.6%	8.0%
	2019 Estimated High School Graduate	10.3%	19.6%	22.6%
	2019 Estimated Some College	13.3%	17.5%	19.1%
	2019 Estimated Associates Degree Only	4.7%	5.5%	6.1%
	2019 Estimated Bachelors Degree Only	36.0%	27.1%	23.6%
	2019 Estimated Graduate Degree	30.9%	21.0%	16.5%
BUSINESS	2019 Estimated Total Businesses	2,612	8,285	17,293
	2019 Estimated Total Employees	38,272	121,056	272,580
	2019 Estimated Employee Population per Business	14.7	14.6	15.8
	2019 Estimated Residential Population per Business	7.5	14.2	15.8







# SKELLY BUILDING ON THE COUNTRY CLUB PLAZA

Kansas City's High End Retail, Restaurant, Hotel, Office,  
and Entertainment District - World Famous Since 1922

HS1

605 W. 47th Street		5 mi radius	10 mi radius	15 mi radius
Kansas City, MO 64112				
POPULATION	2019 Estimated Population	273,408	762,043	1,334,996
	2024 Projected Population	291,154	802,265	1,406,570
	2010 Census Population	256,888	731,100	1,262,532
	2000 Census Population	278,377	764,295	1,207,319
	Projected Annual Growth 2019 to 2024	1.3%	1.1%	1.1%
	Historical Annual Growth 2000 to 2019	-	-	0.6%
	2019 Median Age	35.7	37.4	37.7
HOUSEHOLDS	2019 Estimated Households	128,672	337,459	570,064
	2024 Projected Households	135,728	352,885	594,695
	2010 Census Households	113,953	308,463	516,853
	2000 Census Households	120,207	320,205	490,850
	Projected Annual Growth 2019 to 2024	1.1%	0.9%	0.9%
	Historical Annual Growth 2000 to 2019	0.4%	0.3%	0.8%
RACE AND ETHNICITY	2019 Estimated White	54.1%	61.6%	69.3%
	2019 Estimated Black or African American	32.6%	23.8%	17.8%
	2019 Estimated Asian or Pacific Islander	3.0%	3.7%	4.1%
	2019 Estimated American Indian or Native Alaskan	0.5%	0.5%	0.5%
	2019 Estimated Other Races	9.8%	10.4%	8.3%
	2019 Estimated Hispanic	14.1%	14.7%	11.4%
INCOME	2019 Estimated Average Household Income	\$75,449	\$74,354	\$84,145
	2019 Estimated Median Household Income	\$59,796	\$59,799	\$69,249
	2019 Estimated Per Capita Income	\$35,708	\$33,053	\$36,024
EDUCATION (AGE 25+)	2019 Estimated Elementary (Grade Level 0 to 8)	4.1%	4.4%	3.3%
	2019 Estimated Some High School (Grade Level 9 to 11)	8.0%	7.2%	5.7%
	2019 Estimated High School Graduate	22.6%	25.3%	23.8%
	2019 Estimated Some College	19.1%	21.3%	21.1%
	2019 Estimated Associates Degree Only	6.1%	7.1%	7.5%
	2019 Estimated Bachelors Degree Only	23.6%	21.5%	23.9%
	2019 Estimated Graduate Degree	16.5%	13.3%	14.8%
BUSINESS	2019 Estimated Total Businesses	17,293	40,851	62,007
	2019 Estimated Total Employees	272,580	608,375	899,278
	2019 Estimated Employee Population per Business	15.8	14.9	14.5
	2019 Estimated Residential Population per Business	15.8	18.7	21.5





# SKELLY BUILDING ON THE COUNTRY CLUB PLAZA

Kansas City's High End Retail, Restaurant, Hotel, Office, and Entertainment District - World Famous Since 1922

## AERIAL

