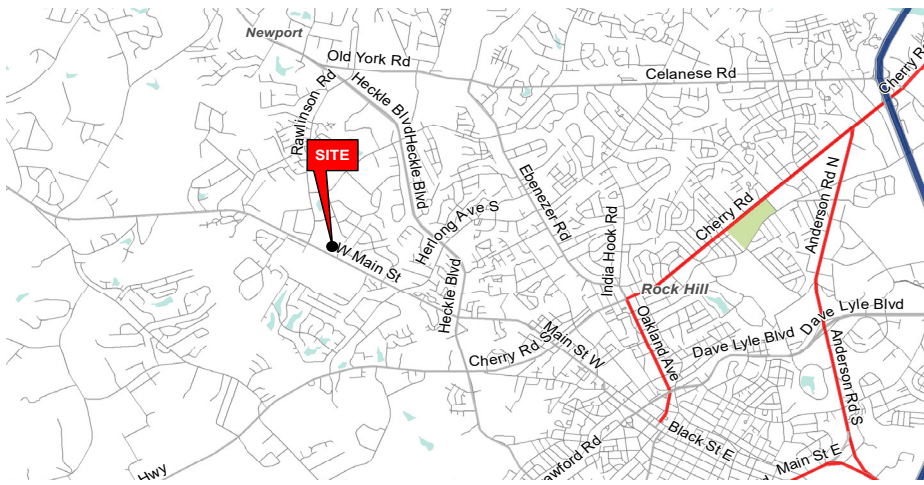




# RAWLINSON PLAZA - RETAIL SPACE AVAILABLE

2550 W. MAIN STREET | ROCK HILL, SC 29732



## PROPERTY INFORMATION

SHOPPING CENTER GLA:	34,642 SF
AVAILABLE SPACE:	1,570 SF - 13,542 SF
LEASE RATE:	PLEASE CALL
TICAM:	\$3.60 / SF

## PROPERTY HIGHLIGHTS

- High Visibility on West Main Street (SC Hwy 5), across from Northwestern High School and Rawlinson Middle School
- Close proximity to York Road Elementary School
- Combined cumulative enrollment = approx. 3,000 students
- AM Side of W. Main Street.
- Four access points including access to traffic signal

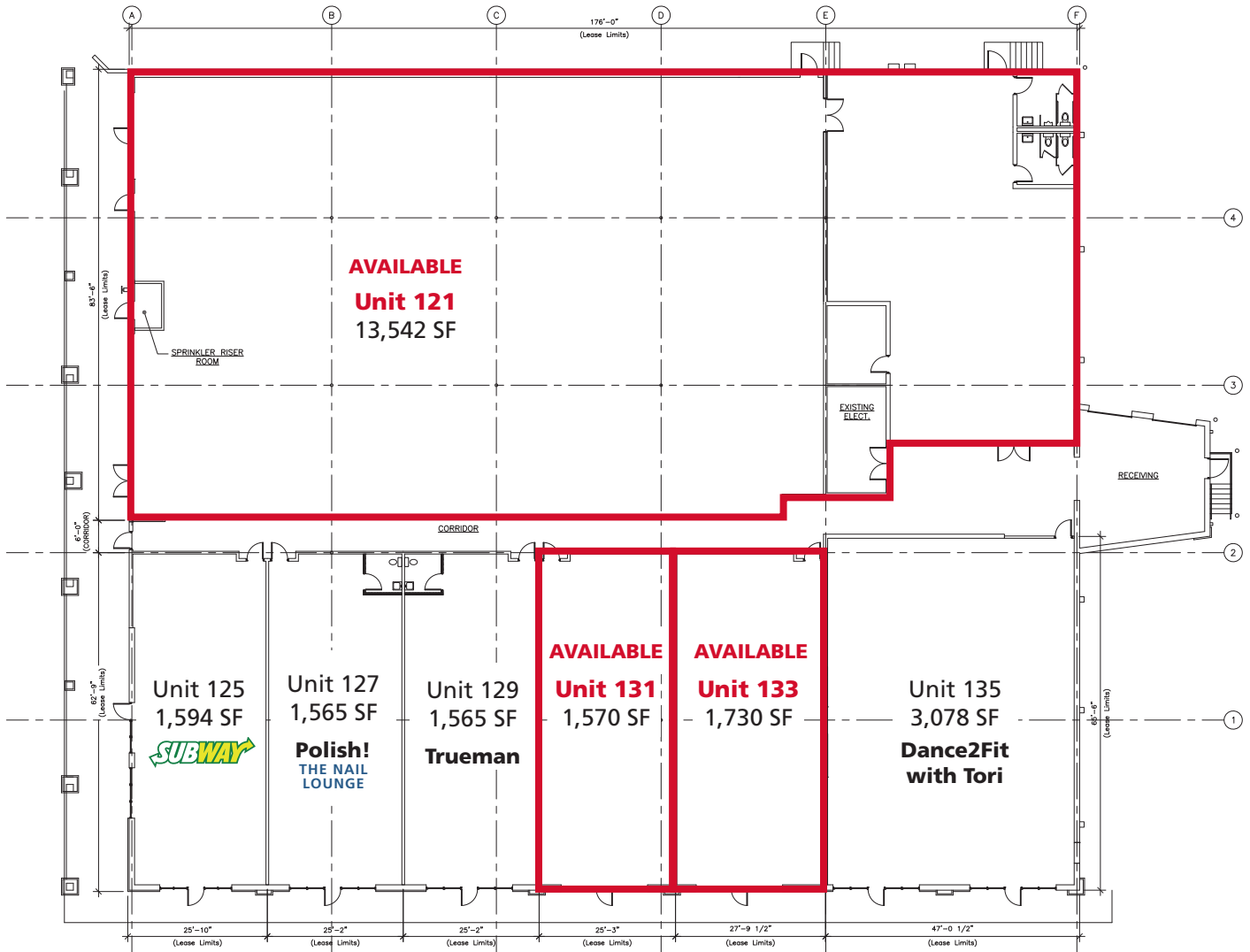
## DEMOGRAPHICS (2018)

	1 MILE	3 MILE	5 MILE
POPULATION	4,389	32,863	84,202
AVERAGE HH INCOME	\$107,687	\$77,590	\$71,771
MEDIAN HH INCOME	\$77,333	\$61,415	\$56,477
BUSINESS ESTABLISHMENTS	114	1,331	3,082
DAYTIME EMPLOYMENT	2,210	16,872	34,466

© 2020 The Providence Group. All rights reserved. The information above has been obtained by sources deemed reliable. While we do not doubt its accuracy, we have not verified it and make no guarantee, warranty, or representation of it. It is your responsibility to independently confirm its accuracy and completeness. You and your advisors should conduct a careful, independent investigation of the property to determine to your satisfaction the suitability of the property for your needs.

# RAWLINSON PLAZA - RETAIL SPACE AVAILABLE

2550 W. MAIN STREET | ROCK HILL, SC 29732



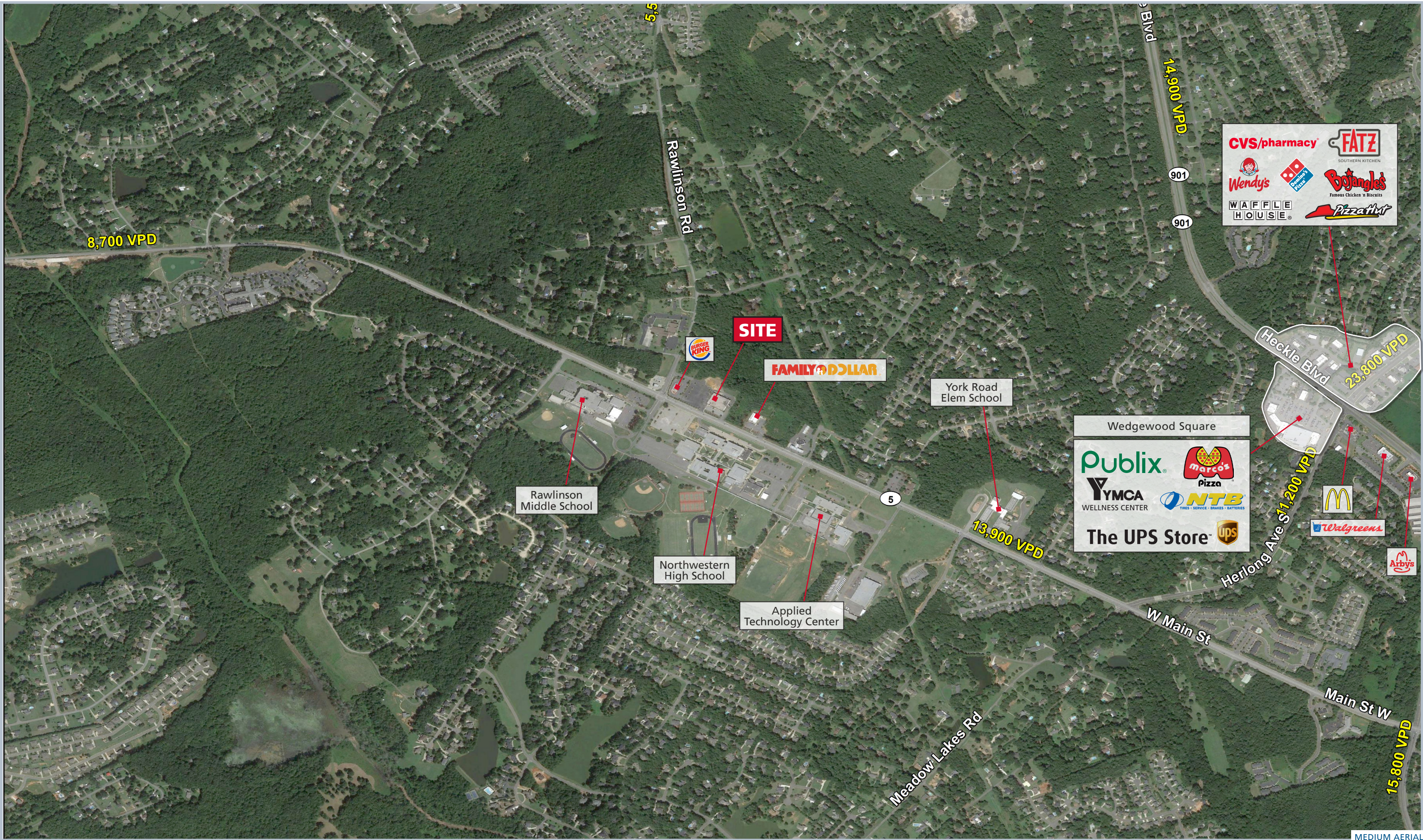
## TRAFFIC COUNTS 2018 (SCDOT)

- 13,900 VPD on W. Main Street (just east of site)



© 2020 The Providence Group. All rights reserved. The information above has been obtained by sources deemed reliable. While we do not doubt its accuracy, we have not verified it and make no guarantee, warranty, or representation of it. It is your responsibility to independently confirm its accuracy and completeness. You and your advisors should conduct a careful, independent investigation of the property to determine to your satisfaction the suitability of the property for your needs.





MEDIUM AERIAL