



Clover Park Shops

11120 Gravelly Lake Drive SW, Lakewood, WA 98499

Join quality, long-term tenants at the Clover Park Shops in Lakewood. The building features directory signage on Gravelly Lake Drive, an ample, lighted parking lot, storefront glass, shared waiting areas, and secure front and back entrances that are accessible by keypad entry after hours. Suite 7 is on the second floor, is 460sf, and features an open reception area with re-light window, two rooms partially separated by pony walls, and a large, L-shaped storage closet.

Property Highlights

- Second floor unit
- Storefront glass
- Directory signage
- Ample parking in lighted lot
- Additional large parking lot in rear
- Suite 7: Approx. 460sf office
- Rent: \$770.00 per month gross
- Tenant provides internet service and phone

DISCLAIMER: The above information has been secured from sources believed to be reliable, however, no representations are made to its accuracy. Prospective tenants or buyers should consult their professional advisors and conduct their own independent investigation. Properties are subject to change in price and/or availability without notice.



11120 Gravelly Lake Dr SW Ste 2
Lakewood, Washington 98499
johnson-commercial.com

Margot Johnson
margot@johnson-commercial.com
(253) 209-9998

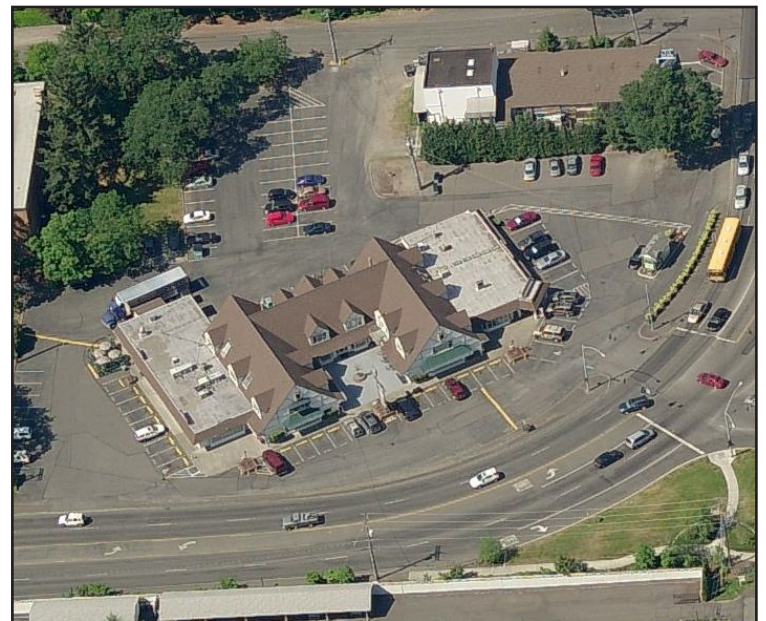
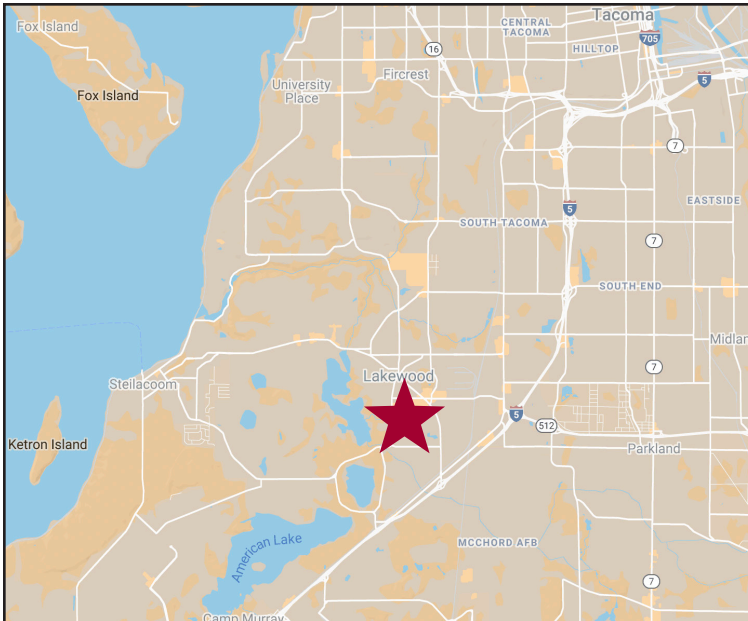


Retail/Office Space for Lease

INTERIOR PHOTOS



MAP & AERIAL PHOTO



DEMOGRAPHICS

Population	1 Mile	3 Miles	5 Miles
	7,518	78,122	204,390
Median Household Income	1 Mile	3 Miles	5 Miles
	\$58,442	\$54,734	\$59,961



FLOOR PLAN - SUITE 7

