

6396 HIGHWAY 51 N

Horn Lake, MS 38637

EXECUTIVE SUMMARY



PROPERTY HIGHLIGHTS

- 10,216 SF freestanding building on 1.07 acres For Sale on the northeast corner of Highway 51 and Kuykendall Lane
- Multiple access points and abundant parking
- Located in a high growth area just west of Interstate 55 in the Southaven-Horn Lake trade area
- Traffic Count: Highway 51 N 20,000 AADT

DEMOGRAPHICS

| | 1 MILE | 3 MILES | 5 MILES |
|--------------------|----------|----------|----------|
| Population | 3,448 | 52,725 | 107,210 |
| Daytime Population | 5,892 | 54,891 | 93,580 |
| Households | 1,324 | 19,311 | 38,510 |
| Average HH Income | \$59,684 | \$63,076 | \$66,544 |

EXCLUSIVE AGENT(S)

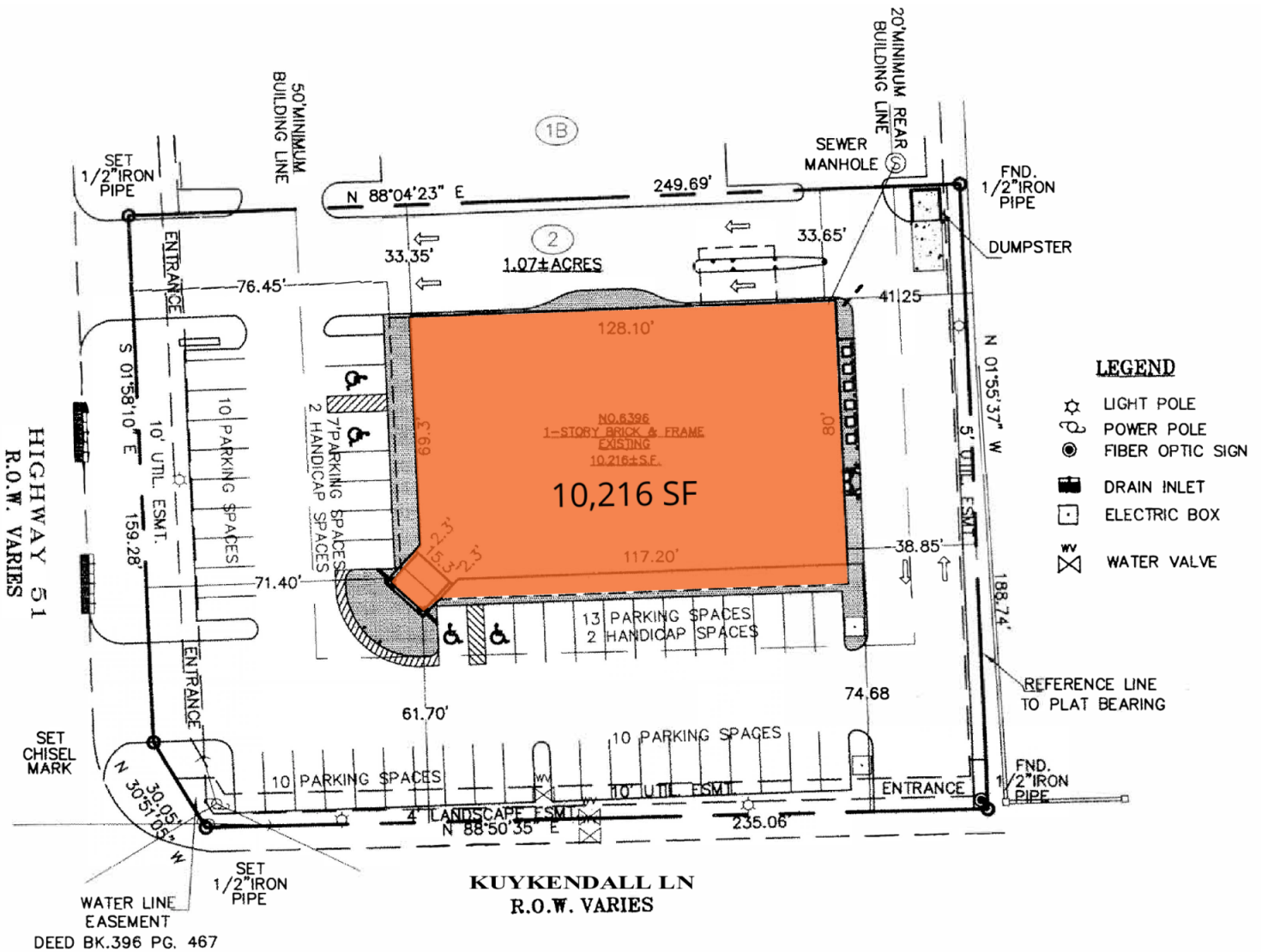
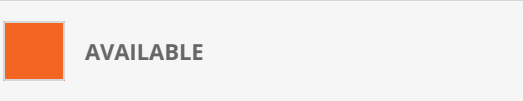
ROBERT SLOAN • robert.sloan@tscg.com • 901.334.5703

DUSTIN JONES • dustin.jones@tscg.com • 901.334.5706

6396 HIGHWAY 51 N

Horn Lake, MS 38637

SITE PLAN



EXCLUSIVE AGENT(S)

ROBERT SLOAN • robert.sloan@tscg.com • 901.334.5703

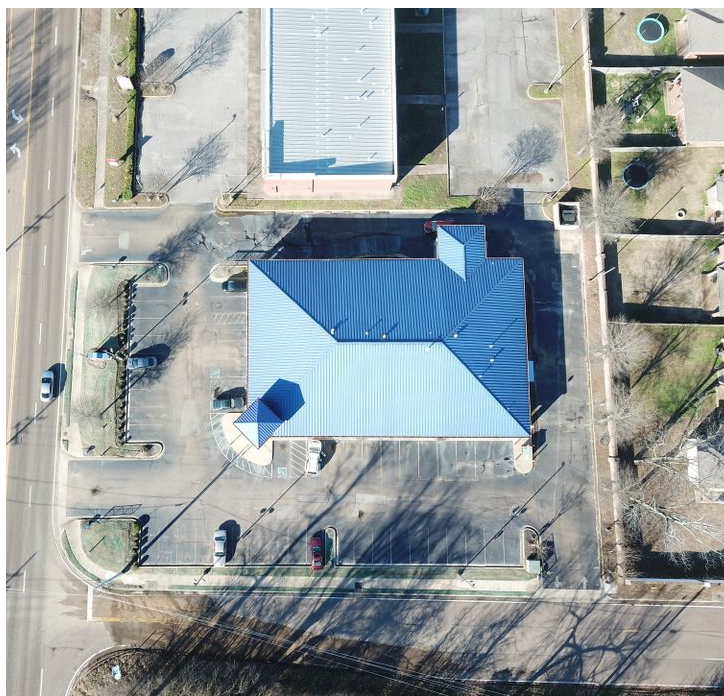
DUSTIN JONES • dustin.jones@tscg.com • 901.334.5706



6396 HIGHWAY 51 N

Horn Lake, MS 38637

ADDITIONAL PHOTOS



EXCLUSIVE AGENT(S)

ROBERT SLOAN • robert.sloan@tscg.com • 901.334.5703

DUSTIN JONES • dustin.jones@tscg.com • 901.334.5706