

+/- 11.5 ACRES AVAILABLE IN ST. AMANT

SWALLOW BAYOU RD., SAINT AMANT, LA 70774

+/- 11.5 ACRES | \$375,705

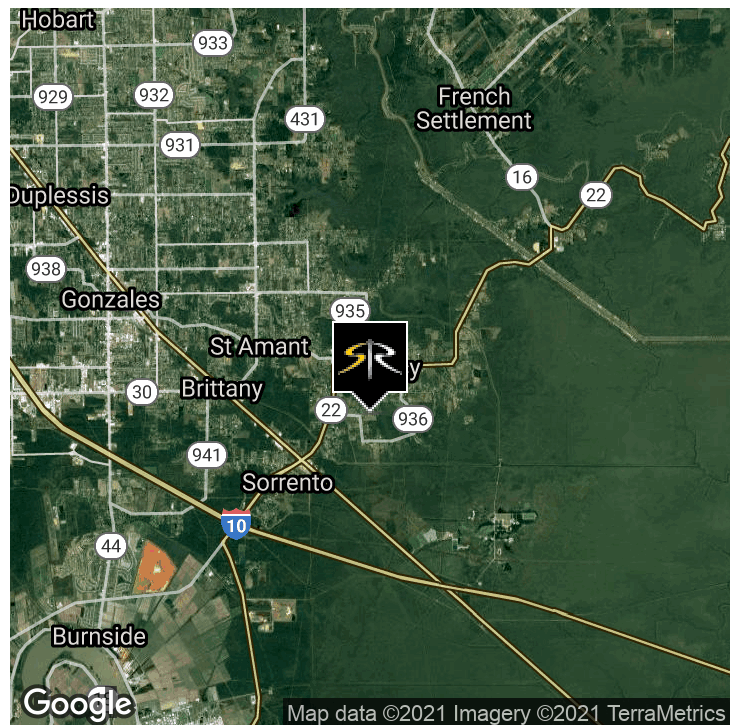


OFFERING SUMMARY

Sale Price:	\$375,705
Lot Size:	+/- 11.5 Acres
Price / Acre:	\$32,670

PROPERTY HIGHLIGHTS

- +/- 11.5 Acres Available on Swallow Bayou Rd in St. Amant, LA
- 1,088' Frontage on Swallow Bayou Rd.
- Zoned Rural
- Attractive Residential Area
- Totally Cleared



DON HANNA
 Commercial Sales & Leasing
 (D)225.802.5450
 don@sr-cre.com

BILL JEANSONNE, CCIM
 Commercial Investment Specialist
 (D)225.802.2932
 bill@sr-cre.com

SAURAGE ROTENBERG COMMERCIAL REAL ESTATE, LLC
 5135 Bluebonnet Boulevard
 Baton Rouge, LA 70809
 225.766.0000 | sauragerotenberg.com

VACANT LAND FOR SALE

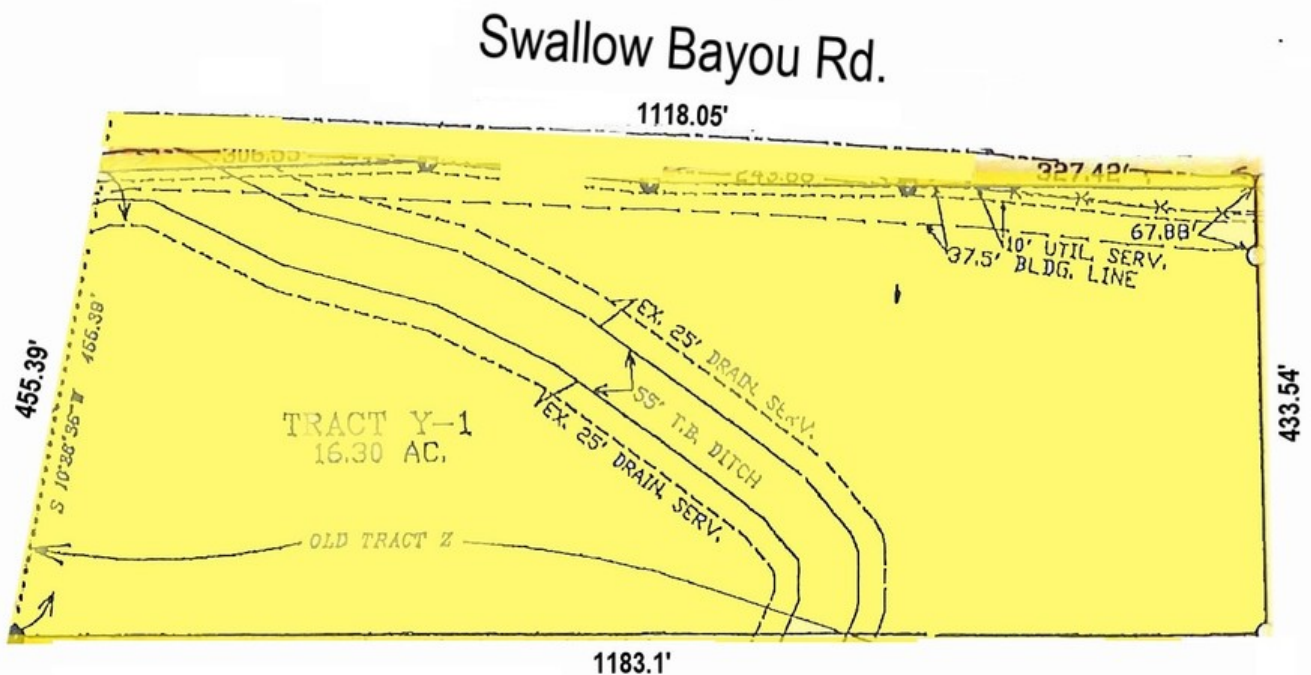


SAURAGE ROTENBERG
COMMERCIAL REAL ESTATE

SURVEY

SWALLOW BAYOU RD., SAINT AMANT, LA 70774

+/- 11.5 ACRES | \$375,705



DON HANNA
Commercial Sales & Leasing
(D)225.802.5450
don@sr-cre.com

BILL JEANSONNE, CCIM
Commercial Investment Specialist
(D)225.802.2932
bill@sr-cre.com

SAURAGE ROTENBERG COMMERCIAL REAL ESTATE, LLC
5135 Bluebonnet Boulevard
Baton Rouge, LA 70809
225.766.0000 | sauragerotenberg.com

VACANT LAND FOR SALE

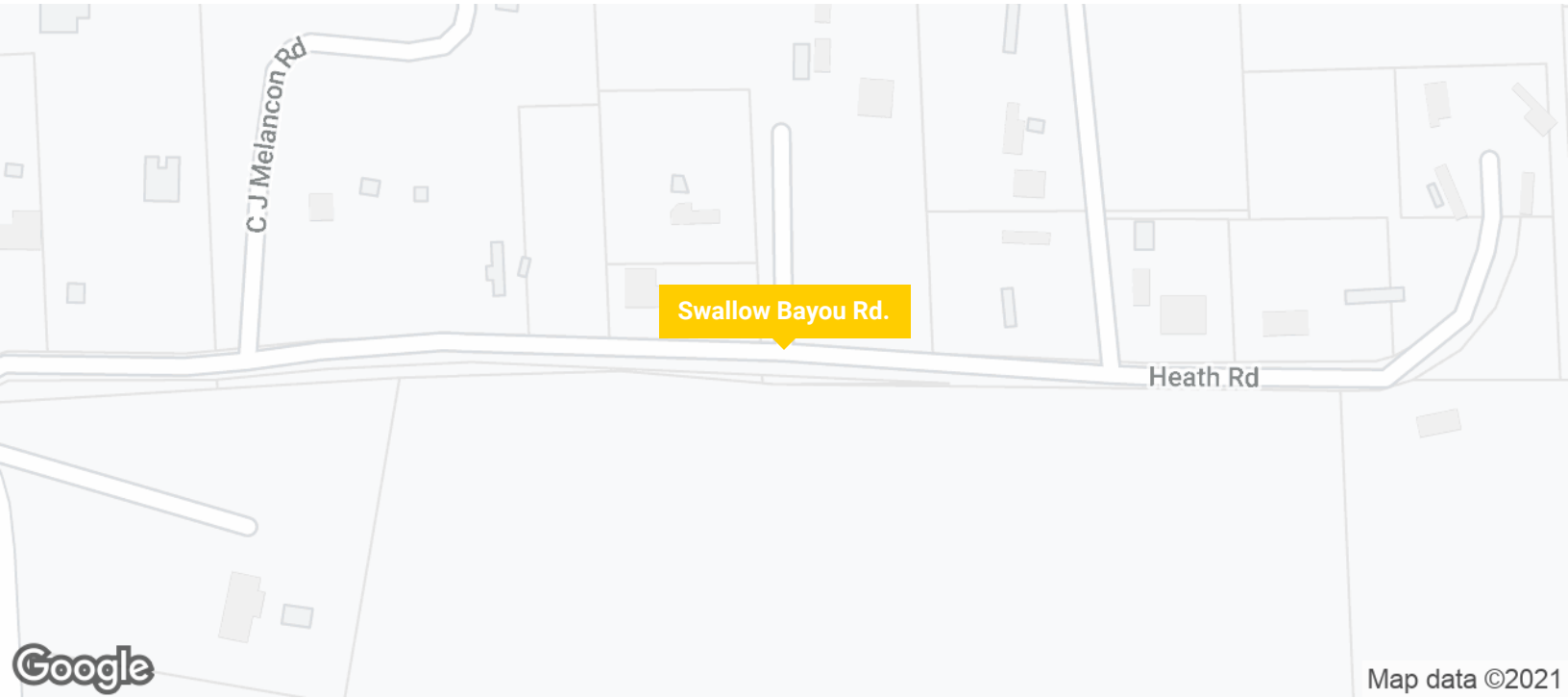
+/- 11.5 ACRES AVAILABLE IN ST. AMANT

SWALLOW BAYOU RD., SAINT AMANT, LA 70774

+/- 11.5 ACRES | \$375,705



SAURAGE ROTENBERG™
COMMERCIAL REAL ESTATE



DON HANNA
Commercial Sales & Leasing
(D)225.802.5450
don@sr-cre.com

BILL JEANSONNE, CCIM
Commercial Investment Specialist
(D)225.802.2932
bill@sr-cre.com

SAURAGE ROTENBERG COMMERCIAL REAL ESTATE, LLC
5135 Bluebonnet Boulevard
Baton Rouge, LA 70809
225.766.0000 | sauragerotenberg.com

The information contained herein has either been given to us by property owners or is from sources deemed reliable and is believed to be correct, it is not in any way warranted or guaranteed by Saurage Rotenberg Commercial Real Estate. This information is submitted subject to errors, omissions, changes in price, rental or other conditions, withdrawal without notice, and to any special listing conditions imposed by the principals. Licensed in Louisiana & Mississippi.px