

FOR LEASE

26111 ANTONIO PARKWAY • RANCHO SANTA MARGARTIA

3,400 Square Foot Office Space Available



For More Information, Contact:

MARK JERUE
Senior Vice President
BRE# 01073399
(949) 790-3121
mjerue@leeirvine.com

CRAIG FITTERER
Senior Vice President
BRE# 01246929
(949) 790-3123
cfitterer@leeirvine.com

BJ FELL
Vice President
BRE# 01929179
(949) 790-3144
bfell@leeirvine.com



COMMERCIAL REAL ESTATE SERVICES

Lee & Associates - Irvine, Inc. | 9838 Research Drive Irvine, California 92618 | www.lee-associates.com

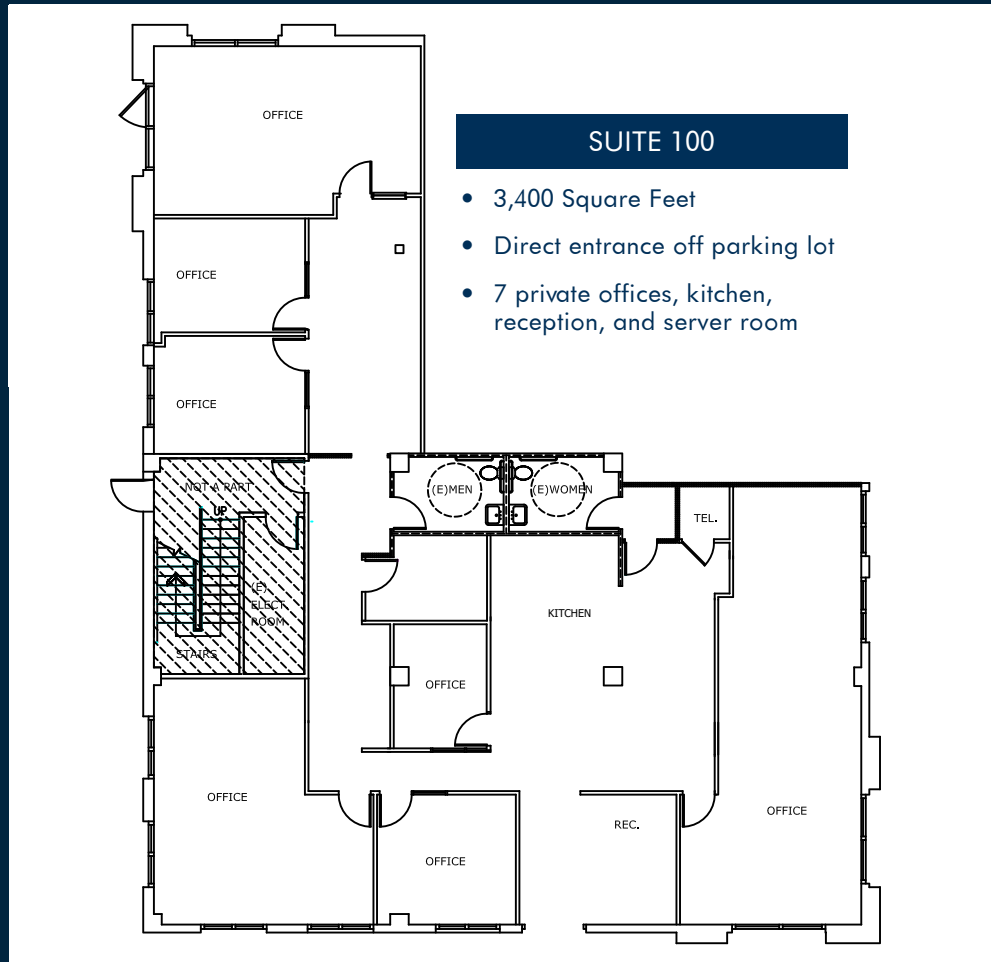
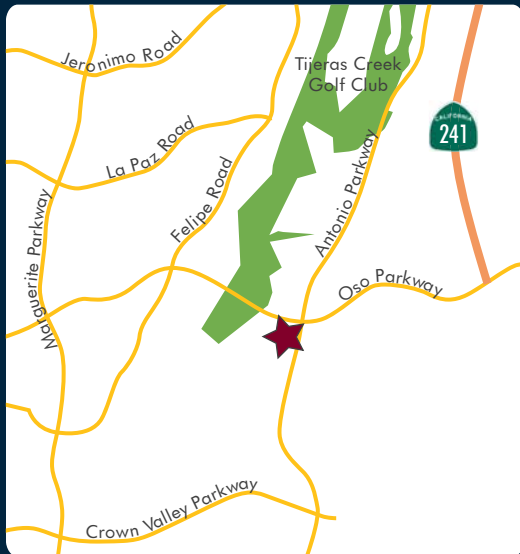
No warranty or representation is made to the accuracy of the foregoing information. Terms of sale or lease and availability are subject to change or withdrawal without notice.

FOR LEASE

26111 ANTONIO PARKWAY • RANCHO SANTA MARGARTIA

PROPERTY FEATURES:

- High image office suite
- 2-story, Class "A" office building
- Built in 1994
- 4:1 free surface parking
- Excellent access to the 241 Foothill Transportation Corridor



For More Information, Contact:

MARK JERUE
Senior Vice President
BRE# 01073399
(949) 790-3121
mjerue@leeirvine.com

CRAIG FITTERER
Senior Vice President
BRE# 01246929
(949) 790-3123
cfitterer@leeirvine.com

BJ FELL
Vice President
BRE# 01929179
(949) 790-3144
bfell@leeirvine.com



COMMERCIAL REAL ESTATE SERVICES

Lee & Associates - Irvine, Inc. | 9838 Research Drive Irvine, California 92618 | www.lee-associates.com

No warranty or representation is made to the accuracy of the foregoing information. Terms of sale or lease and availability are subject to change or withdrawal without notice.