

FOR LEASE > MIDTOWN > OFFICE/RETAIL

2123 Liddell Dr NE

Atlanta, GA 30324



MORE INFORMATION:

Michael Dinerman
Vice President

michael@pollockcommercial.com

(404) 310-4577

[linkedin.com](https://www.linkedin.com/in/michael-dinerman)



2123 Liddell Dr NE

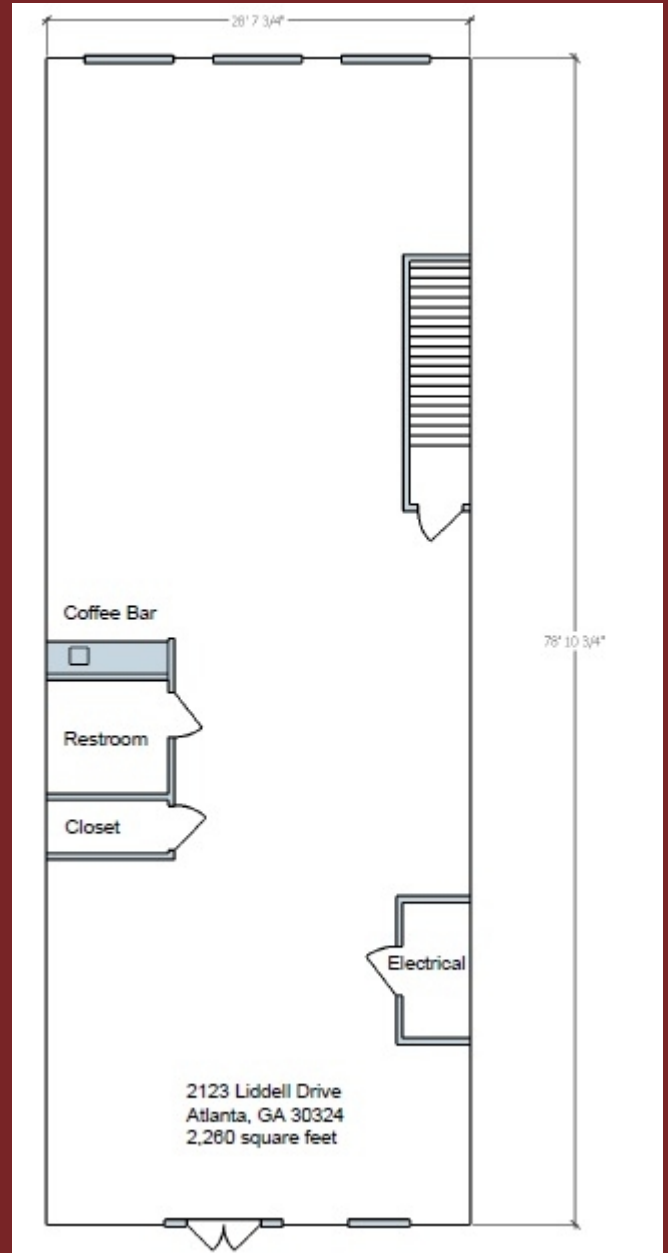
Atlanta, GA 30324



Property Features:

- 2,260 sf +/- available space
- Open floor plan
- New storefront double doors and window
- 6 parking spaces, (3 front/3 rear)
- Private rear entrance
- New ADA restroom
- Coffee bar with granite countertop
- 120/240/480 volt, three-phase electricity

FLOOR PLAN



FOR LEASE > MIDTOWN > OFFICE/RETAIL

2123 Liddell Dr NE

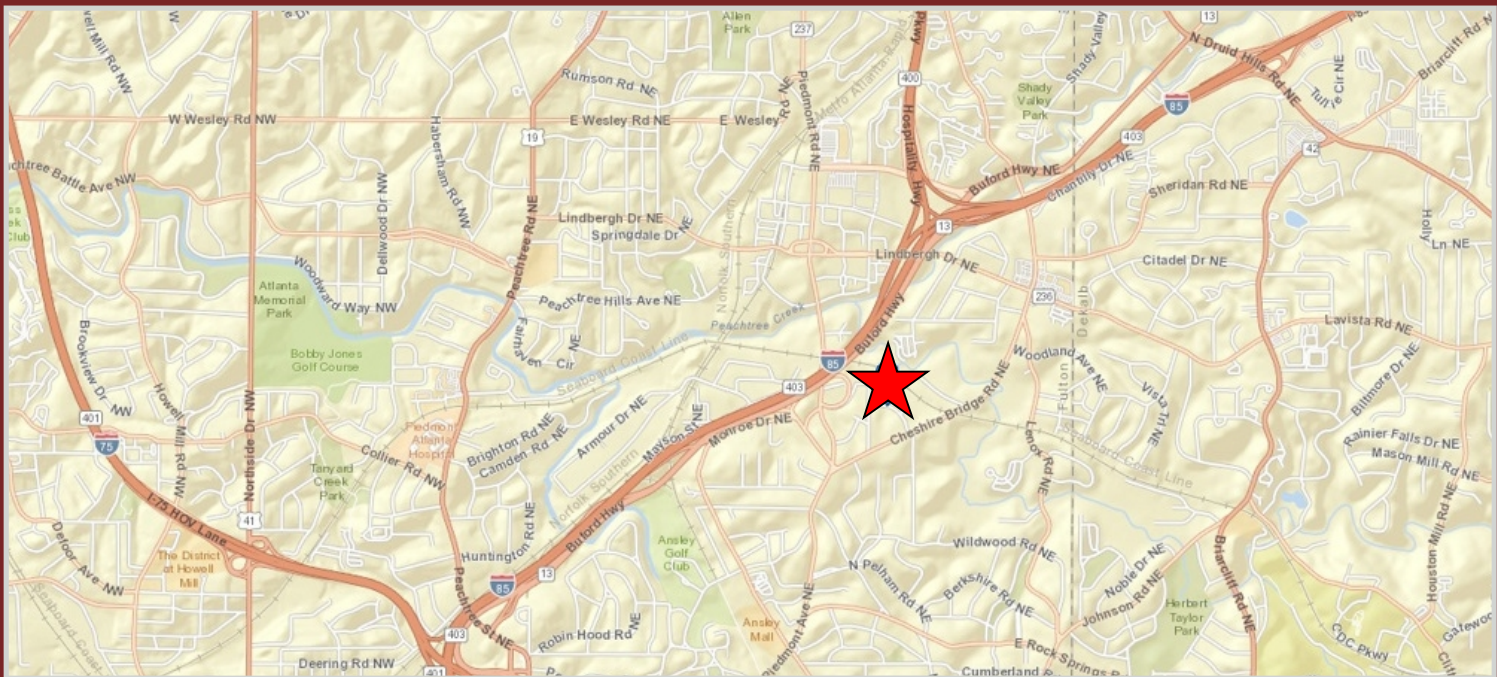
Atlanta, GA 30324



AERIAL



MAP



No warranty or representation, express or implied, is made as to the information contained herein, and same is submitted subject to errors, omissions, change of price, rental, or other conditions, withdrawal without notice, and to any special listing conditions, imposed by our principals.