



## Available For Lease

### Free-Standing Industrial Building



**16,158 SF**

Two (2) ground level doors

1,000 SF office

Fenced yard area (rear)

Completely refurbished in 2016

Sprinklered building

\$0.70/SF gross

Power can possibly be upgraded to 3  
Phase 400amps (call broker for details)

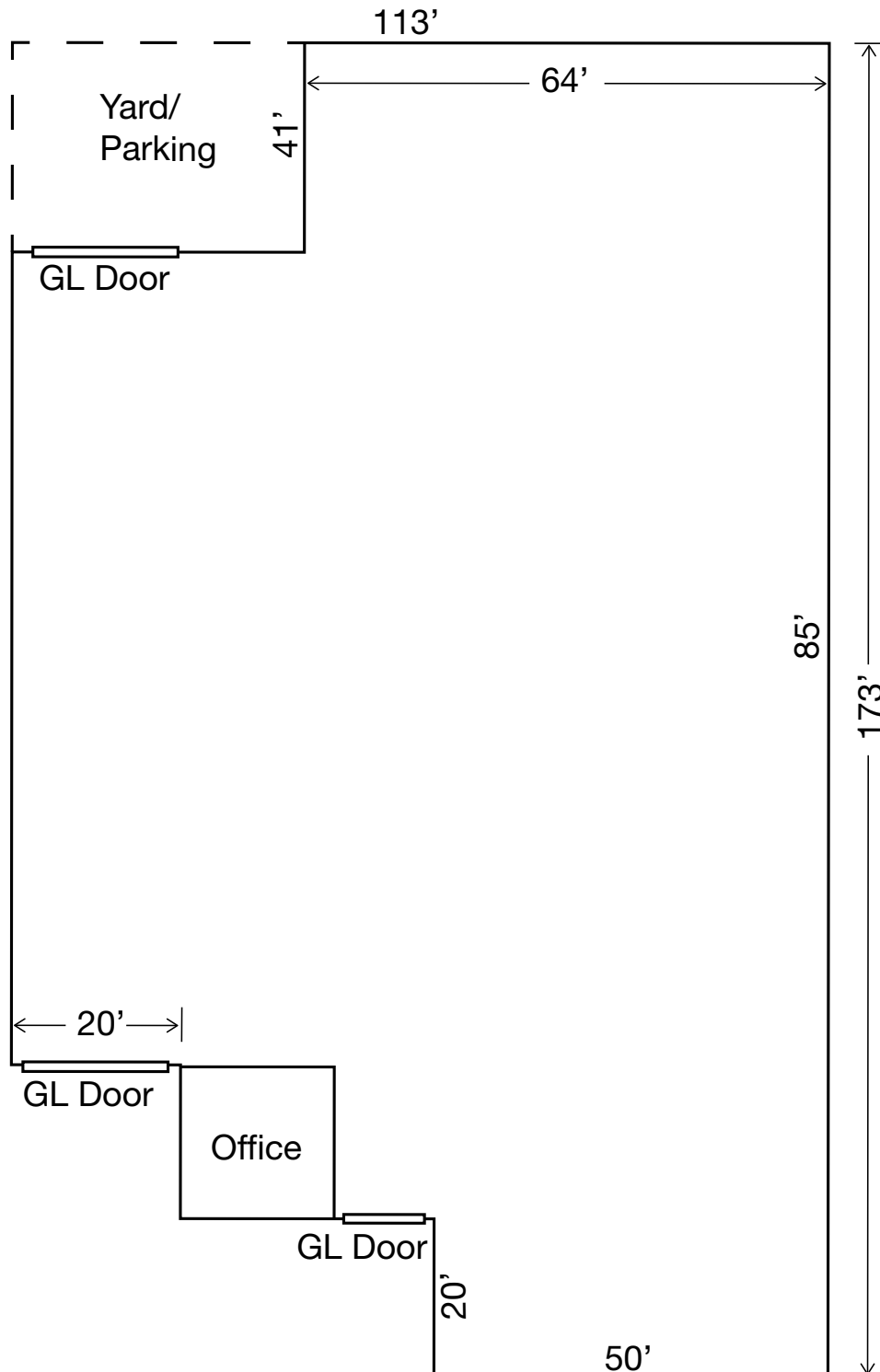
### Contact

**Jon R. Reno, SIOR, CCIM**  
323.837.4012  
jreno@kiddermathews.com  
LIC #01277642

**Trevor Gale**  
323.837.4020  
tgale@kiddermathews.com  
LIC #01452957

**John Bowman, SIOR**  
562.472.0235  
jb Bowman@kiddermathews.com  
LIC #00477934

**[kiddermathews.com](http://kiddermathews.com)**



## Contact

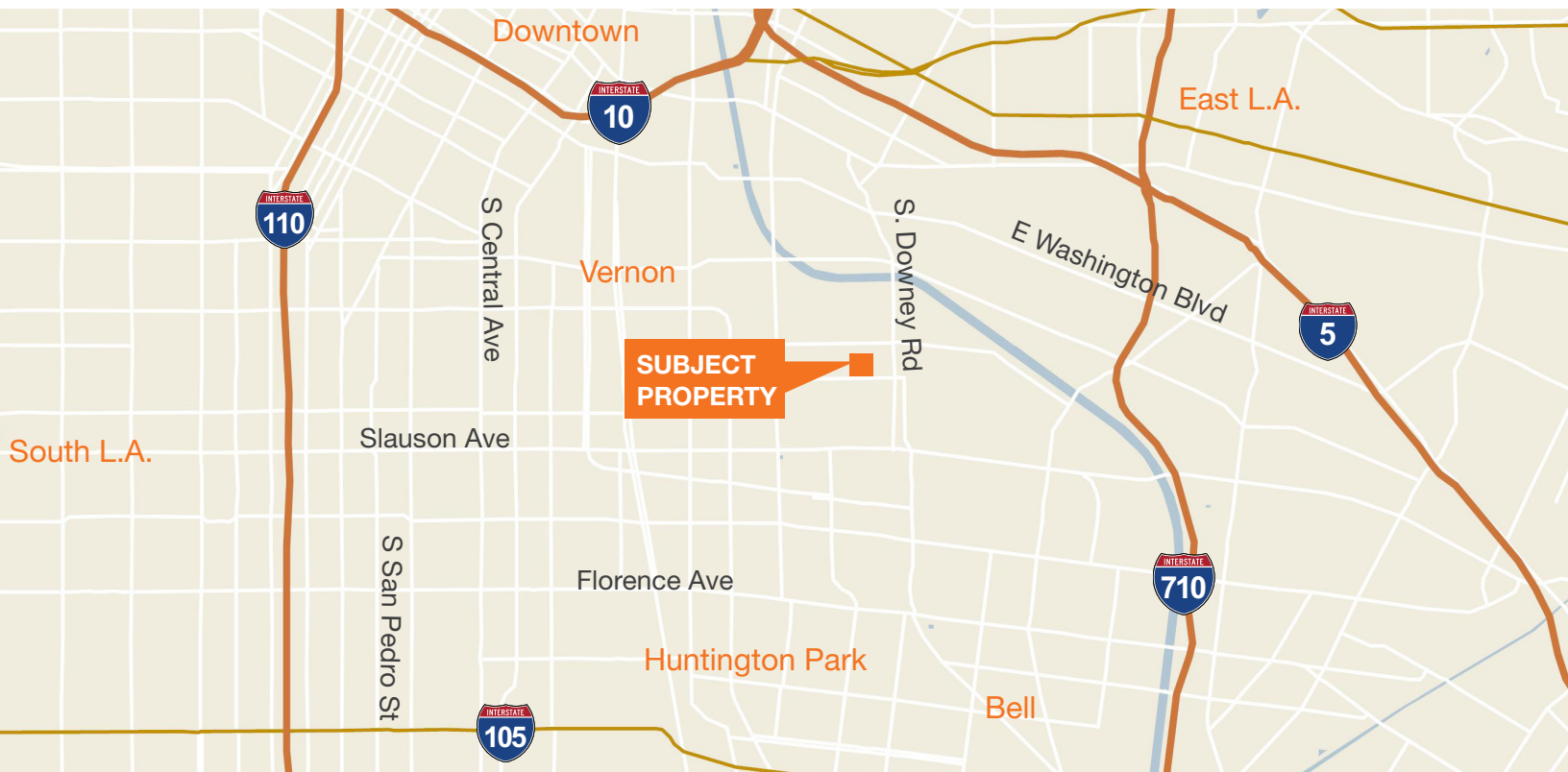
**Jon R. Reno, SIOR, CCIM**  
 323.837.4012  
 jreno@kiddermathews.com  
 LIC #01277642

**Trevor Gale**  
 323.837.4020  
 tgale@kiddermathews.com  
 LIC #01452957

**John Bowman, SIOR**  
 562.472.0235  
 jbowman@kiddermathews.com  
 LIC #00477934

[kiddermathews.com](http://kiddermathews.com)





## Contact

**Jon R. Reno, SIOR, CCIM**  
323.837.4012  
jreno@kiddermathews.com  
LIC #01277642

**Trevor Gale**  
323.837.4020  
tgale@kiddermathews.com  
LIC #01452957

**John Bowman, SIOR**  
562.472.0235  
jb Bowman@kiddermathews.com  
LIC #00477934

[kiddermathews.com](http://kiddermathews.com)