

AVAILABLE FOR LEASE
5924 W. INDUSTRIAL HIGHWAY
Gary, Indiana



PROPERTY SPECIFICATIONS:

- SITE SIZE:** 5 Acres
DIMENSIONS: 275' x 793'
ZONING: M 2-1, General Manufacturing
LEASE RATE: Subject to Offer
COMMENTS:
- No stoplights to I-80
 - Easy access to I-90, I-94/80 & I-65 via Cline Avenue
 - Adjacent to Gary Chicago Airport
 - Near multiple rail lines & carriers

LOCATION HIGHLIGHTS

- Less than 10 miles to IL / IN border
- 30 miles from Downtown Chicago



Tim McCahill
Principal
tmccahill@lee-associates.com
D 773.355.3044

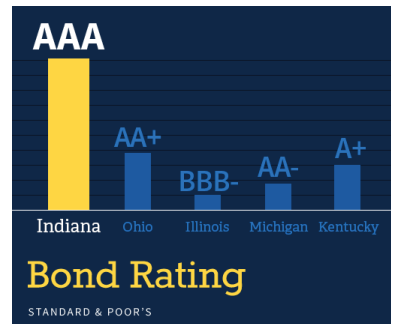
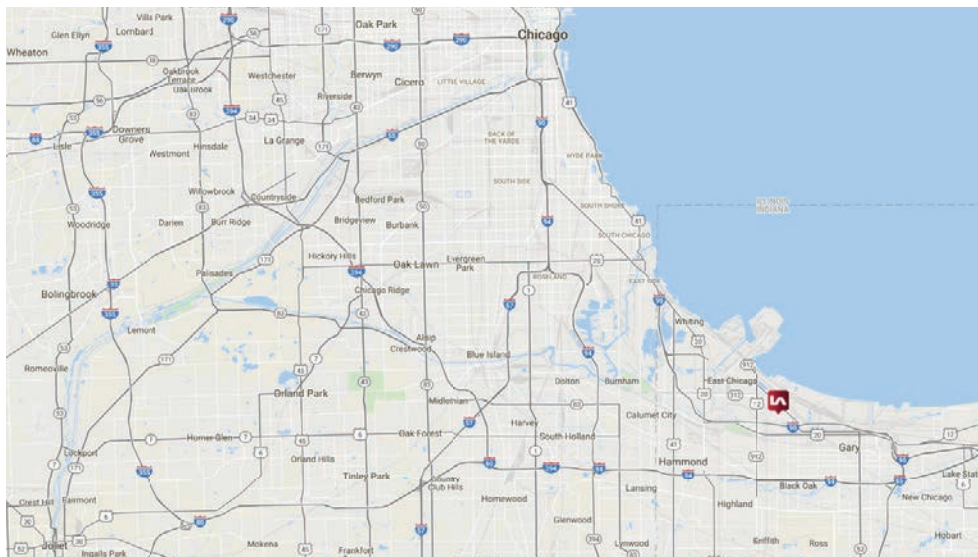
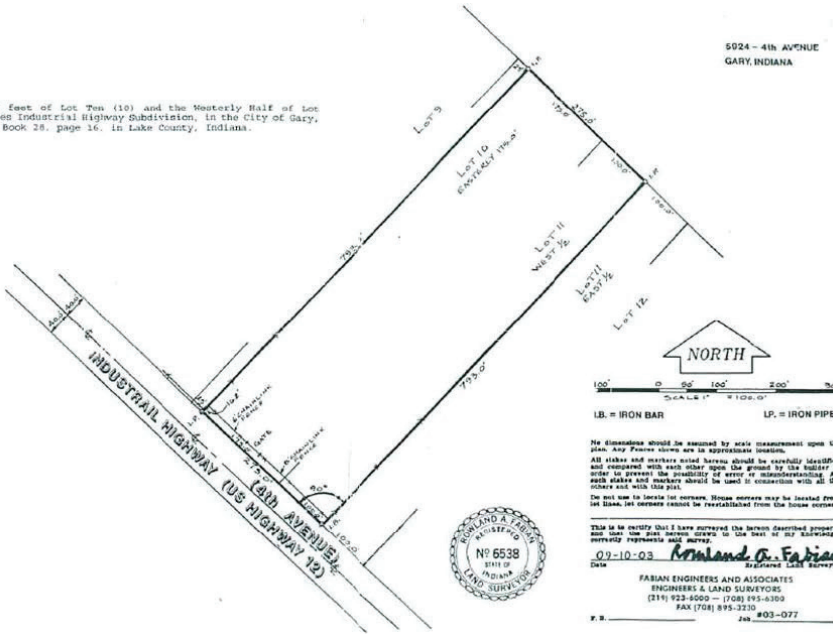
Joe Feeny
Senior Associate
jfeeny@lee-associates.com
D 773.355.3039

All information furnished regarding property for sale, rental or financing is from sources deemed reliable, but no warranty or representation is made to the accuracy thereof and same is submitted to errors, omissions, change of price, rental or other conditions prior to sale, lease or financing or withdrawal without notice. No liability of any kind is to be imposed on the broker herein.

AVAILABLE FOR LEASE
 5924 W. INDUSTRIAL HIGHWAY
 Gary, Indiana

SURVEY

The Easterly 175 Feet of Lot Ten (10) and the Westerly Half of Lot Eleven (11), Dorkes Industrial Highway Subdivision, in the City of Gary, as shown in Plat Book 28, page 16, in Lake County, Indiana.



Tim McCahill
 Principal
 tmccahill@lee-associates.com
 D 773.355.3044

Joe Feeney
 Senior Associate
 jfeeney@lee-associates.com
 D 773.355.3039

All information furnished regarding property for sale, rental or financing is from sources deemed reliable, but no warranty or representation is made to the accuracy thereof and same is submitted to errors, omissions, change of price, rental or other conditions prior to sale, lease or financing or withdrawal without notice. No liability of any kind is to be imposed on the broker herein.