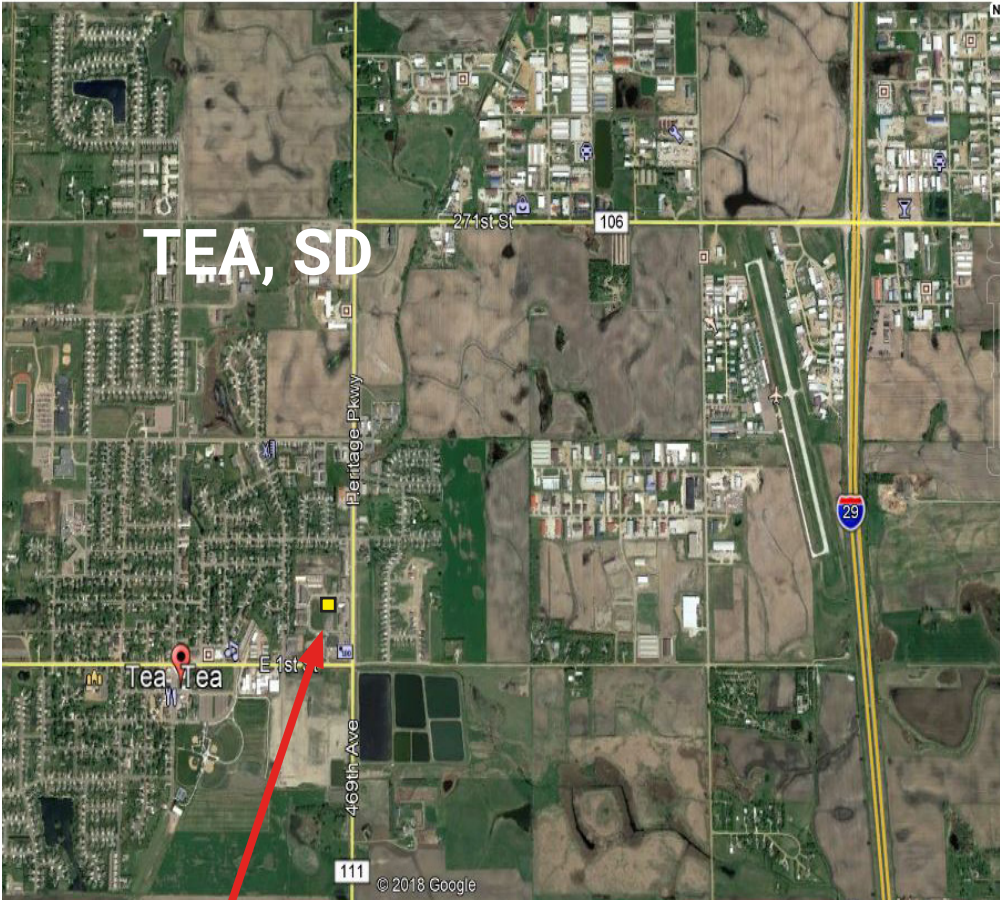


LAND FOR SALE: COMMERCIAL LAND - TEA, SD

715 Figzel Court
Tea SD 57064

PARCEL SIZE: 33,124 SF
PRICE: \$4.50 PSF
TERMS: Cash
ZONING: General Business
LEGAL: Please Contact Agent
2018 TAXES: \$2,076.12

**Only 1
parcel left!**



Subject Site

PROPERTY INFORMATION

- ONLY ONE PARCEL LEFT in this highly desirable area of Tea, one of the fastest growing cities in South Dakota.
- Located in the heart of a rapidly growing retail area.
- Businesses within walking distance of this property include Fitness First of Tea, Postal Service, Tea City Hall, Subway, Tea Veterinary Clinic, Lewis Pharmacy and Fareway Grocery are within walking distance.



**For more information,
please contact:**

Mike Van Buskirk

p: 605.361.8211

c: 605.366.0936

e: Mike@VBCLink.com

VanBuskirk
COMPANIES

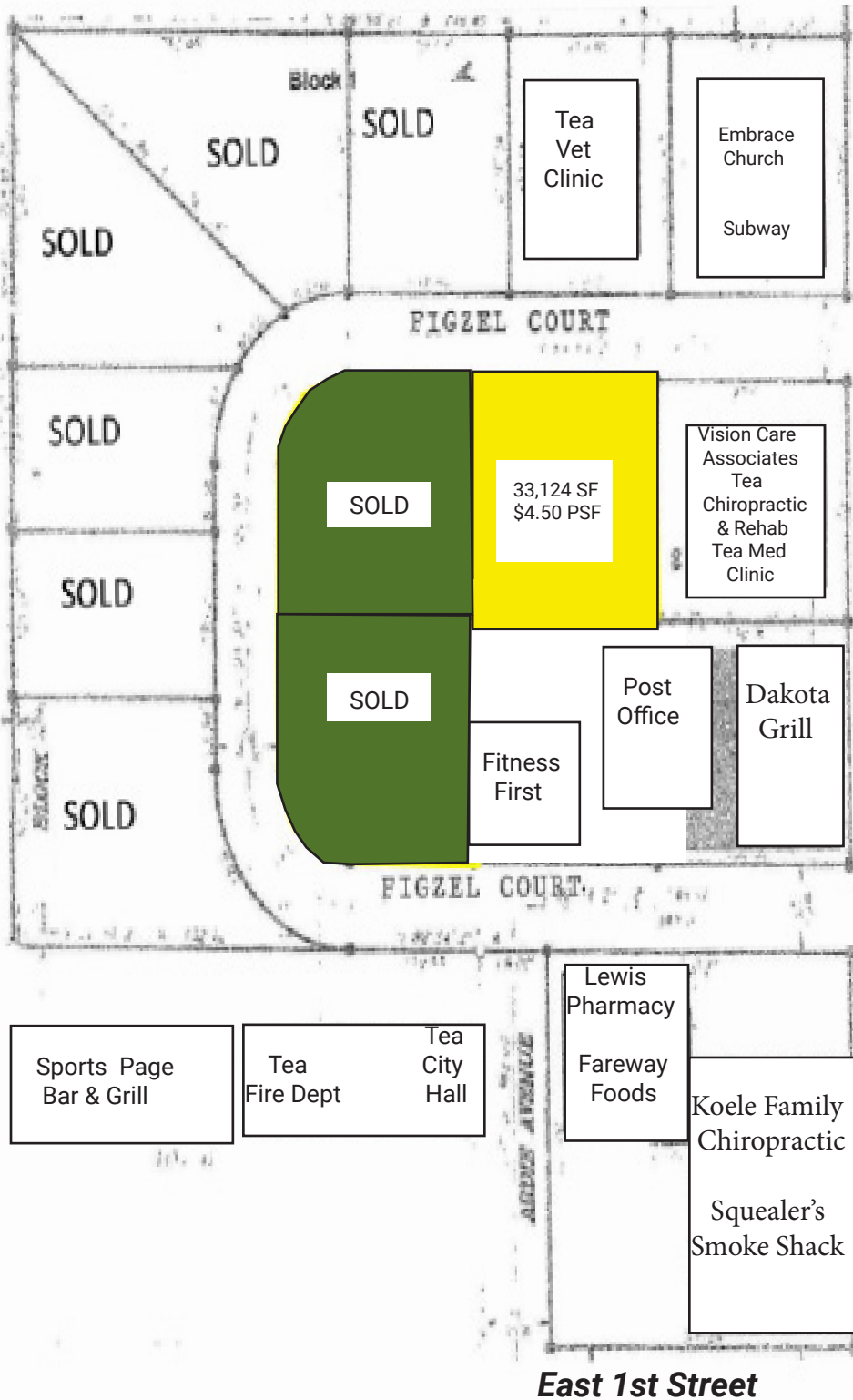
This information has been secured from sources we believe to be reliable, but we make no representation or warranties, expressed or implied, as to the accuracy of the information. All references to age, square footage, income, and expenses are approximate. Buyers or Lessors should conduct their own independent investigations and rely only on those results.

REAL ESTATE DEVELOPMENT | BROKERAGE | INVESTMENT
MANAGEMENT | COMMERCIAL CONSTRUCTION | ENGINEERING | ARCHITECTURE

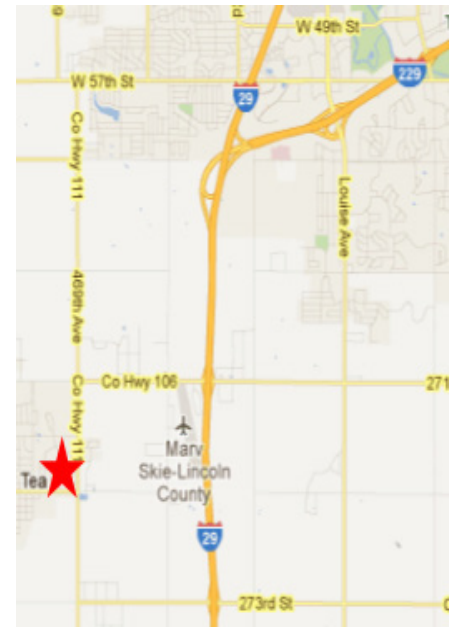
2571 S Westlake Dr, Ste 100, Sioux Falls, SD 57106 | o: 605.361.8211 | f: 605.361.8052 | w: VBCLink.com

LAND FOR SALE: COMMERCIAL LAND - TEA, SD

715 Figzel Court
Tea SD 57064



Heritage Parkway



**For more information,
please contact:**

Mike Van Buskirk

p: 605.361.8211

c: 605.366.0936

e: Mike@VBCLink.com

VanBuskirk
COMPANIES

This information has been secured from sources we believe to be reliable, but we make no representation or warranties, expressed or implied, as to the accuracy of the information. All references to age, square footage, income, and expenses are approximate. Buyers or Lessors should conduct their own independent investigations and rely only on those results.

REAL ESTATE DEVELOPMENT | BROKERAGE | INVESTMENT
MANAGEMENT | COMMERCIAL CONSTRUCTION | ENGINEERING | ARCHITECTURE

2571 S Westlake Dr, Ste 100, Sioux Falls, SD 57106 | o: 605.361.8211 | f: 605.361.8052 | w: VBCLink.com