

FOR LEASE

PROFESSIONAL OFFICES

WESTSIDE CENTER

33305 1st Way South, Suite B-212
Federal Way, WA 98003



BUILDING FEATURES

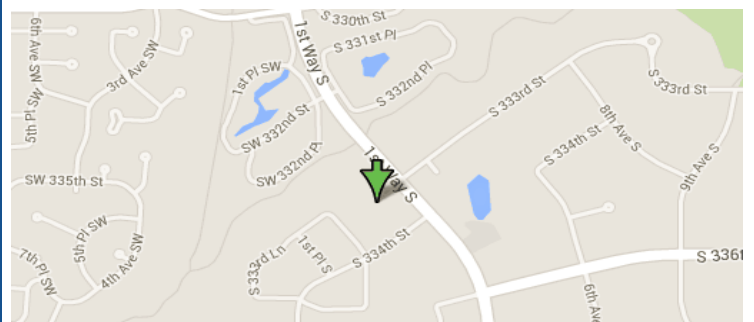
- Affordable Professional Office Space
- 8 to 12+ Private Offices
- # 3,294 Total SF
- \$3,810.00 Gross per month

Office Features

- Conference Room
- Kitchen
- Fully wired Internet Services
- Lots of Storage Space

Many Nearby Shopping Amenities

- Numerous Restaurants & Retail Outlets
- Abundant Free Parking
 - Flexible Lease Terms
 - Arterial Access to HWY 99, & I-5
 - Minutes from Downtown Federal Way



CCM Commercial

Commercial Real Estate Services

Cal C. Mitchell
(425) 922-2886 Cell

Cal@ccmcommercial.com

- (888) 417-1792 Office
- www.ccmcommercial.com



The information contained herein has been obtained from reliable sources but is not guaranteed. A prospective Buyer/ Tenant should verify each item relating to this property and all information contained herein.

FOR LEASE

PROFESSIONAL OFFICES

WESTSIDE CENTER

33305 1st Way South, Suite B-212
Federal Way, WA 98003



CCM Commercial
Commercial Real Estate Services

Cal C. Mitchell
(425) 922-2886 Cell
Cal@ccmcommercial.com

- (888) 417-1792 Office
- www.ccmcommercial.com



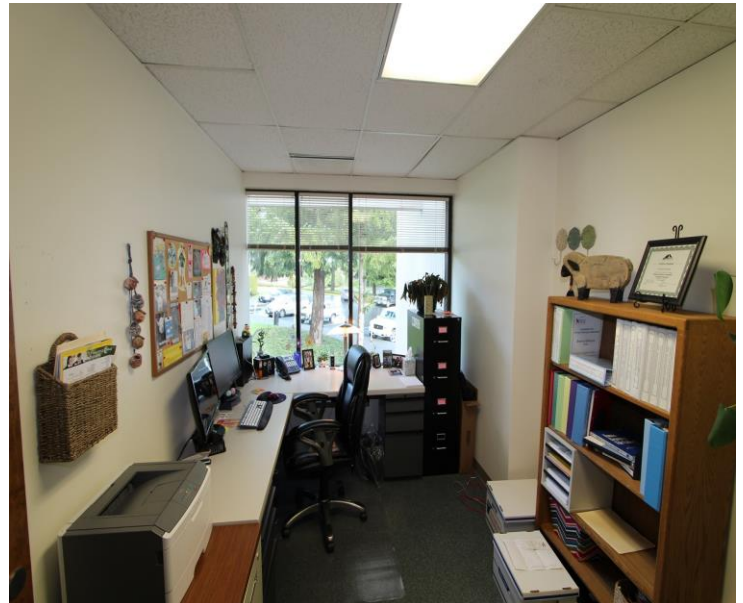
The information contained herein has been obtained from reliable sources but is not guaranteed. A prospective Buyer/ Tenant should verify each item relating to this property and all information contained herein.

FOR LEASE

PROFESSIONAL OFFICES

WESTSIDE CENTER

33305 1st Way South, Suite B-212
Federal Way, WA 98003



CCM Commercial
Commercial Real Estate Services

Cal C. Mitchell
(425) 922-2886 Cell

Cal@ccmcommercial.com

- (888) 417-1792 Office
- www.ccmcommercial.com



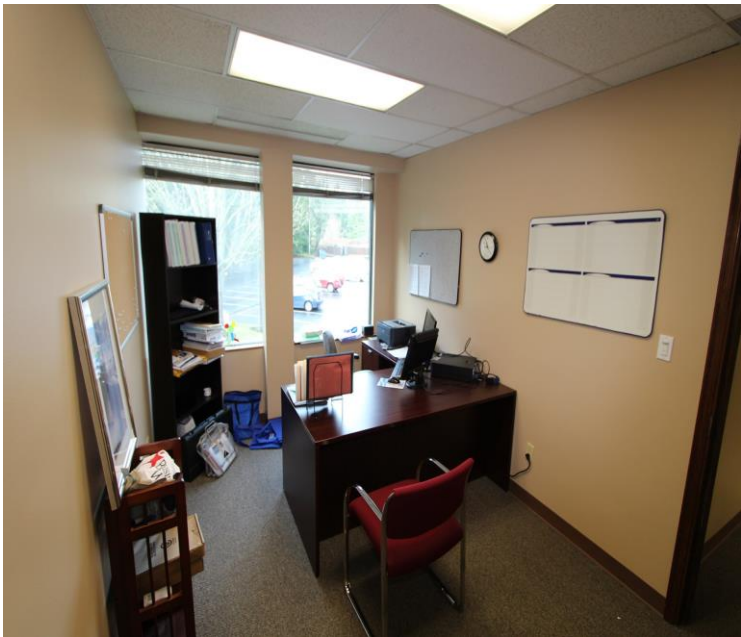
The information contained herein has been obtained from reliable sources but is not guaranteed. A prospective Buyer/ Tenant should verify each item relating to this property and all information contained herein.

FOR LEASE

PROFESSIONAL OFFICES

WESTSIDE CENTER

33305 1st Way South, Suite B-212
Federal Way, WA 98003



CCM Commercial
Commercial Real Estate Services

Cal C. Mitchell
(425) 922-2886 Cell
Cal@ccmcommercial.com

- (888) 417-1792 Office
- www.ccmcommercial.com



FOR LEASE

PROFESSIONAL OFFICES

WESTSIDE CENTER

33305 1st Way South, Suite B-212
Federal Way, WA 98003



CCM Commercial
Commercial Real Estate Services

Cal C. Mitchell

(425) 922-2886 Cell

Cal@ccmcommercial.com

• (888) 417-1792 Office

• www.ccmcommercial.com

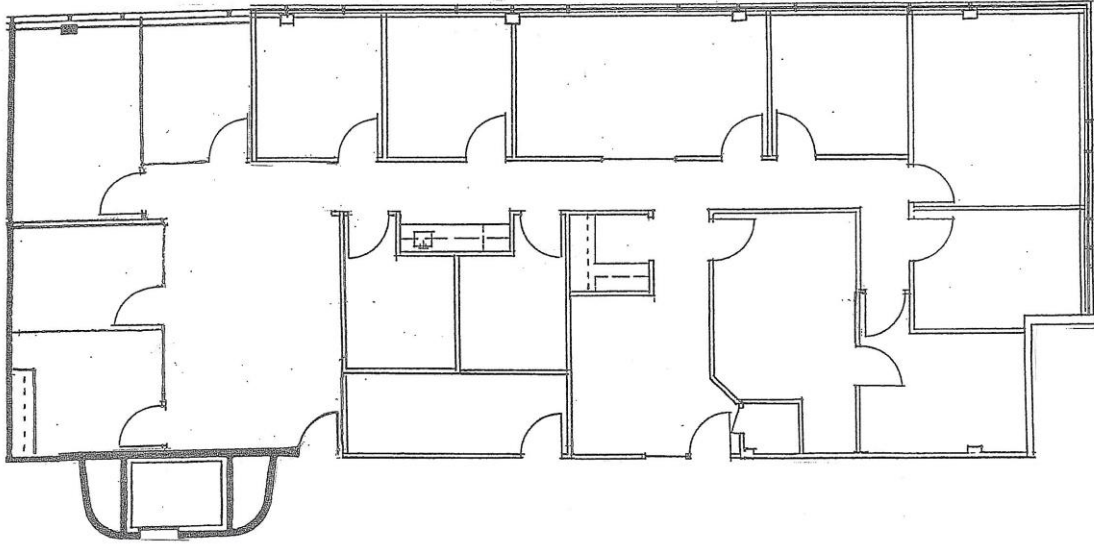


The information contained herein has been obtained from reliable sources but is not guaranteed. A prospective Buyer/ Tenant should verify each item relating to this property and all information contained herein.

FOR LEASE
PROFESSIONAL OFFICES

WESTSIDE CENTER

33305 1st Way South, Suite B-212
Federal Way, WA 98003



Westside Center
33305 – 1st Way South
Suite B-212
3,294 s.f.



CCM Commercial
Commercial Real Estate Services

Cal C. Mitchell

(425) 922-2886 Cell

Cal@ccmcommercial.com

• (888) 417-1792 Office

• www.ccmcommercial.com



The information contained herein has been obtained from reliable sources but is not guaranteed. A prospective Buyer/ Tenant should verify each item relating to this property and all information contained herein.